

RoseTM Rx 3 in 1

Ready to Use

TRUSTED SINCE 1926

BONIDE[®]

3 garden products in one

Multi-purpose fungicide, insecticide,
miticide-3 in 1 product

ACTIVE INGREDIENT:

Clarified Hydrophobic Extract of Neem Oil..... 0.9%

OTHER INGREDIENTS:..... 99.1%

TOTAL:..... 100.0%

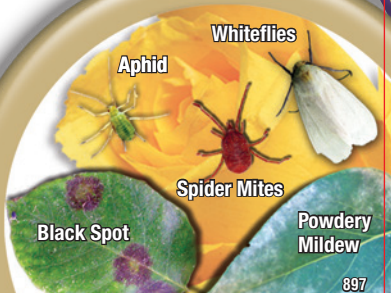
EPA Est No. 4-NY-1

EPA Reg. No. 70051-13-4

Keep Out Of Reach Of Children

CAUTION (See Back Panel for Additional
Precautionary Statements and First Aid)

Net Contents 32 FL. OZ. (946 ML.)



897



**FOR ORGANIC
GARDENING**

ROSE RX 3 IN 1 READY TO USE

FOR USE ON: ROSES, FLOWERS, HOUSEPLANTS, ORNAMENTAL TREES AND SHRUBS, FRUITS, NUTS, AND VEGETABLES IN AND AROUND THE HOME AND HOME GARDEN. CAN BE USED UP TO DAY OF HARVEST.

CONTROLS: BLACKSPOT, POWDERY MILDEW, RUST, SPIDER MITES, APHIDS, WHITEFLIES, AND OTHER INSECT PESTS.

FOR ORGANIC GARDENING

SELLER WARRANTS THAT THIS PRODUCT COMPLIES WITH THE SPECIFICATIONS EXPRESSED IN THIS LABEL. TO THE EXTENT CONSISTENT WITH APPLICABLE LAW, SELLER MAKES NO OTHER WARRANTIES, AND DISCLAIMS ALL OTHER WARRANTIES, EXPRESS OR IMPLIED, INCLUDING BUT NOT LIMITED TO WARRANTIES OF MERCHANTABILITY AND FITNESS FOR THE INTENDED PURPOSE. TO THE EXTENT CONSISTENT WITH APPLICABLE LAW, SELLER'S LIABILITY OR DEFAULT, BREACH OR FAILURE UNDER THIS LABEL SHALL BE LIMITED TO THE AMOUNT OF THE PURCHASE PRICE. TO THE EXTENT CONSISTENT WITH APPLICABLE LAW, SELLER SHALL HAVE NO LIABILITY FOR CONSEQUENTIAL DAMAGES.

EPA Reg. No. 70051-13-4

EPA Est. No. 4-NY-1

©Bonide Products, Inc. All Rights Reserved

Distributed by:
Bonide Products, Inc.
6301 Sutliff Road
Oriskany, NY 13424



68710612 Quart



DIRECTIONS FOR USE

IT IS A VIOLATION OF FEDERAL LAW TO USE THIS PRODUCT IN A MANNER INCONSISTENT WITH ITS LABELING.

GENERAL INFORMATION

- Three garden products in one.
- Multi-purpose fungicide/insecticide/miticide-3 in 1 product.
- Kills eggs, larvae and adult stages of insects.
- Prevents fungal attack of plant tissues.
- Not for use in food-handling areas.
- Shake well before using.
- Thorough plant coverage is essential to obtain optimal levels of control.
- Do not apply to wilted or otherwise stressed plants, or to newly transplanted material prior to root establishment.
- As with other pest control products, exercise care in timing applications to early morning/late evening to minimize the potential for leaf burn.
- Use with care on plants with tender tissue. Check for leaf burn in small-scale trials prior to use.

FUNGICIDE USE

Application Instructions

- This product is an effective fungicide for the prevention and control of various fungal diseases including black spot on roses, powdery mildew, downy mildew, anthracnose, rust leaf spot, botrytis, needle rust, scab, and flower, twig and tip blight.
- This product may be used on all roses, flowers, houseplants, ornamental trees and shrubs, fruits, nuts, and vegetables grown in and around the home and home garden.
- As a preventative, apply this product on a 7 to 14 day schedule until the potential for disease development is no longer present. Spray to run off. Complete coverage of all plant tissue is necessary for control.
- To control diseases already present, apply this product on a 7- day schedule until disease pressure is eliminated. Then continue spraying on 14-day schedule to prevent the disease from recurring. Spray to run off. Complete coverage of all plant tissue is necessary for control.

FUNGICIDE USE Cont.

- To prevent rust leaf spot diseases, anthracnose, and scab, begin applications at the first sign of spring budding.
- To prevent powdery mildew, apply in mid-summer or when disease is first detected. Continue applications until disease pressure no longer exists.
- To prevent black spot on roses, begin applications at first bud emergence in spring. Apply this product on a 14-day preventative schedule through the spring and fall to prevent disease emergence.

INSECTICIDE USE

Application Instructions

- This product is an effective insecticide for the control of various insect pests including whiteflies, mealy bugs, armyworms, hornworms, leafhoppers, bagworms, leafminers, psyllids, fruit flies, loopers, budworms, beetles (including Japanese beetles), aphids, scales, caterpillars, midges, budworms, and mites (including spider mites).
- This product may be used on all roses, flowers, houseplants, ornamental trees and shrubs, fruits, nuts, and vegetables grown in and around the home and home garden.
- Apply this product at first sign of insects/mites. This product is most effective in controlling insects/mites when applied on a 7-14 day schedule. For heavy insect populations, apply on a 7-day schedule. Spray to run off. Complete coverage of all plant tissue is necessary for control.

STORAGE & DISPOSAL

Pesticide Storage: Keep in original container. Store away from direct sunlight, feed, or foodstuffs. Keep container tightly sealed when not in use. Keep from freezing.

Pesticide and Container Handling

If empty: Nonrefillable container. Do not reuse or refill this container. Place in trash or offer for recycling if available.

If partly filled: Call your local solid waste agency for disposal instructions. Never place unused product down any indoor or outdoor drain.

FIRST AID

If inhaled:	<ul style="list-style-type: none">• Move person to fresh air.• If person is not breathing, call 911 or an ambulance, then give artificial respiration, preferably by mouth-to-mouth, if possible.• Call a poison control center or doctor for further treatment advice.
If in eyes:	<ul style="list-style-type: none">• Hold eye open and rinse slowly and gently with water for 15-20 minutes.• Remove contact lenses, if present, after the first 5 minutes, then continue rinsing eye.• Call a poison control center or doctor for treatment advice.
If on skin or clothing:	<ul style="list-style-type: none">• Take off contaminated clothing.• Rinse skin immediately with plenty of water for 15-20 minutes.• Call a poison control center or doctor for treatment advice.

Have the product container or label with you when calling a poison control center or doctor, or going for treatment. You may also contact the National Pesticide Information Center at 1-800-858-7378 for emergency medical treatment information.

PRECAUTIONARY STATEMENTS

HAZARDS TO HUMANS AND DOMESTIC ANIMALS

CAUTION: Harmful if inhaled. Avoid breathing spray mist. Causes moderate eye irritation. Harmful if absorbed through skin. Avoid contact with skin, eyes, or clothing. Wash thoroughly with soap and water after handling and before eating, drinking, chewing gum, or using tobacco. Remove and wash contaminated clothing before reuse. Prolonged or frequently repeated skin contact may cause allergic reactions in some individuals.

ENVIRONMENTAL HAZARDS

To protect the environment, do not allow pesticide to enter or run off into storm drains, drainage ditches, gutters or surface waters. Applying this product in calm weather when rain is not predicted for the next 24 hours will help to ensure that wind or rain does not blow or wash pesticide off the treatment area.

BEE HAZARD

This product is toxic to bees exposed to direct treatment. Do not apply this product while bees are actively visiting the treatment area.