

STEP 1

Start by taking inventory of the individual components you received. This shelving unit arrives in three separate boxes. See the component list to verify what you received. **If you are missing any items please contact SafeRacks support at 877-655-3443.**

STEP 2

Take two vertical posts and place them against a wall or on the floor with the key holes facing down as shown in Fig 1. Begin adding the 2-foot horizontal beams at the desired shelf levels. Complete this step twice so that you have two matching sections of the shelving unit. See Fig 2.

FIG 1



FIG 2

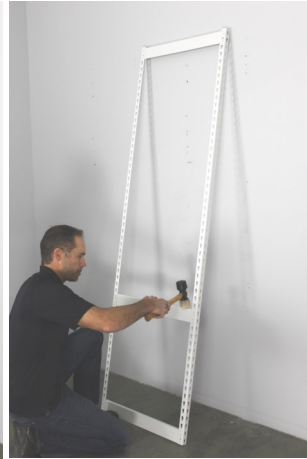


FIG 3



STEP 3

Locate the 8-foot beams and begin placing them at the same shelf levels you determined in step 2. See Fig 4. Add the remaining 8-foot beams at all levels. See Fig 5. **CAUTION: Ensure all rivets are seated firmly into each keyhole. Failure to do this may cause the shelves to become dislodged.**

FIG 4



FIG 5



STEP 4

Using 2 screws and 2 wingnuts at each end, mount the 4 center supports between the 8-foot horizontal beams. See Fig 6, 7 and 8. Tighten each screw with a screwdriver.

FIG 6



FIG 7



FIG 8



STEP 5

Place the wire decking on the shelf. Ensure that the side with more front-to-back wires is facing up. See Fig 11. Repeat this step until all remaining wire decks are in place.

FIG 9

FIG 10



For assistance contact the SafeRacks customer support team at 877-655-3443 or visit www.SafeRacks.com for more information. Our support staff is available Monday through Friday 7:00am to 5:30pm and Saturday 8:00am to 12:00pm Pacific Standard Time.

STEP 5 Continued

The wire decking should fit snug within the confines of the vertical posts. See Fig 11.

STEP 6

Locate the wire deck brackets, wing nuts and screws. At the center of each shelf, where the two wire decks meet, place a bracket over both ends of the wire decks and fasten in place. See Fig 12 through 17 for reference. Use a screwdriver to tighten.

FIG 11



FIG 12

FIG 13

FIG 14



FIG 15

FIG 16

FIG 17



SafeRacks shelving is designed, patented and packaged right here in the United States. We offer assembly and installation services in and around most major US cities. **DO NOT EXCEED THE MAXIMUM WEIGHT CAPACITY OF 300 POUNDS PER SHELF.** Load the shelving unit evenly. Do not stack items that are not adequately supported. Place heavy objects nearest the vertical posts and light objects nearest the center.

www.SafeRacks.com

1-877-655-3443 for Customer Support

25471 Arctic Ocean Drive, Lake Forest, CA 92630

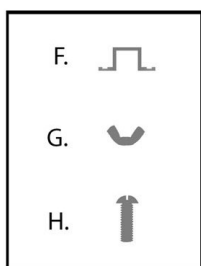
Copyright © Eagle Industrial Group Inc. 2015-2016

U.S. Patents D553,401 / 7,357,262 / D697,785 / 7,152,535 / Other Patents Pending



Component List:

- | | |
|---|---|
| A. 7' Vertical Posts - x 4 | E. 8' L-Channel Double Rivet Beams - x 8 |
| B. 2' L-Channel Double Rivet Beams x 8 | F. Wire Decking Brackets - x 8 |
| C. 2' x 4' Wire Decking Units - x 8 | G. Wing Nuts - x 32 |
| D. 2' Center Supports - x 4 | H. Machine Screws - x 32 |



www.SafeRacks.com

1-877-655-3443 for Customer Support

25471 Arctic Ocean Drive, Lake Forest, CA 92630

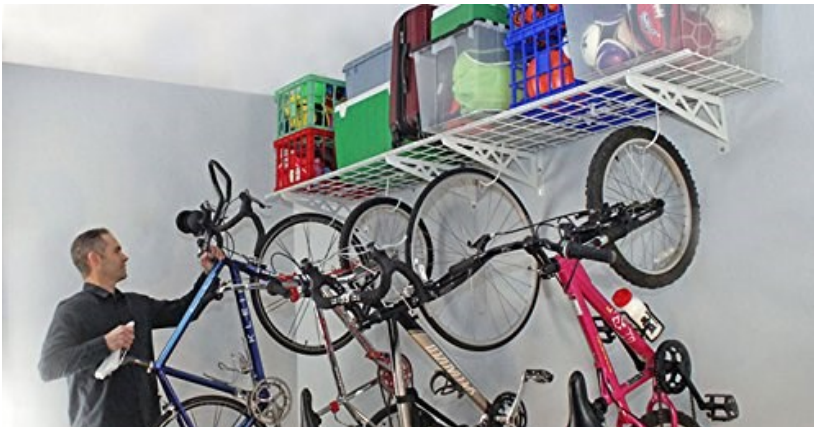
Overhead Garage Storage Racks



Pictured above is our best selling two-rack pack. It includes two 4x8 racks and hooks to hang your bikes.

Currently \$349.99 delivered

Wall Mounted Shelving



Pictured above is our Two-Pack 18"x48" ...That's 8 feet of shelving! **Currently \$79.99 Delivered**

Need Installation Service?

If you need assistance installing your SafeRacks products, we offer installation services in most major markets around the county. Our network of independent installers are certified and insured. Schedule your installation by calling 1-877-655-3443.