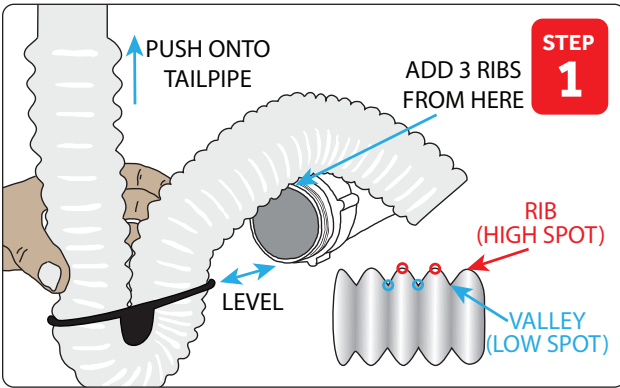


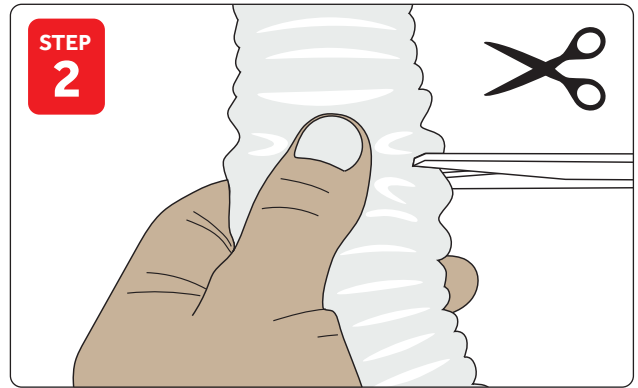
# Step-by-Step Instructions\*

SimpleDrain.com

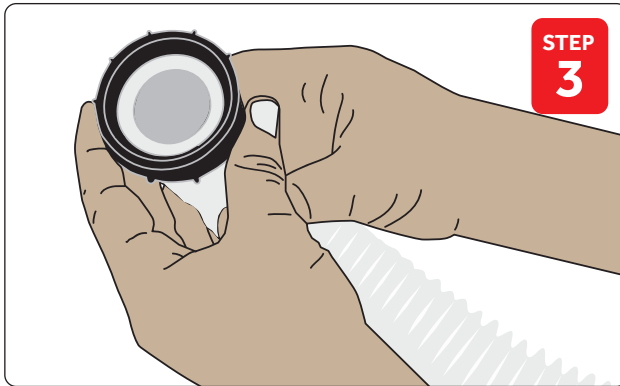
\*1.5" waste fitting shown below. See website for 1.25" waste fitting. Requires additional 1.5" to 1.75" size hose clamp (SAE 28 or similar).



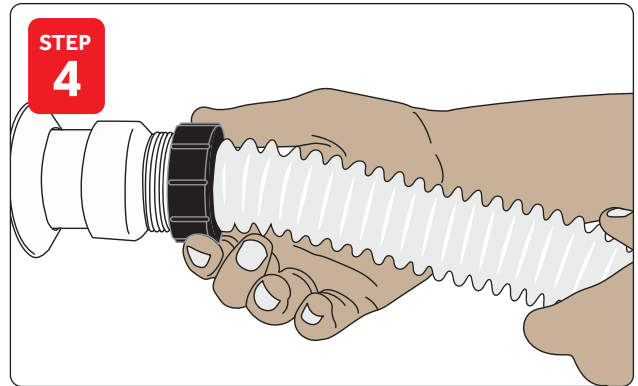
**STEP 1: ROUGH FIT AND MEASURE**



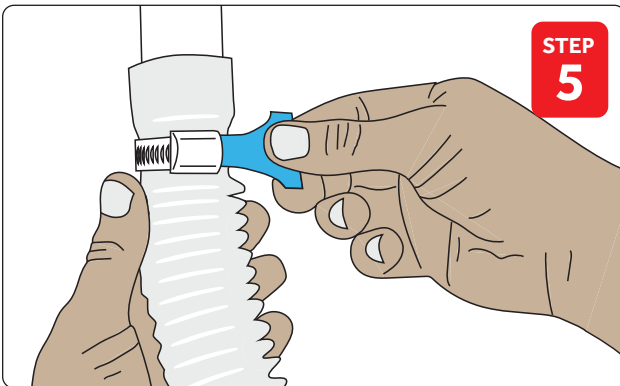
**STEP 2: CUT TO LENGTH IN VALLEY**



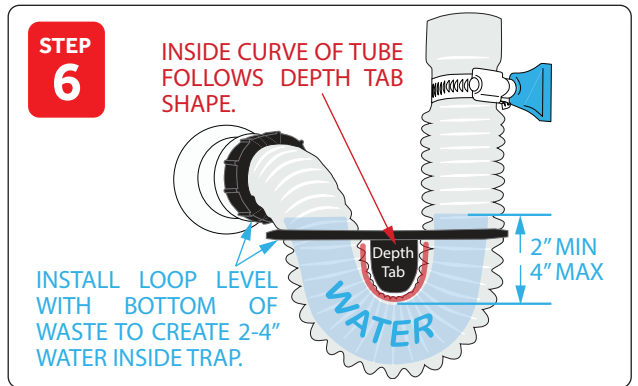
**STEP 3: PUSH RIB INTO FITTING**



**STEP 4: THREAD TO WASTE**



**STEP 5: CLAMP TO TAILPIPE**



**STEP 6: ATTACH TRAP LOOP**

**FOR HOW-TO VIDEOS  
AND MORE, VISIT:**

**SIMPLEDRAIN.COM**  
**1.25" WASTE PIPES**  
**P-TRAP**  
**S-TRAP**  
**OFFSET TRAP**



Attach trap loop into the valley on each side of the tube making sure it is near level with bottom of waste line. Use depth guide tab as shown above, ensuring that the distance from the bottom of waste to inside curve of tube is 2-4" and that there is a 1/8" to 1/4" per foot slope toward waste. Check for leaks and tighten connections as needed.