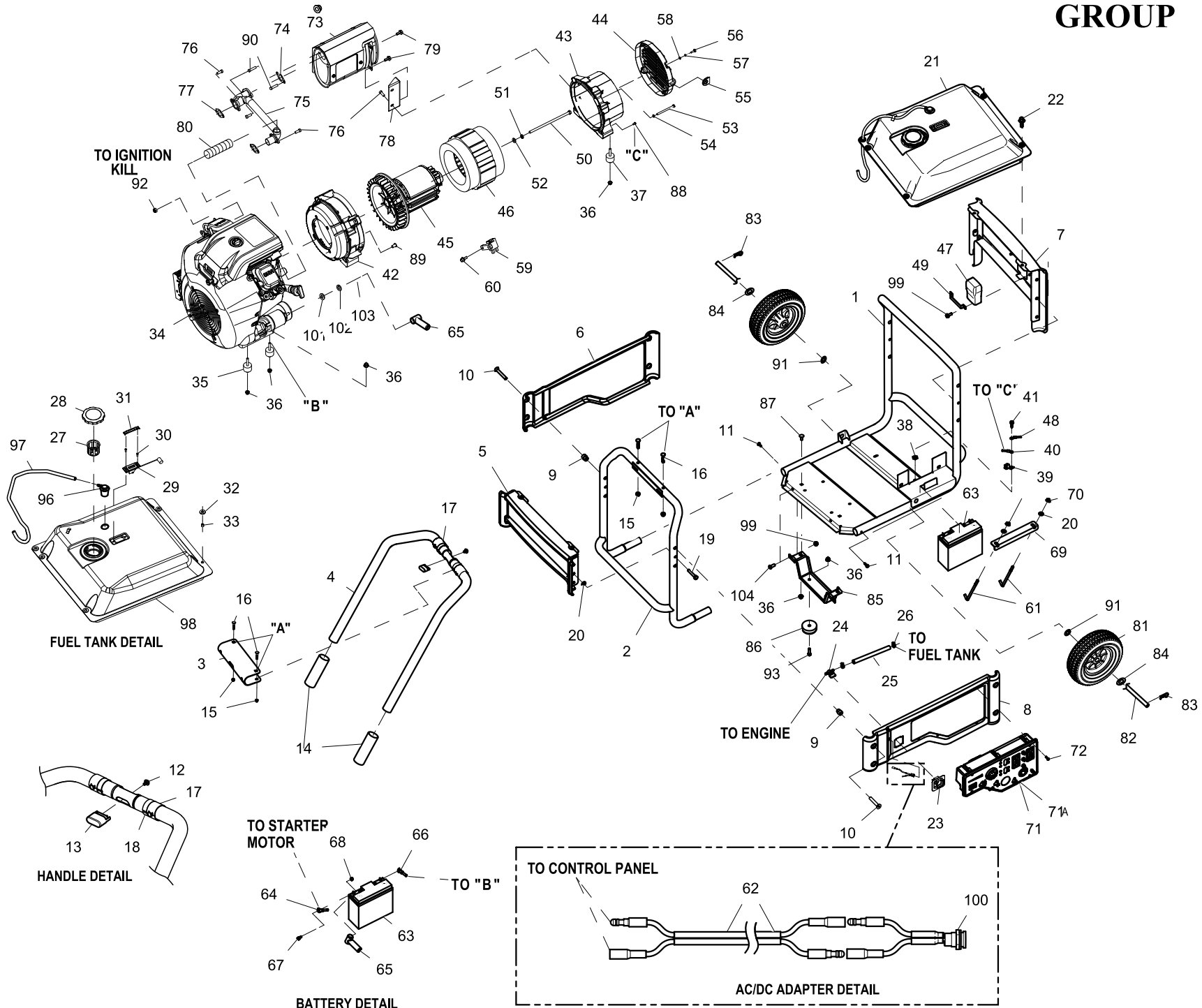


GROUP



GROUP EV

| ITEM | PART | QTY. | DESCRIPTION | ITEM | PART | QTY. | DESCRIPTION |
|------|------------|------|--------------------------------|------|---------|------|--|
| 1 | 0J4897 | 1 | CRADLE WLDMNT ALT END 530 XG | 53 | 087712 | 4 | SCREW HHC M8-1.25 X 110 C8.8 |
| 2 | 0H3673 | 1 | CRADLE WELDMENT,ENGINE END | 54 | 022129 | 4 | WASHER LOCK M8-5/16 |
| 3 | 0H9529B | 1 | BRACKET MOUNTING HANDLE | 55 | 0G5206 | 1 | GROMMET WIRE SLEEVE |
| 4 | 0J1208 | 1 | ASSY HANDLE XG | 56 | 020911 | 4 | SCREW PPHM M5-0.8 X 30 ZINC |
| 5 | 0H3478 | 1 | END PNL WELMNT,ENG SIDE 530 XG | 57 | 022152 | 4 | WASHER LOCK #10 |
| 6 | 0H3495A | 1 | PANEL, MUFFLER SIDE 530CC XG | 58 | 023897 | 4 | WASHER FLAT #10 ZINC |
| 7 | 0H9475 | 1 | END PNL WLDMNT,ALT SIDE 530 XG | 59 | 066386 | 1 | ASSEMBLY, BRUSH HOLDER |
| 8 | 0H3495B | 1 | PANEL, CPNL SIDE 530CC XG | 60 | 066849 | 2 | SCREW HHTT M5-0.8 X 16 |
| 9 | 0H5307 | 8 | HEAT SHIELD, XG6.5-8 | 61 | 0D3545A | 2 | J-BOLT M8-1.25 X 200 |
| 10 | 0H6059 | 8 | SCREW FHSC M8-1.25 X 60 BZC | 62 | 0H5857 | 1 | HARNES,12VDC POWER JACK,XG1 |
| 11 | 0L2176 | 2 | SCREW HHSD PREMIUM 1/4-14X1 BZ | 63 | 0H1663 | 1 | BATTERY 12V18AH SEALED |
| 12 | 0F2659 | 1 | SCREW HHTT M3-0.5 X 6 BP | 64 | 0H6167C | 1 | WIRE ASSY,BATT POS/STARTER,XG |
| 13 | 0H9527 | 1 | ASSY BUTTON HANDLE XG | 65 | 075763A | 2 | BOOT, BATTERY CABLE |
| 14 | 0G8465 | 2 | GRIP NUBBED 1-1/4"X4-3/8" | 66 | 0H6167B | 1 | WIRE ASSY,BATT NEG/ENG BLK,XG |
| 15 | 0G8486 | 2 | CAP NUT 5/16-18 ZBC | 67 | 052618 | 2 | SCREW HHC M5-0.8 X 12 C8.8 |
| 16 | 0H6887 | 2 | BOLT CARR 5/16-18X2 BLCK ZINC | 68 | 0H3535 | 2 | NUT FLANGE M5-0.8 NYLOCK |
| 17 | 0H2205 | 2 | BEARING,HANDLE,XG | 69 | 0H5246 | 1 | BRACKET, BATTERY HOLD DOWN |
| 18 | 0H9525 | 2 | BEARING EXTERNAL HANDLE XG | 70 | 049820 | 2 | NUT HEX LOCK M8-1.25 NY INS |
| 19 | 051731 | 4 | SCREW HHC M8-1.25 X 50 C8.8 | 71 | 0H4670 | 1 | ASSY,CONTROL PNL,COMPLETE,XG10 |
| 20 | 022145 | 8 | WASHER FLAT 5/16-M8 ZINC | 71A | 0D4804B | 1 | XFMR IDLE CURRENT |
| 21 | 0H3803A | 1 | ASSY FUEL TANK 10 GAL XG EPA | 72 | 0G8382 | 6 | SCREW PPPH #8-16 X .66" BZC |
| 22 | 0G5445 | 4 | SCREW HHTT M8-1.25 X 20 | 73 | 0H6623 | 1 | ASSY MUFFLER GTH530 |
| 23 | 0H2142 | 1 | VALVE HOLDER,FUEL SHUTOFF | 74 | 0C4138 | 1 | GASKET,EXHAUST PORT |
| 24 | 0H3419 | 1 | VALVE,FUEL SHUTOFF | 75 | 0H4563 | 1 | ASSY EXHAUST MANIFOLD GTH530P |
| 25 | 0H3455F | 1 | FUEL HOSE, 200 MM LONG | 76 | 0G3730 | 6 | SCREW SHC M8-1.25 X 20 SEMS |
| 26 | 048031G | 2 | CLAMP HOSE BAND .41 | 77 | 0E9369 | 2 | GASKET EXHAUST GT530 |
| 27 | 0H1326 | 1 | FILTER, FUEL | 78 | 0H5228 | 1 | MUFFLER MOUNTING BRACKET |
| 28 | 0H0958 | 1 | ASSY GAS CAP SEALED - CHROME | 79 | 059637 | 2 | SCREW HHTT 3/8-16 X 3/4 CZ |
| 29 | 0H1345E | 1 | FUEL GAGE, 140 MM LONG ARM | 80 | 0H6144 | 1 | TUBE, HEAT RISER 38MM ID |
| 30 | 0H1357 | 2 | SCREW PPHM M5-0.8 X 12 | 81 | 0H6257 | 2 | 10KW XG WHEEL 10" |
| 31 | 0H1359 | 1 | PLATE, FUEL GAGE | 82 | 0H3798 | 1 | AXLE, 530CC XG |
| 32 | 0H1411B | 4 | RUBBER MOUNT,10.3 ID X 11 HGT | 83 | 0H3443 | 2 | COTTER HAIRPIN 2.56 X .80 |
| 33 | 0H1610A | 4 | INSERT, ANTI-CRUSH FOR TANKS | 84 | 0H0653 | 2 | WASHER FLAT 5/8 ID X 0.039"THK |
| 34 | 0J2537 | 1 | ASSY ENGINE GTH-530 PORTABLE | 85 | 0H3843 | 1 | FOOT SUPPORT, 530CC XG |
| 35 | 0H1113 | 4 | VIB MNT 1.38X1.0X5/16-18 MXM | 86 | 0H7282 | 2 | RUBBER VIBRATION DAMPENER |
| 36 | 0H6559 | 14 | NUT HEX FLANGE WHIZ 5/16-18 | 87 | 0H5837 | 2 | BOLT CARR 5/16-18 X 0.75" |
| 37 | 0H5421 | 2 | VIB MNT .63 X .63 5/16-18 | 88 | 090388 | 7 | SCREW HHTT M6-1.0 X 12 ZINC |
| 38 | 0A1658 | 1 | WASHER LOCK SPECIAL 1/4" | 89 | 030205 | 4 | SCREW FHSC 3/8-16 X 3/4 W/LOCK |
| 39 | 055414 | 1 | LUG SLDLSS #2-#8 X 17/64 CU | 90 | 0H8159A | 2 | SCREW SHC SEMS FLAT M8-1.25X25 |
| 40 | 0742600174 | 1 | GRND WIRE PORT BRG CARR-FRAME | 91 | 0H7252 | 2 | SPACER 5/8" AXLE X 4.7MM |
| 41 | 0D6029 | 1 | SCREW HHTT M6-1.0 X 16 ZYC | 92 | 082025 | 1 | NUT HEX LOCK M5-0.8 NYINS ZINC |
| 42 | 0H4959B | 1 | ADAPTOR HOUSING, W/O TOP SLOTS | 93 | 030795 | 2 | SCREW HHC 5/16-18 X 1 G5 |
| 43 | 0H4960 | 1 | BEARING CARRIER, 10IN ALT | 94 | 0H6167D | 1 | BRUSH WIRE ASSEMBLY,GND-ALT (NOT SHOWN) |
| 44 | 0H4965 | 1 | END COVER, 10IN ALTERNATOR | 95 | 0H6167E | 1 | BRUSH WIRE ASSEMBLY V-REG TO ALT (NOT SHOWN) |
| 45 | 0H5064C | 1 | RTR-102-10.0AD1 CHI XG CANLESS | 96 | 0H1142 | 1 | ASSY, ROLL OVER SLANT VALVE |
| 46 | 0H5065C | 1 | STR ASSY 10KW 10" PORT | 97 | 0H1207F | 1 | HOSE 11MM OD X 5.5MM ID X 26IN |
| 47 | 0G8023F | 1 | BATC 13.4VDC 2.5A V-T XG | 98 | 0H3804A | 1 | WELDMENT FUEL TANK XG RAW EPA |
| 48 | 0H6167A | 1 | WIRE ASSY,PNL GND/FR GND,XG10 | 99 | 0E8388 | 4 | NUT HEX FL WHIZ M6-1.0 |
| 49 | 0H8401 | 1 | BRKT HOLD DOWN BATT CHRGR | 100 | 0H0025 | 2 | ASSY 12VDC POWER JACK W/LUGS |
| 50 | 0H5752 | 1 | SCREW IHHC 3/8-24 X 10.75 G8 | 101 | 058653 | 1 | WASHER FLAT M8 |
| 51 | 022237 | 1 | WASHER LOCK 3/8 | 102 | 070006 | 1 | WASHER LOCK M8 SS |
| 52 | 022131 | 1 | WASHER FLAT 3/8 | 103 | 066311 | 1 | NUT HEX JAM M8 X 1.25 G8 ZY |
| | | | | 104 | 0H7606 | 2 | SCREW BHSC M6-1.0 X 16 ZP |