



# Instruction Manual

Item# GE2010FTBK



## Having Trouble?

Chat with us on your phone

Simply point your phone camera towards the QR code or see our website



[xbrand.us](http://xbrand.us)

or email at

[customerservice@ecintel.com](mailto:customerservice@ecintel.com)

**Monday - Friday 7:00AM - 3:30PM PST**

## Round Sphere Fountain



### Purchased your product online?

We would really appreciate it if you can share your experience with others by reviewing our product on the website from which you purchased.



### Have Questions or Issues? Need help with assembly?

Contact us and we will resolve immediately.

Simply point your phone camera towards the QR code or see our website

**Support Hours M-F 7:00AM - 3:30PM (U.S Pacific Time)**



Chat with us:  
[xbrand.us](http://xbrand.us)



Email:  
[customerservice@ecintel.com](mailto:customerservice@ecintel.com)



Call:  
951-319-4433

## Limited 1-Year Manufacturer Warranty on xbrand.us

### Manufacturer warranty covers:

- Parts that are deemed defective within 30 days will be shipped free of charge, within the 48 contiguous states.
- Any warranty claim after 30 days, will require shipping to be paid by the customer.

Any visible damage due to the neglect, misuse, or abuse will void the limited warranty of the product.

For further information, please contact us:

Chat with us: [xbrand.us](https://xbrand.us)



Simply point your phone camera towards the QR code or see our website

Email: [customerservice@ecintel.com](mailto:customerservice@ecintel.com)

**Purchased your product online?**

**We would really appreciate it if you can share your experience with others by reviewing our product on the website from which you purchased.**



Please use your smart phone camera to scan the QR code.  
Simply point your camera and let the camera scan the  
code below, and click on the link that opens up.



<https://xbrand.us/product/ge2010ftbk/>

**Contents** ..... 2

**What is included** ..... 3

**Assembly instructions** ..... 4

**YouTube video instruction** ..... 5

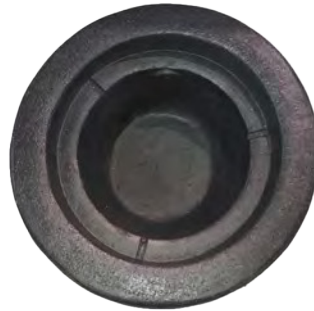
**Warranty** ..... 6

## What is included

## Assembly instructions



A. Fountain Top with LED lights



B. Fountain Bottom



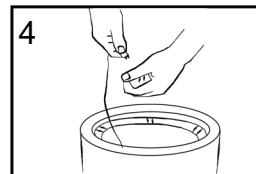
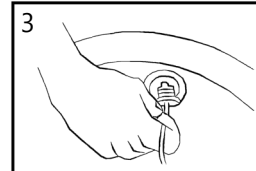
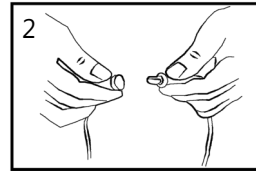
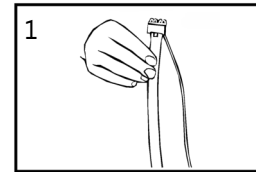
C. Hose



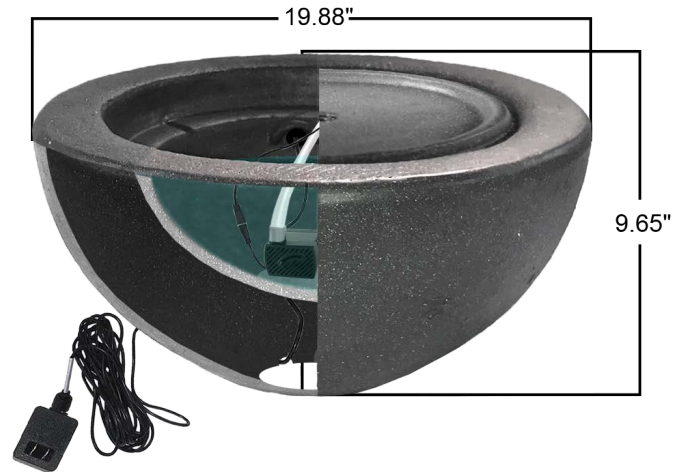
D. Auto Shut-Off Pump



E. LED Cap



1. Connect hose to the LED.
2. Connect the LED to short connection from pump.
3. Make sure longest connection is placed down hole, followed by rubber plug to keep the fountain from leaking.
4. Make sure the pump is fully submerged in water.



This fountain comes with pre-attached LED lights, which can be turned off if preferred. Just disconnect them from the pump and cap the connections.



Scan the QR code for detailed instructions

<https://xbrand.us/product/ge2010ftbk/>