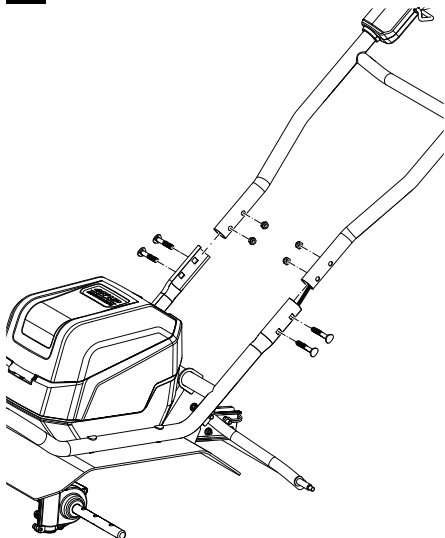


⚠ WARNING:

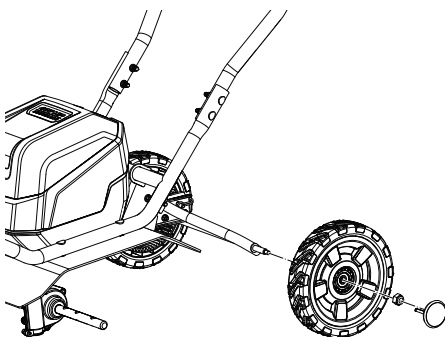
This Quick Reference Guide is not a substitute for reading the operator's manual. To reduce the risk of injury or death, user must read and understand operator's manual before using this product. All page references refer to the operator's manual.

FIRST TIME ASSEMBLY

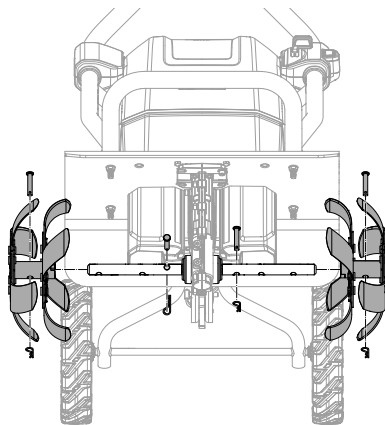
- 1** Install the handle (see page 7).



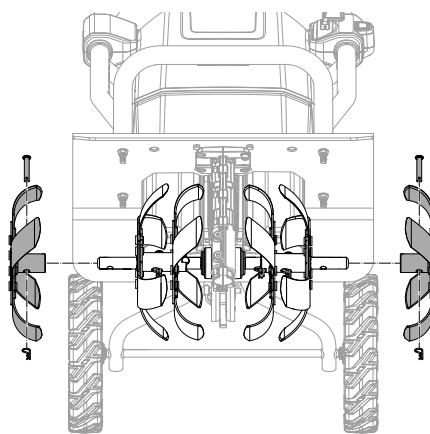
- 2** Install the wheels (see page 7).



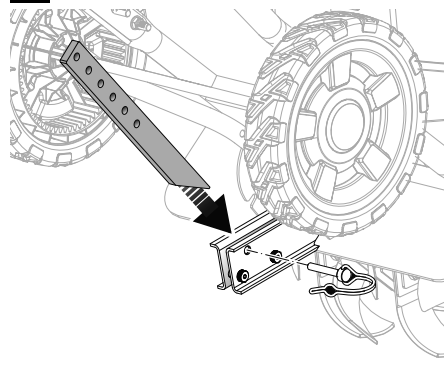
- 3** Install the inner tines (see page 7).



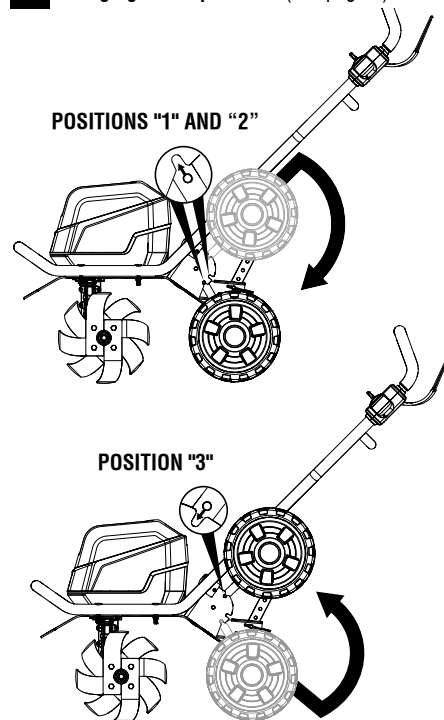
- 4** Install the outer tines (see page 7).



- 5** Install the drag stake assembly (see page 7).

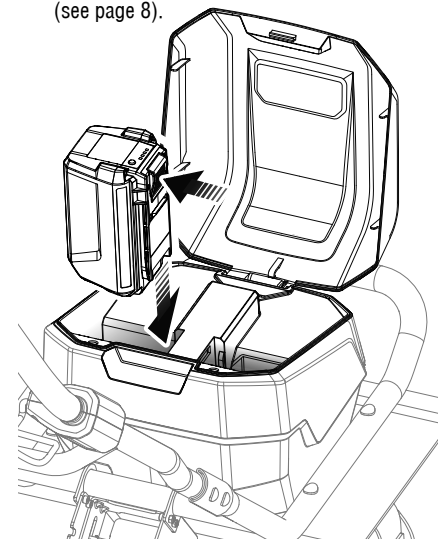


- 6** Changing wheel positions (see page 8).



STARTING THE UNIT

- 1** Align raised ribs on battery pack with grooves in the battery port and install the battery pack into the tiller (see page 8).



- 2** Press and hold the start button. Pull the bail toward the handle and release the start button when the tiller starts (see page 8).



Make the most of your purchase! Go to www.ryobitools.com and register your new tool online. For questions about operating or maintaining your product please call, 1-800-525-2579.