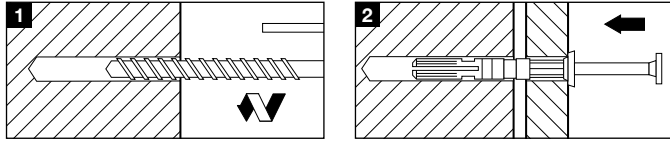


3.3.15 HPS-1 Impact Anchor

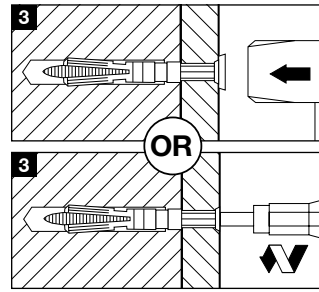
3.3.15.4 Installation Instructions

Solid Base Materials

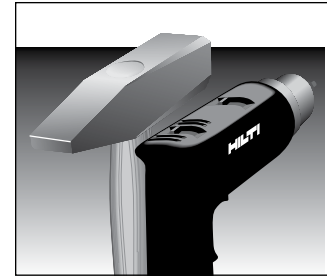


1. Drill hole (depth = anchor length minus thickness fastener plus 1/2").

2. Insert anchor.

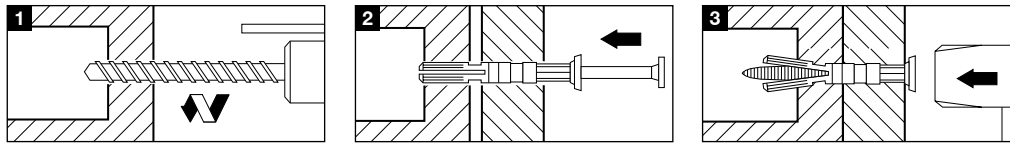


3. Set the anchor with a hammer or with an electric screwdriver.



- Drive with a hammer or an electric screwdriver
- An accurately matched anchor length provides optimized holding power by allowing for expansion in the first part of the brick or block.

Hollow Base Materials



3.3.15.5 Ordering Information

Carbon Steel

Description	Fastenable Material Thickness in Concrete		Fastenable Material Thickness in Hollow Base Materials		Bit	
	max In.	(mm)	max In.	(mm)	Diameter In.	Box Qty
HPS-1 3/16 x 1	3/16	(5)	3/8	(9)	3/16	200
HPS-1 3/16 x 1-1/2	5/8	(15)	3/4	(19)	3/16	200
HPS-1 1/4 x 1	1/8	(3)	3/16	(5)	1/4	200
HPS-1 1/4 x 1-5/8	5/8	(15)	3/4	(19)	1/4	100
HPS-1 1/4 x 2-1/16	1	(25)	1-3/16	(30)	1/4	100
HPS-1 1/4 x 2-5/8	1-5/8	(41)	1-3/4	(44)	1/4	100
HPS-1 5/16 x 1-5/8	3/8	(9)	5/8	(15)	5/16	100
HPS-1 5/16 x 2-1/2	1-3/16	(30)	1-3/8	(35)	5/16	50
HPS-1 5/16 x 3-5/8	2-3/8	(60)	N/A		5/16	50
HPS-1 5/16 x 4-3/8	3-1/8	(85)	N/A		5/16	50

Stainless Steel

Description	Fastenable Material Thickness in Concrete		Fastenable Material Thickness in Hollow Base Materials		Bit	
	max In.	(mm)	max In.	(mm)	Diameter In.	Box Qty
HPS-1 R 3/16 x 1	3/16	(5)	3/8	(9)	3/16	200
HPS-1 R 3/16 x 1-1/2	5/8	(15)	3/4	(19)	3/16	200
HPS-1 R 1/4 x 1	1/8	(3)	3/16	(5)	1/4	200
HPS-1 R 1/4 x 1-5/8	5/8	(15)	3/4	(19)	1/4	100
HPS-1 R 1/4 x 2-1/16	1	(25)	1-3/16	(30)	1/4	100
HPS-1 R 1/4 x 2-5/8	1-5/8	(41)	1-3/4	(44)	1/4	100
HPS-1 R 5/16 x 3-5/8	2-3/8	(60)	N/A		5/16	50
HPS-1 R 5/16 x 4-3/8	3-1/8	(85)	N/A		5/16	50

1 Hilti carbide tipped drill bits