

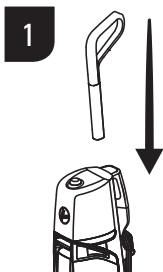


PROFESSIONAL SERIES

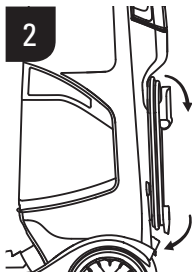
QUICK START GUIDE

NO TOOLS REQUIRED

HOW TO ASSEMBLE

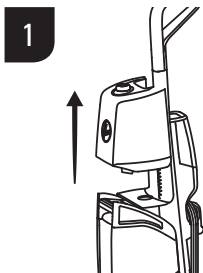


1
Insert handle into the base until you hear a "click".

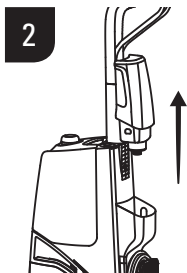


2
Wrap the power cord around the cord hooks for convenient storage.

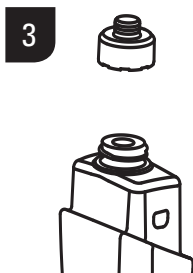
HOW TO USE



1
Remove clean water tank, twist off water cap and add warm water. Replace cap.



2
Remove the Solution Tank from the back of the unit.

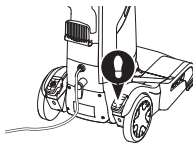


3
Remove the cap and fill with Hoover® Cleaning Solution to the top of the tank. Replace cap.

HOW TO USE (CONTINUED)

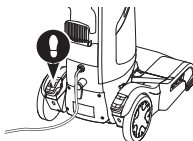
4

Step on the Handle Release Pedal to recline the unit for cleaning position.



5

Step on the Power Pedal to turn unit ON.



6

Slowly move forward. The unit will automatically dispense the optimal amount of water and cleaning solution.



7

Slowly pull backward. The unit will automatically dry your carpets by extracting the water.



**SEE USER MANUAL FOR
COMPLETE INSTRUCTIONS**

Visit us at
www.hoover.com