



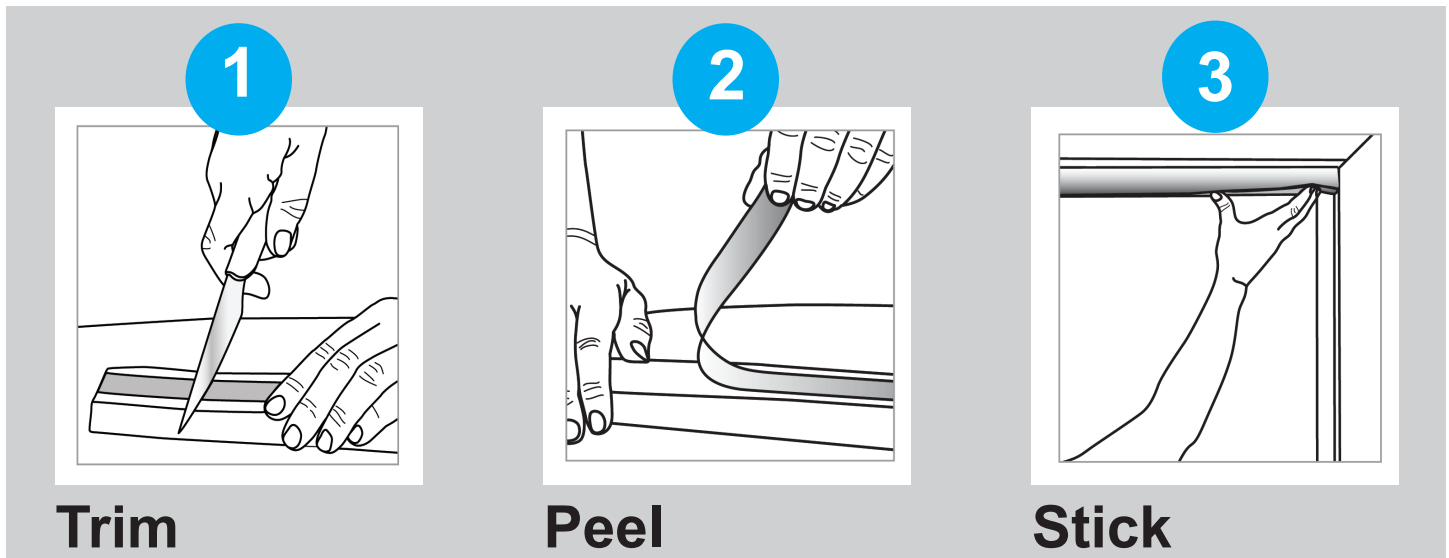
Original Pleated® Shades

Before Installation: Clean mounting surface with lint-free cloth and alcohol. Allow to fully dry.

Fresh paint should be fully cured (check paint manufacturer's cure time).

Adhesive is not recommended for use on varnished, lacquered, or freshly painted surfaces.

Trim using a sharp kitchen knife or utility knife.



- When installing, press firmly across the width of the shade for at least 30 seconds & allow at least 30 minutes for adhesive to cure before operating
- Raise & lower shade to desired height with included clips
- For larger windows overlap two or more shades
- Lightly dust and/or vacuum with upholstery attachment to clean

FAQ

redishade.com/faq

CAUTION: Do not hang Redi Shade products close or near flames (candles, space heaters, etc.).