



# Z5340-PED

20" x 18" Wall Hung Lavatory  
W/ Half Pedestal

TAG \_\_\_\_\_



## Z5340-PED Series

- 20" [508 mm] x 18" [457 mm]
- Vitreous china
- Faucet holes for single or 4" centers
- Wall hung lavatory provided with wall hanger or for use with concealed arm carrier systems
- Vitreous china half pedestal
- Front overflow
- Waste: 1-1/4" O.D.
- Depth: 6-3/8"

### Z5340-PED Series

#### Recommended Trim:

- Z8743-PC** Grid Strainer.
- Z8700** Series P-Trap.
- Z8800** Series Stop with Flexible Supplies.
- Z8946-1-NT** ADA Trap, Stop, and Supply Protectors.

#### Optional Trim:

- Z8746-PC** ADA Grid Strainer.
- Z8946-3-NT** ADA Trap, Stop, and Supply Protectors for Offset Grid Strainers.

#### Engineering Specification:

- Z5341-PED** 20" x 18" vitreous china wall hung lavatory with single faucet hole and half pedestal. Provided with hanger plate and holes for concealed arm carrier systems.
- Z5344-PED** 20" x 18" vitreous china wall hung lavatory with 4" center faucet holes and half pedestal. Provided with hanger plate and holes for concealed arm carrier systems.

*These dimensions and specifications are subject to change without notice.*

*Fixture dimensions meet ANSI/ASME standard A112.19.2 and CAN/CSA B45 requirements.*

*Meets the American Disabilities Guidelines and ANSI A117.1 requirements when lavatory is installed 34" [864mm] from finished floor.*



ZURN INDUSTRIES, LLC. ♦ COMMERCIAL BRASS OPERATION  
5900 ELWIN BUCHANAN DRIVE ♦ SANFORD NC 27330  
Phone: 1-800-997-3876 ♦ Fax: 919-775-3541  
www.zurn.com

In Canada: ZURN INDUSTRIES LIMITED  
3544 Nashua Drive ♦ Mississauga, Ontario L4V1L2  
Phone: 905-405-8272 Fax: 905-405-1292

<b>Architectural/Engineering Approval</b>
---

The information contained in this document is subject to change without notice.  
Please contact Zurn for most up to date information.

See Zurn One Systems for suggested packages.



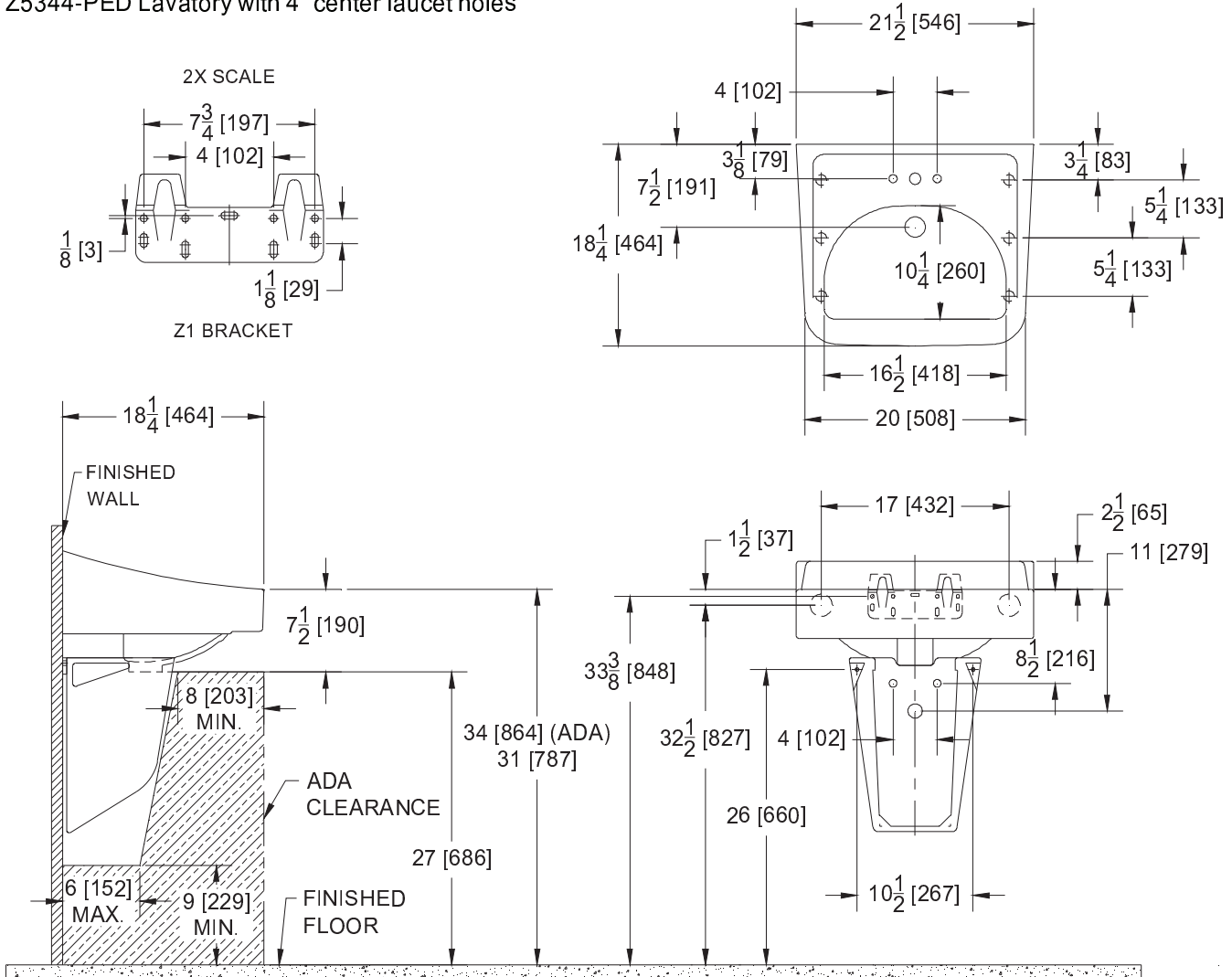
# Z5340-PED

## 20" x 18" Wall Hung Lavatory W/ Half Pedestal

TAG \_\_\_\_\_

Rough-in dimensions for Z5340-PED Series

- Z5341-PED Lavatory with single faucet hole
- Z5344-PED Lavatory with 4" center faucet holes



Note: Rough-in for concealed arm carrier, see Zurn Z-1231 Rough-in sheet.

*These dimensions and specifications are subject to change without notice.*

*Fixture dimensions meet ANSI/ASME standard A112.19.2 CAN/CSA B45 requirements.*

*Meets the American Disabilities Guidelines and ANSI A117.1 requirements when lavatory is installed 34" [864mm] from finished floor.*



ZURN INDUSTRIES, LLC. ♦ COMMERCIAL BRASS OPERATION  
5900 ELWIN BUCHANAN DRIVE ♦ SANFORD NC 27330  
Phone: 1-800-997-3876 ♦ Fax: 919-775-3541  
www.zurn.com

In Canada: ZURN INDUSTRIES LIMITED  
3544 Nashua Drive ♦ Mississauga, Ontario L4V1L2  
Phone: 905-405-8272 Fax: 905-405-1292