



Sheet Vinyl Flooring

BUDGET-FRIENDLY FLOORING FOR BUSY LIFESTYLES



Rustic Taupe

Why Sheet Vinyl?



1 Vinyl flooring can give you the look of hardwood, tile or stone at prices that won't break your budget. The advanced printing and manufacturing technology produces realistic flooring designs that both look and feel authentic.



2 It resists the everyday dings and scratches caused by busy lifestyles, and is even waterproof. Maintenance is simple: just use a broom or a wet mop. More difficult spills can be tackled with common, low pH cleaners.



3 Plus, sheet vinyl provides a soft cushioning that's comfortable underfoot. Its elasticity cushions footfalls, and it's warmer for bare feet.





DID YOU KNOW?

Sheet Vinyl can be installed on any level of your home from basement to attic. So you can have waterproof, natural looks anywhere you want them.

AUTHENTIC BEAUTY. UNREAL PERFORMANCE.

The natural properties of sheet vinyl flooring give it a tremendous performance advantage.

BUILT-IN DURABILITY

Fiberglass core provides strength and stability; surface coating resists scratches, scrapes and scuffs

HIGH-TECH COATING REPELS DIRT, RESISTS STAINS

Prevents grime from sticking to the surface for easier cleanup

WATERPROOF

Liquids bead up on the surface for removal

COMFORTABLE UNDERFOOT

Natural elasticity cushions footsteps





MODULAR NATURAL SLATE



EMERSON WHITE



STEELE GRAY

DESIGNS FOR EVERY DÉCOR

Sheet vinyl flooring is available in a wide range of authentic hardwood, stone and tile looks in a variety of tones and colors. Choose the looks you want and view them on The Home Depot's visualizer tool. You can actually view it in your room. Then order a sample to ensure you get the look you want.



AUTUMN BROWN OAK



WHITE OAK



BLACK & WHITE MARBLE PAVER



LAUREL GRAY

WALNUT PLANK



AVAILABLE IN
HARDWOOD, STONE
OR TILE LOOKS

EMERSON WHITE

HOW TO SHOP



When looking at flooring, different families will have different priorities. Here are a few things to consider to ensure you find the floor that's right for you.

LIFEPROOF™

For busy, active families looking for the **most protection**, Lifeproof luxury vinyl flooring is the right choice. It resists stains better than any other vinyl flooring, protects against scratches and scuffs, and is both pet and kid friendly.



MOHAWK

For beautiful designs with **high performance**, Mohawk resilient flooring offers the perfect solution. Choose the durability level that suits your lifestyle, and you're sure to find a look that you love.



TRAFFICMASTER™

Finally, if you want a good variety of features and styles with **great value**, the TrafficMaster collection is a strong choice. With an array of wood, tile and stone looks, there is a floor to fit every home.



HARDWOOD LOOKS



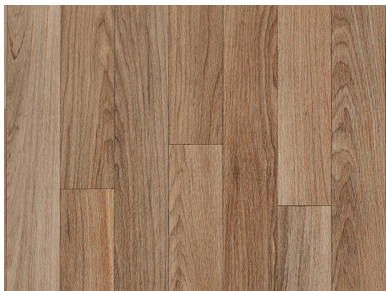
**Mohawk
Sawyer Blonde**
Item #328357839
Model #U6580634K754P15
13.2 ft. W x Cut-to-Length



**Lifeproof
Restored Rosewood**
Item #303030309
Model #U9790537C832L14
12 ft. W x Cut-to-Length



**TrafficMaster
White Oak**
Item #322902532
Model #U4410406K735G14
12 ft. W x Cut-to-Length



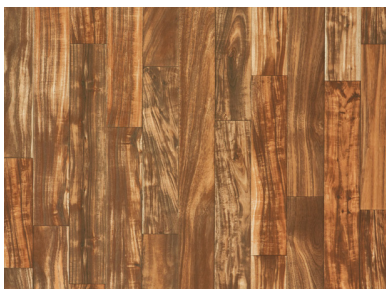
**TrafficMaster
Autumn Brown Oak**
Item #322902535
Model #U9160405K743G14
12 ft. W x Cut-to-Length



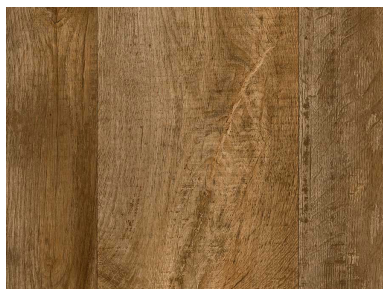
**TrafficMaster
Golden Oak**
Item #322902537
Model #U9160405K764G14
12 ft. W x Cut-to-Length



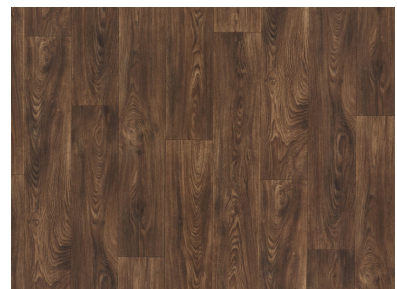
**Mohawk
Hazelnut Oak**
Item #314862150
Model #U8205.119K877P144
12 ft. W x Cut-to-Length



**TrafficMaster
Redwood Acacia**
Item #300866841
Model #C9490406K564G14
12 ft. W x Cut-to-Length



**Lifeproof
Aged Birch**
Item #303030327
Model #U5210537C876L14
12 ft. W x Cut-to-Length



**TrafficMaster
Scorched Walnut Natural**
Item #300866939
Model #U9450.407C844P144
12 ft. W x Cut-to-Length

HARDWOOD LOOKS



Mohawk
Natural Gray Oak
Item #314862137
Model #U8205.119K804P144
12 ft. W x Cut-to-Length



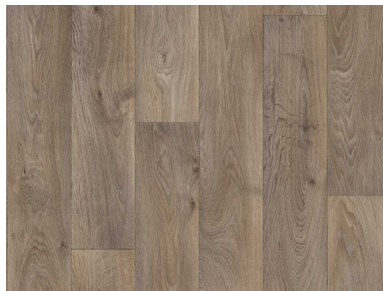
TrafficMaster
Grayson
Item #327773353
Model #U5250632K792G14
12 ft. W x Cut-to-Length



TrafficMaster
Rustic Taupe
Item #322902533
Model #U5210406K861G14
12 ft. W x Cut-to-Length



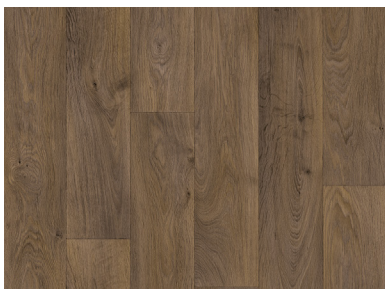
TrafficMaster
Scorched Walnut Grey
Item #300866848
Model #C9450407C895P14
12 ft. W x Cut-to-Length



Mohawk
Walnut Plank
Item #314972319
Model #U8205.119K829P144
12 ft. W x Cut-to-Length



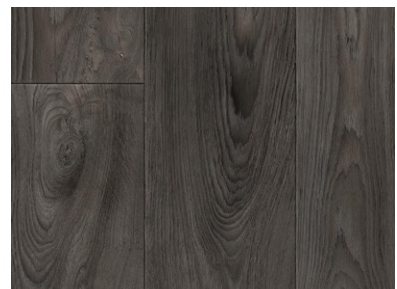
TrafficMaster
Greyed Oak
Item #300866833
Model #U8267.409C892P144
12 ft. W x Cut-to-Length



Mohawk
Oat Straw Plank
Item #312157388
Model #U8205.119K876P144
12 ft. W x Cut-to-Length



Mohawk
Smoked Brown Oak
Item #312157381
Model #C9770406K536G14
12 ft. W x Cut-to-Length



TrafficMaster
Scorched Walnut Charcoal
Item #300866871
Model #C9450407C898P14
12 ft. W x Cut-to-Length

HARDWOOD LOOKS



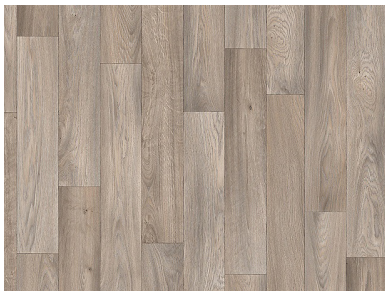
TrafficMaster
Acorn Brown
Item #328358561
Model #U9160405K748G14
12 ft. W x Cut-to-Length



TrafficMaster
Portage Oak
Item #328358563
Model #U4410406K731G14
12 ft. W x Cut-to-Length



Mohawk
Berwick Brown Wood
Item #328357836
Model #U2720212K845G14
12 ft. W x Cut-to-Length



Mohawk
Cienega Brown
Item #328357853
Model #U8267563K790P15
13.2 ft. W x Cut-to-Length



Mohawk
Cedar Grove
Item #328357840
Model #U9775119K736P14
12 ft. W x Cut-to-Length



Mohawk
Clifton White
Item #328357852
Model #U9450563K891P15
13.2 ft. W x Cut-to-Length



Mohawk
Redondo Brown
Item #328357854
Model #U8205563K537P15
13.2 ft. W x Cut-to-Length



Mohawk
Acacia Brown
Item #328357855
Model #U3890563K843P15
13.2 ft. W x Cut-to-Length



Mohawk
Cherry Bark Oak
Item #328357857
Model #U9450563K858P15
13.2 ft. W x Cut-to-Length

HARDWOOD LOOKS



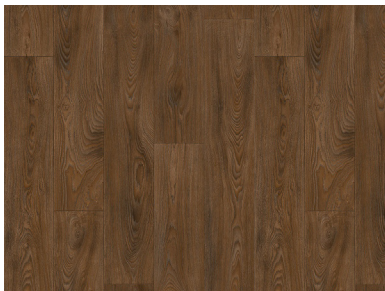
Lifeproof
Magdalena Brown Hickory
Item #328358555
Model #U9775621KV32M15
13.2 ft. W x Cut-to-Length



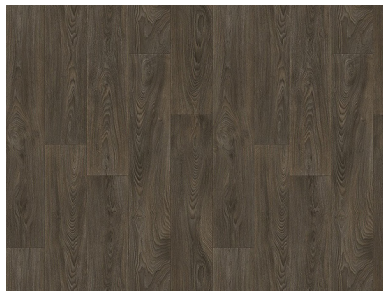
Lifeproof
Pecan Valley
Item #328358559
Model #U9470621K832M15
13.2 ft. W x Cut-to-Length



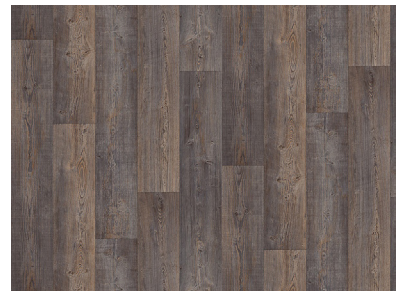
Lifeproof
Elm Grey
Item #328358558
Model #U9540621K792M15
13.2 ft. W x Cut-to-Length



Lifeproof
Cherry Hills
Item #328358564
Model #U9450621KV43M15
13.2 ft. W x Cut-to-Length



Lifeproof
Durango Brown
Item #328358565
Model #U9450621KV43M15
13.2 ft. W x Cut-to-Length



Lifeproof
Pleasant Grove
Item #328358553
Model #U8242621K875M15
13.2 ft. W x Cut-to-Length

STONE & TILE LOOKS



**TrafficMaster
Emerson White**
Item #323186624
Model #U8530407C502P14
12 ft. W x Cut-to-Length



**TrafficMaster
Emerson Gray**
Item #322902451
Model #U8530407C599P14
12 ft. W x Cut-to-Length



**Lifeproof
Smoked Opal**
Item #303030312
Model #U9820537C534L14
12 ft. W x Cut-to-Length



**TrafficMaster
White Marble**
Item #205610178
Model #U6890.258C903P144
12 ft. W x Cut-to-Length



**TrafficMaster
Travertine Grey**
Item #300866831
Model #U9880.407C992P144
12 ft. W x Cut-to-Length



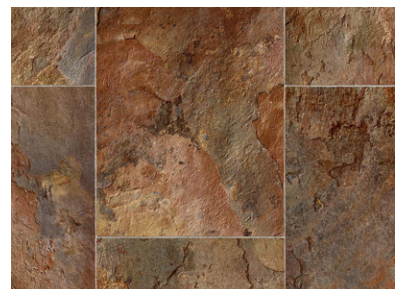
**Lifeproof
Travertine Plank**
Item #303030313
Model #U6880537C932L14
12 ft. W x Cut-to-Length



**TrafficMaster
Havana Gray**
Item #323186657
Model #U5430407C992P14
12 ft. W x Cut-to-Length



**Mohawk
Fowler Tile**
Item #328357838
Model #U5240637K997P15
13.2 ft. W x Cut-to-Length



**TrafficMaster
Rustic Rectangular Slate Clay**
Item #300866873
Model #U4990.407C917P144
12 ft. W x Cut-to-Length

STONE & TILE LOOKS



TrafficMaster
Black and White Marble Paver
 Item #300866856
 Model #C1100405K509G14
 12 ft. W x Cut-to-Length



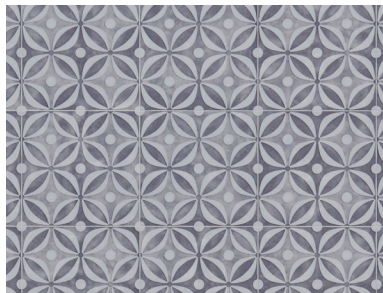
TrafficMaster
Laurel Gray
 Item #322902534
 Model #U4300406K591G14
 12 ft. W x Cut-to-Length



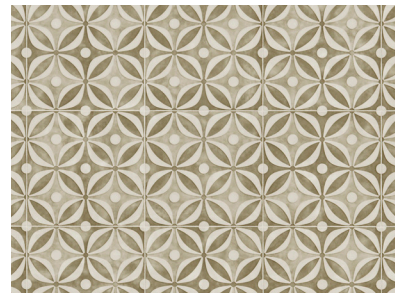
Lifeproof
Dusk Marble
 Item #303030317
 Model #U5810537C909L14
 12 ft. W x Cut-to-Length



TrafficMaster
Steele Gray
 Item #322902538
 Model #U0056407C593P14
 12 ft. W x Cut-to-Length



TrafficMaster
Steele Blue
 Item #323339312
 Model #U0056407C578P14
 12 ft. W x Cut-to-Length



TrafficMaster
Steele Sage
 Item #303030312
 Model #U9820537C534L14
 12 ft. W x Cut-to-Length



TrafficMaster
Modular Natural Slate
 Item #205507857
 Model #U3130.258C938P144
 12 ft. W x Cut-to-Length



TrafficMaster
Neutral Square Slate
 Item #205610170
 Model #U6920.258C990P144
 12 ft. W x Cut-to-Length



TrafficMaster
Refined Slate Neutral
 Item #300866860
 Model #C9770406K536G14
 12 ft. W x Cut-to-Length

STONE & TILE LOOKS



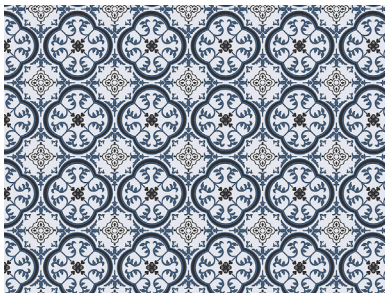
**Mohawk
Egret White**
Item #328357841
Model #U9870119K595P14
12 ft. W x Cut-to-Length



**Mohawk
Buena Vista**
Item #328357842
Model #U5110119K933P14
12 ft. W x Cut-to-Length



**Mohawk
Mesa Verde**
Item #328357843
Model #U9880119K542P14
12 ft. W x Cut-to-Length



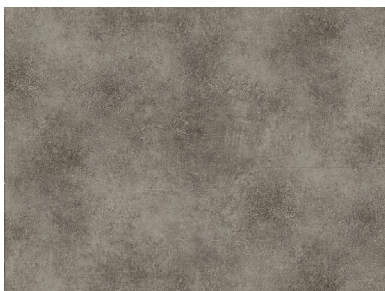
**Mohawk
Floral White**
Item #328357845
Model #U9695563K574P15
13.2 ft. W x Cut-to-Length



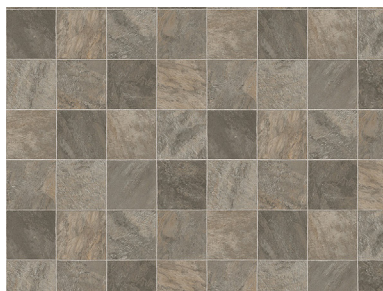
**Mohawk
Garden Velley**
Item #328357847
Model #U9695563K598P15
13.2 ft. W x Cut-to-Length



**Mohawk
Sunset Acre**
Item #328357848
Model #U9880563K993P15
13.2 ft. W x Cut-to-Length



**Mohawk
Warren Grey**
Item #328357849
Model #U4860563K581P15
13.2 ft. W x Cut-to-Length

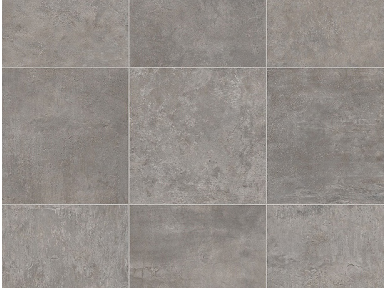


**Mohawk
Southern Hills**
Item #328357850
Model #U5330563K998P15
13.2 ft. W x Cut-to-Length



**Mohawk
White Smoke Stone**
Item #328353074
Model #U3410212K535G14
12 ft. W x Cut-to-Length

STONE & TILE LOOKS



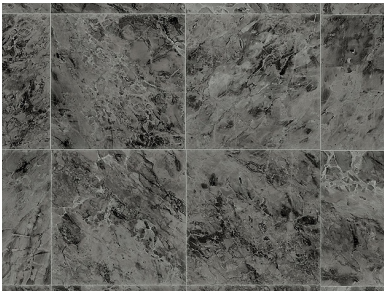
Lifeproof
Fischer Grey
Item #328358557
Model #U9870621K594M15
13.2 ft. W x Cut-to-Length



Lifeproof
Essex Grey
Item #328358562
Model #U6430621K991M15
13.2 ft. W x Cut-to-Length



Lifeproof
Prestwick Grey
Item #328358556
Model #U9580621K543M15
13.2 ft. W x Cut-to-Length



Lifeproof
Moon Valley
Item #328358554
Model #U6450621K999M15
13.2 ft. W x Cut-to-Length



Lifeproof
Esplanade White
Item #328358560
Model #U5260621K504M15
13.2 ft. W x Cut-to-Length

HOW MUCH DO YOU NEED?

Once you've decided upon your new floor, it's time to measure your room to ensure that you have enough sheet vinyl to cover the floor. Keep in mind that most sheet vinyl rolls come in standard 12-foot widths. So, if your room size is 11.5 feet or less, the standard roll size is enough to cover this space. If it's wider than 11.5 feet, you'll have to seam the installation, and you might want to call in a professional installer. For simple installations using a standard width, follow these simple steps to determine the approximate amount of material needed:

- 1 Measure the width of your room; if less than 11.5 feet, a standard roll size will work.
- 2 Measure the longest point of the room and add 6 inches for uneven walls, thresholds, etc.
- 3 Multiply the length x width to find the square feet
- 4 Add 10% for waste or repairs (calculate by multiplying sq. ft. x 1.10), keep any excess material in case of damage in the future
- 5 Divide the square feet by 9 to determine the square yards
- 6 Round up to the next full square yard
- 7 Take all your measurements and final number to your local store or professional installer

LET'S GIVE IT A TRY

Say your room is 10'6" wide by 14'3" long, and you've chosen a simple pattern for your room. You'll want to use the standard 12' roll size to cover the width of the room.

To determine the length of the floor, you'll measure the longest points, in this case 14'3" and add 6 inches to cover areas like doorways, thresholds or uneven walls. Your total will be 14'9" (or 14.75") long.

No seam is needed for this room and there is no unusual pattern so you'll be using a standard width that is cut the length you need. You'll add these measurements together and add 10% to get the final number of square feet. Then divide that number by 9 and you have converted the square feet into square yards. Take the number of square yards and round up for your final total.

THE FORMULA FOR THIS ROOM:

STEP 1: $12 \times 14.75 = 177$ square feet

STEP 2: $177 + 10\%$ (or $\times 1.1$) = 194.7

STEP 3: $194.7 \div 9 = 21.6333$

STEP 4: Round up to 22 square yards

WIDTH MEASUREMENT IS 10'6" + 6" = 10'11" TOTAL - FITS A STANDARD 12' ROLL

LENGTH MEASUREMENT IS 14'3" + 6" = 14'9" - CUT-TO-LENGTH

GOT SEAMS? GET HELP.

In some installations you may need to seam your floor:

- If a room is wider than a standard roll width (12 to 13 feet) or
- If the flooring design dictates its' orientation in the room

You may need to seam a simple installation depending upon room size and how the pattern is oriented in the room (see diagrams at right). These installations will require seams, and you will need to purchase additional material.

For more complex installations with patterns or seams, we recommend calling a professional. Ask your Home Depot representative for more information.

STANDARD SIZE ROOMS

When measuring a room, keep in mind that you don't have to measure around cutouts or odd-shaped areas of the room. Just measure the longest points in the room, and the cutouts will be handled in the installation. Many homes are built with standard room sizes, so we've put together a chart in order to help you determine the approximate amount of material needed for these rooms. (See chart).



ROOM SIZE	ROOM SQ. FT.	12 FT. ROLL WIDTH		13.2 FT. ROLL WIDTH	
		LF ORDER QTY.	SY ORDER QTY.	LF ORDER QTY.	SY ORDER QTY.
4' x 6'	24	4.5	6	4.5	6.6
5' x 6'	30	5.5	7.3	5.5	8.1
5' x 7'	35	5.5	7.3	5.5	8.1
5' x 9'	45	5.5	7.3	5.5	8.1
6' x 8'	48	6.5	8.7	6.5	9.5
6' x 9'	52	6.5	8.7	6.5	9.5
6' x 10'	60	6.5	8.7	6.5	9.5
7' x 9'	62	7.5	10	7.5	11
7' x 10'	70	7.5	10	7.5	11
8' x 10'	80	8.5	11.3	8.5	12.5
9' x 9'	81	9.5	12.7	9.5	13.9
8' x 12'	96	12.5	16.7	12.5	18.3
10' x 10'	100	10.5	14	10.5	15.4
10' x 12'	120	12.5	16.7	12.5	18.3
10' x 14'	140	14.5	19.3	14.5	21.3
12' x 12'	144	Difficult Due To Roll Width		12.5	18.3
10' x 16'	160	16.5	22	16.5	24.2
12' x 18'	216	Difficult Due To Roll Width		18.5	27.1
16' x 18'	288	Seam Required — Call Store For Ordering		Seam Required — Call Store For Ordering	
16' x 20'	320	Seam Required — Call Store For Ordering		Seam Required — Call Store For Ordering	

Minimum order = 5 square yards

MEASURE WORK SHEET

$$\boxed{12} \times \boxed{\text{ROOM LENGTH} + 6''} = \boxed{\text{SQ. FEET}}$$

ROLL WIDTH

If your room width is less than 11.5' total, round up to use the 12' roll width.

$$\boxed{\text{SQ. FEET}} + \boxed{10\% \text{ EXTRA}} = \boxed{\text{TOTAL SQ. FEET}}$$

$$\boxed{\text{TOTAL SQ. FEET}} \div \boxed{9} = \boxed{\text{TOTAL SQ. YARDS}} \rightarrow \boxed{\text{ROUND UP}}$$

to next full sq. yard to be ordered.

Once the measurement is complete, take it to The Home Depot® or go to homedepot.com to place the final order. If you have any concerns, your Home Depot representative can help.

CALL IN A PRO

Some situations could require you to call in a professional to measure your floor as well as install it. If seams are required due to the width of the room, or if the pattern match is difficult, extra material will be required. Consider going right to a pro for a more accurate measurement. Just call us or go online to set up an appointment.

Easy maintenance extends the life of your floor.

Caring for sheet vinyl is simple. Sweeping and wet mopping at regular intervals can help prevent scratches from dust and debris. Steam cleaning is not recommended.

If water or other liquids spill, they will bead up on the surface. Clean them up promptly to minimize the risk to the subfloor. Tougher spills can be removed with common, low pH cleaners.

With periodic maintenance, your floors can last for decades.





KNOW EXACTLY WHAT YOU WANT?

Call 1-855-MEASURE or visit homedepot.com/flooringmeasure.



EMERSON GRAY

