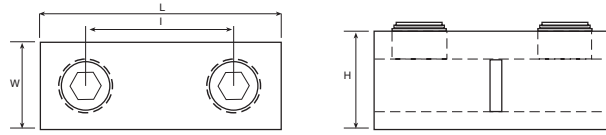


Dual-Rated Mechanical Connectors

Type ASR — ALCÜL™ Splicer Reducer with Solid Barrier Wire Stop



CAT. NO.	CONDUCTOR RANGE (AL OR CU)		DIMENSIONS (IN.)			
	MAX.	MIN.	L	W	H	I
ASR0214*	2 Str.	14 AWG	1¼	33/64	39/64	21/32
ASR1114*	1/0 Str.	14 AWG	1½	39/64	23/32	5/64
ASR2506	250 kcmil	6 Str.	2½	55/64	31/32	13/64
ASR3506	350 kcmil	6 Str.	2¾	1½	1½	1¼
ASR7525**	750 kcmil	250 kcmil	6¼	1½	1¼	1½

* Slotted screws

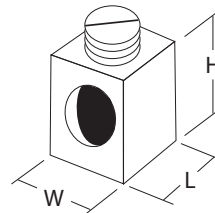
** Two set screws per end. Not CSA Certified.

UL 486B

AL9CU

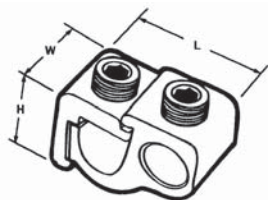
Type BX — ALCÜL™ Rectangular Connectors

- Features anti-rotational boss
- UL486B Recognized (90°C rating)



CAT. NO.	CONDUCTOR RANGE		STYLE & SIZE OF BOSS	BOSS HOLE TAPPED	DIMENSIONS (IN.)		
	MAX.	MIN.			L	W	H
BX0214	2	14CU 12AL	Square .229 in.	10-32	15/32	15/32	9/16
BX1114	14CU 1/0	Square 12AL	.229 in.	10-32	5/8	17/32	39/64

Type GP — Aluminum Dual-Rated Mechanical Parallel Tap Connectors



CAT. NO.	CONDUCTOR RANGE (AL OR CU)		DIMENSIONS (IN.)		
	MAIN	TAP	W	L	H
GP-2*	2-12 Str.	4-14	5/8	1½	7/8
GP-0	1/0-2	1/0-14	3/4	1¾	1
GP-250-0	250-1/0	1/0-14	1½	2½	13/16
GP-250	250-1/0	250-6	1½	2½	13/16
GP-350	350-4/0	350-6	1¾	2½	13/16
GP-500	500-350	500-2	1¾	3½	1¾
GP-750	750-500	500-2	1¾	3½	2

* Slotted screw, tap side.

To include insulating cover, add suffix WC.