

1. REMOVE THE PULL KNOB AND BASKET ASSEMBLY

2. DISASSEMBLE THE OUTLET BY REMOVING THE MAIN CONNECTING SCREW

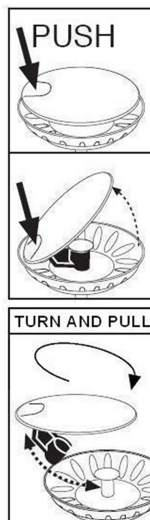
3. SEPARATE THE PARTS AND PLACE THE THIN RUBBER GASKET UNDER THE STAINLESS STEEL OUTLET TOP AND CENTRE IT IN THE 90 mm SINK HOLE FROM ABOVE.

4. FIT THE LARGE RUBBER WHASHER INSIDE THE TOP RIM OF THE PLASTIC UNDERBODY AND CENTRE IT ON THE SINK HOLE FROM UNDERNEATH.

5. FIT THE MAIN CONNECTING SCREW FROM ABOVE AND TIGHTEN, TAKING CARE THAT THE THIN GASKET STAYS CORRECTLY POSITIONED.

6. REPLACE THE PULL KNOB AND BASKET ASSEMBLY AND TEST FOR LEAKS.

7. CONNECT TO WASTE PLUMBING ACCORDING TO RELEVANT PLUMBING REGULATIONS.



PULL KNOB & BASKET ASSEMBLY

SINK BOWL

STAINLESS STEEL OUTLET TOP WITH THIN RUBBER GASKET

LARGE RUBBER WHASHER

PLASTIC UNDERBODY

