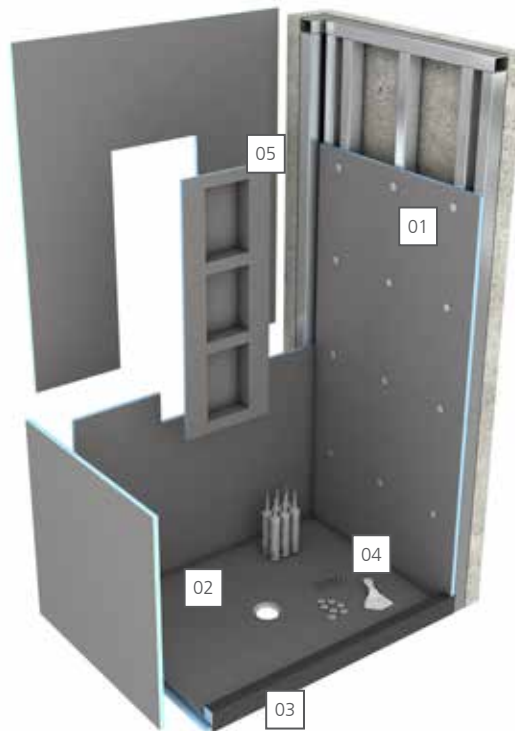


wedi Shower Kit – Primo®

Full Shower System in a Box



All products needed to build a wedi Fundo Primo point drain shower are included and provide a single manufacturer warranty. Safe transportation in one box, easy estimating of product quantities needed. The shower floor units feature a strong and pre-sloped surface which can be tiled over immediately whether you choose mosaic size or large format tile. Pre-sloped extension panels are available so that virtually no limit exists for making any size or shape for custom shower designs happen. Naturally, Fundo Primo is insulating keeping surfaces warmer. Especially when compared to traditional mortar bed installations or other currently known methods for building showers such as those including use of sheet – or liquid waterproofing membranes used in an attempt to manage water exposure – wedi Fundo Primo’s simplicity and high performance shows. The most unique advantage, however, is the complete and natural core waterproofness of the wedi product and its completeness and range of components that will form an entire assembly system with Fundo Primo engineered to fit and last. This is a true system with full warranty coverage.

- 01 wedi Building Panel
- 02 wedi Fundo Primo Shower Base
- 03 wedi Full Foam Curb Lean
- 04 Screws, Washers and Putty Knife
- 05 wedi Niche (optional)

*Found in each kit:

- Fundo Primo Shower Base (1)
- wedi 36 in. or 48 in. x 60 in. x 1/2 in. Building Panels (4)
- wedi Full Foam Curb, Lean (1)
- wedi Fundo Kit Drain Standard (1)
- wedi Joint Sealant (7 10.5 oz. tubes)
- wedi Fastener Kit (1, screws/washers 100 ct.)
- wedi Corner Putty Knife (1)
- wedi Mixing Valve Flexi Collar (1)
- wedi Flexi Collar (1)

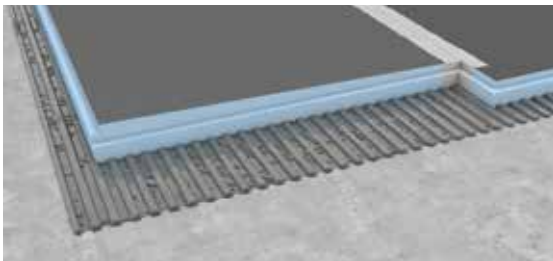
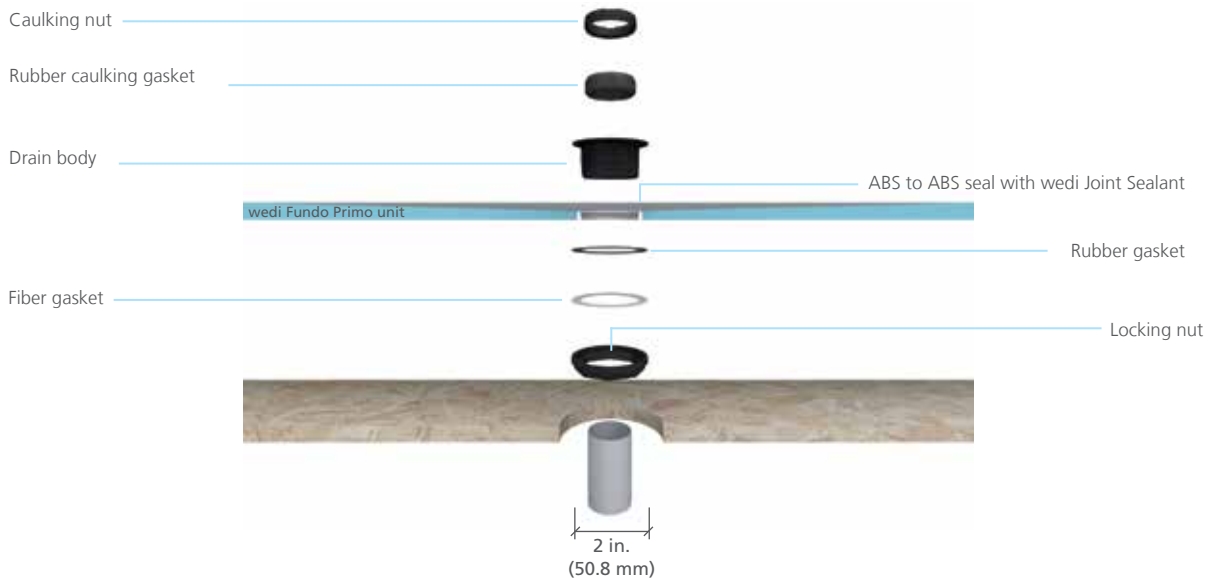
wedi Fundo Primo Product Information

These added values and its detail perfections eliminate the technical concerns in shower installations. However, this is not where wedi shower systems stop offering its added values. The wedi Fundo shower system adds to your productivity and enables you to provide real value to your customers. Our wedi Fundo Shower systems reduce the installation time for just the shower floor from a 2–3 day process (includes drying times) to only 30 minutes when compared to traditional methods built with pre slope, vinyl liner and final mortar bed. wedi helps you to turn showers into service quicker, cleaner and safer. Especially for our contractors, Fundo Primo helps to get to setting tile faster and on a much more consistent and tile friendly surface. Customers will appreciate the “no noise and no dirt/dust” installation. The wedi products do not contain harmful ingredients providing peace of mind to contractors and end users.

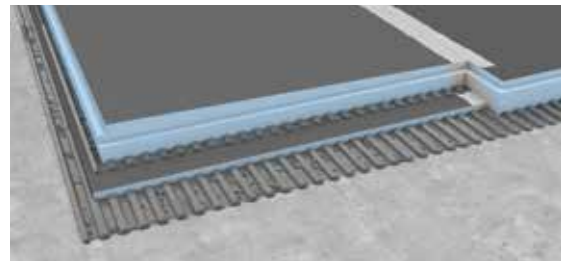
Note for Installation

Optionally a glue drain can be obtained from wedi. For a cement glue connection, the floor pipe must be cut 2 1/4” below the surface of the subfloor. Optionally a brass drain can be obtained from wedi. The installation proceeds as shown for the standard ABS drain provided with each Fundo Primo base.

Drain to Base Assembly



The shower base may be extended using a pre-sloped wedi extension panel.



wedi shower bases thicker than 1 1/2 in. where an extension is connected require a wedi building panel be placed under the extension panel to adjust for a proper connection fit.

! Note 2 in. outside diameter is nominal (2 3/8 in. for PVC/ABS schedule 40 pipe and 2 in. for cast iron/copper). Several Fundo Primo models naturally feature different perimeter height or thickness at the edge. Therefore, pre-made standard notch connections of wedi curbs must be modified in the field for a tight fit to the bases. Ramps and Extension panels can naturally not fit to all models and might be modified in the field as well.

wedi Fundo Primo® Installation

Before Installation:

- Have 2 × 4 blocking installed over bottom plate between studs along to support wedi Building Panel to shower base transition area.
- Subfloor is stable, even and load bearing, and meets deflection criteria of maximum L/360 as per IRC. Wooden or concrete structural substrates are dry and sufficiently load bearing considering live and dead load. Wood and Steel framing is sufficiently load bearing, plum and square.
- Floor drain assembly below floor is stabilized, fixed and supported in position, and will not sink under water load.
- Only wedi products (Building Panels, Curb, Joint Sealant and Fasteners) are used for wedi Fundo Shower System assembly.
- Installer has received instructions from wedi Technical Sales Staff or is informed about proper installation methods as described.
- wedi Shower Bases can be cut to size using a skilsaw. The Z notch channel must be remade and cleaned from sawdust or other possible contamination
- Follow applicable state or local plumbing codes requiring specific and dimensioned waterproofed areas for a shower system or other wet room installation. Requirements in this manual supersede local plumbing codes; they extend and are not in conflict. wedi Shower Systems or other wet room installations in which non-wedi product is also used require specific project recommendations by wedi and may reduce the extent and installation area of protection offered by wedi's warranty..
- Ensure that no fasteners are used and penetrate through any horizontal building panel or shower base surfaces in shower or immediate wet rooms. This includes tub decks, pony shower wall tops, curb tops made from building panels, seat tops. wedi panels in such areas are installed in a full surface applied thinset mortar setting bed.



- Seams in the assembly, which are not flat transitions or right angle inside corner connections, are treated with these extra steps:
 - Assembly parts are installed tight and offer a minimum of ½ in. wide continuous contact/ adhesion surface between two parts, inside which wedi joint sealant is continuously applied.
 - wedi joint sealant is applied over these seams topically, and 1 in. wide on both sides of the seam.
 - wedi mesh tape is installed over these seams and covered with joint sealant 1 in. wide on both sides of the seam.



Cut the 2" (50.8 mm) pipe flush (or max. 1/8" [3.2 mm] above) to the floor construction. Make sure that the cut out fits to the Fundo panel drain. Cut out a 5" (127 mm) diameter hole around the 2" (50.8 mm) pipe to allow for the wedi drain to be inserted into the subfloor while the cut out area must remain free of deflection. The drain and trap have to be sturdily fastened to the sub floor. Assemble the drain unit following the instruction drawing.



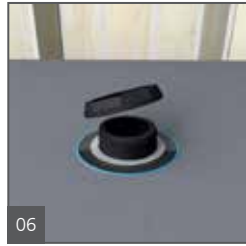
Set up a continuous 1/4" (6.4 mm) bead of wedi sealant along the top side of the wedi Fundos' valve groove profile. Optionally you can apply the bead on the underside of the main drain body's flange. This will help keeping sealant off the threads of the main drain body when it is inserted.



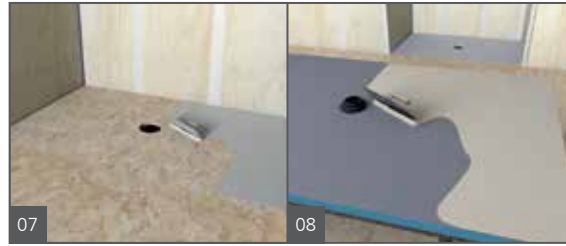
Drop the drain body firmly into the sealant.



Turn the Fundo base upside down and apply the rubber and the fiber gasket.



Tighten the gaskets firmly to the bases' steel ring using the locking nut. Make sure the drain body is still safely received in the valve-bead of sealant. Smooth out excess sealant over the drain body's flange surface.



Skim coat the thinset ANSI 118.4 and comb through with a 1/4" x 1/4" (6.4 x 6.4 mm) notched trowel. Channels pointing to the entrance. Trowel the thinset on the rear side of the Fundo again using a 1/4" x 1/4" (6.4 x 6.4 mm) notched trowel. There are different ways to ensure good bond of the wedi Base to the subfloor. Required is a setting bed thickness of min. 3/16" (4.8 mm) and max. of 5/16" (7.9 mm) (compressed). Applying thinset on both, wedi Base and subfloor, is recommended to achieve full surface coverage adhesion. Another best practice is to use fast setting mortar to achieve faster bond and adhesion.



Press the Fundo firmly into the thinset bed, ensuring that the installation is level and void free. Apply some weight equally and leave on surface and drain area to allow the thinset to initially cure without being disturbed (e.g. thinset bags).



Set up the rubber caulking gasket (with the beveled side up) around the 2" (50.8 mm) pipe in the subfloor. The rubber gasket must be flush with the upper end of the 2" (50.8 mm) ABS or PVC pipe. **Do not use any lubricants.**



Tighten (squeeze) the rubber caulking gasket firmly with the caulking nut (use a flat headed screwdriver) and finally insert the plastic frame and strainer on top (without adhesive). The frame and strainer will be held in a grout joint only once tiling commences. Do not tighten the gasket prior to 60 minutes after the threaded drain part was sealed into the shower base.



Set up a continuous 1/2" (12.7 mm) bead of wedi Joint Sealant along the pans channel on the outer perimeter and only in areas where you can immediately install a wedi Building Panel into the fresh sealant.



Push the wedi Building Panel all the way into the channel of the shower base channel and its bead of sealant. Smooth out any pushed out sealant on inside seam using a putty knife. Fasten the panels directly to the studs starting 1 ft. (304.8 mm) above the base and in corners while keeping the board pushed down into the channel, and set the fasteners at a rate of 1 fastener per 1 ft. (304.8 mm). 1 extra fastener is set into the seam to the next panel to create a flush transition. wedi requires wedi Building Panels to be installed in all areas exposed to water and in any case no lower than 6" (152.4 mm) above all water inlet fixtures.



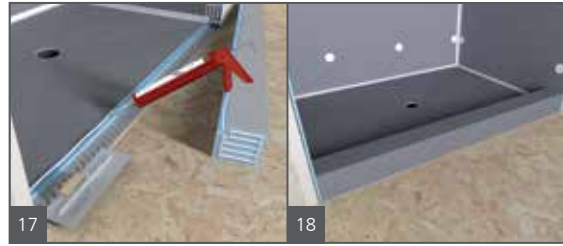
Apply continuous 1/2" (12.7 mm) beads of sealant between all connections of panels and install with tightly butted seams. Excess sealant must be spread flat with a putty knife. All seams and fastener heads in the assembly are covered with a secondary 1/2" (12.7 mm) bead of sealant and spread flat. The seams should be covered 1" (25.4 mm) on either side of seam. All fastener/washers are covered with sealant stretching 1" (25.4 mm) over the washer edges.



wedi Niches are installed in a cut out in the wedi wall and attached with it's flange right into the center of 16" (406.4 mm) o.c. studs. wedi Joint Sealant is set along the connection of wall to niche.

2 Fasteners on each side of the niche are set to create a flush transition to the wall panels. Another 1/2" (12.7 mm) bead of wedi Joint Sealant is spread over fasteners and seams.

i For the installation to properly work it is critical to waterproof all penetrations of the wedi product such as shower valves and shower heads using the appropriate sealing gaskets for the application. The wedi Mixing Valve Flexi Collar and wedi Flexi Collar (for 1/2" – 3/4" [12.7 – 19 mm] shower pipe protrusions) are used for these applications and are part of the wedi System complete warranty.



A continuous 1/2" (12.7 mm) bead of sealant is set into the channel and along the vertical curb notch part. A circle of 1/2" (12.7 mm) sealant bead is set against the wall panels (and) or the curb sides where the curb attaches. A 1/2" x 1/2" (12.7 x 12.7 mm) bed of thinset mortar is applied to the subfloor and a skim coat on the bottom surface of the curb as a best practice. The tightly fitting curb is pressed into the connection area. Weight is applied for a minimum of 30 minutes on and against the curb (from outside) and another 1/2" (12.7 mm) bead of sealant is applied over all curb seams and spread flat. The seams must be covered 1" (25.4 mm) either side of a seam.

! Curb connection notches must be cut to fit select Primo bases with perimeter thickness higher than 1 1/2" (38.1 mm). Do not place fasteners in horizontal areas or mesh treatment in angled corner seams.

After Installation

All visible joints or seams in the installation are visibly covered and reinforced with wedi Joint Sealant applied flat over the seams. Coverage of wedi Joint Sealant over all seams should be at least 1 inch (25.4 mm) on either side of the seam. The wedi Joint Sealant should be no less than 1/16 inch (1.6 mm) thick for strength. Do not add mesh tape into the wedi Joint Sealant. This may only put the waterproofing performance at risk and will not strengthen the sealant's or system's resistance against movement related stresses. Once wedi Joint Sealant application over all shower system seams has been completed, an optional water flood test may be performed as early as 2 hours later. The test should not exceed 24 hours and nor should the water level exceed the height of the perimeter seams so that the fresh sealant may continue to a full cure without too much weight added during that process. wedi recommends to test at least the drain connection for its proper seal while a full surface flood test is not technically required for non-absorbing products like wedi but may be required by a building inspection department. When tiling commences, no premixed and organic ("mastic") tile adhesives must be used over wedi Systems in any wet area installation. When tiling the wedi Shower Bases, incl. extensions or ramps, tile thickness should generally not be less than 1/8" (3.2 mm). Choose setting materials appropriate for the type of stone, ceramic or glass tile as well as for a wet area installation. Tile with a square size of 2 x 2" (50.8 x 50.8 mm) or more may be installed using a polymer modified cement based tile adhesive and grout. Tile with a square size of less than 2 x 2" (50.8 x 50.8 mm) may be installed using a polymer modified cement based tile adhesive and require 100% solids epoxy grout. Tile with a square size of 1 x 1" (25.4 x 25.4 mm) or less must be installed using a 100% solids epoxy tile adhesive and grout. Only non-flat bottom pebble stone installations including in part small mosaics may be installed using polymer modified cement based tile adhesive and grout, all flat bottom pebble stone installation are subject to the general tile size based setting materials recommendation outlined above. When installing non-square tile, the length of the shortest tile edge(s) is considered as its square size for the purpose of determining the choice of the setting materials as outlined above.

All tile installations designed to receive heavier point loads such as from wheelchair use, must be grouted using 100% solids epoxy grout. Large format tile may be installed over wedi Fundo shower bases. Cuts may have to be made in consideration of the base's slope lines and so that such tile can always be fully supported by the tile adhesive setting bed and the surface of the wedi Base. Tile adhesive coverage under the tile must be 95% and special care must be taken to achieve good transfer of adhesive to wedi's Shower Base when working with mesh backed tile. Use only solvent and acid free cleaners and sealers on tile and grout installed over wedi product and apply such products only in amounts as needed to treat the surface materials without drenching the substrate. Follow setting materials manufacturer's recommendations and contact wedi with any questions or regarding applications not covered here.

wedi Drain Cover Assembly / Insertion

Insert cover frame into base hole (no glue/no screws). You may caulk between part and tile to create a flexible grout joint. Optional Extension Collar can be cut to height if part is needed. The caulk joint must not create a water barrier damming up the water draining through the thinset bed into the drain from below the tile. Therefore the thinset layer must be continuous toward the drain. Use the black plastic extension collar if you need to raise the wedi frame and cover. Cut extension collar to size and insert below the frame/cover. If not needed, the extension collar may be disposed of as it is not necessary for the functioning of the wedi installation.

