



TOTE-ALONG OWNER'S INSTRUCTIONS

42 GALLON - P/N 30844



NEW hardware accessories included with this tank: improved (better quality) sewer hose WITH the adaptors already attached (yahoo-finally), improved garden hose, improved 3" caps with strap permanently attached.



42 Gallon Tote out of box.

Contents: Instructions, warranty card, tow handle, pin for handle, black square cap for handle, 1 grey filler hose, 1 bobber gauge, 1 garden hose cap, 1 gasket for small black cap, 2 - 3" caps with straps and 1 sewer hose assembly (bayonet adaptors attached).

Step 1 - Take everything out of the box (tank., handle and hardware bag).

Step 2 - Take everything out of the plastic bag.

Step 3 - Attach tow handle (be sure the handle is turned the correct way--with the loop facing out or away from tank, so the handle will lean against tank when it is attached). Attach square black plastic cap to tow handle.



Attach tow handle with pin.



Tow handle with pin attached.



Tow handle attached to tank



Attach black cap.

Step 4 – The caps with rubber straps go on the tank for transporting. Attach one cap/strap on the top of the tank and attach the other cap/strap to the side (where the gate valve is located). You remove the caps to attach the 3" sewer hose for emptying.



3" cap with strap attached--top of tank



3" cap with strap attached--side valve



Step 5 - Attach garden hose cap (as shown).

IMPORTANT NOTES: Do not tow your tank faster than 5 mph (or walking speed). This may damage tank or wheels and will NOT be covered under warranty. The pneumatic tires may need air periodically. Inflate with a bicycle air pump. An air compressor may over inflate and damage tire tubes (not covered under warranty).

If you have any questions or concerns regarding any of Barker products, please feel free to call us at 1-800-537-9940 or 1-888-367-6978 or (269) 965-2371. Customer Service hours are Monday-Friday 8:00 AM to 4:30 PM (EST).

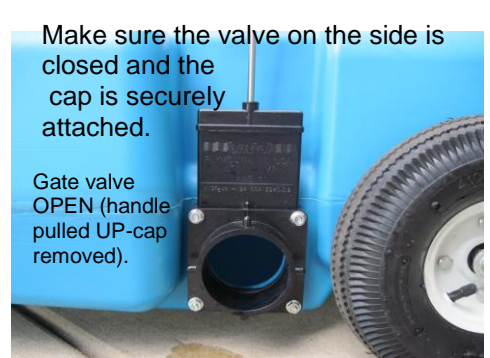


Barker Manufacturing Co.
269-965-2371 or 888-367-6978

1125 Watkins Road / PO Box 460
E-Mail: sales@barkermfg.com

Battle Creek, MI 49016

Over please...



Make sure the valve on the side is closed and the cap is securely attached.

Gate valve OPEN (handle pulled UP-cap removed).

At the campsite, attach one end of assembled sewer hose to the top of the tank (as shown in first picture above) and the other end to waste valve on trailer. Make sure the gate valve is closed (picture 2 above) and the 3" cap is securely attached. (Hose and adaptors are new and differ from the picture—updated pictures coming soon.)



Bobber Gauge-- Tank is empty

Remove the garden hose cap and install the bobber gauge. Once tank is full (you can tell from the bobber gauge), it needs to be emptied.

Remove the sewer hose from trailer waste valve and the tank (you don't want to tow the tank with the sewer hose attached). Attach the 3" cap to top of tank (where sewer hose was attached).

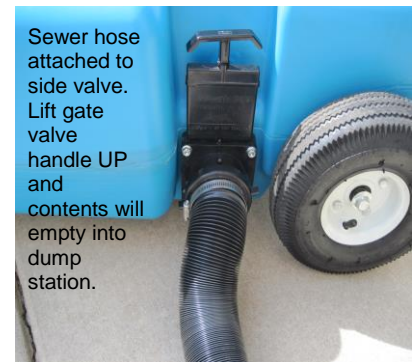


Bobber Gauge - Full tank--time to empty tank

Now you can hook the tow handle to the hitch ball on whatever you have to drive around (car, golf cart, bike, etc.). Bring your sewer hose with you, you will use it at the dump site.



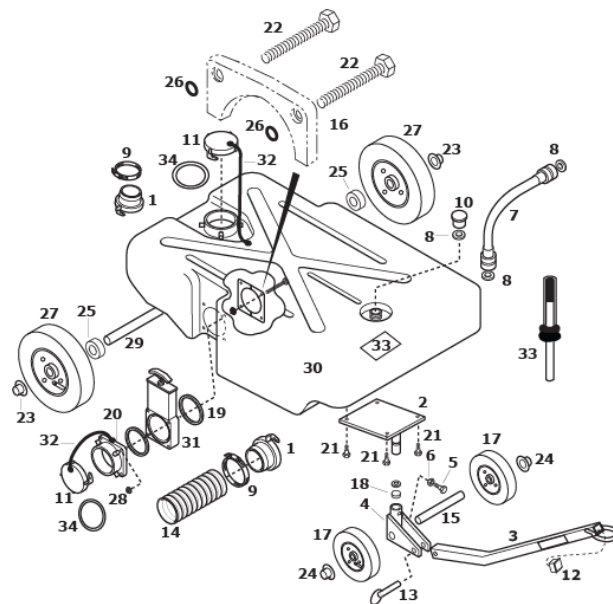
(If you are done with your camping trip, bring your garden hose with you so you can rinse your tank.) At the dump site, attach one end of the sewer hose to the side of your tank and the other end to the dump station. Remove the garden hose cap or bobber gauge for ventilation. Open the gate valve on the side of the tank by pulling UP on the black handle and the contents of the tank will empty.



Sewer hose attached to side valve. Lift gate valve handle UP and contents will empty into dump station.

Now you take the grey water hose and attach it where it was vented (picture to the left). You can hook up the water supply at the dump station and rinse your tank. Put both 3" caps back on empty tank and take your accessories with you back to camp.

ITEM	PART NO.	REQ'D	DESCRIPTION
1	26060	2	ADAPTOR ASSEMBLY (3")
2	25905	1	SPINDLE ASSEMBLY
3	25911	1	TOW BAR
4	25910	1	AXLE SUPPORT
5	600-0055	1	HEX BOLT (#10-32 X .38)
6	610-1020	1	HEX NUT (#10-32)
7	15655	1	FILLER HOSE ASSEMBLY
8	10225	3	HOSE WASHER
9	10400	2	HOSE CLAMP
10	11576	1	HOSE CAP (3/4")
11	26048	2	CAP (3")
12	25912	1	CAPLUG (#FP-205)
13	643-0007	1	QUICK RELEASE PIN
14	12316	1	SEWER HOSE (5')
15	27183	1	FRONT AXLE
16	25916	2	RETAINER PLATE DUMP VALVE
17	32273	2	WHEEL (6")
18	25918	1	SPINDLE BEARING
19	25921	2	VALVE SEAL (3")
20	25922	1	BAYONET AND FLANGE (3")
21	600-0056	4	HEX HEAD BOLT (1/4-20 X .62)
22	600-0054	4	HEX HEAD BOLT (1/4-20 X 2)
23	615-0001	2	PUSH NUT (5/8")
24	615-0002	2	PUSH NUT (1/2")
25	617-0083	2	BUSHING
25	617-0098	2	BUSHING (32 GAL)
26	635-0019	4	"O" RING
27	32274	2	WHEEL, REAR (10")
28	610-0025	4	FLANGE NUT
29	26136	1	REAR AXLE
30	30912	1	TANK 42 GALLON
31	25923	1	WASTE VALVE (3")
32	26097	1	STRAP (3")
33	30955	1	BOBBER GAUGE
34	26096	2	GASKET)



Barker Manufacturing Co.

1125 Watkins Road / PO Box 460 Battle Creek, MI 49016 269-965-2371 or 888-367-6978