



NEO SMARTPEN

# papertube<sup>®</sup>

User Guide

## What's in the package



---

Neo Smartpen dimo(D1 ballpoint pen tip)  
AAA Battery 1ea  
Stylus tip  
Smart Plate

Smart Class Note(Notebook)  
Paper Controller  
Smart device stand  
User Guide

---



papertube

This package includes video production application.  
Download PaperTube® app and, Showcase Your Story!



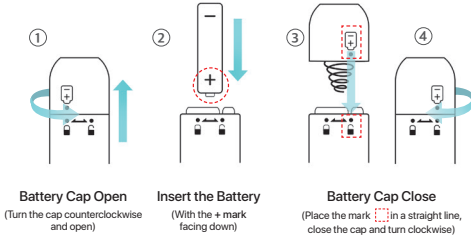
<for AOS>



<for iOS>

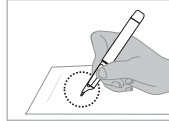
# Get Ready

## Insert the battery into the pen referring image guide.



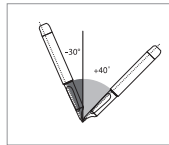
## Holding the Pen

The recognition rate is affected by the direction of the optical sensor's angle. The sensor (oval shaped part adjacent to the pen tip) should face downwards. Deviating from the appropriate angle, or holding the pen in the wrong direction could cause difficulties with capturing your writing or drawing.



### Usage Angle

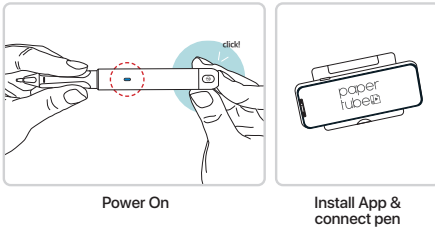
Hold the pen with the ball point nib facing up



### Allowable Recognition Angle

Product's acceptable recognition angle is  $-30^{\circ} \sim +40^{\circ}$  ( $90^{\circ}$  vertical standard)

## Press the power button for 1 second, and connect it to PaperTube™ app.



## LED Color Status Key

Status / 상태	LED Color/Action / 컬러
Power ON / Stand by	light on
Power OFF	and light off
Low battery (lower than 20%)	light on
Low battery (lower than 10%)	flashes
Connected to App	light on
Firmware update	flashes
Fail to update firmware	flashes
Optical lens on the pen cannot read the code on the paper	light on

## Select the mode in your preference to make your lecture video.



**1. Make a video only with handwriting.**  
(use a blank notebook)



**2. Annotate PDF imported**  
(use my own material)

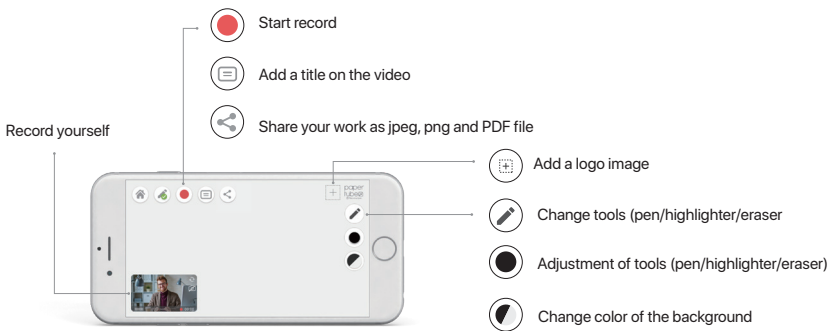
# Introduction of PaperTube™



<English>

PaperTube is a video production app that creates visual contents for spreading your ideas. You can create a variety of videos through your blank notes or your own material. Also, your own template can be printed with Ncode A4 paper using blueprint function. Scan the QR code on the right to look around how people use PaperTube™ app for online lectures and remote classes.

## APP ICON FUNCTION



## HOW TO USE

with blank notebook	with my own material	with my own material
<p>Use a Smart class note</p>	<p>Plate Mode</p> <p>Use a Plate</p>	<p>Print Mode</p> <p>Use a printed Ncode A4</p>

Ncode A4 is a paper where Ncode is imprinted and it is specialized for printing the contents for PaperTube.

## Tips

### For Android Device Users

Turn on flight mode to prevent any possible interruption by notification while recording.

### For All Users

Please make sure Bluetooth enabled on your device before connection.

## Pen Firmware Updates

Please update the firmware to the latest version. After connect the pen to App, Go to management > Firmware update.

※ Do not disconnect or turn off the power while the update is in progress.

\* For M1(F50), N2(F121) users, please update the pen firmware, to use hover function that indicates the position of the pen on PaperTube app.

## PaperTube™ Controller Function

PaperTube controller which can let you select various effects on PaperTube app screen just by touching with Neo smartpen helps you to create video contents easily without navigating.

**Connect a Neo smartpen demo to PaperTube™ app and touch the icon with the pen.**



Page Control

Sound effect

1. Start recording
2. Stop recording
3. Undo
4. Redo
5. Eraser
6. Delete all

7. Zoom in
8. Zoom out
9. Page width fit
10. Page height fit
11. Zapplause
12. Magic

13. Drum
14. Pass
15. Fail
16. Disappointed



Thickness

Pen Colors

Camera Control

For PDF documents

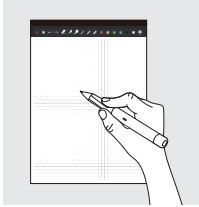
17. Ballpoint pen
18. Stroke thickness down
19. Stroke thickness up
20. Highlighter
21. Red
22. Yellow

23. Green
24. Light Blue
25. Black
26. White
27. Camera on/off
28. Camera opacity down

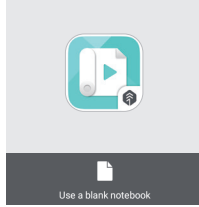
29. Camera opacity up
30. Camera full-view
31. Previous Page
32. Next Page

# USE A BLANK NOTEBOOK

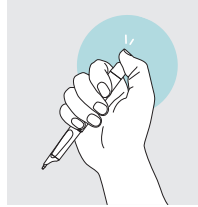
## Connecting the pen to App



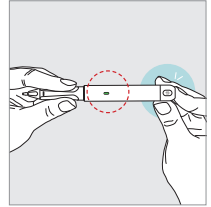
Prepare the note



Open the app and select 'blank notebook'



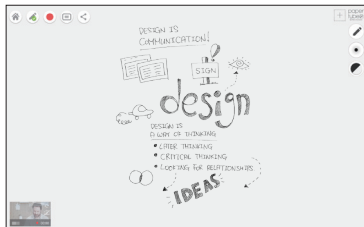
Turn on the pen and connect to App



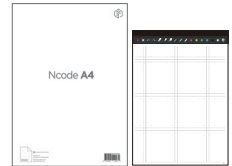
LED turn into green when connected

## Writing & Recording

1. Click if you want to add a title in the beginning of your video.
2. Click if you want to add logo of your institute.
3. Touch to start recording.
4. Create unique and professional contents with your handwritings.
5. Touch to stop recording
6. Click to save your video work, or click to upload it on youtube directly.
7. Click to share handwriting as PDF, PNG and JPG



## Tips!



Ncode A4, and other Ncode imprinted papers work with the app as well.



## Notice

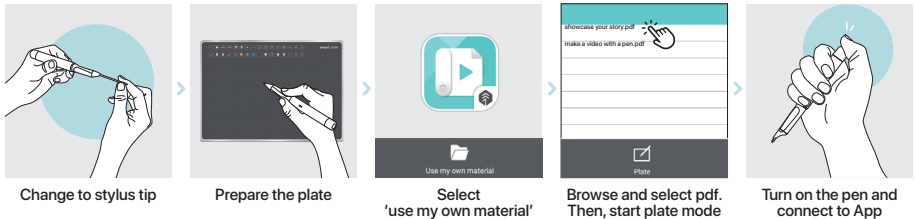
Plate works on 'plate mode' only.

Device Storage	Minimum required storage
16 Gb	1 Gb
32 Gb	2 Gb
64 Gb or above	4 Gb

Please check the storage of your device before start recording.

# USE MY OWN MATERIAL\_Plate mode

## Connecting the pen to App



## Writing & Recording / 필기 & 영상 녹화

1. Click , If you want to add a title in the beginning of your video.
2. Click , If you want to add logo of your institute.
3. Touch to start recording. Write and draw on the PDF with a Plate.
4. Touch with a pen to move to previous/next page.
5. Touch with a pen to zoom in and out the pages.
6. Touch to stop recording
7. Click to save your video work, or click to upload it on youtube directly.

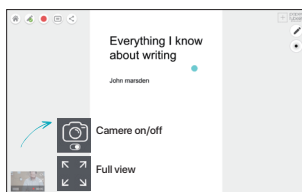
### Tips!



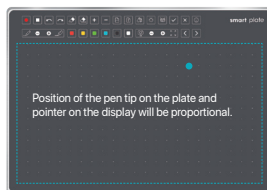
Icons on the plate help you to control functions of the app more easily.

### Notice

1. Smart Class Note and other notebooks does not work on 'Plate mode'
2. If stylus tip is worn out, your writing cannot be recognized. Please change stylus tip and try again.



<PaperTube App>

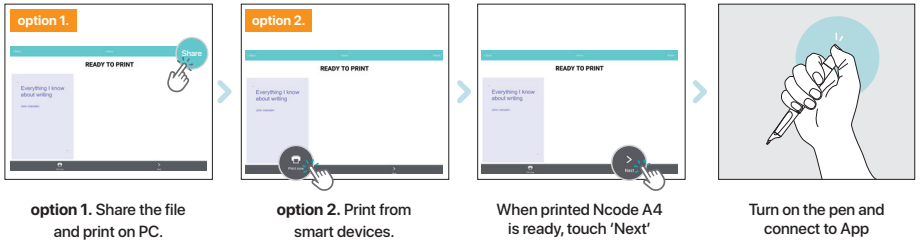
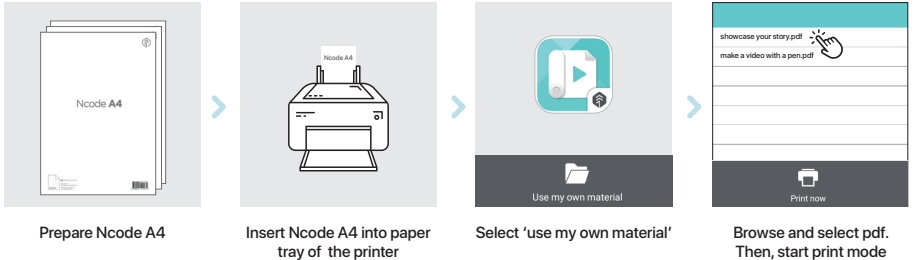


<Smart Plate>

# USE MY OWN MATERIAL\_Print mode

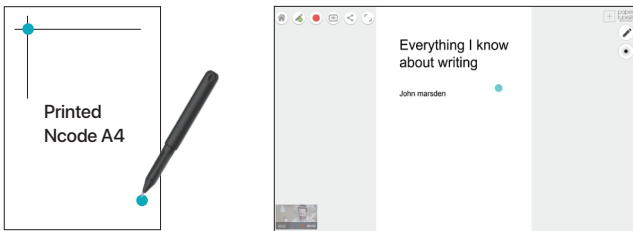
※ Ncode imprinted paper product needed. shop at Amazon.com

## Connecting the pen to App



## Calibration

※ For matching the paper and the screen of PaperTube app, please follow the on-screen instructions.



### Adjust calibration

This process will adjust the writing area and the app screen area to be synchronised.



# FAQ

## Reset

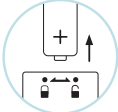
Please reset the pen if it does not turn off, won't charge, or stops working. To reset the pen, press and hold the power button for 10 seconds or remove and reinsert the battery, then the pen will be turned off and restart.



### Tips for using the correct battery

- The enclosed alkaline batteries can be natural discharge.
- Batteries are consumables and should be replaced after a certain period of time. In addition, the usage time varies depending on the usage environment.
- Be sure to remove the battery when you will not be using the pen for a long time to prevent paid service due to leakage.
- Manganese battery or rechargeable battery can not guarantee the use time.

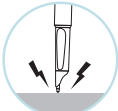
## Precautions



Be sure to remove the battery when you will not be using the pen for a long time. Prevents paid service due to leakage.



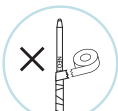
Please be careful not to cover the optical sensor with your fingers. Otherwise, your writing may not be recognized.



When a strong impact is applied to the ball pen nib, the product may malfunction.



For more accurate handwriting recognition, please use the recommended nibs. (You can check the recommended pen nib list on the Neo smartpen official website.)



In case of processing ball pen nib with tape, it may cause malfunction.

### Additional

- Storing pen without pen cap may cause degradation of functionality due to dust and foreign substances on the optical sensor.
- The pen cap should be placed on the pen if not in use and if the cap gets dirty, please clean with soft cloth or cotton swab.
- If you write on the edge of the page where there is no code, your handwriting may not be recognized.

Please check the details and frequently asked questions on the Neo smartpen homepage and online mall. [www.neosmartpen.com](http://www.neosmartpen.com)



Please visit official Neosmartpen mall to buy compatible notebooks and accessories.

<https://shop.neosmartpen.com/>

## Product Specification

Model Name		NWP-F30	
Supported		OS version	Bluetooth version
Android		6.0 Marshmallow and above	BLE 4.0 and above
iOS		iOS 13 and above	LE 4.1 and above
Pen Body Material		Polycarbonate	
Connectivity		Bluetooth 4.2 (Classic / BLE)	
Receiving/Transmitting Frequency		2402~2480MHz	
RF Output Power		3mW / Class 2	
Type of emission		F1D	
Battery		Alkaline battery(AAA/R03) 1ea	
Runtime		Nonstop writing : 9.5 Hr	
Memory		2MB of internal memory (Saves up to about 3 sheets of A4 size)	
Ink refills		D1 pen ink refills	
Function		Real time-transfer mode	
Usage Environment		Temperature for storage(No operation) : -10 ~ 50°C Relative humidity : ~90% Operation temperature : 10~35°C	
Length / Diameter / Weight		140 mm / 14.7mm / 26.5g	

製品仕様	無線機能及び対応規格				
	Bluetooth (BT)	Bluetooth LE (BLE)	Wi-Fi	4G/LTE	5G
Bluetooth	○	○	○	○	○
Bluetooth LE	○	○	○	○	○
Wi-Fi	○	○	○	○	○
4G/LTE	○	○	○	○	○
5G	○	○	○	○	○

**FCC Information to User**  
This equipment has been tested and found to comply with the limits for a Class B digital device, pursuant to Part 15 of the FCC Rules. These limits are designed to provide reasonable protection against harmful interference in a residential installation. This equipment generates, uses and can radiate radio frequency energy and, if not installed and used in accordance with the instructions, may cause harmful interference to radio communications. However, there is no guarantee that interference will not occur in a particular installation. If this equipment does cause harmful interference to radio or television reception, which can be determined by turning the equipment off and on, the user is encouraged to try to correct the interference by one of the following measures:  
- Reorient or relocate the receiving antenna.  
- Increase the separation between the equipment and receiver.  
- Connect the equipment into an outlet on a circuit different from that to which the receiver is connected.  
- Consult the dealer or an experienced radio/TV technician for help.

**Caution**  
Modifications not expressly approved by the party responsible for compliance could void the user's authority to operate the equipment.

### IMPORTANT NOTE : FCC RF Radiation Exposure Statement

This equipment complies with FCC RF radiation exposure limits set forth for an uncontrolled environment. This equipment should be installed and operated with a minimum distance of 20 centimeters between the radiator and your body. This transmitter must not be co-located or operating in conjunction with any other antenna or transmitter.  
**NOTE: THE GRANTEE IS NOT RESPONSIBLE FOR ANY CHANGES OR MODIFICATIONS NOT EXPRESSLY APPROVED BY THE PARTY RESPONSIBLE FOR COMPLIANCE. SUCH MODIFICATIONS COULD VOID THE USER'S AUTHORITY TO OPERATE THE EQUIPMENT. THIS DEVICE COMPLIES WITH PART 15 OF THE FCC RULES. OPERATION IS SUBJECT TO THE FOLLOWING TWO CONDITIONS: (1) THIS DEVICE MAY NOT CAUSE HARMFUL INTERFERENCE, AND (2) THIS DEVICE MUST ACCEPT ANY INTERFERENCE RECEIVED, INCLUDING INTERFERENCE THAT MAY CAUSE UNDESIRABLE OPERATION.**

### IC Information to User

This device complies with Industry Canada's licence-exempt RSSs. Operation is subject to the following two conditions: (1) This device may not cause interference, and (2) This device must accept any interference that may cause undesired operation of the device. Le présent appareil est conforme aux CNR d'Industrie Canada applicables aux appareils radio exempts de licence. L'exploitation est autorisée aux deux conditions suivantes : (1) l'appareil ne doit pas produire de brouillage, et (2) l'utilisateur de l'appareil doit accepter tout brouillage radioélectrique subi, même si le brouillage est susceptible d'en compromettre le fonctionnement.

## PRODUCT WARRANTY

Please contact the store where you purchased the product or  
NeoLAB Convergence for customer service/support.

### Product Warranty

Product Name	Smart Class Kit
Product No. (Serial No.)	
Purchase Date	
Seller	
Purchase Price	

- Keep the product no. (serial no.) in a safe place as it is required for checking the product warranty period when requesting customer service / support.
- The product no. is attached on the surface of the product package.

