



Arlo Pro 2 Camera System With  
Arlo Audio Doorbell  
Quick Start Guide



# View a tutorial video

To view useful tutorial videos, find troubleshooting tips, or get support, navigate in your browser to [www.arlo.com/support](http://www.arlo.com/support).

For more information look for *How do I set up my Arlo Pro 2 camera with an Arlo Audio Doorbell?*



Scan the QR code  
to view the video.



# What's in the box



Arlo Pro base station



Base station AC power adapter



Ethernet cable



Arlo Pro 2 camera



Rechargeable battery



Camera power adapter



Camera cable



Wall mount



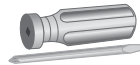
Mounting screws and anchors



Doorbell



AA batteries



Screwdriver



Wall screws and anchors



Wire extensions



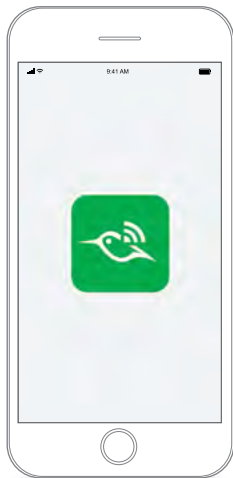
Wire screws



Wire nuts

# Get the Arlo mobile app

The app provides the step-by-step instructions that you need to install your Arlo Pro 2 System and your Arlo Audio Doorbell.



# Install your Arlo devices in this order

1



**Arlo Pro base station**

2



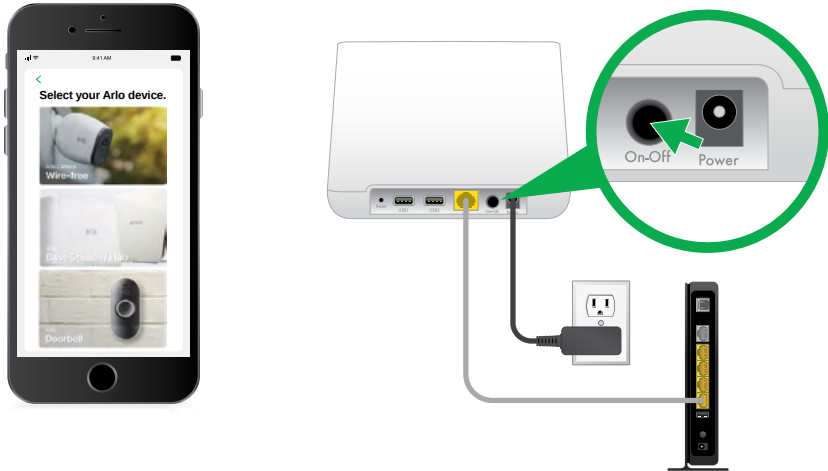
**Arlo Pro 2 camera**

3



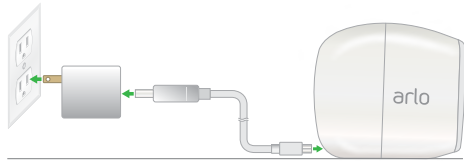
**Arlo Audio Doorbell**

# 1. Power your base station





## 2. Power your camera and add it to your Arlo account



- a. Insert and charge the battery.

Before you use your camera wirelessly, we recommend that you charge the battery.

For AC power indoor use, connect the AC power adapter to an indoor electrical outlet.

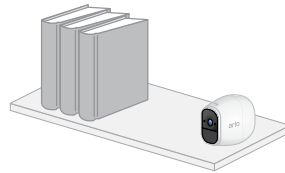
If you want to use an outdoor AC power connection, you need the Arlo Pro 2 outdoor power adapter (sold separately).

- b. Use the Arlo app to add the camera to your Arlo account.

# 3. Place or mount your camera

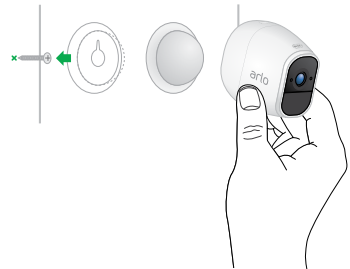
You can place your camera on a flat surface, such as a shelf or desk, or you can mount it on a wall. Choose a location with a clear, unblocked field of view and with a good signal to your base station.

## Place your camera on a shelf or desk.



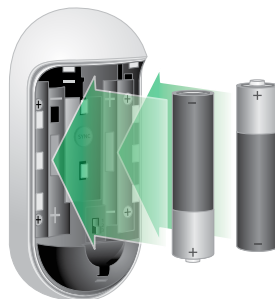
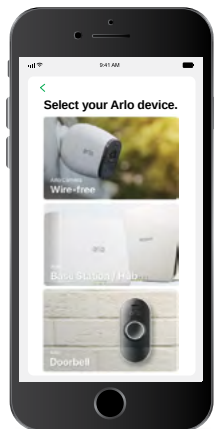
## Mount your camera on a wall.

- a. Fasten the mounting screw into the wall.  
If you're mounting the camera on drywall, use the plastic drywall anchors that we provide.
- b. Hang the mount from the screw.
- c. Place the camera on the magnetic mount.



## 4. Power your doorbell and add it to your Arlo account

- Insert two AA batteries; your doorbell runs on battery power.
- Use your app to set up your Arlo Doorbell and add it to your account.

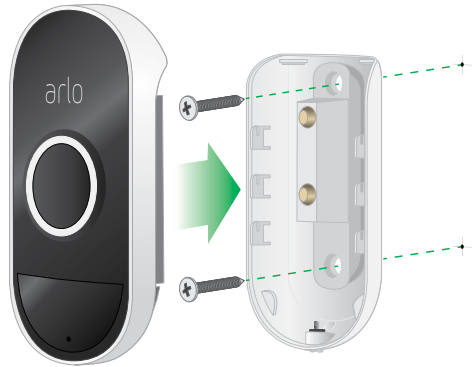


# 5. Mount your Arlo doorbell without wiring

## Mount your doorbell without wiring

- a. Secure the battery cover on your wall using the screws we provide.
- b. Attach the doorbell to the battery cover.

**Note:** To connect your Arlo doorbell to trigger your existing chime, go to page 14.



## Secure the doorbell

Secure the Arlo doorbell with the screw on the bottom of the battery cover.



## 5. Connect your Arlo doorbell to trigger your existing chime (Optional)

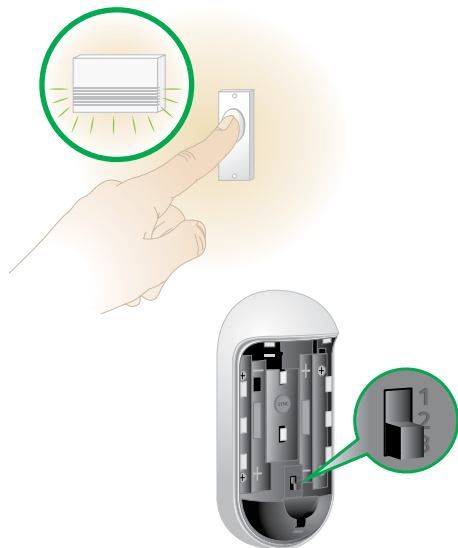
You can connect your Arlo doorbell to existing mechanical or electronic doorbells if they operate at a voltage between 8 and 24 volts AC. Once connected, pressing the button on your Arlo doorbell will trigger your existing chime.

### Set the chime switch

Determine whether you have a mechanical or a digital chime.

Mechanical chimes usually make a sound like ding dong. Digital chimes can have a variety of sounds, some can play tunes.

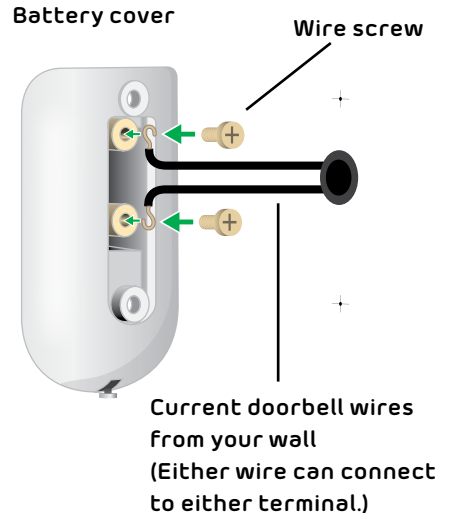
- If you have a mechanical chime, set the chime switch to position 2.
- If you have a digital chime, set the chime switch to position 1.



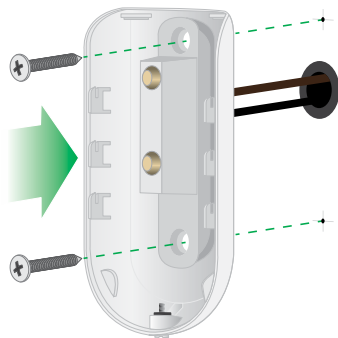
## Connect the doorbell battery cover to your existing chime

- Turn off the power to your current doorbell at the breaker.
- Remove your current doorbell.
- Connect the wires coming out of the wall to the terminals on the back of the Arlo doorbell battery cover with the screws we provide.

If the wires are too short, use the accessories we provide.



- d. Feed the wires back into your wall.
- e. Secure the Arlo battery cover to the wall using the mounting screws.

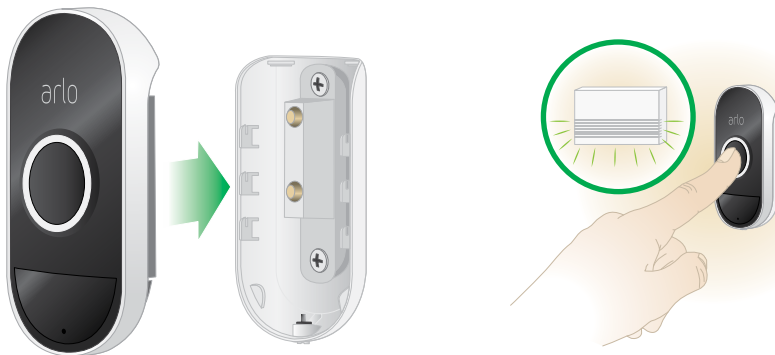


- f. Turn the power on at the breaker.



## Attach the doorbell to the battery cover

- Attach your doorbell to the battery cover.
- Press the doorbell button, listen for a chime:



If you don't hear a chime, remove the doorbell from the battery cover and adjust the chime switch to position 3. Re-attach the doorbell, press the doorbell button, and listen for a chime.

## Secure the doorbell

Secure the Arlo doorbell with the screw on the bottom of the battery cover.



## Use your Arlo app

Use your app to set up and manage all your Arlo devices and your Arlo account.

To view useful tutorial videos, find troubleshooting tips, or get support, scan the QR code or navigate in your browser to visit [www.arlo.com/support](http://www.arlo.com/support).



©2018 Arlo Technologies, Inc. Arlo, Arlo logo, and Every Angle Covered are trademarks of Arlo Technologies, Inc. . Other trademarks are for reference purposes only.

Si ce produit est vendu au Canada, vous pouvez accéder à ce document en français canadien à [arlo.com/docs](http://arlo.com/docs).  
(If this product is sold in Canada, you can access this document in Canadian French at [arlo.com/docs](http://arlo.com/docs).)

## Compliance

To view regulatory information from the Arlo app, tap **Devices**, select your device, open the **Device Settings** menu, and tap **Device Info/Regulatory**.

For regulatory compliance information including the EU Declaration of Conformity, visit [www.arlo.com/about/regulatory/](http://www.arlo.com/about/regulatory/).

This device complies with Part 15 of the FCC Rules. Operation is subject to the following two conditions: (1) this device may not cause harmful interference, and (2) this device must accept any interference received, including interference that may cause undesired operation.

FCC ID: 2APLE18300388

IC ID: 23815-18300388



Arlo International, Ltd.  
Floor 3, Building 3 University Technology Center  
Curraheen Road, Cork, Ireland



Arlo Technologies, Inc.  
2200 Faraday Ave. Suite 150  
Carlsbad, CA 92008 USA

[www.arlo.com](http://www.arlo.com)  
[www.arlo.com/support](http://www.arlo.com/support)

October 2018



201-24192-03