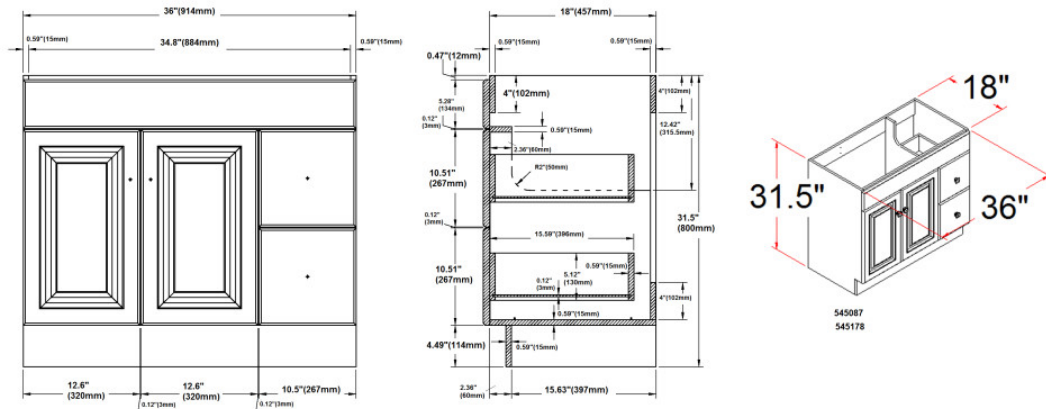


Claremont Unassembled 2-Door 2-Drawer Vanity without Top 36"
Honey Oak



SPECIFICATIONS

MATERIAL CONSTRUCTION:	Wood	FRAME STYLE:	N/A
ASSEMBLY REQUIRED:	Yes	FACE FRAME MATERIAL:	N/A
TOOLS NEEDED FOR ASSEMBLY:	Screwdriver	SIDES MATERIAL:	Particle Board
ASSEMBLED DIMENSIONS:	31.5" H x 36" L x 18" D	BOTTOM MATERIAL:	Particle Board
ASSEMBLED WEIGHT:	74 lbs.	TOE KICK INSET WIDTH:	4.5"
HINGE STYLE:	Concealed	BACK PANEL MATERIAL:	N/A
DOOR STYLE:	2 Raised Panel Oak Doors, reversible	BACK BRACE MATERIAL:	Particle Board
DRAWER STYLE:	2 Oak Drawers		
GLIDE STYLE:	STD Easy Glide		
FAKE DWR STYLE:	N/A		
DWR #1 DIMENSIONS:	15.59" W x 5.12" H		
DWR CONSTRUCTION:	Standard		
SHELF STYLE:	N/A		
SHELF ADJUSTABILITY INCREMENTS:	N/A		
SHELF MAX WEIGHT CAPACITY:	N/A		
SHELF DIMENSIONS:	N/A		
SHELF THICKNESS:	N/A		
SHELF MATERIAL:	N/A		



WARRANTY: 1-Year limited warranty
 CARB COMPLIANT: CARB Phase 2
 TITLE IV COMPLIANT: Yes



TYPE:
 JOB:
 ORDER CODE:
 APPROVALS: