

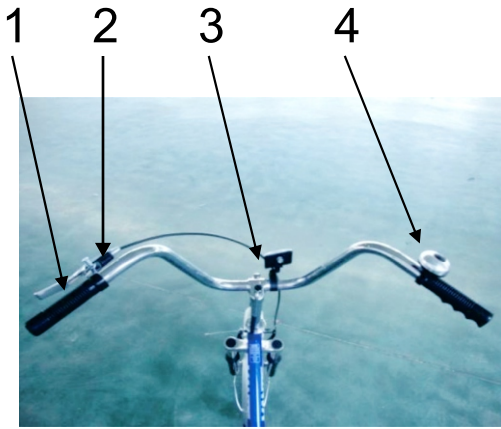
**BEFORE RETURNING THIS PRODUCT CALL:**

**1-877-BIKEAID**

If you should experience a problem with your Cycle Force Group purchase, call 1-877-245-3243. In most cases, a Cycle Force Group representative can resolve your problem over the phone. If you have a suggestion or comment, give us a call. Your feedback is vital to the success of Cycle Force Group's quality improvement program.

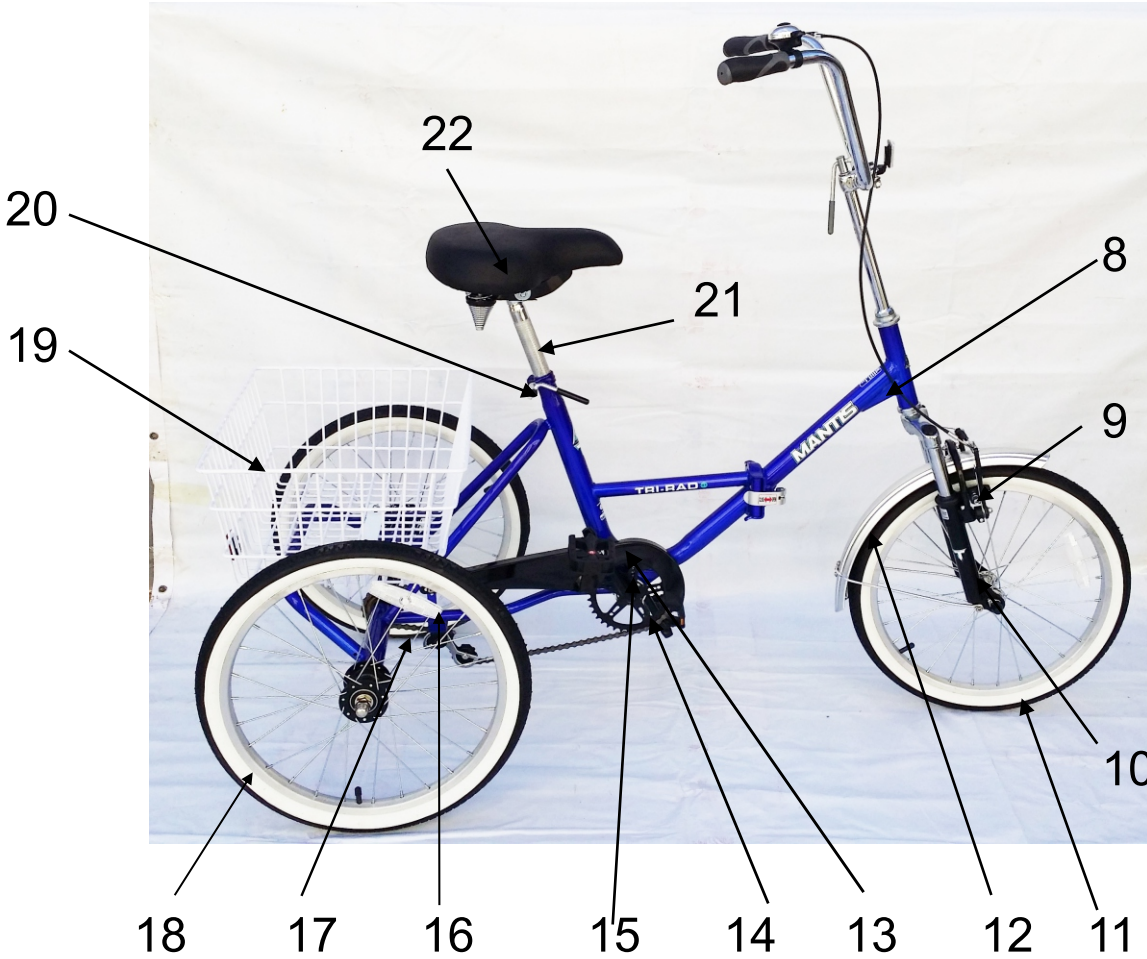
# C-GW7016Z Single SpeedH Assembling Manual

Worldwide Source For All Your Cycling Needs  
2105 SE 5<sup>th</sup> Street, Ames, IA 50010  
T: (515) 232-0277 F: (515) 232-0279  
Email: [info@cyclefg.com](mailto:info@cyclefg.com) Web: [www.cyclefg.com](http://www.cyclefg.com)



- 1.HANDLE BAR & GRIP
- 2.BRAKE LEVER
- 3.FRONT REFLECTOR
- 4.BELL
- 5.REAR REFLECTOR
- 6.TRANSMISSION AXIS
- 7.FREEWHEEL

- 8. FRAME
- 9.V-BRAKE
- 10.FRONT FORK
- 11.FRONT WHEEL SET
- 12.FRONT FENDER
- 13.PEDAL
- 14.CRANK SET
- 15.CHAIN & CHAIN COVER
- 16.WHEEL REFLECTOR
- 17.CHAIN TENSION GUIDED WHEEL
- 18.REAR WHEEL SET
- 19.BASKET
- 20.QUICK RELEASE
- 21.SEAT POST
- 22.SADDLE



- 18
- 17
- 16
- 15
- 14
- 13
- 12
- 11

# 1. FRONT AND REAR WHEELS ASSEMBLY

As(Figure 1), first lock front wheel mounted on the front fork with 15 # wrench, then mount the two rear wheels (left wheel active, right wheel fixed) to the frame's large shaft and tighten the nut with 19 # wrench.



Figure 1

## 2. FRONT FENDER ASSEMBLY

As (Figure 2), lock the front fender on the corresponding position of the front fork with the bolt and 10 # wrench as shown in the Figure 2.

M6X16 outer hexagon  
bolt & washer & jam nut

M6X10 outer hexagon  
bolt & washer

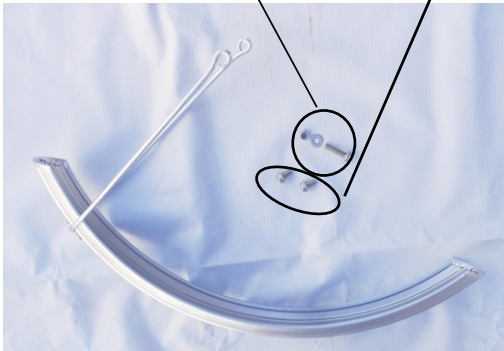
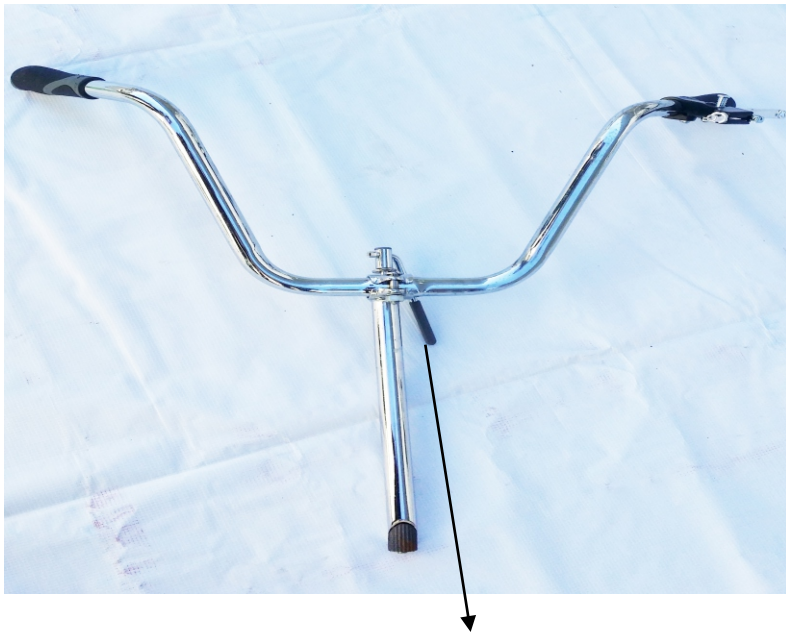


Figure 2

### 3. HANDLE BAR AND STEM

As (Figure 3), mount the handle bar and stem onto the frame. After adjust the height, lock it with quick release .(Note: The stem must be inserted into the fork head tube to at least the minimum insertion line.)



Quick release handle used to lock the stem



Figure 3

#### 4. FRONT BRAKE CABLE, FRONT REFLECTOR AND BELL ASSEMBLY

As figure 5,6 and 7, mount front brake cable, front reflector and bell respectively onto the corresponding position, then adjust the front brake cable to be flexible and reliable.



Figure 4



Figure 5 Front Brake Cable Assembly



Figure 6 Front Reflector Assembly



Figure 7 Bell Assembly



Figure 8

## 5. SEAT AND PEDAL ASSEMBLY

As (Figure 9), first insert the seat post into the saddle and lock it with locknut . Then insert the other end of the seat post into the frame's seat tube, and lock clamp. (Note: The safe line should not be exposed.)

There is a left and right pedal indicated by an "L" or "R" on the face of pedal. Do not install at the contrary side.

("L"-LEFT; "R"-RIGHT)

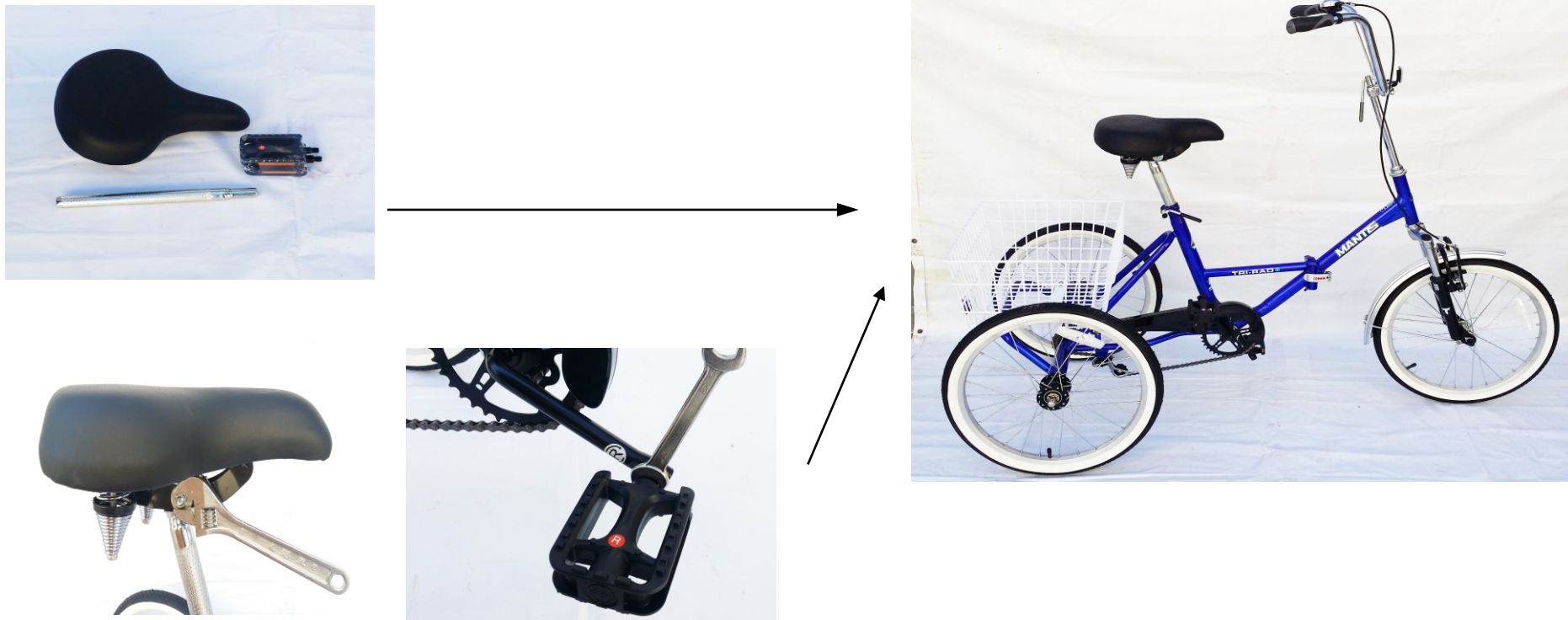


Figure 9

## 6. REAR REFLECTOR AND REAR BASKET ASSEMBLY

As (Figure 10), mount the rear reflector onto the corresponding position of the basket, and lock it with 8 # wrench. Then mount the whole basket onto the rear frame and lock it with M5X16 round head cross bolt.



M5X16 round head cross bolt & washer & cknut



Figure 10



## 7. WHEEL REFLECTOR AND THREAD END CAP ASSEMBLY

As (Figure 11), mount the 3 wheel reflectors onto the front and rear wheels with screwdriver . Finally, mount a thread end cap onto the end of front brake cable. The installation is completed.

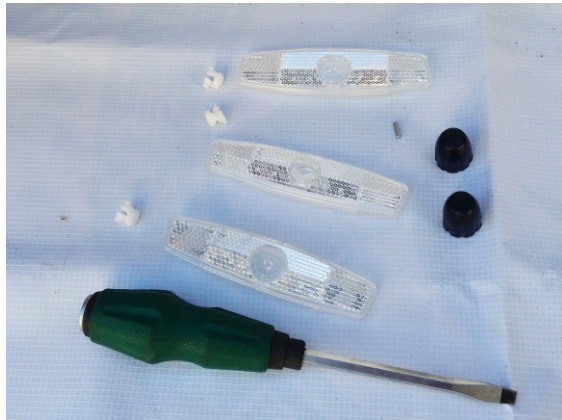


Figure 11