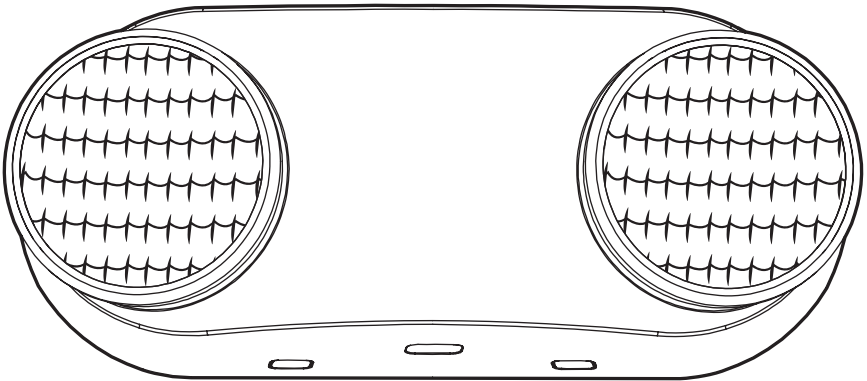


USE AND CARE GUIDE

LED OVAL EMERGENCY LIGHT



Questions, problems, missing parts? Before returning to the store,
call Commercial Electric Customer Service
8 a.m. - 7 p.m., EST, Monday - Friday, 9 a.m. - 6 p.m., EST, Saturday

1-877-527-0313

HOMEDEPOT.COM

THANK YOU

We appreciate the trust and confidence you have placed in Commercial Electric through the purchase of this emergency light. We strive to continually create quality products designed to enhance your home. Visit us online to see our full line of products available for your home improvement needs. Thank you for choosing Commercial Electric!

Table of Contents

Safety Information2
Warranty.....2
Pre-Installation.....3
Junction Box Installation5

Conduit Installation6
Maintenance7
Battery Replacement.....8
Troubleshooting8

Safety Information

IMPORTANT SAFEGUARDS. READ AND FOLLOW ALL SAFETY INSTRUCTIONS.

When using electrical equipment, basic safety precautions should always be followed including the following:

- Consult your local building code for approved wiring and installation guidelines.
- This product is for indoor use only.
- Do not mount this product near a gas or electric heater.
- This product should be mounted in a location and at a height where it will not be readily subjected to tampering by unauthorized personnel.
- The use of accessories is not recommended by the manufacturer, and may cause unsafe conditions.
- Do not use this product for anything other than its intended use.
- All service shall be performed by qualified service personnel. This product must be installed and maintained in accordance with the applicable installation codes by a person familiar with the construction operation of the product and the hazards involved.
- Maximum mounting height is 16.25 ft. (4.95 m) or the equivalent.



WARNING: Before beginning installation, turn off electricity by removing the fuse or turning off the circuit breaker.



WARNING: Disconnect power before servicing the product. All service should be performed by a qualified electrician.



WARNING: Changes or modifications to this unit not expressly approved by the party responsible for compliance could void the user's authority to operate the equipment.

NOTICE: This equipment has been tested and found to comply with the limits for a Class B digital device, pursuant to Part 15 of the FCC Rules. These limits are designed to provide reasonable protection against harmful interference in a residential installation. This equipment generates, uses and can radiate radio frequency energy and, if not installed and used in accordance with the instructions, may cause harmful interference to radio communications. However, there is no guarantee that interference will not occur in a particular installation. If this equipment does cause harmful interference to radio or television reception, which can be determined by turning the equipment off and on, the user is encouraged to try to correct the interference by one or more of the following measures:

- Reorient or relocate the receiving antenna.
- Increase the separation between the equipment and receiver.
- Connect the equipment into an outlet on a circuit different from that to which the receiver is connected.
- Consult the dealer or an experienced radio/TV technician for help.

SAVE THESE INSTRUCTIONS

Warranty

WHAT IS COVERED

The manufacturer warrants this lighting fixture to be free from defects in materials and workmanship for a period of five (5) years, and five (5) years for the battery, from date of purchase. This warranty applies only to the original consumer purchaser and only to products used in normal use and service. If this product is found to be defective, the manufacturer's only obligation, and your exclusive remedy, is the repair or replacement of the product at the manufacturer's discretion, provided that the product has not been damaged through misuse, abuse, accident, modifications, alterations, neglect, or mishandling.

WHAT IS NOT COVERED

This warranty shall not apply to any product that is found to have been improperly installed, set-up, or used in any way not in accordance with the instructions supplied with the product. This warranty shall not apply to a failure of the product as a result of an accident, misuse, abuse negligence, alteration, faulty installation, or any other failure not relating to faulty material or workmanship. This warranty shall not apply to the finish on any portion of the product, such as surface and/or weathering, as this is considered normal wear and tear.

The manufacturer does not warrant and specifically disclaims any warranty, whether express or implied, of fitness for a particular purpose, other than the warranty contained herein. The manufacturer specifically disclaims and liability and shall not be liable for any consequential or incidental loss or damage, including but not limited to any labor / expense costs involved in the replacement or repair of said product.

Contact the Customer Service Team at 1-877-527-0313 or visit www.HomeDepot.com.

Pre-Installation

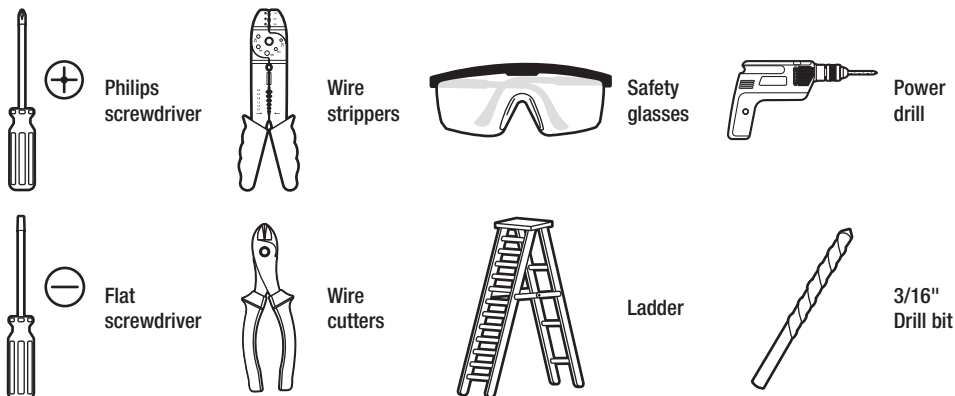
PLANNING INSTALLATION

Before beginning assembly, installation, or operation of the product, make sure all parts are present. Compare parts with the package contents list. If any part is missing or damaged, do not attempt to assemble, install, or operate the product. Contact customer service for replacement parts.



NOTE: Keep your receipt and these instructions for proof of purchase.

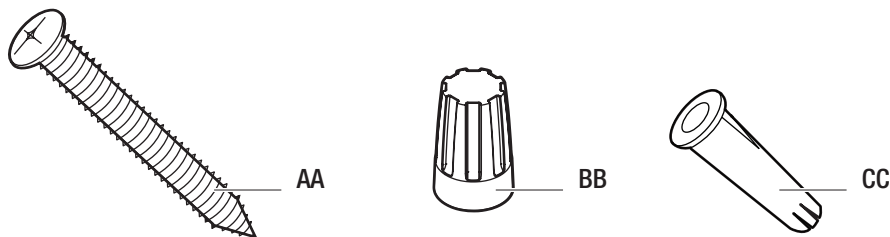
TOOLS REQUIRED



HARDWARE INCLUDED



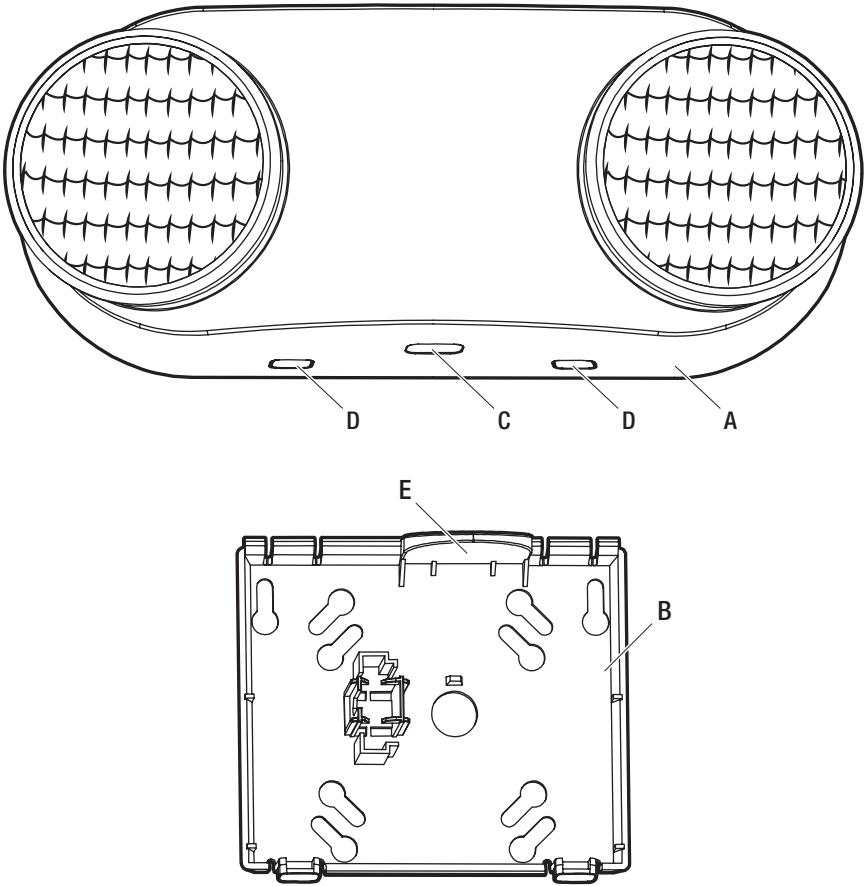
NOTE: Hardware not shown to actual size.



Part	Description	Quantity
AA	Screw	2
BB	Wire nut	3
CC	Wall anchor	2

Pre-Installation (continued)

PACKAGE CONTENTS

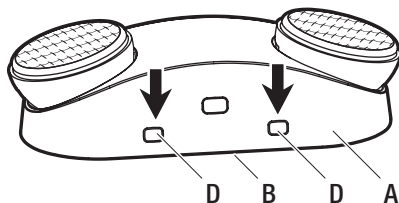


Part	Description	Quantity
A	Housing	1
B	Backplate	1
C	Test switch	1
D	Locking tab	2
E	Conduit flange	1

Pre-Installation (continued)

1 Removing the backplate from the housing

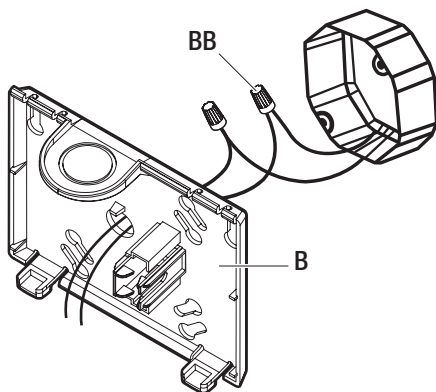
- While holding the backplate (B), press the locking tabs (D) and gently separate the backplate (B) from the housing (A).



Junction Box Installation

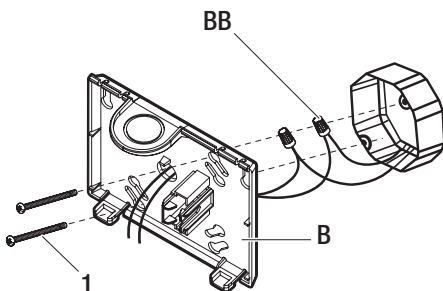
1 Wiring the fixture

- Feed the fixture wires through the backplate (B) and connect them to the power supply using the wire nuts (BB).
- For 120 V applications, use the black and white wires. Connect the black supply wire to the black fixture wire. Connect the white supply wire to the white fixture wire.
- For 277 V applications, use the red and white wires. Connect the red supply wire to the red fixture wire. Connect the white supply wire to the white fixture wire.
- Cap unused wires using provided wire nut (BB).



2 Mounting the fixture

- Attach the backplate (B) to the junction box using the junction box screws (not included) (1).



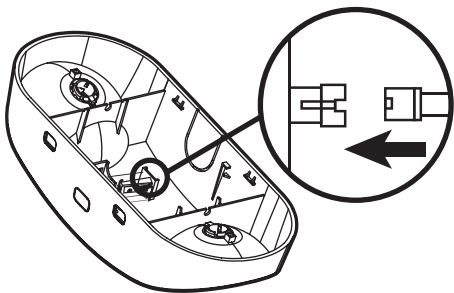
Junction Box Installation (continued)

3 Connecting the back-up battery

- Connect the PCB board connector to the battery connector.

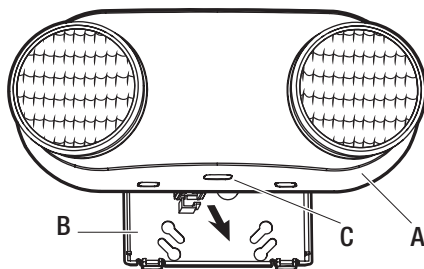


NOTE: The battery will take 24 hours to fully charge.



4 Assembling the fixture

- Align the locking tabs and push the housing (A) directly onto the backplate (B).
- Restore power to the fixture. The Test switch (C) should illuminate.



Conduit Installation

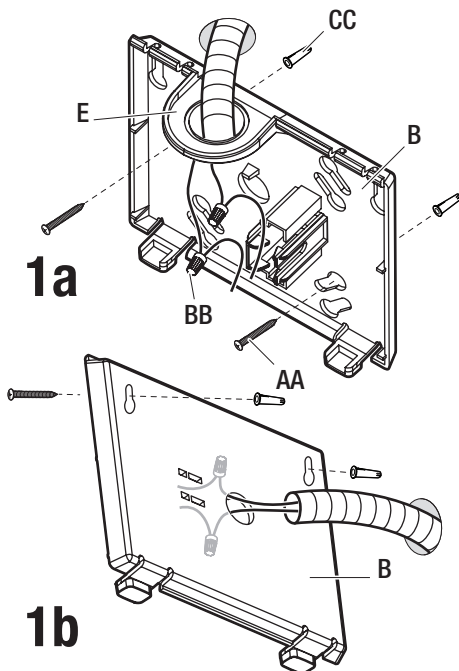
1 Mounting and wiring the fixture



WARNING: USE FLEXIBLE CONDUIT ONLY

This product must be installed in accordance with the applicable building codes, electric codes, and ordinances. Be sure to comply with your local and state regulations. It is recommended that this product be installed by a licensed electrician or by qualified service personnel.

- Route the wires through the hole in the conduit flange (1a) or through the rear of the backplate (B) (1b) and make the conduit connection in accordance with code requirements.
- For 120 V applications, use the black and white wires. Connect the black supply wire to the black fixture wire. Connect the white supply wire to the white fixture wire.
- For 277 V applications, use the red and white wires. Connect the red supply wire to the red fixture wire. Connect the white supply wire to the white fixture wire.
- Using the backplate (B) as a template, mark and drill two installation holes on the wall at the desired installation location.
- Insert wall anchors (CC) into the holes.
- Attach the backplate (B) to the wall by inserting screws (AA) through the backplate (B) and into the wall anchors (CC).



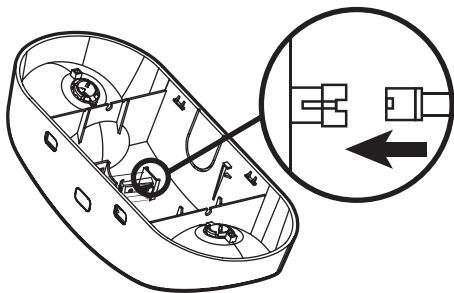
Conduit Installation (continued)

2 Connecting the back-up battery

- Connect the PCB board connector to the battery connector.

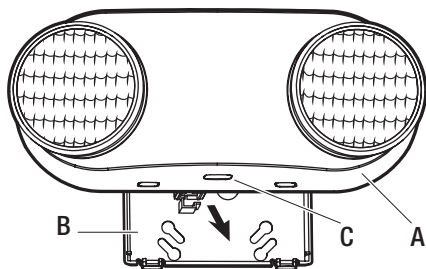


NOTE: The battery will take 24 hours to fully charge.



3 Assembling the fixture

- Align the locking tabs and push the housing (A) directly onto the backplate (B).
- Restore power to the fixture. The Test switch (C) should illuminate.



Maintenance



NOTE: National Electric Code (NEC) and NFPA life safety code regulations require that routine tests need to be performed.

- Allow the battery to charge at least 24 hours before testing.
- To test the fixture, press the TEST button. The LED lamps should turn on.
- Test the fixture regularly.



CAUTION: Always turn off AC power to the fixture before servicing. Service should be performed only by qualified personnel.

TESTING THE BATTERY

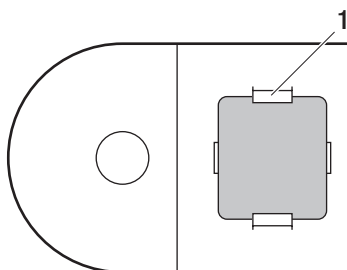
Test the unit's battery once per month. Additionally, every 12 months, a full 90-minute test should be performed. While disconnected from the main power supply, the unit should illuminate for a minimum of 90 minutes on battery back up power.

Battery Replacement

This fixture uses a Ni-Cd Rechargeable AA700 mAh 3.6 V battery.

To remove the battery:

- Bend the battery catches away from the battery and remove the battery from the housing.
- Disconnect the battery leads from the board terminal.
- Connect the new battery to the board terminal.
- Place the new battery in the battery location and ensure it is seated behind the battery catches (1).



Troubleshooting

Problem	Possible Cause	Solution
The LED charge indicator does not illuminate.	AC power supply is off.	Ensure the unit has AC power supply. Restore the power at the breaker/fuse box.
	The unit is incorrectly wired.	Ensure the unit is wired correctly.
	The battery isn't connected.	Ensure the battery is connected.
The LED emergency heads do not illuminate.	The battery is discharged.	Verify the unit is properly wired and connected to an AC power source. Allow the unit to charge for 24 hours and then re-test.
	The battery isn't connected.	Ensure the battery is connected.

If the above troubleshooting does not resolve the issue, contact a qualified electrician, or call Commercial Electric customer service at 1-877-527-0313.



Questions, problems, missing parts? Before returning to the store,
call Commercial Electric Customer Service
8 a.m. - 7 p.m., EST, Monday-Friday, 9 a.m. - 6 p.m., EST, Saturday

1-877-527-0313

HOMEDEPOT.COM

Retain this manual for future use.