

# IMPORTANT INSTRUCTIONS

## OPERATING MANUAL

7 FIN OIL FILLED RADIATOR

Model No.: CY83RR-7

## READ AND SAVE THESE INSTRUCTIONS

READ CAREFULLY BEFORE ATTEMPTING TO ASSEMBLE, INSTALL, OPERATE OR  
MAINTAIN THE PRODUCT DESCRIBED  
PROTECT YOURSELF AND OTHERS BY OBSERVING ALL SAFETY INFORMATION  
FAILURE TO COMPLY WITH INSTRUCTIONS COULD RESULT IN PERSONAL INJURY  
AND/OR PROPERTY DAMAGE

**RETAIN INSTRUCTIONS FOR FUTURE REFERENCE.**

## IMPORTANT INSTRUCTIONS

**When using this appliance, basic precautions should always be followed to reduce the risk of fire, electric shock and injury to persons, including the following:**

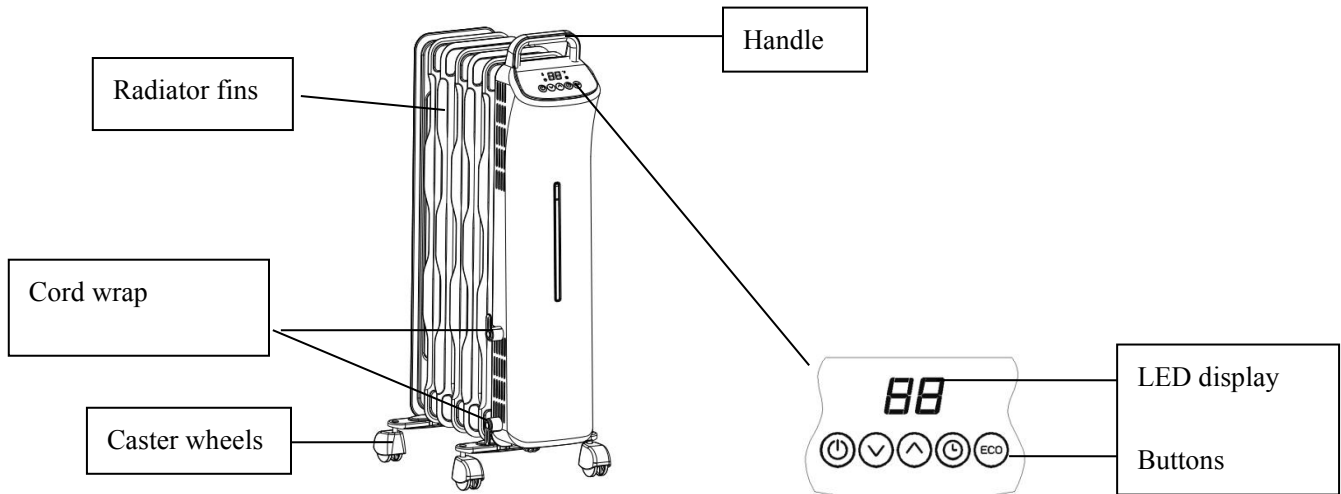
**CAUTION-** High temperature, keep electrical cords, drapery, and other furnishings at least 3 feet (0.9m) from the front of the heater and away from the side and rear.

1. Read all instructions before using the heater.
2. Remove the unit from its packaging and check to make sure it is in good condition before using.
3. Do not let children play with parts of the packing (such as plastic bags).
4. Check the household voltage to ensure it matches the heater's rated specification.
5. Check the power cord and plug carefully before use to make sure that they are not damaged.
6. Before unplugging the power cord, be sure to turn off the power. When touching the unit, be sure your hands are dry to prevent from receiving an electric shock.
7. Do not use near to, or point the heater to, furniture, curtains, or other inflammable objects. Keep combustible materials, such as furniture pillows, bedding, papers, clothes, and curtains at least 3 feet (0.9m) from the front of the heater and keep them away from the sides and rear.
8. Do not block air intakes or exhaust in any manner to prevent a possible fire.
9. Extreme caution is necessary when any heater is used by, or near children or invalids, and whenever the heater is left operating and unattended.
10. Always unplug the heater when not in use.
11. Prevent water from getting into the housing of the heater during operation or in storage. Always store in a dry area free from potential moisture.

12. Do not use in places where gasoline, paint, or other inflammable liquids are used or stored.
13. This heater is not intended for use in bathrooms, laundry areas, or similar indoor locations. Never locate the heater where it may fall into a bath tub or other body of water.
14. Do not run the cord under carpeting. Do not cover the cord with throw rugs, runners, or the like. Arrange the cord away from traffic areas and where it will not be tripped over.
15. Do not use on soft surfaces, like a bed, where openings may become blocked.
16. Do not operate any heater with a damaged cord, damaged plug, after the heater malfunctions, or if it has been dropped or damaged in any manner. Return the heater to an authorized service facility for examination, electrical or mechanical adjustment, or repair.
17. Do not insert or allow foreign objects to enter any ventilation or exhaust opening as this may cause an electric shock fire, or damage the heater.
18. This heater is hot when in use. To avoid burns, do not let bare skin touch the hot surfaces. If provided, use handles when moving this heater.
19. Use this heater only as described in this manual. Any other uses not recommended by the manufacturer may cause fire, electric shock, or personal injury and may void the warranty.
20. Always plug heater directly into a wall outlet/receptacle. Never use with an extension cord or relocatable power tap (outlet/power strip)
21. Do not use outdoors.
22. To disconnect heater, turn controls to off, then remove plug from outlet.
23. **WARNING: RISK OF FIRE** Keep combustible material such as furniture, paper, clothes, and curtains at least 3 feet (0.9m) from the front of the heater and keep them away from the side and rear when the heater is plugged in.
24. Do not place any objects such as furniture, papers, clothes, and curtains closer than 3 feet to the front of the heater and keep them away from the sides and rear when the heater is plugged in.
25. Do not place the heater near a bed because objects such as pillows or blankets can fall off the bed and be ignited by the heater.
26. Never clean this heater while it is plugged in. Do not immerse in water. To disconnect, turn control to OFF, then remove the plug from the outlet by grasping it and pulling it from the outlet. Never yank on the cord.
27. This appliance is not intended for use by persons (including children) with reduced physical, sensory or mental capabilities, or lack of experience and knowledge, unless they have been given supervision or instruction concerning use of the appliance by a person responsible for their safety.
28. Children should be supervised to ensure that they do not play with the appliance
29. Do not use with wireless plug adapter or outlet that allows control remotely

# SAVE THESE INSTRUCTIONS

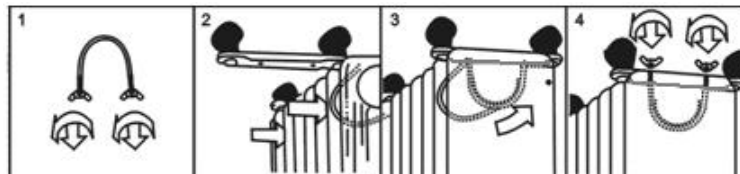
## STRUCTURE AND PARTS



## ASSEMBLY INSTRUCTIONS

The heater is packaged with the caster wheels unattached. You must attach them before operating the heater.

**WARNING: Do not operate without caster wheels attached. Only operate the heater only in upright position (wheels on the bottom, controls on the top), any other position could create a hazardous situation.**



1. Place the radiator body upside-down on a scratch-free location, make sure it is stable and will not fall.
2. Screw off the wing nuts from the U-shaped bolt provided, attach the U-shaped bolt to the U-facing flange between first and second fins(near the front cover).
3. To attach the castor mounting plate to the radiator body, you should insert the threaded ends of the U bolt in the holes on the castor mounting plate.
4. Screw the wing nuts back to the U bolt and fasten the wing nut properly.

**Note: do not over tighten, which may cause the damage of radiator flange.**

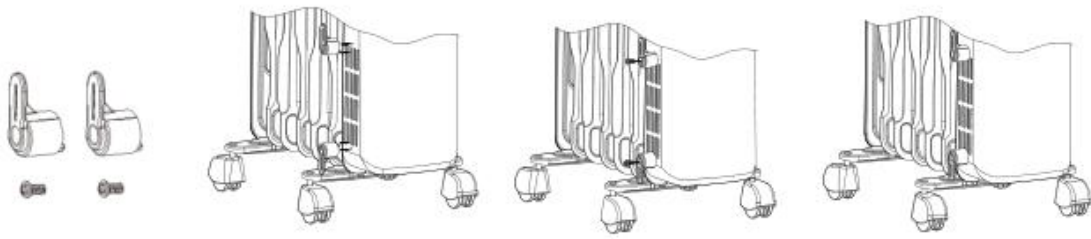
5. Repeat 2, 3, and 4 on the rear of radiator for mounting of the rear Castors.

**Note: the rear castors must be mounted between the end two fins.**

### Cord wrap assembly

6. Turn the radiator body in the up direction, take out the two cord wrap mounts and two screws.
7. Put the two cord wrap mounts as shown in the below photo, and attach with the included screws.

**Note: The function of cord wrap is to store the power cord. It will not affect the function of the radiator, if you decide not to install the cord wrap.**




## INSTRUCTIONS FOR USE

1. Before using the heater make sure that it is on a flat and stable surface. Damage may occur if it is placed on an incline or decline.

2.  ON/OFF/SETTING

With the heater plugged into an electrical outlet, the display will show "OF". Press the power button once to turn on the radiator, to highest power setting, showing "HI" on the display. The LED play may blink, and after three seconds, it shows the environment temperature. Note that the heater measures the environmental temperature around the heater and may not give accurate temperature readings for different parts of the room.

Press the  again, the heater will reduce power to the lowest setting, and showing "LO" on the display.



Press the  to turn off the radiator, and the display will show "OF"

3.  Or  UP or DOWN

When the radiator is on, press  or  to adjust the temperature setting. And




the indicator  will turn on.

Press it once, the temperature will increase or decrease one degree. After three seconds, the display will show the environment temperature.

Keep pressing  or  to set the temperature quickly.

The temperature setting range is from 40-80 °F

#### 4. TIMER

When the radiator is on, press  to set timer and the indicator  light will turn on. Keep pressing  and the LED display shows time setting, 1-2-3-4-5-.....-23-24-00. After set the timer, it will count down, and the radiator will turn off after the setting timer expires. After three seconds, it shows the environment temperature.

#### 5. ECO

When the radiator is on, press ECO to working as ECO function.  
When the room temperature is below 65°F, the radiator working as high power setting.  
When the room temperature is 65-75°F, the radiator working as middle power setting.  
When the room temperature is above 75°F, the radiator working as low power setting.

## SAFETY FEATURES

This product has protection safeguards that turn off the product when parts become excessively hot or if it tips over. If the product turns off, immediately set the display to the "OF" position and unplug it from the electric outlet.

### **If tipped over:**

Place the product on a flat, level, stable surface in order to prevent the product from tipping over again. The product will resume operation once it has been placed in a safe operating position.

TIP: Always install and maintain at least one smoke detector in good operating condition on each floor of your home. Periodically check and/or replace the battery in your smoke detector with a new battery.

## TROUBLE SHOOTING TIPS

If your heater shuts off unexpectedly or fails to operate, one of the above-mentioned safety features may have activated to prevent overheating.

1. Be sure the power cord is plugged into a working electrical outlet.
2. Check your thermostat setting. The heater may be off because it has reached the desired temperature setting.
3. Check to make sure your outlet has power. The heater may have overloaded your circuit and cause a breaker to trip or fuse to blow.

4. Reset the heater by turning the display to “OF” and unplugging the heater for 15 minutes or until cool. Make sure the heater is on a flat and stable surface and plug the heater into an electrical outlet. Turn the heater on with the power button.

## **MAINTENANCE**

**WARNING: ALWAYS UNPLUG THE CORD BEFORE MOVING OR SERVICING. DO NOT IMMERSE HEATER IN WATER!**

**WARNING: In case of malfunction or doubt, do not try to repair the radiator yourself. It may result in a fire hazard or electric shock.**

**CLEANING:** IMPORTANT! DO NOT IMMERSE HEATER IN WATER! Clear the heater grills with the vacuum brush attachment on your vacuum cleaner. This will remove lint and dirt from the inside of the heater. DO NOT ATTEMPT TO TAKE HEATER APART. Clean the body of heater with a soft cloth.

**CAUTION: Do not use gasoline, benzine, thinner, harsh cleaners, etc. as they will damage the heater. NEVER USE ALCOHOL OR SOLVENTS.**

**STORAGE:** Wrap the cable around the cord wrap, and store the heater with these instructions in a cool, dry place.