

Olympia Water Systems™ Reverse Osmosis Fridge/Ice-maker Kit Installation Instructions

Before installation, if your refrigerator has a filter, we recommend that this filter is removed as it is not needed. Please note that some refrigerators require a by-pass plug be installed in place of the filter (the by-pass plug is usually supplied with your refrigerator). **See Fig. 1** for ice-maker kit tubing connection example.

1. Turn cold water supply and tank ball valve to OFF positions. Turn system faucet to the ON position to release any built up pressure in the system. Once pressure has been released, turn system faucet to OFF position.
2. Cut the BLUE tubing between the system faucet and the Stage 5 filter. Insert both of the free ends of the BLUE tubing into the tee fitting. Attach included blue tubing lock clip to secure tubing in the tee fitting.
3. Measure and cut a 6" piece from one end of the included WHITE tubing and insert one end into the remaining side of the tee fitting. Insert the other end of this piece into one side of the included shut-off ball valve. Attach included blue tubing lock clips to secure tubing in the tee fitting and shut-off ball valve.
4. Insert one free end of the remaining included WHITE tubing into the other side of the ball valve. Attach included blue locking clip to secure tubing in shut-off ball valve.
5. Run the remaining end of the WHITE tubing to the back of the refrigerator. Install the remaining end of the WHITE tubing onto the refrigerator water valve using the included compression nut, collar and insert. **See Fig. 2.** Tighten compression nut onto the water valve with a wrench.
6. Turn shut-off ball valve, cold water supply and tank ball valve to the ON positions. Check for leaks.

NOTE: For system maintenance (filter changes) or troubleshooting, turn the shut-off ball valve to the OFF position. This will isolate the water flow to the system/tank only. After completing any filter changes and flushing procedures, the shut-off ball valve can be turned back to the ON position.

Fig. 1

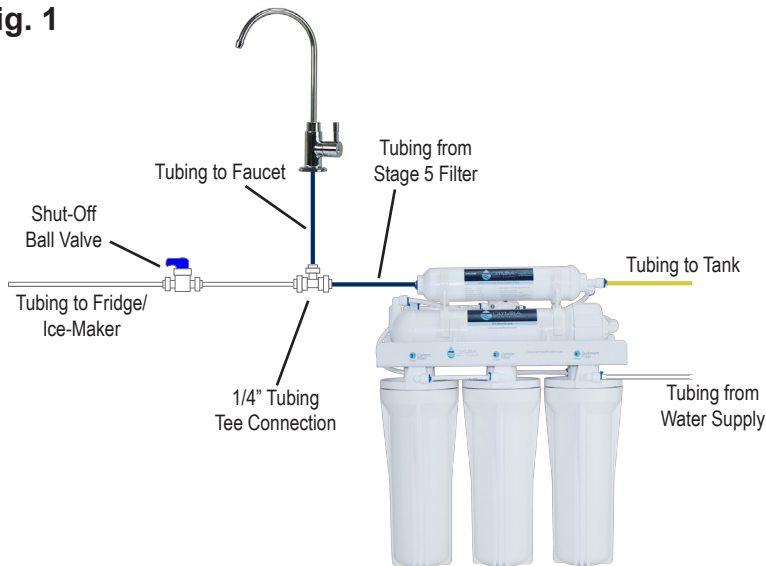
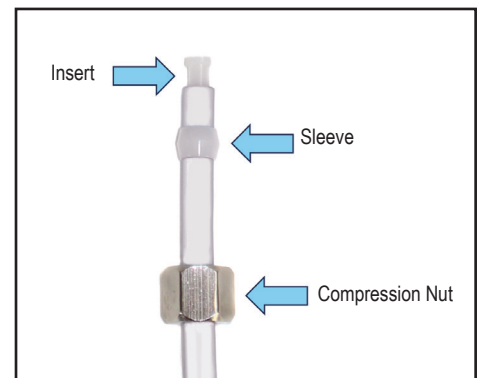
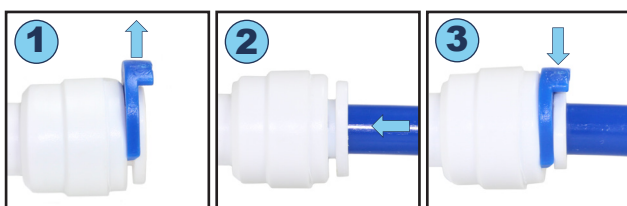


Fig. 2

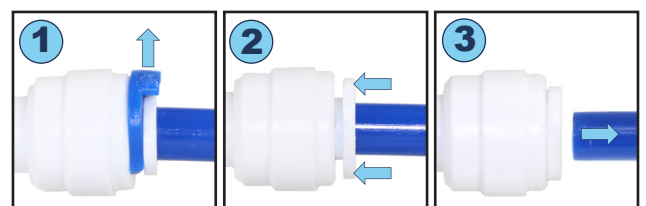


How to Use Quick Connect Fittings



To Attach Tubing

Remove BLUE tubing lock clip. Insert tubing until it hits the backstop. Pull on inserted tubing to ensure it is secured and re-attach BLUE tubing lock clip.



To Release Tubing

Remove BLUE tubing lock clip. Use two fingers to push in collet to release tubing. While collet is being held, pull tubing straight out.