

# **OVENTE®**

## **7.0" Dual-Sided Wall Mount Mirror MNLFW70 Series**

Before using, please read the instruction manual and keep it for future use.



## IMPORTANT SAFEGUARDS

When using your mirror, basic safety precautions should always be followed, including the following:

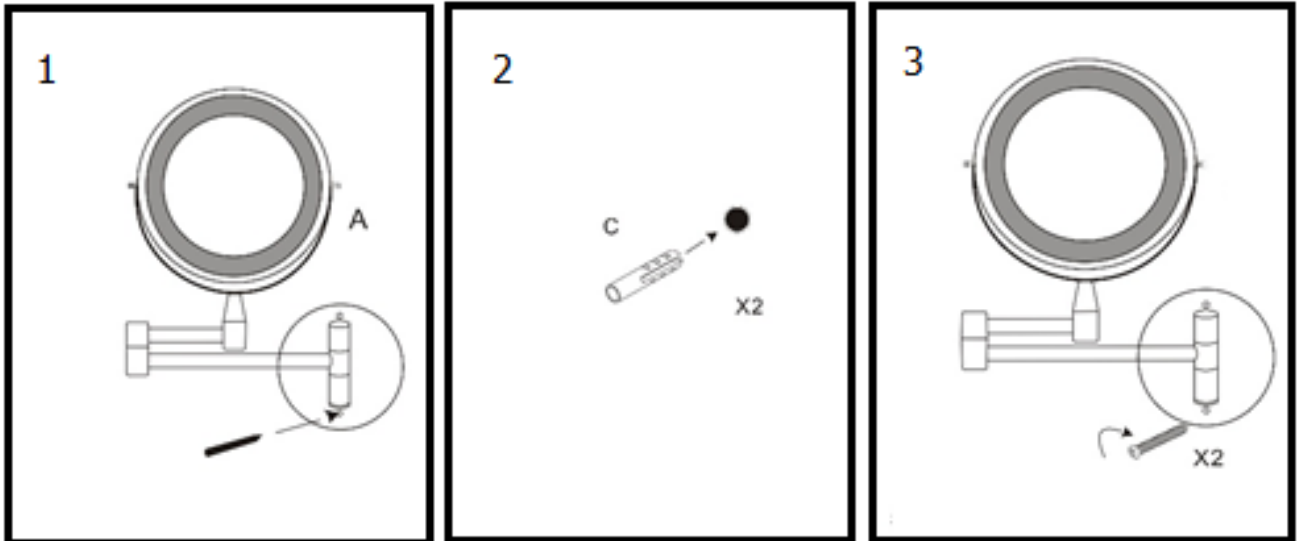
---

- Read all instructions carefully before use.
- Provide close supervision when mirror is being used near children.
- Never operate mirror if it is not working properly, has been dropped, damaged, or submersed in water.
- Do not use outdoors.
- Do not disassemble the mirror. Do not attempt to remove, alter or replace the permanent LED light.
- Never operate where aerosol (spray) products are being used, or where oxygen is administered.
- Be sure mirror is not in a position where it can reflect sunlight. Reflected sunlight can cause fire.
- Always switch the mirror OFF after use and unplug before storing.

## INSTALLATION

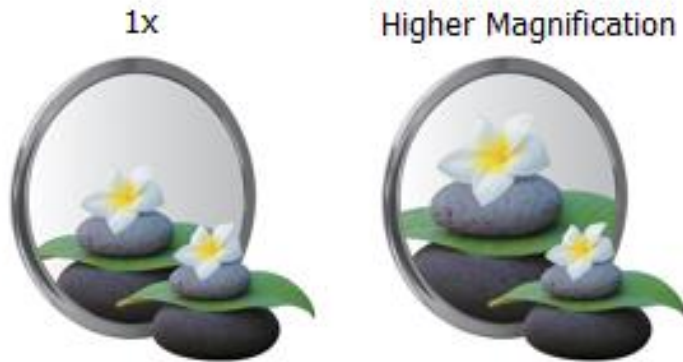
---

1. Position the mirror on the wall and mark the screw location.
2. Drill two pilot holes and push the plastic anchors into the wall.
3. Screw the rail into the wall and do not over-tighten.



**NOTE:** 2 screws and 2 anchors are needed to install the mirror on the wall.

## MAGNIFICATION EFFECT



**NOTE:** When you are further from the mirror, the image is inverted. As you get closer, the image flips to the actual virtual image in magnification standard. This is because of the concave lens of the higher magnification.



## MIRROR MAINTENANCE

1. Use a soft wet cloth to remove dirt and stains. Wipe with dry cloth afterwards. (Cloth not included).
2. To protect the mirror from dust simply store it in its original box. Store out of reach of children in a safe dry location.



# WARRANTY

## LIMITED ONE (1) YEAR WARRANTY

We aim to make your life easier by producing top-quality housewares, designed with you in mind. We have pledged to uphold all our offerings to the highest standards, with one- (1) year warranty from the date of purchase from authorized retailer.

## LIMITATIONS

The warranty stated above is the only warranty applicable to this product. Other expressed or implied warranties are hereby disclaimed. No verbal or written information given by the Manufacturer, its agents or employees shall create a guarantee or in any way increase the scope and duration of this warranty. Repair or replacement as provided under this warranty is the exclusive remedy of the consumer. This warranty covers defects in workmanship and materials. It does not include damage due to abuse, misuse, commercial use, accidents or natural wear and tear. In case of replacement, shipping and handling fee may apply. The manufacturer shall not be liable for incidental or consequential damages resulting from the use of this product. Any implied warranty of merchantability or fitness for a particular purpose on this product is limited to the applicable warranty period set forth above except to the extent prohibited by law. Proof of purchase may be required to validate the order. Promotional items may not be covered under any warranty. Consumer rights may vary from state to state.

**Customer Support: 855.926.2626**

**Visit us at [ovente.com](http://ovente.com)**



[Facebook.com/ovente](https://www.facebook.com/ovente)



[@OventeTweets](https://twitter.com/OventeTweets)



[@Ovente](https://www.instagram.com/Ovente)



[youtube.com/ovente](https://www.youtube.com/ovente)