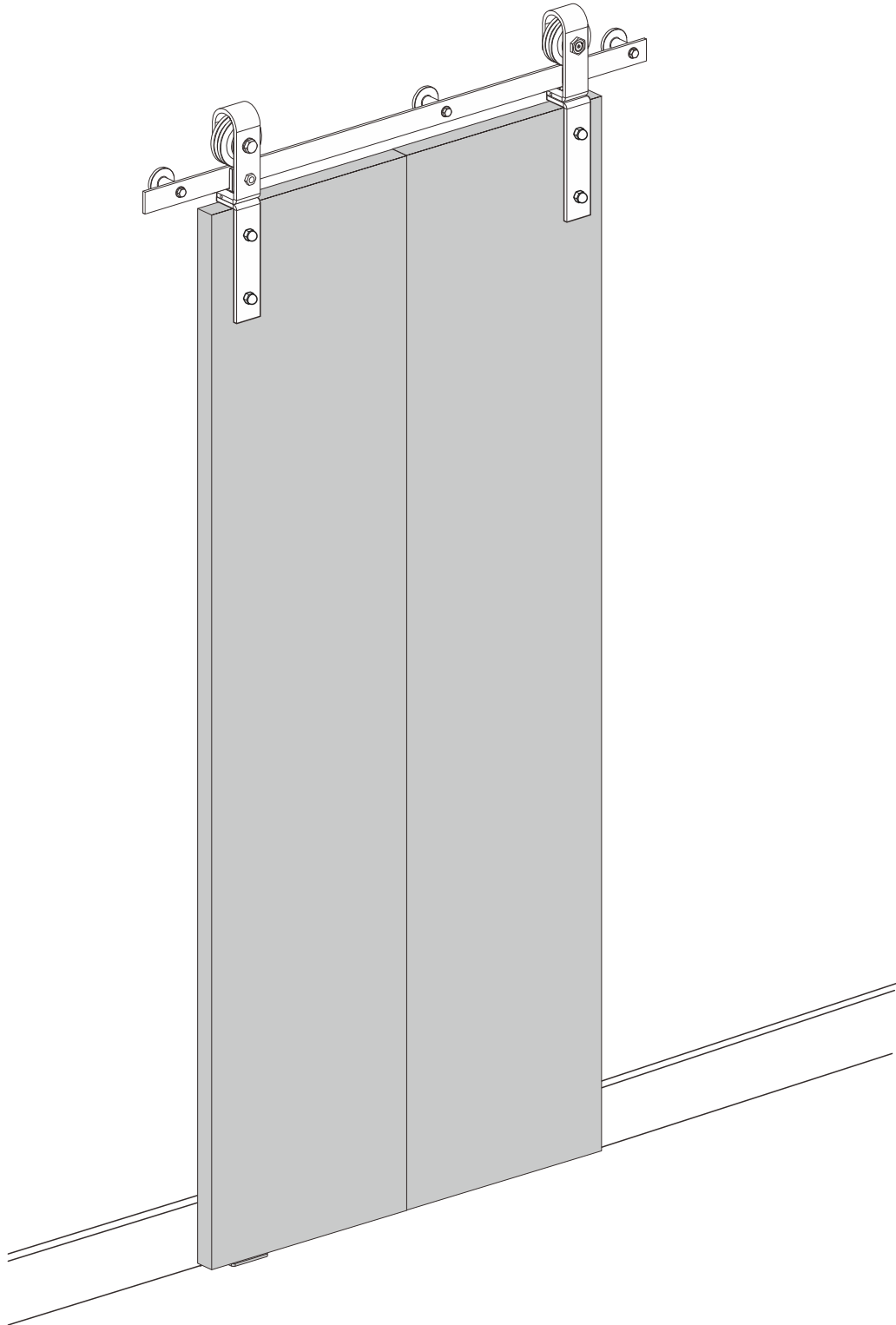
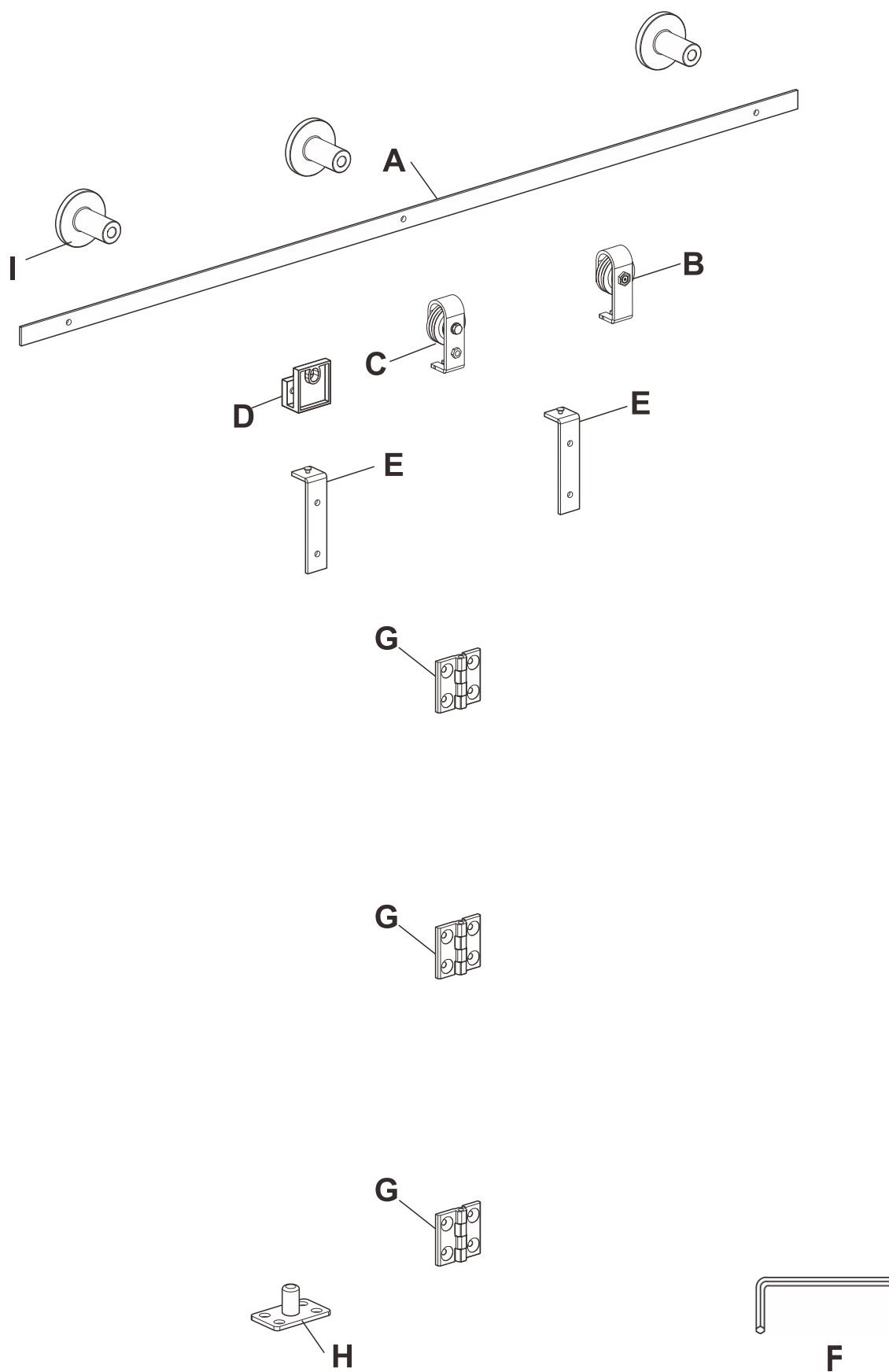


Installation Manual

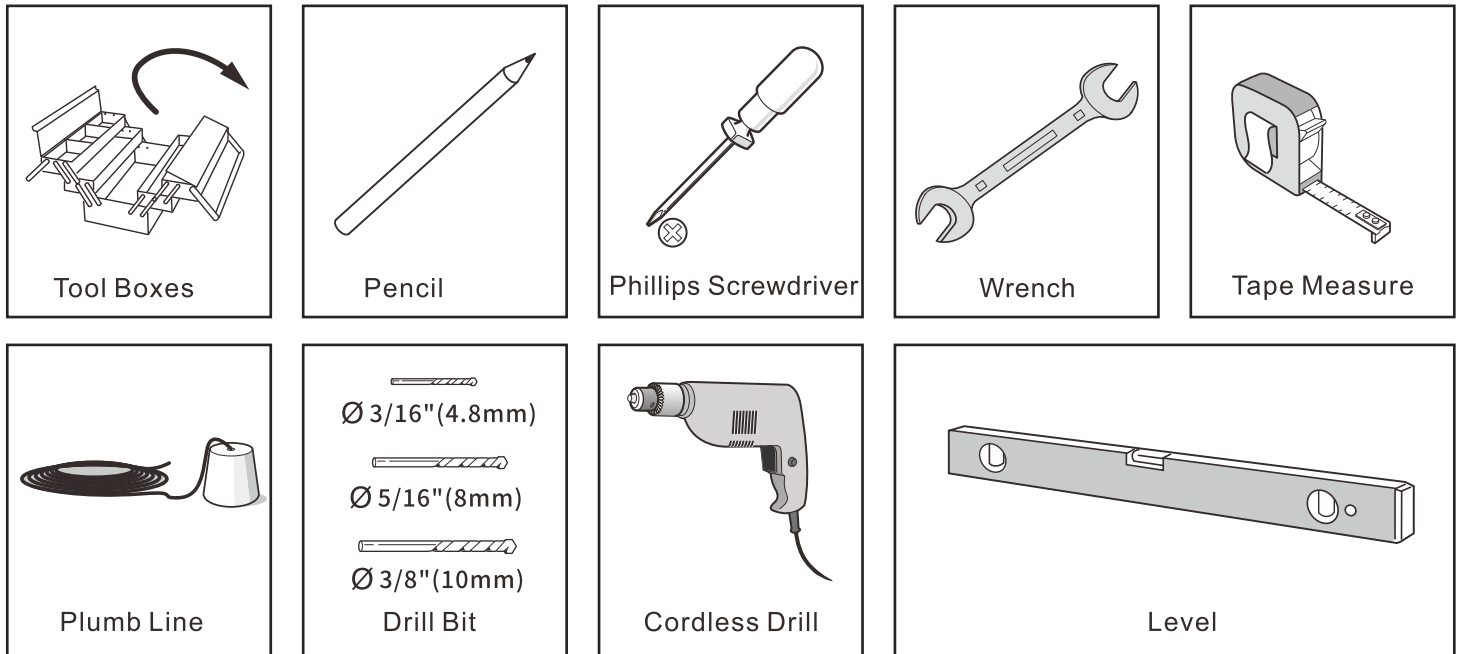


Components list

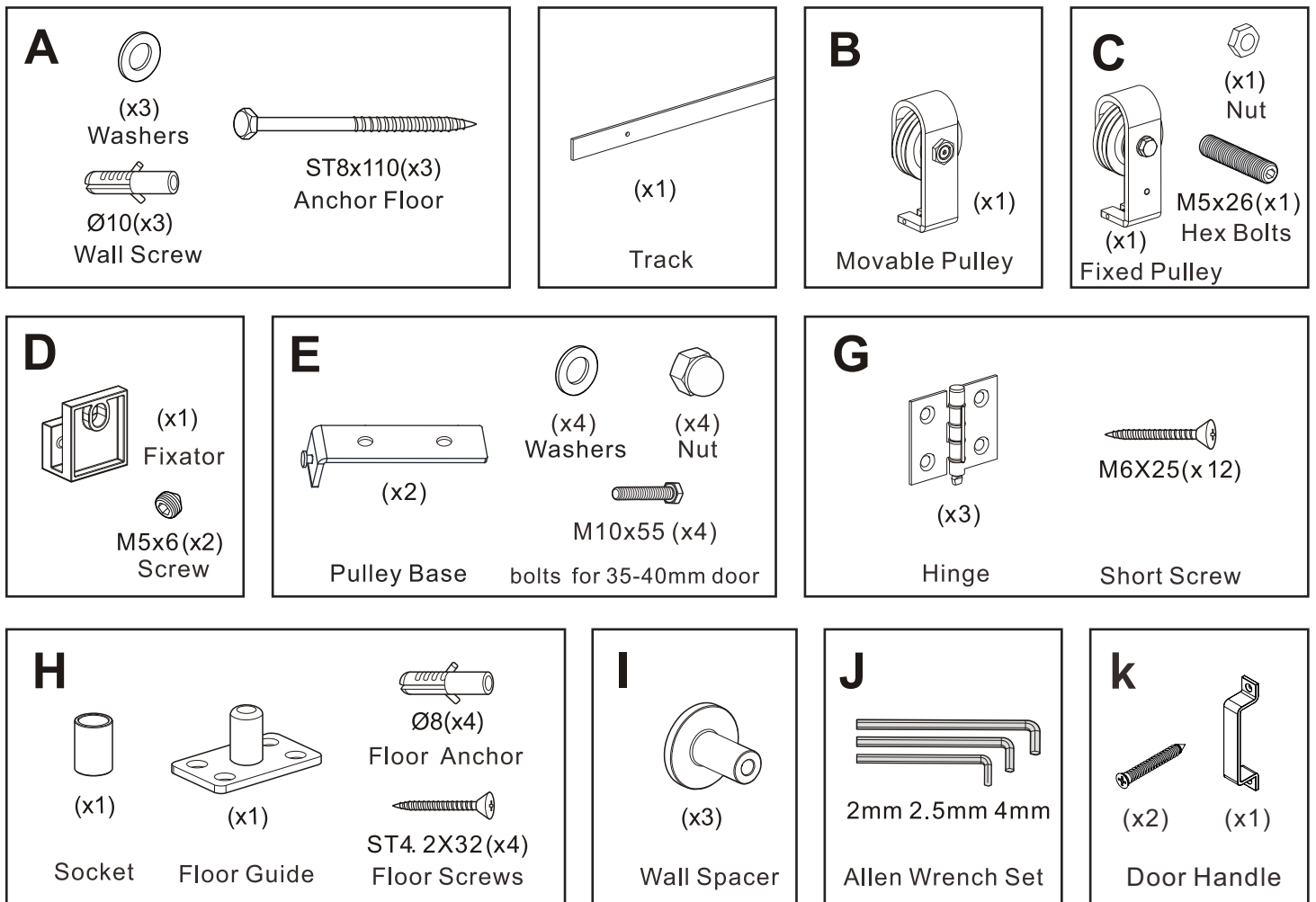


Pre-installation

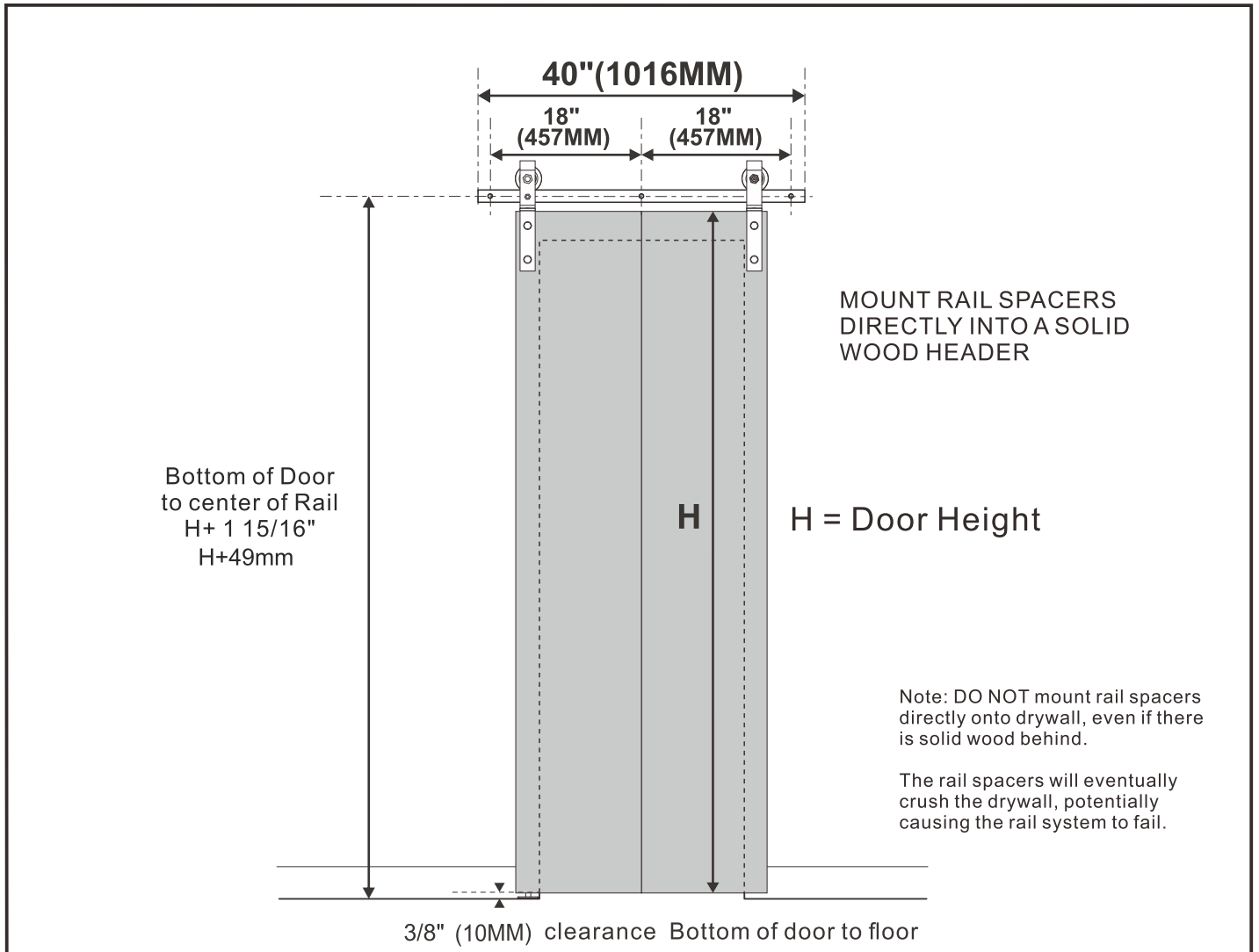
TOOLS REQUIRED



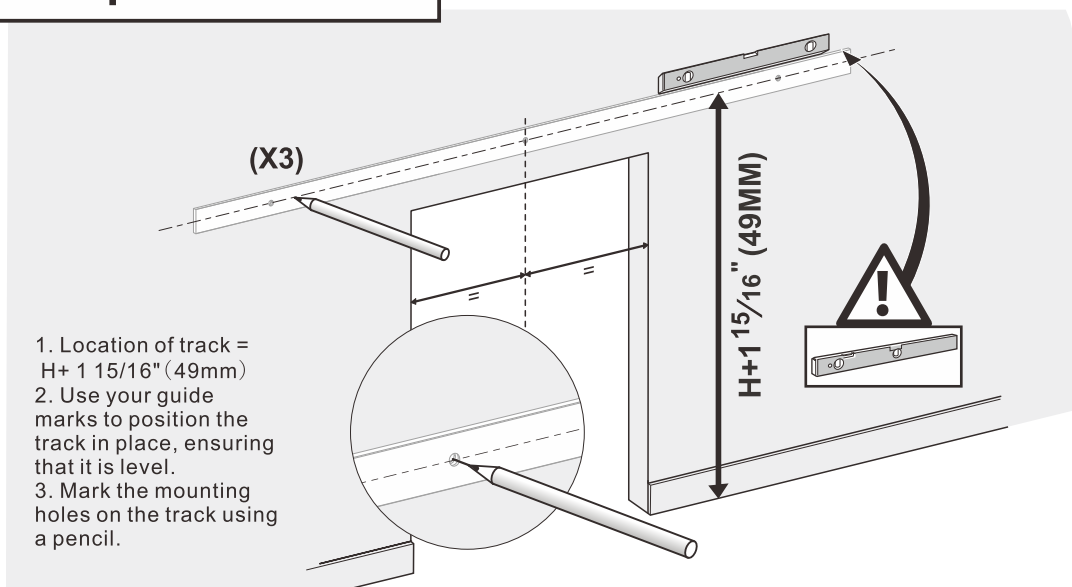
HARDWARE INCLUDED



Installation

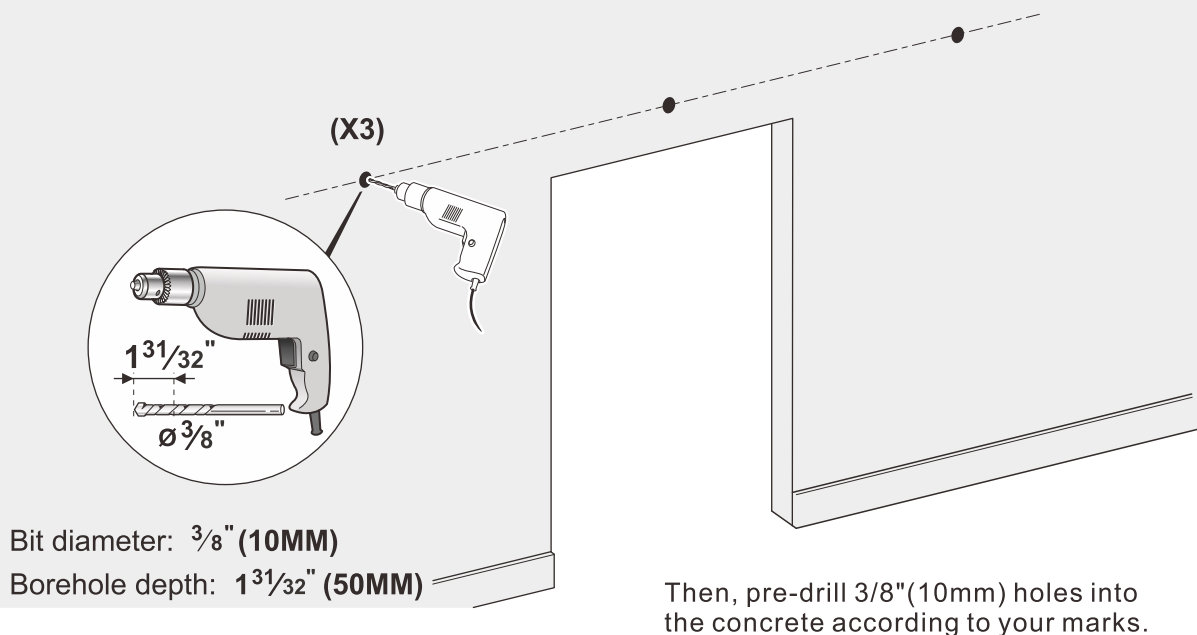


1 Locate spacer holes

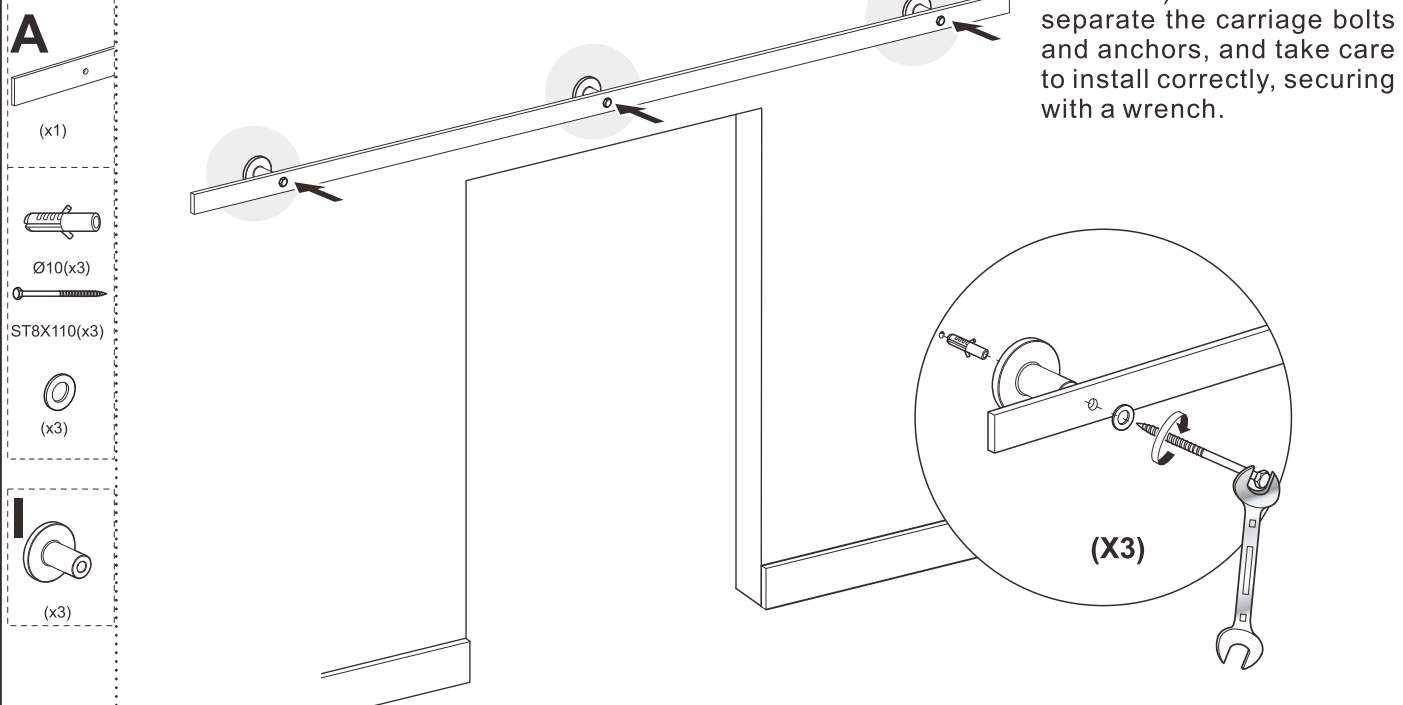


Installation

2 Drill holes

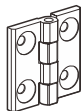


3 Install Track



4 Install hinges

G



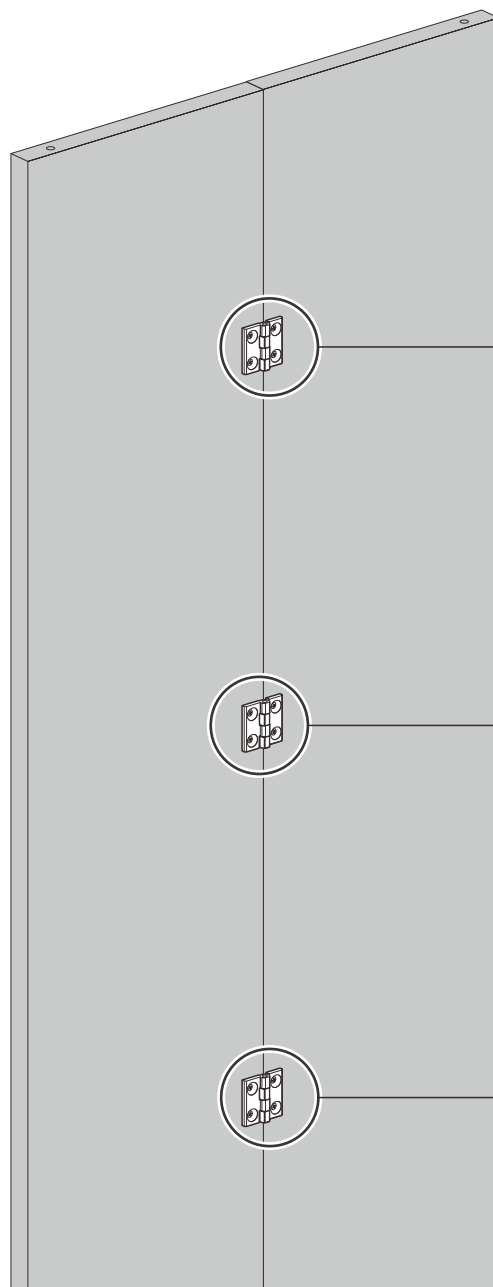
(x3)



ST6X25(x12)

Lay Panels side by side on a flat, clean surface. Push the Panels together and mount hinges in pre-drilled pilot holes. Mount Top Hinge/Center Hinge/Bottom Hinge at the door as shown.

Note: Use Short Screws

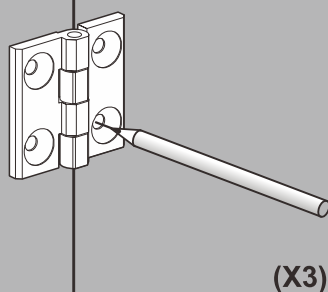


Top Hinge

Center Hinge

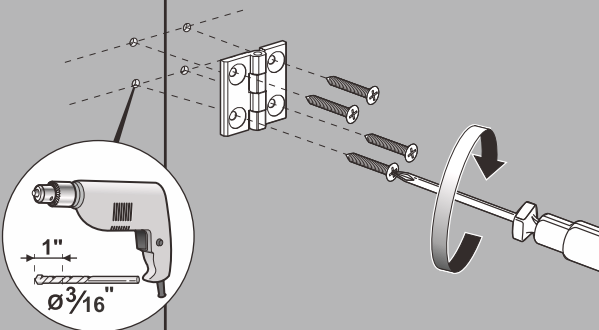
Bottom Hinge

1



(X3)

2



Bit diameter: $\frac{3}{16}$ " (4.8MM)
Borehole depth: 1" (25MM)

Installation

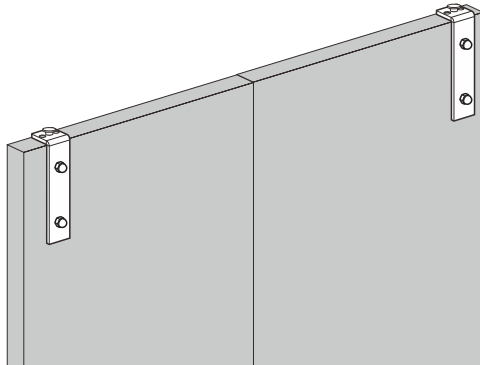
5 Install pulley base E

E

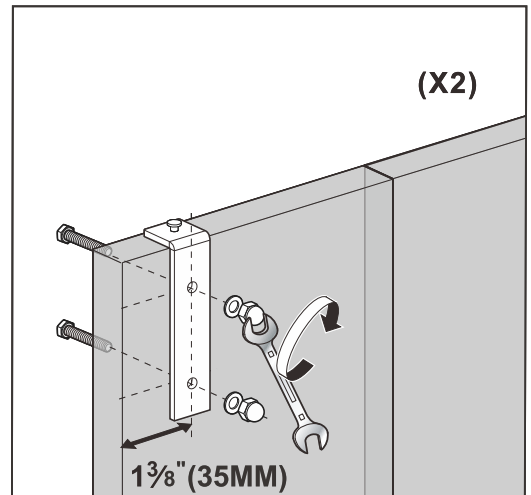


(x2)

M10x55 (x4)
bolts for 35-40mm door



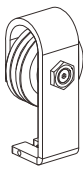
Your door panel arrives with holes for the hanging straps pre-drilled.
Use the included carriage bolts to attach the straps to the door.
Tighten slightly to secure in place



Distance of base center from the edge of door is $1\frac{3}{8}$ " (35MM) .

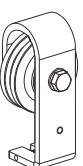
6 Hang up pulley

B

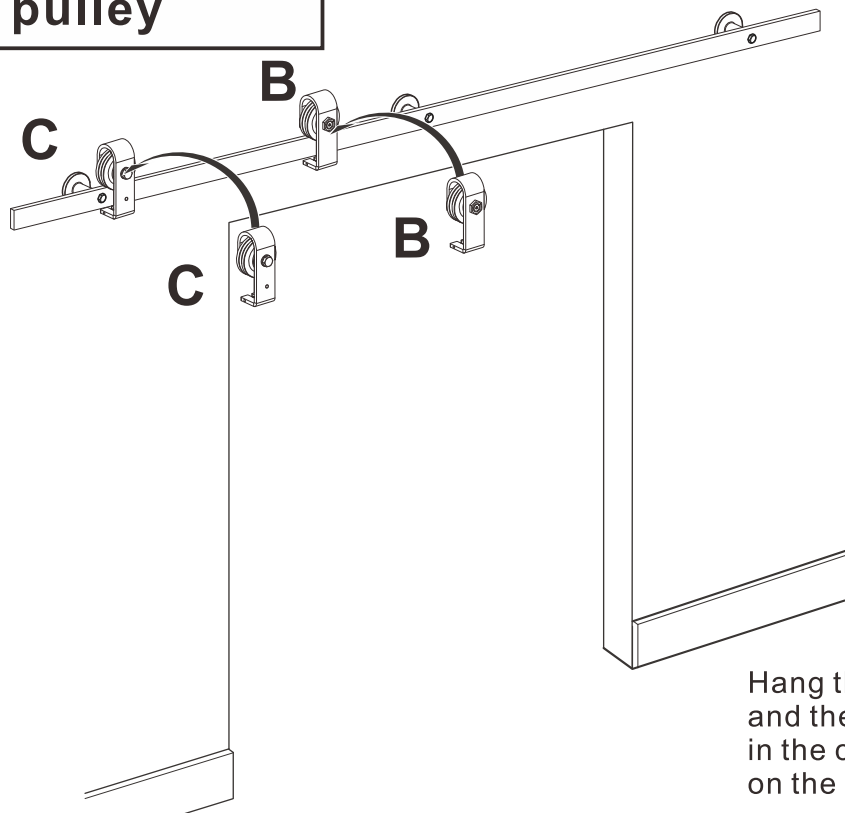


(x1)

C



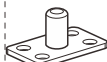
(x1)



Hang the Fixed Pulley and the Movable Pulley in the correct positions on the track

7 Install floor guide H

H



(x1)



(x1)



ST4. 2x32
(x4)



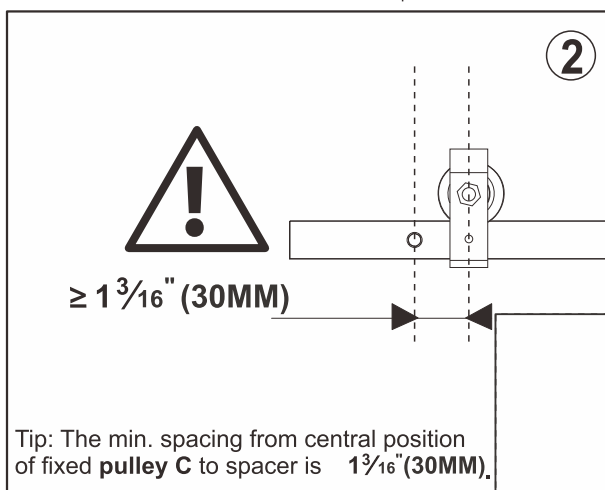
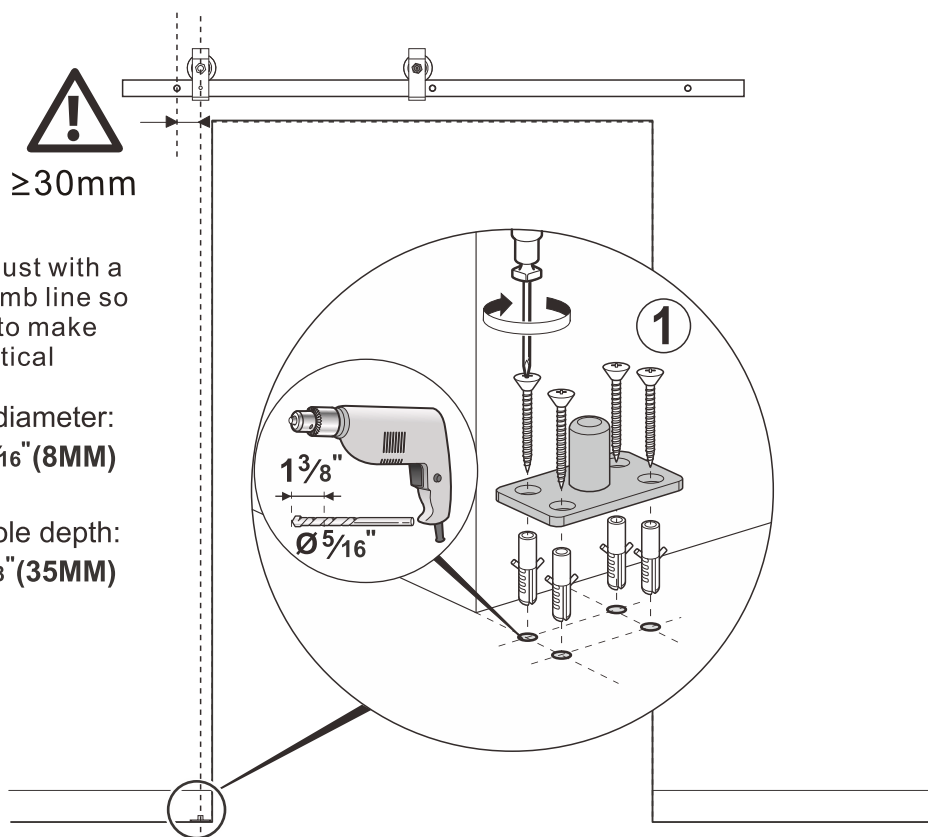
Ø8(x4)



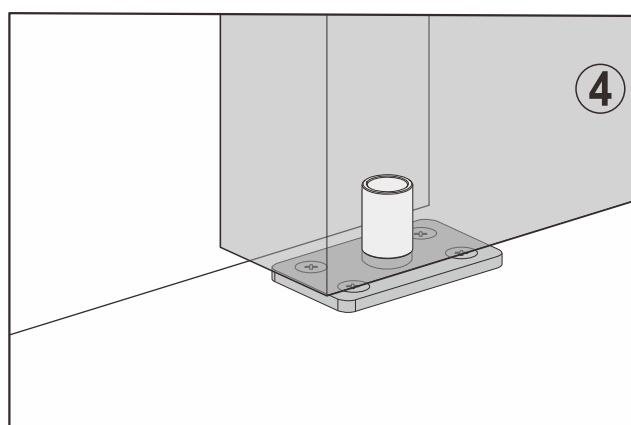
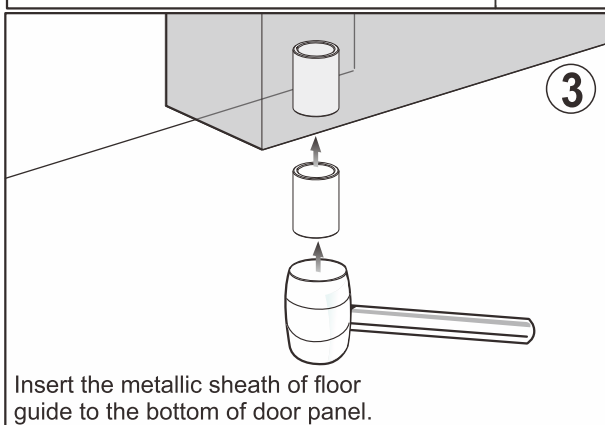
Adjust with a
plumb line so
as to make
vertical

Bit diameter:
 $\frac{5}{16}$ " (8MM)

Borehole depth:
 $1\frac{3}{8}$ " (35MM)

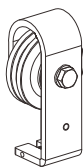


Position the floor-guide just outside the opening of the door frame. Slide the door side-to-side to test for functionality, then mark the holes with a pencil and punch a hole with diameter $\frac{5}{16}$ " (8mm) depth $1\frac{3}{8}$ " (35mm). Then put the socket on the hole, and knock it in with a wooden hammer. Finally, put the floor guide into the socket.



8 Install fixed pulley C

C



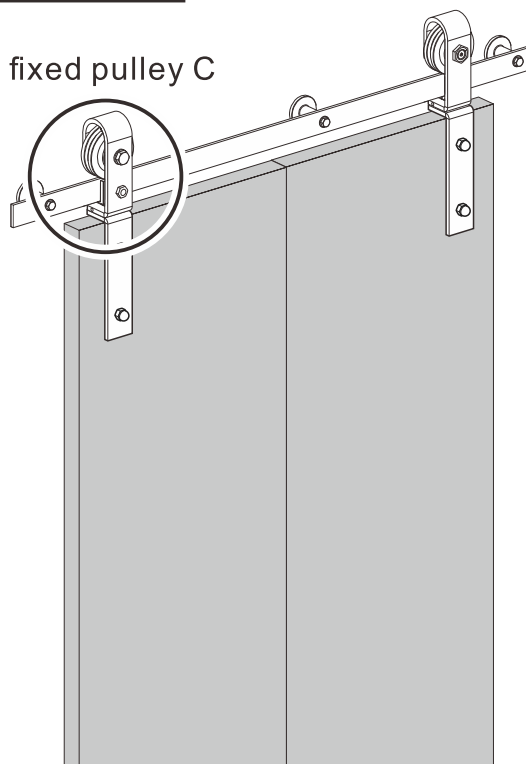
(x1)

J

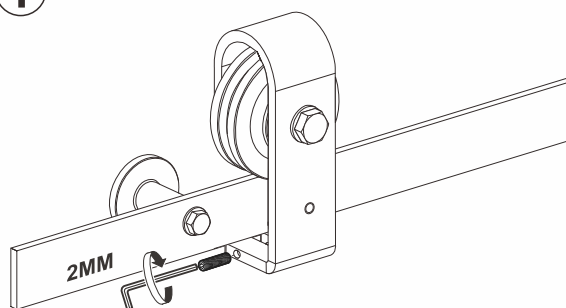


2MM
(x1)

fixed pulley C

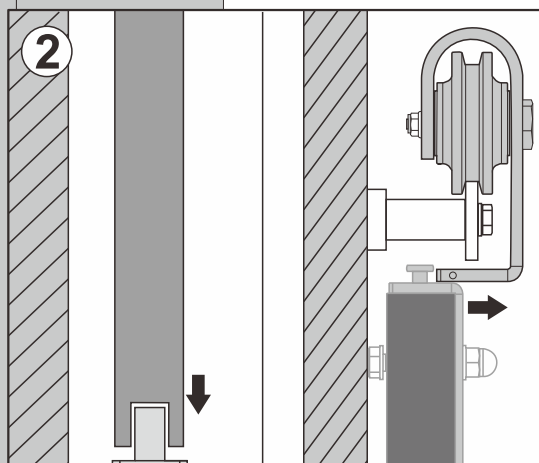


1

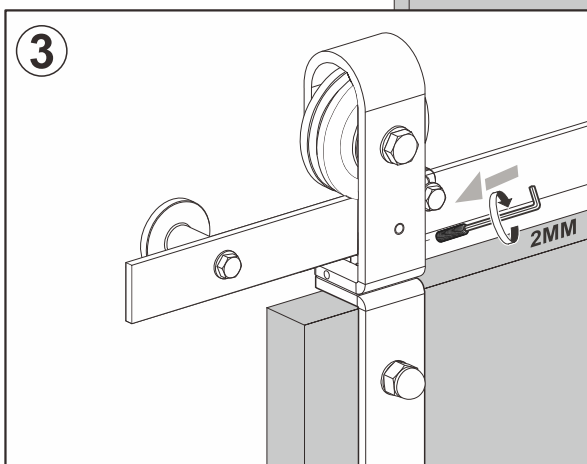


Unscrew the small screw at the bottom of hanging pulley to install the **base E**.

2



3



Unscrew the screw, adjust the position of the door and the floor guide, then push in the hanger roller slot, and fix it with screw.

9 Install movable pulley B

B



(x1)

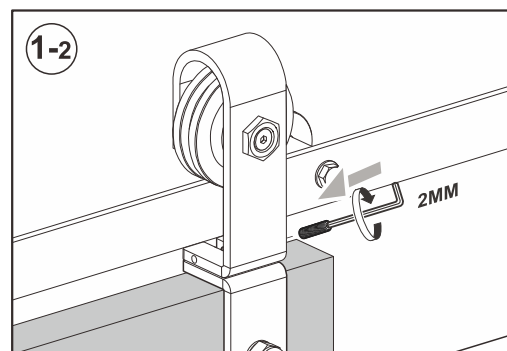
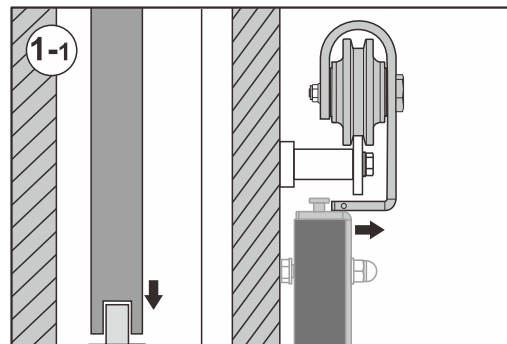
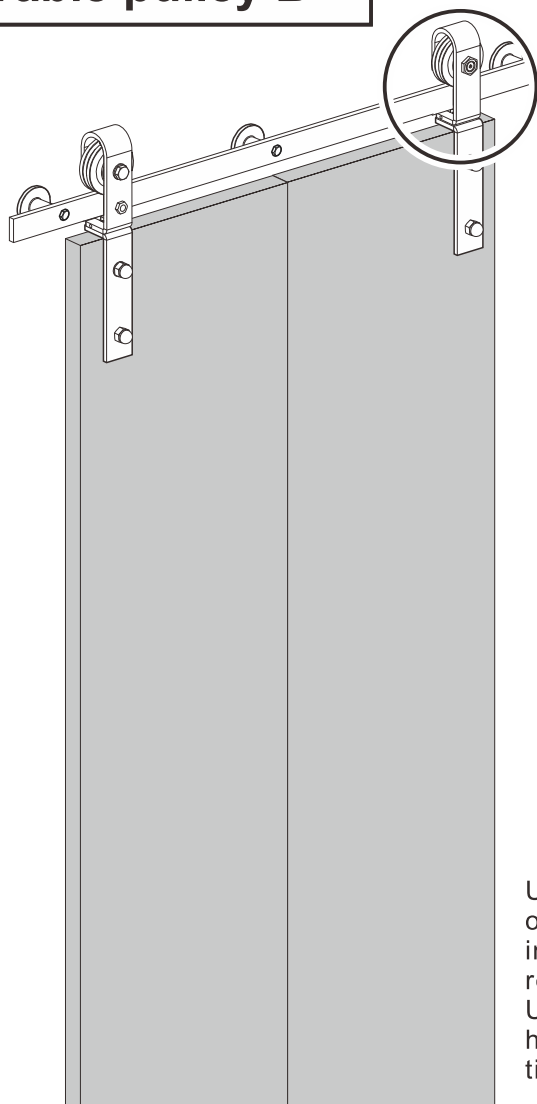
J



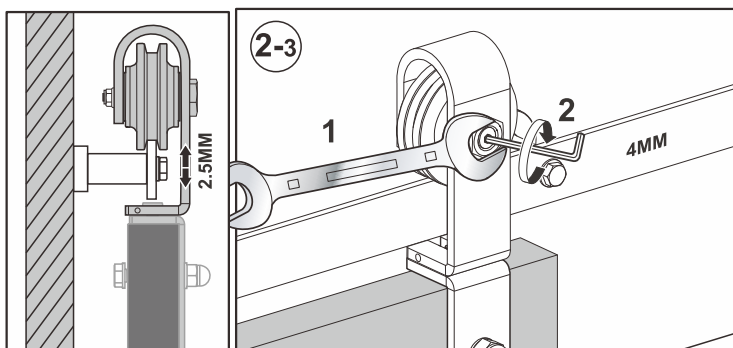
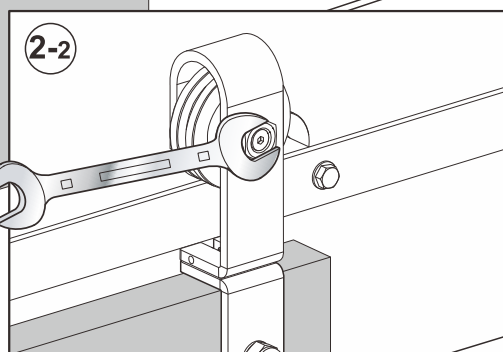
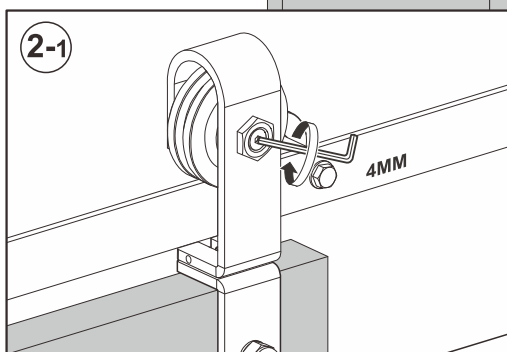
2MM(x1)



4MM(x1)



Unscrew the screw, adjust the position of the door and the floor guide then push in the hanger roller card slot, fix it with screws. Using a wrench to adjust the height of the hanger roller to a suitable position, and tighten it.



If the height of two doors are uneven, align them by adjusting the height of movable **pulley B** by hexagon wrench and wrench. (adjustment range:2.5MM)

10 Install the fixator D of hanging pulley C

C



ST5x26(x1)



(x1)

D



(x1)

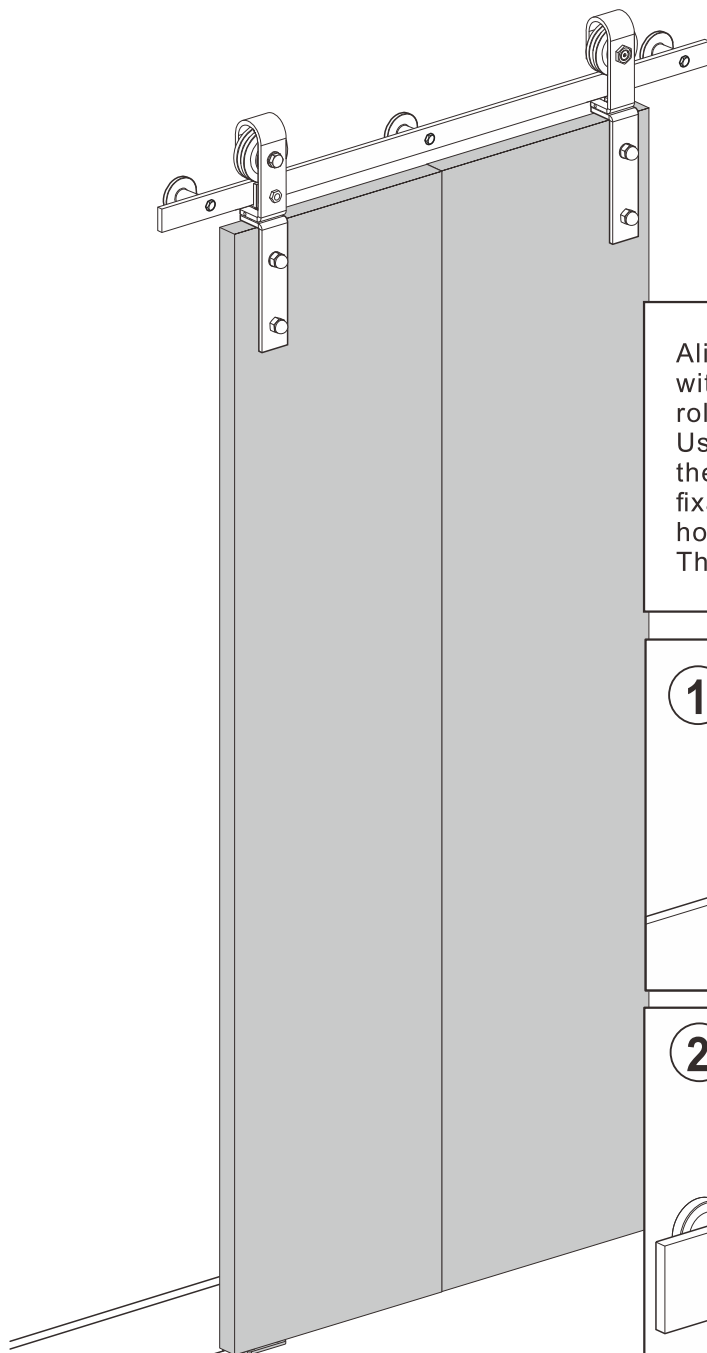


ST5x6(x2)

J

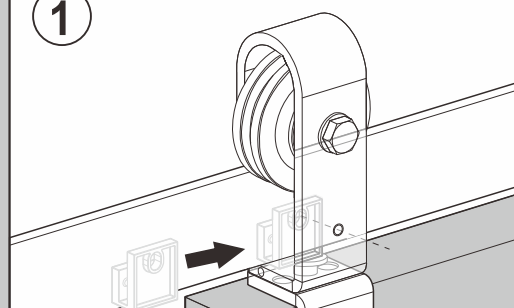


2.5MM
(x1)

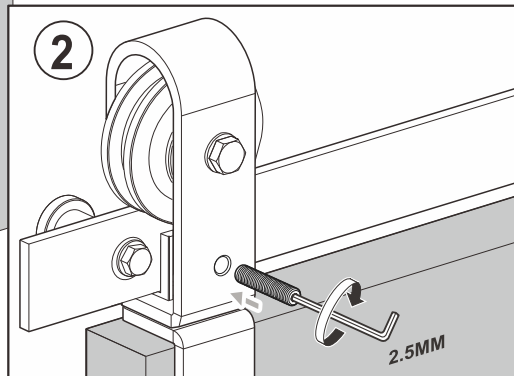


Align the hole of the fixator piece with the lower hole of the hanger roller plate. Using a wrench to pass through the hanger roller plate and the fixator piece. Tighten the other two holes of the connector with a screw. Then install the nut with the wrench.

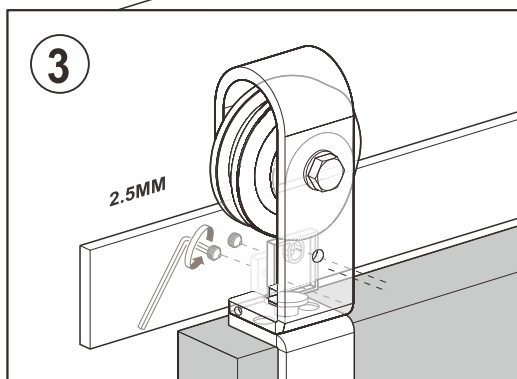
1



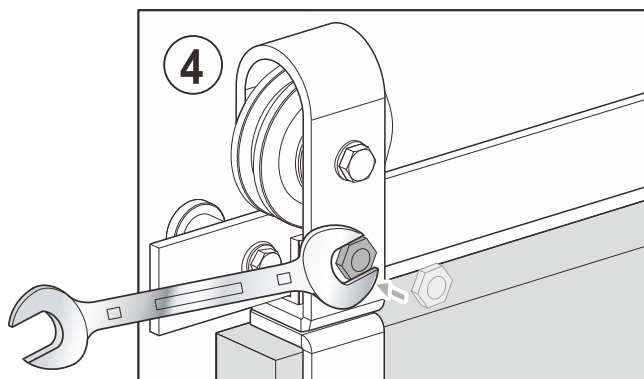
2

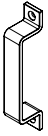


3



4

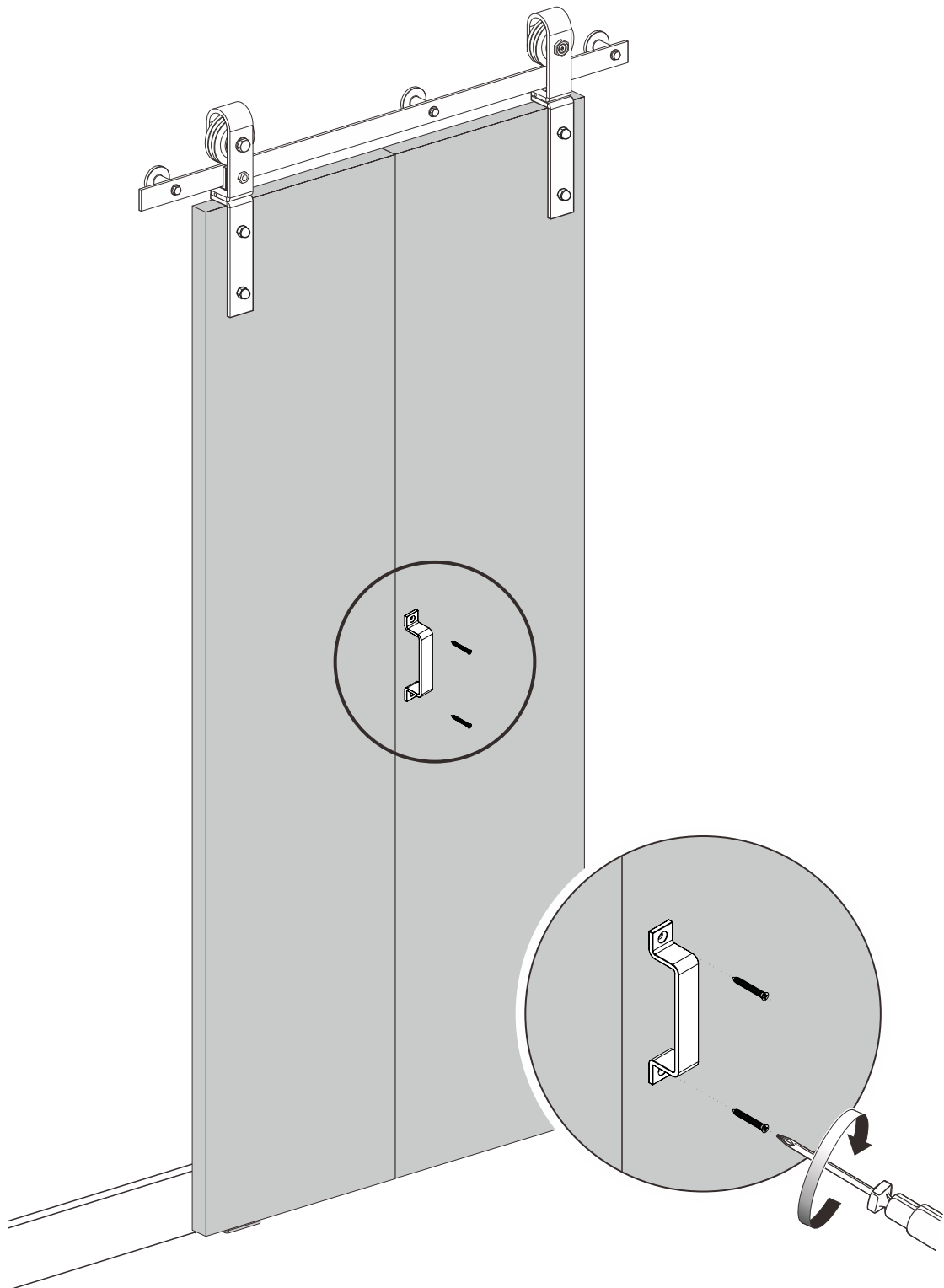


11**Attach the Door Handle****k**

(x1)



(x2)



Only use screws to mount the door handle in the pre-drilled pilot hole.