

# **VEVOR<sup>®</sup>**

**TOUGH TOOLS, HALF PRICE**

Support and E-Warranty Certificate [www.vevor.com/support](http://www.vevor.com/support)

## **FOOD CHOPPER INSTRUCTION MANUAL**

We continue to be committed to provide you tools with competitive price.

"Save Half", "Half Price" or any other similar expressions used by us only represents an estimate of savings you might benefit from buying certain tools with us compared to the major top brands and does not necessarily mean to cover all categories of tools offered by us. You are kindly reminded to verify carefully when you are placing an order with us if you are actually saving half in comparison with the top major brands.

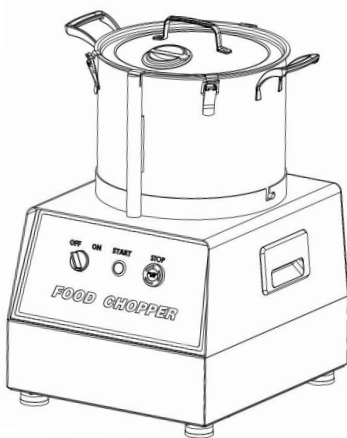


# VEVOR®

TOUGH TOOLS, HALF PRICE

## FOOD CHOPPER

**MODEL: XZ-7C XZ-15C**



### NEED HELP? CONTACT US!

Have product questions? Need technical support? Please feel free to contact us:

**Technical Support and E-Warranty Certificate**  
**[www.vevor.com/support](http://www.vevor.com/support)**

This is the original instruction, please read all manual instructions carefully before operating. VEVOR reserves a clear interpretation of our user manual. The appearance of the product shall be subject to the product you received. Please forgive us that we won't inform you again if there are any technology or software updates on our product.

**This manual covers a variety of specifications, please users according to the actual corresponding product description and use.**

## **IMPORTANT ASSURANCE**

**WARNING: Before operating this device, please read this instruction manual completely and keep it handy for future reference. Always follow basic safety precautions when using these devices. These include:**

- 1.Before using, check that the voltage power corresponds to the one shown on the appliance nameplate.Ensure that the voltage set on the machine corresponds the supply of electricity in your country.
- 2.Do not operate any appliance with a damaged cord or plug or after the appliance malfunctions, or has been damaged in any manner. Return appliance to the nearest authorized service facility for examination, repair or adjustment.
- 3.If the supply cord is damaged, it must be replaced by the manufacturer or its service agent or a similarly qualified person in order to avoid a hazard.
- 4.Do not use the product to chop anything which is very stiffen,if not,the blade will easily damaged.
- 5.Never put your hand into the bucket from the hole when machine start to work,this hole is only for put food material if there's any emergency when machine is working.
- 6.Children are not allowed to operate this product for safety concern.
- 7.Do not use appliance for other than intended use.
- 8.Except the material hopper,do not immerse the machine motor base into water as it might cause damage(please use a rag to clean the machine base).
- 9.To protect against fire, electric shock, or personal injury, do not immerse cords, electric plugs, or appliances in water or other liquids.
- 10.The use of accessories, which the appliance manufacturer does not recommend, may result in fire, electric shock, or personal injury.
- 11.This appliance can be used by children aged from 8 years and above and persons with reduced physical, sensory or mental capabilities or lack of experience and knowledge if they have been given supervision or instruction concerning use of the appliance in a safe way and understand the hazards involved.
- 12.Close supervision is necessary when any appliance is used by or near

children. Children shall not use the appliance. Cleaning and user maintenance shall not be made by children.

13. Do not use an extension cord with this product.

14. The power cord should lie flat on a table or counter surface, and may not hang over the edge. Keep it away from hot surfaces and water.

15. For optimal operation and service life of the device, please follow the instructions.

16. Food acids will corrode the metal. Always clean this food preparation equipment immediately after every use. To maintain the appearance and increase the service life, clean it daily.

17. The use of accessories or modifications not provided by the manufacturer may cause hazards. This product must only be used for its intended purpose and in the manner indicated in the instructions. All other types of use shall be considered inappropriate and hazardous. The manufacturer shall not be responsible for any improper or incorrect use and installation damage.

18. The temperature range of the glass bowl is 0°C--50°C. Can not put the glass bowl into the microwave for heating or put the food which beyond the temperature range in the glass bowl.

19. Before put into the ingredients, confirm that the blade is in position or not. If the blade can not running or running slowly, pull out the plug, and check whether there is any obstacle. Take out the obstacle if there is.

20. Blade is very sharp. Please do not touch the blade directly with your hand, and hold the arbor on the blade when you remove it.

21. Never run more than 30 seconds continuously. After work for 30 seconds, rest 2 minutes for a break. Work for 30 seconds interval of 2 minutes for a cycle, continuous work 3 cycles must be stopped by 15 minutes, wait for the motor cool down before work again.

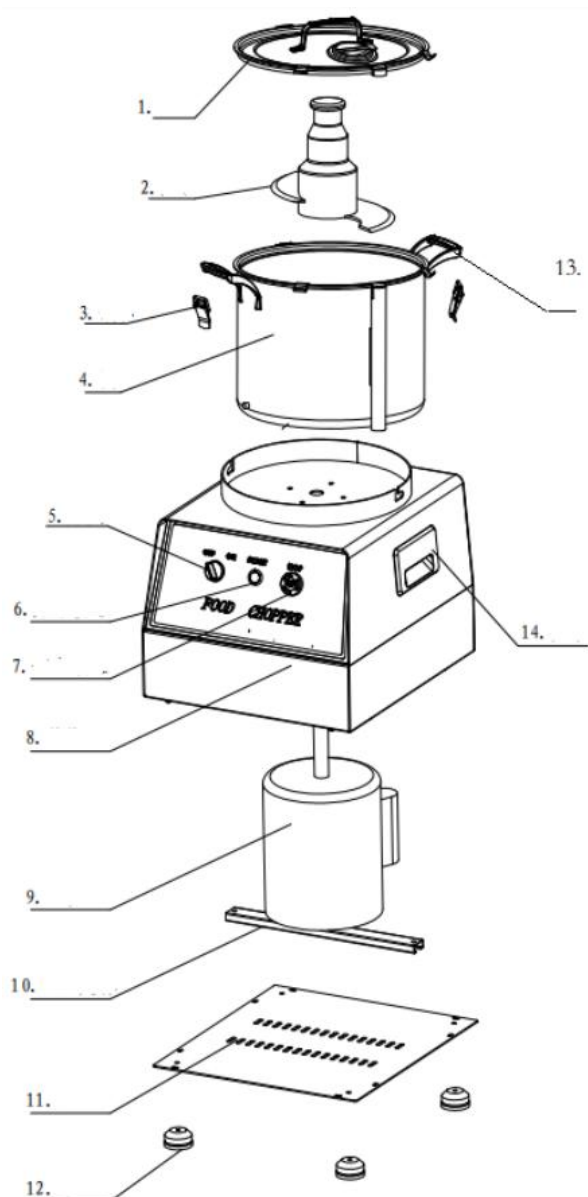
22. After finish, only can disassemble the accessory after the motor stop completely.

23. The blade is sharp. TAKE CARE.

## **SAVE THESE INSTRUCTIONS**

## SCHEMATIC DIAGRAM&CONFIGURATION

Schematic Diagram



## Parts list

1. Cover
2. Blade set
3. Latch
4. Bowl
5. Power switch
6. Start button
7. Emergency stop button
8. Host
9. Motor
10. Motor bracket
11. Bottom panel
12. Steel feet
13. Bowl handle
14. Host handle

## Accessories

Blade set(Extra)\*1    Steel brush\*1    Dust cloth \*1    Gloves\*10

## CONFIGURATION:

Model	Capacity	Voltage	Power
Xz-7c	7L	120V-60Hz/ 220-240V,50-60HZ	750W
Xz-15c	15L	120V-60Hz/ 220-240V,50-60HZ	1400W

# OPERATION INSTRUCTIONS

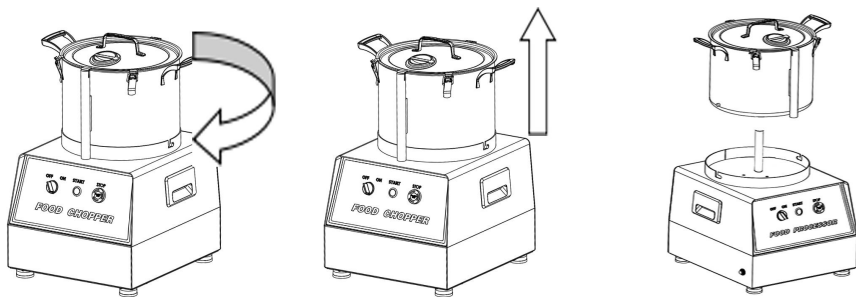
## Installation

1. Place the blade on the bowl axis.
2. Put in the ingredients. (Do not exceed the max filling level mark on the bowl).
3. Put in the cover.
4. Press the button to start running.

## Disassembly

After chopping the material, catch the handle of the bucket, turn it clockwise, and lift it up with force.

Attention: Please do not take out the blade separately. Keep it still in the bucket, lift up the bucket, and the blade will also loosen. After that, you will take out the blade more easily.



## Operation

1. Before use, clean the bowl, blade and top cover.
2. Put the ingredients in the bowl.
3. Insert the plug, and switch on the power.

## Cutting time reference for some material

It is just for reference. The cutting time is according to the material. If you want to cut it smaller, it will take a little longer time. If you need a bigger size, cutting time will be shorter.

Type	Meat	Ginger, Garlic	Spice	Grain	Vegetable
Cutting time	13S	35S	15S	30S	15S

## TROUBLESHOOTING

Potential Problem	Probable Cause	Solution
The machine does not operate after power on	The top cover is locked in place or not	Put in the top cover good



The machine stop during use	<p>1 Voltage is too low</p> <p>2 The motor works for a long time or overloaded, power supply will cut off automatically</p>	<p>1.Check power supply for compliance with rated voltage</p> <p>2.Pull out plug of power supply wait for the motor to cool (about or 30 min), use again.</p>
There is smell at the first use	Normally situation for new machine	After the motor works for some periods, it still have smell, please send back to us for check
The machine is Unusually vibrating or noisy	<p>1 .The blade not put in place</p> <p>2. The machine not put or stable place</p> <p>3 Voltage is too high</p> <p>4 The ingredients is exceed over the max filling level</p>	<p>1 Take out all the ingredients,and put blade in place</p> <p>2.Put the machine on stable place</p> <p>3.Check power supply for compliance with rated voltage</p> <p>4.Remove the power plug from he power outlet then take out the extra ingredients</p>

## CLEAN AND MAINTENANCE

1. After use, please remove the power plug from the power outlet in time.
2. For safety, please wear gloves to disassemble the blade as per the picture.
3. Please assemble the blade with the knife set after cleaning and make it dry. The blades are very sharp, please take care.
4. All accessories can be washed in soapy water or in a dishwashing liquid. To

protect against scratches on the machine, do not use a steel wire ball.

5. Never immerse the motor unit or put it under running water. Simply wipe it clean with a damp sponge.

6. If not used for a long time, please store this machine in a dry and well-ventilated place so as to prevent the motor from being damped and moldy.



# **VEVOR<sup>®</sup>**

**TOUGH TOOLS, HALF PRICE**

**Technical Support and E-Warranty Certificate**

**<https://www.vevor.com/support>**

**Made In China**