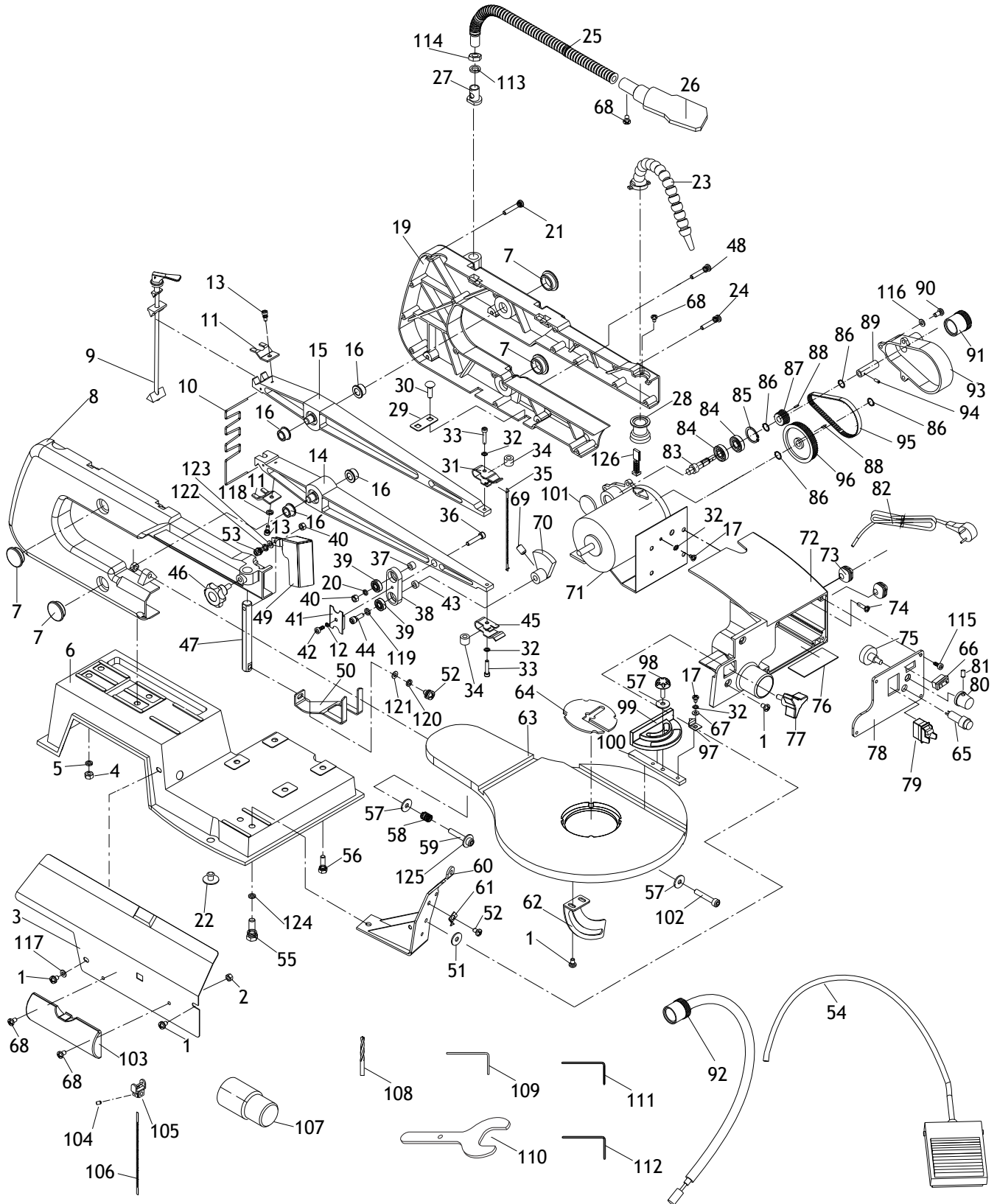


PARTS

Main



Main Parts List

REF PART # DESCRIPTION

1	X1872001	PHLP HD SCR M5-.8 X 8
2	X1872002	HEX NUT M4-.7
3	X1872003	SIDE COVER (LEFT)
4	X1872004	HEX NUT M6-1
5	X1872005	LOCK WASHER 6MM
6	X1872006	BASE
7	X1872007	DUST CAP
8	X1872008	ARM HOUSING (LEFT)
9	X1872009	TENSION BOLT ASSEMBLY
10	X1872010	ARM SPRING
11	X1872011	PRESSURE PLATE
12	X1872012	LOCK WASHER 4MM
13	X1872013	PHLP HD SCR M4-.7 X 10
14	X1872014	ARM ASSEMBLY (LOWER)
15	X1872015	ARM ASSEMBLY (UPPER)
16	X1872016	SINTERED BUSHING 16 X 18 X 9.5 IRON
17	X1872017	PHLP HD SCR M4-.7 X 6
19	X1872019	ARM HOUSING (RIGHT)
20	X1872020	LOCK WASHER 5MM
21	X1872021	PHLP HD SCR M5-.8 X 35
22	X1872022	RUBBER FOOT
23	X1872023	RIGID AIR HOSE W/NOZZLE 16 X 266
24	X1872024	PHLP HD SCR M5-.8 X 28
25	X1872025	LIGHT POST W/THREADED END M10-1
26	X1872026	LED LIGHT ASSEMBLY
27	X1872027	THREADED SLEEVE W/FLANGE M10-1 X 22
28	X1872028	RUBBER BELLOWS
29	X1872029	CONNECTOR PLATE
30	X1872030	CARRIAGE BOLT M6-1 X 20
31	X1872031	BLADE SUPPORT (UPPER)
32	X1872032	LOCK WASHER 4MM
33	X1872033	CAP SCREW M4-.7 X 20
34	X1872034	SPACER 4 X 12 X 9.5MM
35	X1872035	BLADE 0.066" 15-TPI PIN END
36	X1872036	CAP SCREW M5-.8 X 25
37	X1872037	SPACER 5 X 9.5 X 6 (UPPER)
38	X1872038	ECCENTRIC CONNECTOR
39	X1872039	BALL BEARING 625-2RS
40	X1872040	HEX NUT M5-.8
41	X1872041	ECCENTRIC CONNECTOR PLATE
42	X1872042	PHLP HD SCR M4-.7 X 10
43	X1872043	SPACER 5 X 9.5 X 4 (LOWER)
44	X1872044	CAP SCREW M5-.8 X 16
45	X1872045	BLADE SUPPORT (LOWER)
46	X1872046	KNOB BOLT M6-1 X 12, 6-LOBE, D34
47	X1872047	HOLD-DOWN SHOE ROD
48	X1872048	PHLP HD SCR M5-.8 X 30
49	X1872049	BLADE GUARD
50	X1872050	HOLD-DOWN SHOE
51	X1872051	FLAT WASHER 6MM
52	X1872052	PHLP HD SCR M6-1 X 10
53	X1872053	PHLP HD SCR M5-.8 X 25
54	X1872054	FOOT PEDAL
55	X1872055	HEX BOLT M8-1.25 X 16
56	X1872056	HEX BOLT M6-1 X 20
57	X1872057	FLAT WASHER 6 X 12 X 1MM
58	X1872058	COMPRESSION SPRING 1 X 10 X 13

REF PART # DESCRIPTION

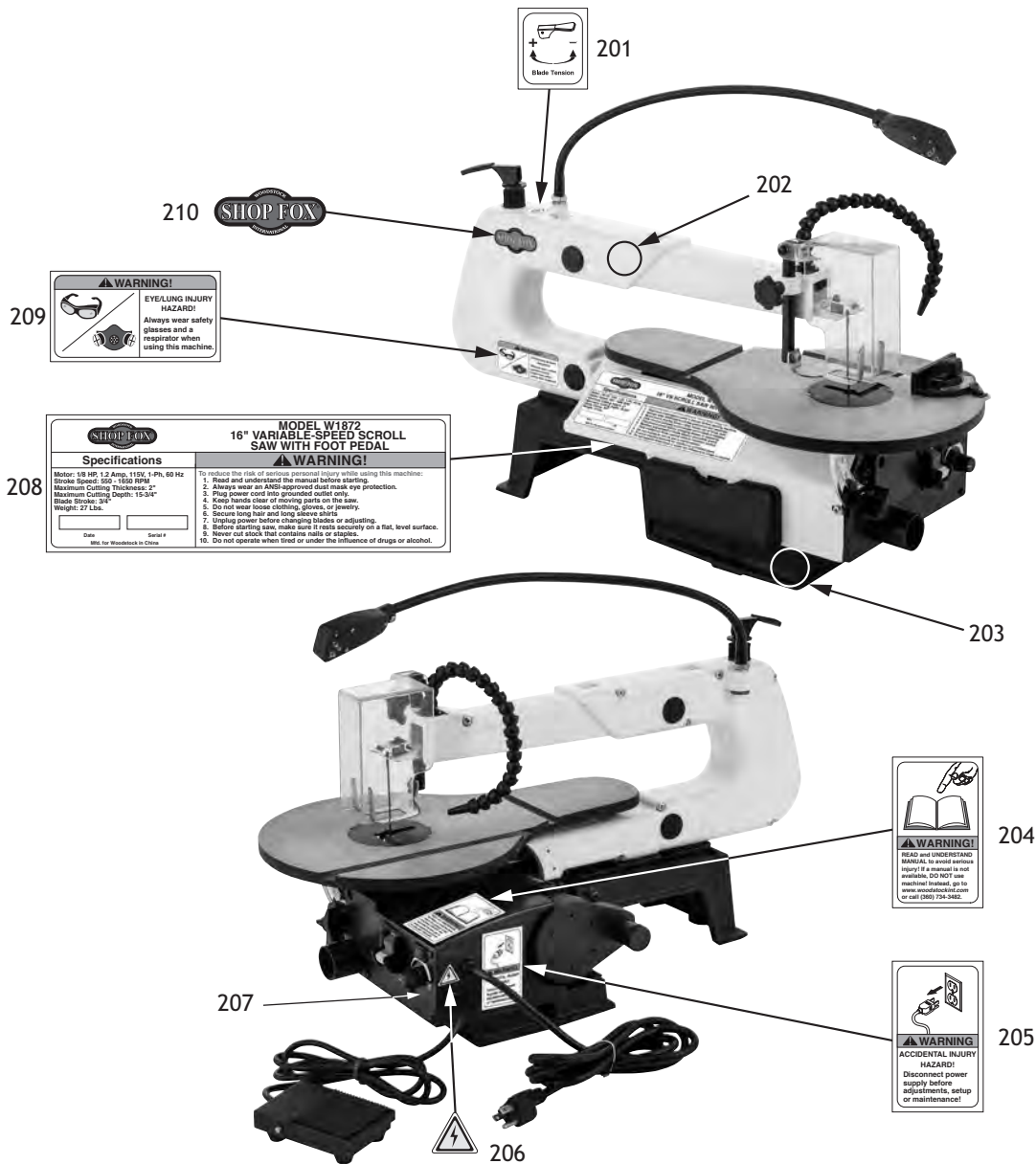
59	X1872059	CAP SCREW M6-1 X 40
60	X1872060	TABLE SUPPORT
61	X1872061	POINTER
62	X1872062	TABLE TILT SCALE
63	X1872063	TABLE
64	X1872064	TABLE INSERT
65	X1872065	POWER INDICATOR LIGHT 120V
66	X1872066	FOOT PEDAL ON/OFF SWITCH
67	X1872067	FLAT WASHER 4MM
68	X1872068	PHLP HD SCR M4-.7 X 8
69	X1872069	SET SCR M8-1 X 12
70	X1872070	ECCENTRIC COUNTERWEIGHT
71	X1872071	MOTOR 1/8HP 120V DC 1-PH
72	X1872072	JUNCTION BOX
73	X1872073	STRAIN RELIEF TYPE-1 M17
74	X1872074	PHLP HD SCR M4-.7 X 10
75	X1872075	POTENTIOMETER C104
76	X1872076	CIRCUIT BOARD
77	X1872077	KNOB BOLT M6-1 X 16, 3-LOBE, D30
78	X1872078	SWITCH COVER
79	X1872079	TOGGLE SWITCH KEDU HY7
80	X1872080	VARIABLE SPEED DIAL
81	X1872081	SET SCREW M5-.8 X 6 CONE-PT
82	X1872082	POWER CORD 18G 3W 72" 5-15P
83	X1872083	SHAFT
84	X1872084	BALL BEARING 608ZZ
85	X1872085	EXT RETAINING RING 22MM
86	X1872086	EXT RETAINING RING 6MM
87	X1872087	SMALL PULLEY 200D X 10
88	X1872088	KEY 3 X 3 X 8
89	X1872089	COUPLING
90	X1872090	PHLP HD SCR M5-.8 X 12
91	X1872091	SAFETY CAP
92	X1872092	FLEXIBLE SHAFT
93	X1872093	BELT COVER
94	X1872094	ROLL PIN 3 X 8
95	X1872095	TIMING BELT 234.95 X 5MM
96	X1872096	LARGE PULLEY 560D X 10ID
97	X1872097	MITER GAUGE SCALE POINTER
98	X1872098	KNOB BOLT M5-.8 X 16, D20, ROUND
99	X1872099	MITER GAUGE BODY
100	X1872100	MITER GAUGE BAR
101	X1872101	DUST COVER
102	X1872102	CAP SCREW M6-1 X 25
103	X1872103	TOOL BOX
104	X1872104	SET SCREW M5-.8 X 8
105	X1872105	BLADE ADAPTER
106	X1872106	BLADE 0.066" 18-TPI PLAIN END
107	X1872107	DUST PORT ADAPTER 1-1/4" X 1-1/2"
108	X1872108	DRILL BIT 3.2MM
109	X1872109	COLLET LOCKING PIN
110	X1872110	FLAT WRENCH 9MM OPEN-END
111	X1872111	HEX WRENCH 3MM
112	X1872112	HEX WRENCH 2.5MM
113	X1872113	LOCK WASHER 10MM
114	X1872114	HEX NUT M10-1 THIN
115	X1872115	TAP SCREW M4-.7 X 10

Main Parts List (Cont.)

REF	PART #	DESCRIPTION
116	X1872116	FLAT WASHER 5MM
117	X1872117	FLAT WASHER 5MM
118	X1872118	LOCK WASHER 4MM
119	X1872119	LOCK WASHER 5MM
120	X1872120	LOCK WASHER 6MM
121	X1872121	FLAT WASHER 6MM

REF	PART #	DESCRIPTION
122	X1872122	LOCK WASHER 5MM
123	X1872123	FLAT WASHER 5MM
124	X1872124	LOCK WASHER 8MM
125	X1872125	FLAT WASHER 6MM
126	X1872126	CARBON MOTOR BRUSH 2-PC SET

Labels & Cosmetics



REF	PART #	DESCRIPTION
201	X1872201	BLADE TENSION KNOB LABEL
202	X1872202	TOUCH-UP PAINT, SHOP FOX WHITE
203	X1872203	TOUCH-UP PAINT, SHOP FOX BLACK
204	X1872204	READ MANUAL LABEL
205	X1872205	DISCONNECT POWER LABEL

REF	PART #	DESCRIPTION
206	X1872206	ELECTRICITY WARNING LABEL
207	X1872207	VARIABLE SPEED DIAL LABEL
208	X1872208	MACHINE ID LABEL
209	X1872209	RESPIRATOR/GLASSES LABEL
210	X1872210	SHOP FOX LOGO LABEL

WARNING

Safety labels warn about machine hazards and how to prevent serious personal injury. The owner of this machine **MUST** maintain the original location and readability of all labels on this machine. If any label is removed or becomes unreadable, **REPLACE** that label before allowing machine to be operated again. Contact us at (360) 734-3482 or www.woodstockint.com to order new labels.