

# 36"/42"/48"x 24"x 34.5" Two Door Two Drawer Base Kitchen Cabinet - Full Assembly

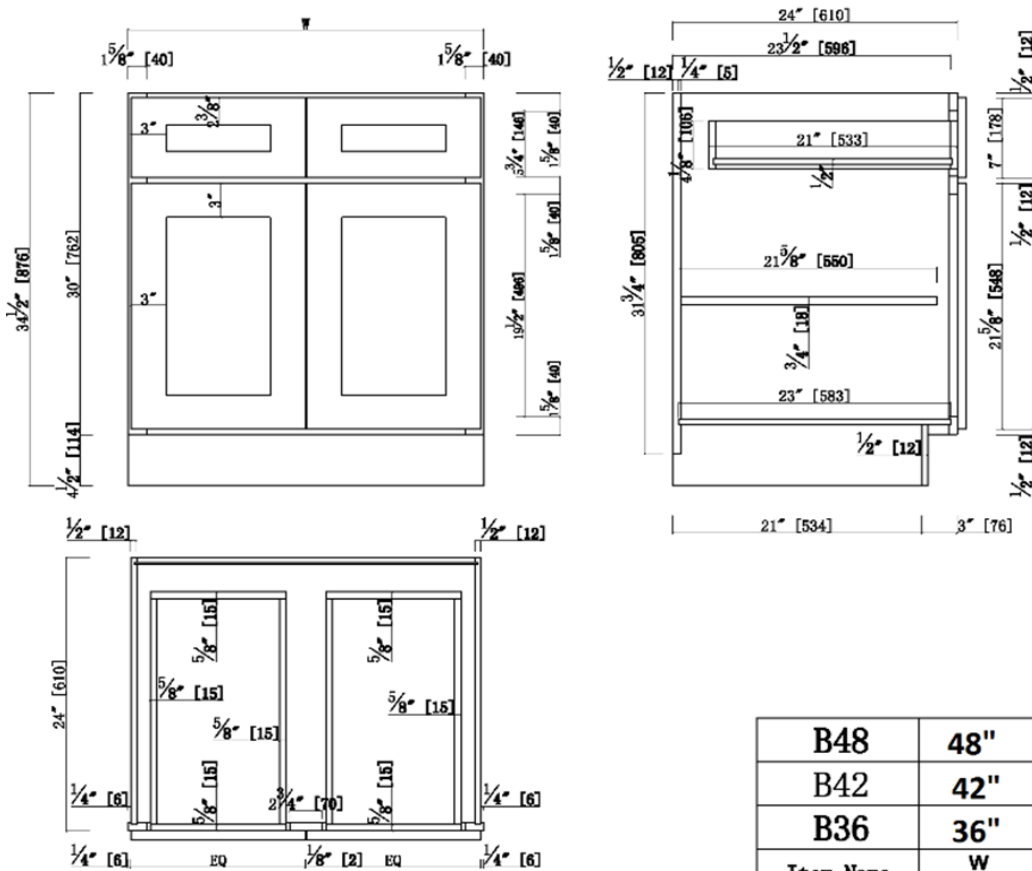


## Specifications

- 3" Wide Shaker Door
- 3/4" Solid maple face frame, Fully overlay with 1/4" reveal
- MDF with wood veneer for door center & drawer center for espresso finish
- 3/4" solid maple door frame & drawer frame for espresso finish
- 3/4" Premium HDF door & & drawer front for white finish
- Soft-closing hinge, 6 way adjustable
- Under-mounted epoxy glide, soft-closing glide can be offered for upgrade option.
- 21" Solid Wood Dovetail Drawers
- 1/2" plywood with poplar veneer for side panels, bottom panels
- Metal Clips connectors
- Full Assembly
- CARB P2 compliant



## Dimensions



B48	48"	23.75"
B42	42"	20.75"
B36	36"	17.75"
Item Name	W	EQ

## Warranty & Compliances

Warranty: Limited 1 year warranty  
 California 93120: Compliant



## Order Codes & Finishes/Colors

Finish	Full Assembly Item#	RTA Item#	
Espresso Finish	36" x 24" x 34.5"	613687	561993
	42" x 24" x 34.5"	620229	562009
	48" x 24" x 34.5"	620239	562017
White Finish	36" x 24" x 34.5"	613208	561407
	42" x 24" x 34.5"	613216	561415
	48" x 24" x 34.5"	613224	561423

Type:  
 Job:  
 Order Code:  
 Approvals:

Design House reserves the right to make changes in materials, specifications & models at any time. Design House also reserves the right to discontinue product without notice or obligation.