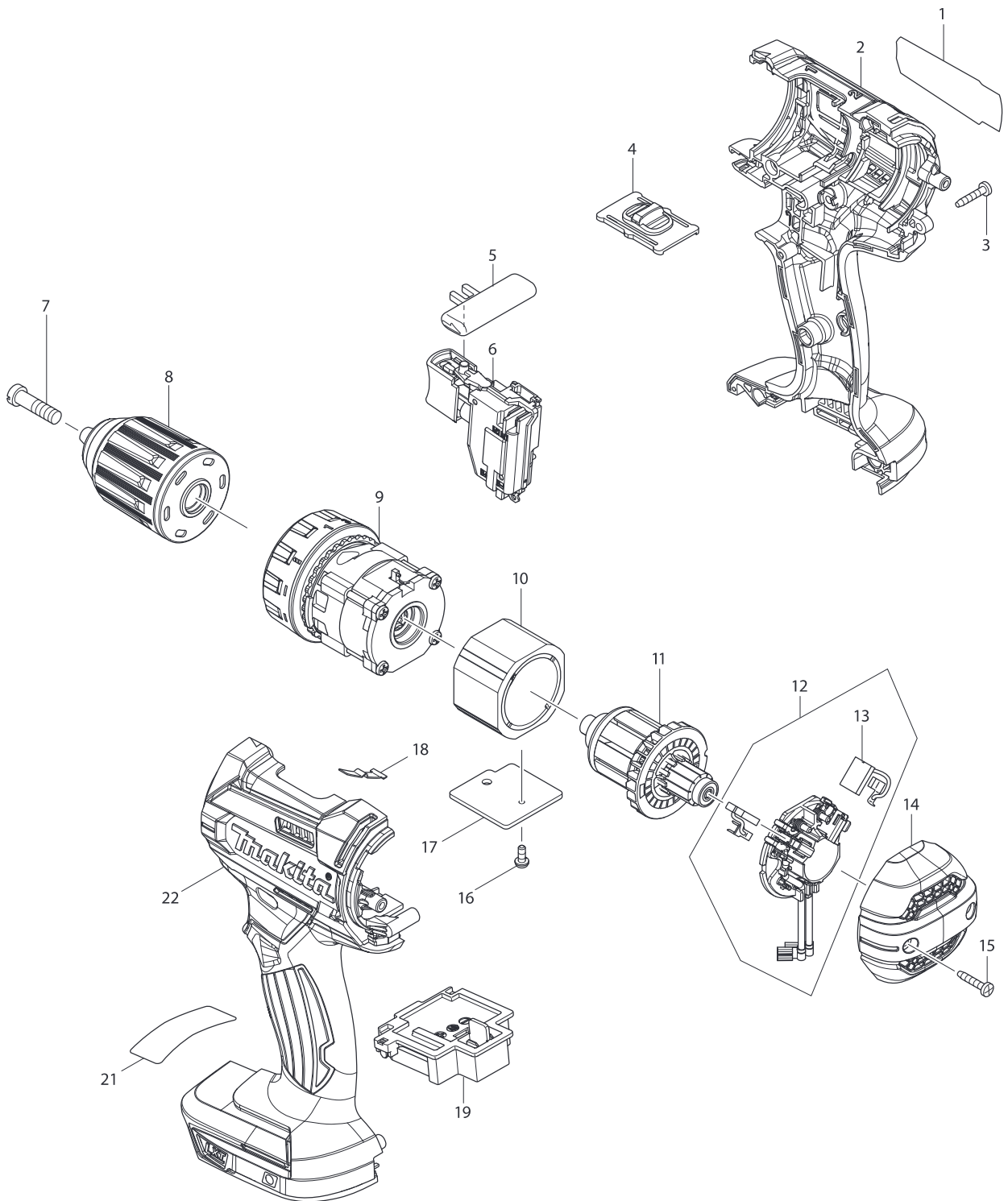


## Model XDT11R Parts list

A = Standard Equipment

O = Circuit Diagram

Item#	Part#	Description	Q'ty	Unit
001	266429-2	TAPPING SCREW 3X16	8	PC.
002	851E28-9	XDT11 NAME PLATE	1	
003	183B63-4	HOUSING SET	1	
	C10 263005-3	RUBBER PIN 6	2	PC.
	D10	INC. 36		
004	806W83-4	CAUTION LABEL	1	
005	455053-8	F/R CHANGE LEVER	1	PC.
006	650751-1	SWITCH	1	
	C10 620445-2	LED CIRCUIT	1	
007	643852-2	TERMINAL	1	PC.
008	231951-8	RING SPRING 11	1	PC.
009	267085-1	FLAT WASHER 12	1	PC.
010	233005-7	COMPRESSION SPRING 13	1	PC.
011	326068-1	BIT SLEEVE	1	PC.
012	424738-7	BUMPER	1	
013	143299-5	HAMMER CASE COMPLETE	1	
014	261151-6	NYLON WASHER 19	1	PC.
015	216040-0	STEEL BALL 3.5	2	PC.
016	326563-1	ANVIL M	1	
017	326564-9	HAMMER	1	
018	216040-0	STEEL BALL 3.5	24	PC.
019	267175-0	FLAT WASHER 24	1	PC.
020	234251-5	COMPRESSION SPRING 25	1	PC.
021	216041-8	STEEL BALL 5.6	2	
022	227362-3	SPUR GEAR 22	2	PC.
023	326562-3	SPINDLE	1	
024	256253-1	PIN 5	2	PC.
025	253314-8	THIN WASHER 15	1	PC.
026	227378-8	INTERNAL GEAR 51	1	
027	213507-9	O RING 40	1	PC.
028	143298-7	BEARING BOX COMPLETE	1	
029	638396-5	YOKE UNIT	1	PC.
030	619377-8	ARMATURE	1	
031	CB448	CARBON BRUSH CB-448 (196855-0)	2	
032	632F23-2	BRUSH HOLDER COMPLETE	1	
	D10	INC. 31		
033	263032-0	RUBBER PIN 4	4	PC.
034	456044-2	REAR COVER	1	
035	266429-2	TAPPING SCREW 3X16	2	PC.
036	183B63-4	HOUSING SET	1	
	C10 263005-3	RUBBER PIN 6	2	PC.
	D10	INC. 3		
A01	346449-3	HOOK	1	PC.
A02	266622-8	+ TRUSS HEAD SCREW M4X12	1	PC.
A03	141856-3	PLASTIC CARRYING CASE COMPLETE	1	PC. (XDT11R)
	C10 162302-3	LATCH	2	PC. (XDT11R)
	C20 324207-7	SHAFT	1	PC. (XDT11R)
	C30 451749-9	HANDLE	1	PC. (XDT11R)
A04	450128-8	BATTERY COVER	1	PC. (XDT11R)
A05	***DC18RC	DC18RC FAST CHARGER	1	PC. (XDT11R)
A06	BL1820B	BATTERY BL1820B SET	2	(XDT11R)
D01	652045-0	+PAN HEAD SCREW M3.5X5	2	PC.

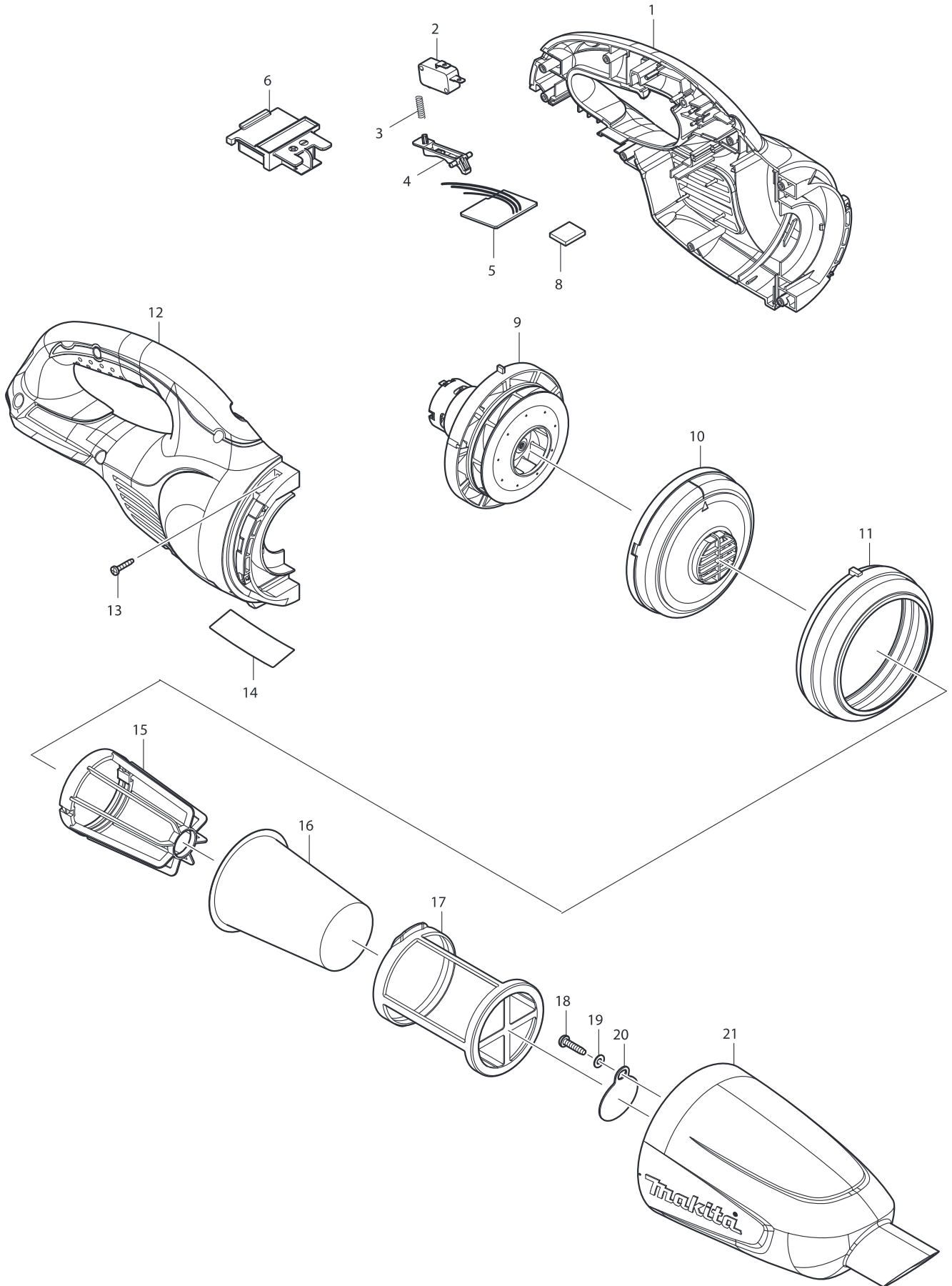


## Model XFD10Z Parts List

A = Standard Equipment

O = Circuit Diagram

Item#	Part#	Description	Q'ty	Unit
001	851E34-4	XFD10 NAME PLATE	1	
002	183B65-0	HOUSING SET	1	
	C10 263005-3	RUBBER PIN 6	2	PC.
	D10	INC. 22		
003	266429-2	TAPPING SCREW 3X16	9	PC.
004	123442-2	SPEED CHANGE LEVER ASSEMBLY	1	
	C10 233438-6	COMPRESSION SPRING 4	2	PC.
005	419041-9	F/R CHANGE LEVER	1	PC.
006	650753-7	SWITCH	1	
	C10 620444-4	LED CIRCUIT	1	
007	251468-5	- FLAT HEAD SCREW M6X22	1	PC.
008	766027-7	KEYLESS DRILL CHUCK 13	1	
009	123444-8	GEAR ASSEMBLY	1	
010	632F32-1	YOKE UNIT	1	
011	619380-9	ARMATURE	1	
012	632F22-4	BRUSH HOLDER COMPLETE	1	
	D10	INC. 13		
013	CB440	CARBON BRUSH CB-440 (195021-6)	1	SET
014	456099-7	REAR COVER	1	
015	266429-2	TAPPING SCREW 3X16	2	PC.
016	911006-2	PAN HEAD SCREW M3X8	1	PC.
017	689070-8	HEAT SINK	1	PC.
018	232182-2	LEAF SPRING	1	PC.
019	644808-8	TERMINAL	1	PC.
021	806Y20-0	CAUTION LABEL	1	
022	183B65-0	HOUSING SET	1	
	C10 263005-3	RUBBER PIN 6	2	PC.
	D10	INC. 2		
A01	251314-2	+ SCREW M4X12	1	PC.
A02	346449-3	HOOK	1	PC.

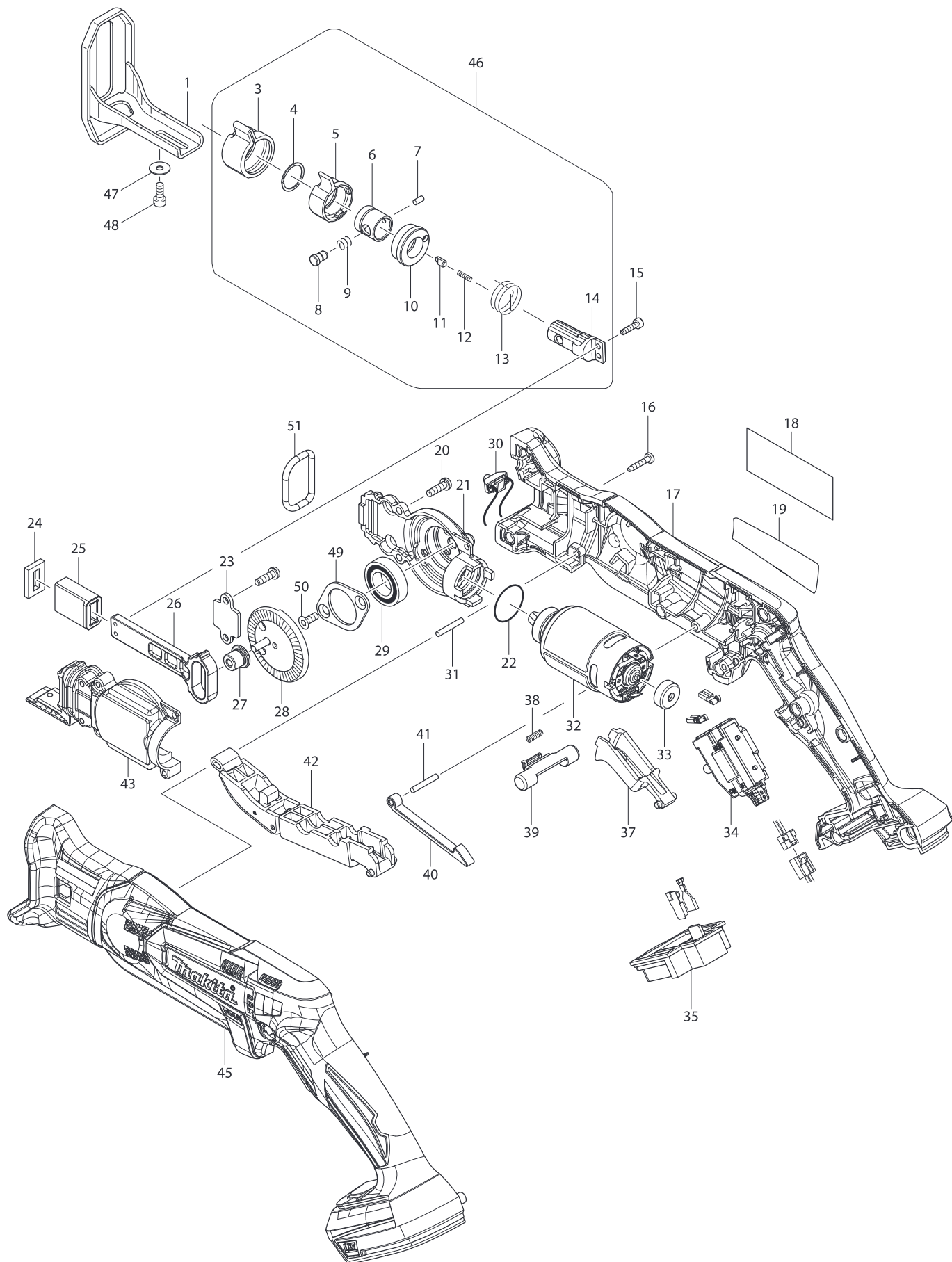


## Model XLC02ZB Parts List

A = Standard Equipment

○ = Circuit Diagram

Item#	Part#	Description	Q'ty Unit
001	183G95-1	HOUSING SET	1
	C10 424209-4	SPONGE SHEET 50-50	2 PC.
	C20 802X57-9	CAUTION LABEL	1 PC.
	D10	INC. 12	
002	651891-8	SWITCH V-15-3A6	1 PC.
003	231473-8	COMPRESSION SPRING 4	1 PC.
004	451227-9	SWITCH LEVER	1 PC.
005	638936-9	CONTROLLER UNIT	1 PC.
006	643860-3	TERMINAL	1 PC.
008	424248-4	SPONGE SHEET 15-25	1 PC.
009	125867-6	MOTOR ASS'Y	1 PC.
	C10 452455-9	BASE	1 PC.
	C20 265199-0	+ PAN HEAD SCREW M3X8	2 PC.
	C30 240102-2	FAN 82	1 PC.
010	416030-5	FAN COVER	1 PC.
011	424320-2	RUBBER RING	1 PC.
012	183G95-1	HOUSING SET	1
	C10 424209-4	SPONGE SHEET 50-50	2 PC.
	C20 802X57-9	CAUTION LABEL	1 PC.
	D10	INC. 1	
013	266429-2	TAPPING SCREW 3X16	7 PC.
014	815F74-2	XLC02 NAME PLATE	1
015	410237-5	STAY	1 PC.
016	443060-3	FILTER	1 PC.
017	451208-3	PRE-FILTER	1 PC.
018	265995-6	TAPPING SCREW 4X18	1 PC.
019	941051-3	FLAT WASHER 4	1 PC.
020	424208-6	VALVE	1 PC.
021	456196-9	CAPSULE	1
022	424308-2	SPONGE SHEET 50-36	1 PC.
023	632H18-7	FUSE UNIT	1
A01-1	123539-7	NOZZLE ASSEMBLY	1
	C10 451410-8	ROLLER	4 PC.
	C20 268208-4	PIN 3	4 PC.
	C30 424096-1	WIPER	1 PC.
A02	456586-6	SASH NOZZLE	1
A03	456587-4	PIPE	1
A04	456585-8	SASH NOZZLE HOLDER	1



## Model XRJ01Z Parts List

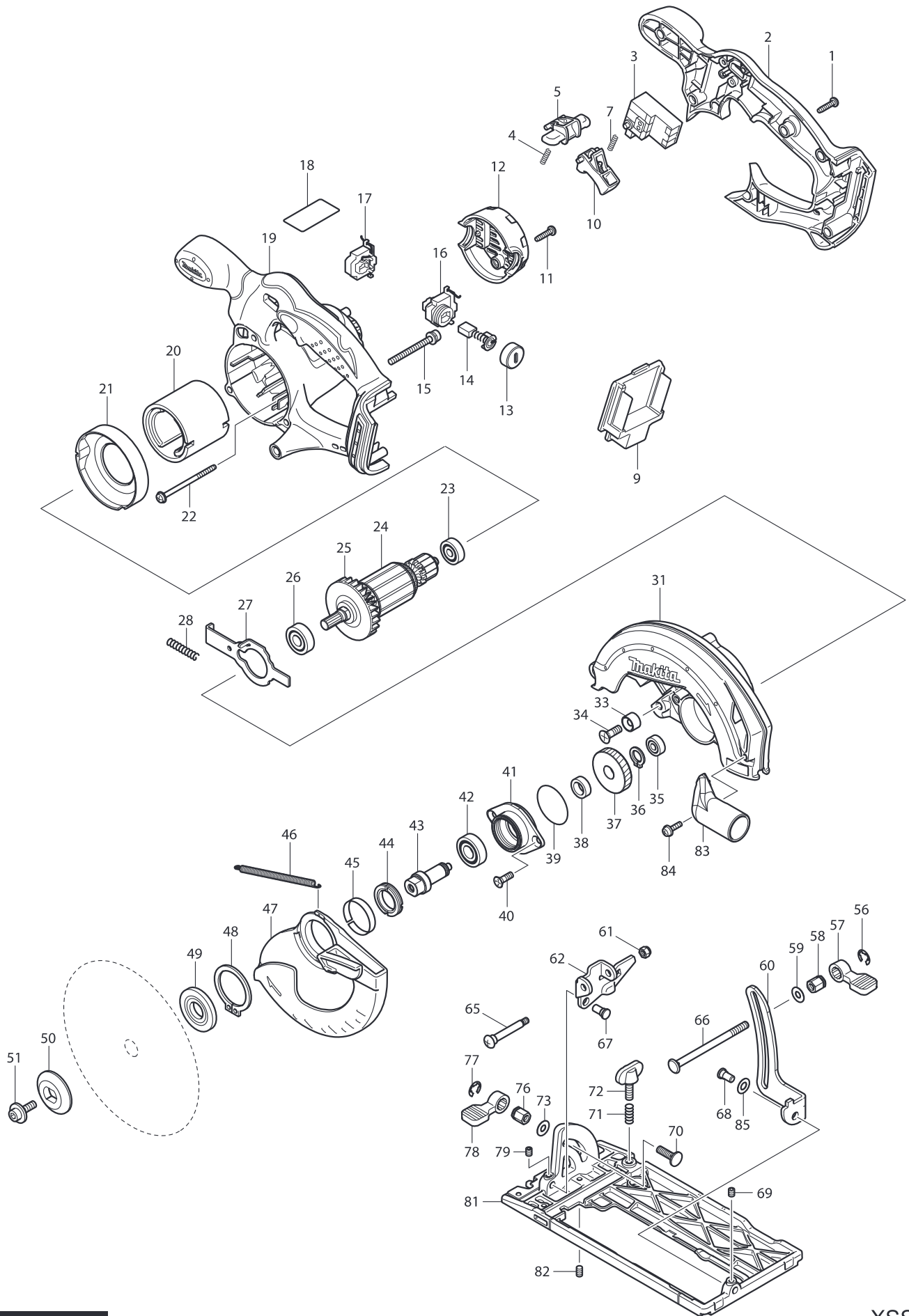
A = Standard Equipment

O = Circuit Diagram

Item#	Part#	Description	Q'ty	Unit
1	165740-8	SHOE	1	
3	424466-4	PROTECTOR	1	PC.
4	257981-1	RETAINING RING (EXT)16	1	PC.
5	310496-0	DRIVING SLEEVE	1	PC.
6	331963-2	GUIDE SLEEVE	1	PC.
7	268094-3	PIN 3	1	PC.
8	256492-3	SHOULDER PIN 5	1	PC.
9	233345-3	COMPRESSION SPRING 6	1	PC.
10	453071-0	CONNECTING SLEEVE	1	PC.
11	310495-2	PUSH PIN	1	PC.
12	233025-1	COMPRESSION SPRING 2	1	PC.
13	233594-2	TORTION SPRING 17	1	PC.
14	326113-2	BLADE GUIDE	1	PC.
15	265910-0	HEX. SOCKET HEAD BOLT M3X12	2	PC.
16	266429-2	TAPPING SCREW 3X16	10	PC.
17	187760-2	HOUSING SET	1	
	C10 263005-3	RUBBER PIN 6	2	PC.
	C20 423475-0	SPONGE SHEET	1	
	D10	INC. 45		
19	814V97-3	XRJ01 NAME PLATE	1	
20	266747-8	PAN HEAD SCREW M4X14 WITH WM	5	PC.
21	319060-4	GEAR HOUSING	1	
22	213961-7	O RING 22	1	PC.
23	346525-3	PLATE	1	PC.
24	443185-3	FELT SEAL	1	
25	313220-0	SLIDER GUIDE	1	PC.
26	313271-3	SLIDER	1	
27	313270-5	COLLARED SLEEVE 4	1	
28	142284-5	GEAR COMPLETE	1	
29	211242-3	BALL BEARING 6902ZZ	1	PC.
30	620237-9	LED CIRCUIT	1	
31	256158-5	PIN 3	1	PC.
32	629105-3	DC MOTOR	1	
33	424467-2	CAP	1	PC.
34	650712-1	SWITCH C3HY-1A-PRLMS	1	
35	643852-2	TERMINAL	1	PC.
37	453072-8	SWITCH LEVER R	1	PC.
38	233438-6	COMPRESSION SPRING 4	1	PC.
39	454661-2	LOCK OFF LEVER R	1	
40	313219-5	LINK	1	PC.
41	256158-5	PIN 3	1	PC.
42	141128-6	SWITCH LEVER F COMPLETE	1	PC.
43	319061-2	GEAR HOUSING COVER	1	
45	187760-2	HOUSING SET	1	
	C10 263005-3	RUBBER PIN 6	2	PC.
	C20 423475-0	SPONGE SHEET	1	
	D10	INC. 17		
46	126201-3	BLADE CLAMP ASSEMBLY	1	PC.



	D10	INC. 3-14	
47	253874-0	FLAT WASHER 4	1 PC.
48	922112-8	HEX. SOCKET HEAD BOLT M4X10	1 PC.
49	285738-0	BEARING RETAINER 36	1
50	265035-0	COUNTERSUNK HEAD SCREW M4X10	2 PC.
51	424597-9	RUBBER RING 23	1
A01	B-20432	RECIPROSAW BLADE 100MM	1 PC.
A02	B-20404	RECIPROSAW BLADE 100MM	1 PC.
A03	783201-2	HEX. WRENCH 3	1 PC.
E01	802D38-3	CAUTION LABEL	1



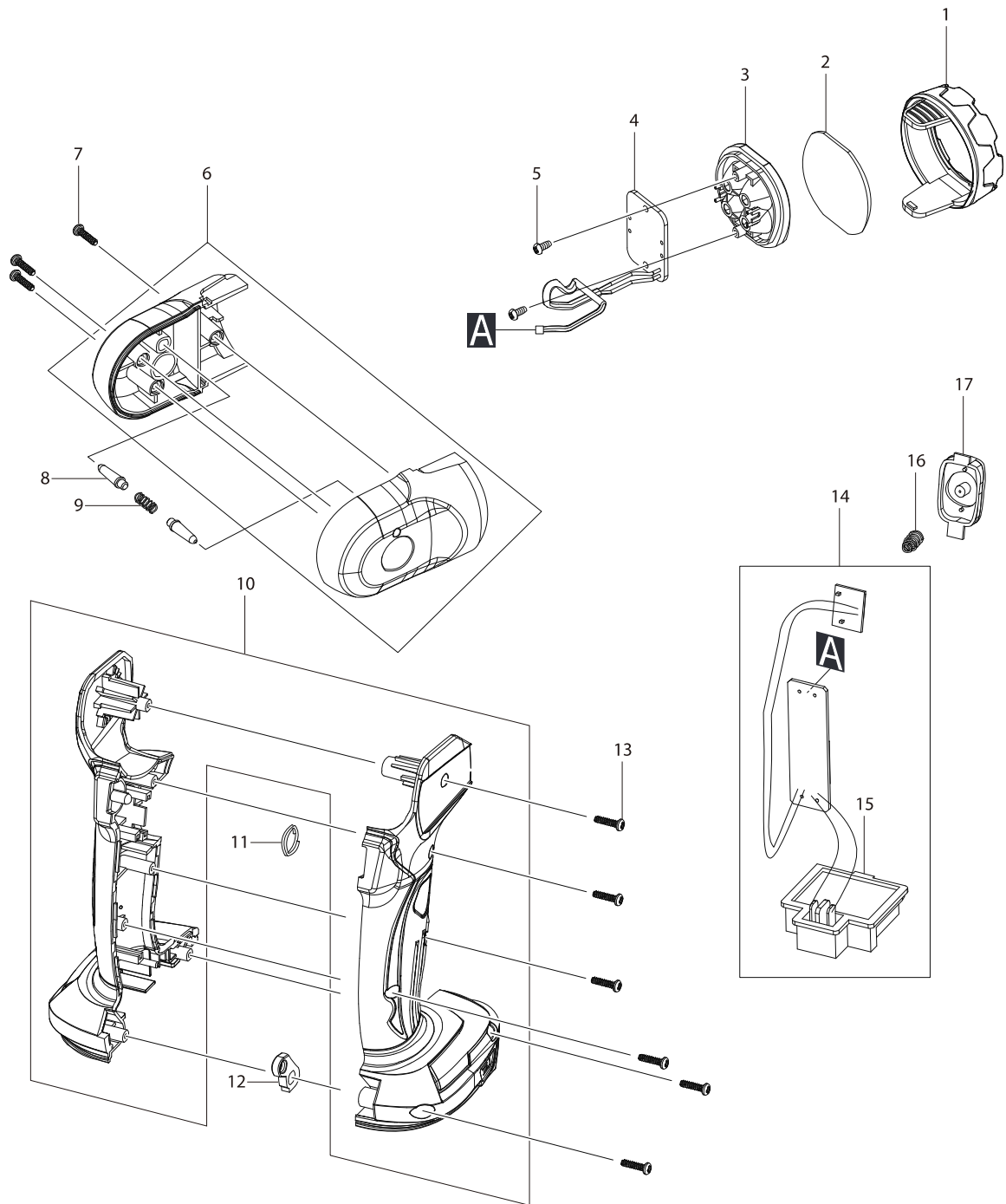
## Model XSS02Z Parts List

A = Standard Equipment

O = Circuit Diagram

Item#	Part#	Description	Q'ty	Unit
001	265995-6	TAPPING SCREW 4X18	5	PC.
002	141472-1	HANDLE COVER COMPLETE	1	PC.
003	651976-0	SWITCH TG73BD	1	PC.
004	231469-9	COMPRESSION SPRING 4	1	PC.
005	419664-3	LOCK OFF LEVER	1	PC.
007	231469-9	COMPRESSION SPRING 4	1	PC.
009	644808-8	TERMINAL	1	PC.
010	419665-1	SWITCH LEVER	1	PC.
011	265995-6	TAPPING SCREW 4X18	2	PC.
012	419281-9	REAR COVER	1	PC.
013	643829-7	HOLDER CAP	2	PC.
014	CB441	CARBON BRUSH CB-441 (195022-4)	1	SET
015	911263-2	PAN HEAD SCREW M5X40	3	PC.
016	643897-0	BRUSH HOLDER	1	PC.
017	643898-8	BRUSH HOLDER	1	PC.
018	815L52-8	XSS02 NAME PLATE	1	
019	142597-4	MOTOR HOUSING COMPLETE	1	
	C10 803K44-3	CAUTION LABEL	1	
020	638571-3	YOKE UNIT	1	PC.
021	419285-1	BAFFLE PLATE	1	PC.
022	266292-3	TAPPING SCREW 4X65	2	PC.
023	210045-2	BALL BEARING 627DDW	1	PC.
024	510095-0	ARMATURE ASS'Y 18V	1	PC.
	D10	INC. 23,25,26		
025	241869-5	FAN 55	1	PC.
026	211061-7	BALL BEARING 6000LLB	1	PC.
027	346059-6	SHAFT LOCK	1	PC.
028	233092-6	COMPRESSION SPRING 5	1	PC.
031	142596-6	BLADE CASE COMPLETE	1	
	C10 213434-0	O RING 26	1	PC.
	C20 802U29-6	CAUTION LABEL	1	
033	262049-0	RUBBER RING 6	1	PC.
034	251368-9	+ COUNTERSUNK SCREW M6	1	PC.
035	210028-2	BALL BEARING 606ZZ	1	PC.
036	961052-5	RETAINING RING S-12	1	PC.
037	227156-6	SPUR GEAR 52	1	PC.
038	257173-2	RING 12	1	PC.
039	213512-6	O RING 39	1	PC.
040	265034-2	+ COUNTERSUNK HEAD SCREW M5X16	2	PC.
041	318009-1	BEARING BOX	1	PC.
042	210109-2	BALL BEARING 6001DDW	1	PC.
043	324626-7	SPINDLE	1	PC.
044	285845-9	BEARING RETAINER 19-29	1	PC.
045	345469-4	THICKNESS RING	1	PC.
046	231821-1	TENSION SPRING 3	1	PC.
047	419280-1	SAFETY COVER	1	PC.
048	961152-1	RETAINING RING (EXT) S-34	1	PC.
049	224411-7	INNER FLANGE 35	1	PC.
050	224409-4	OUTER FLANGE 35	1	PC.
051	266133-3	HEX. SOCKET HEAD BOLT M6X20	1	PC.

056	961014-3	STOP RING E-8	1 PC.
057	272229-0	LEVER 40	1 PC.
058	252158-3	HEX.NUT M6	1 PC.
059	941151-9	FLAT WASHER 6	1 PC.
060	345658-1	DEPTH GUIDE	1 PC.
061	252103-8	HEX. LOCK NUT M5-8	1 PC.
062	345657-3	ANGULAR GUIDE	1 PC.
065	265056-2	+ PAN HEAD SCREW M5	1 PC.
066	266194-3	FLAT HEAD SCREW M6X90	1 PC.
067	256480-0	SHOULDER PIN 6-7	1 PC.
068	256480-0	SHOULDER PIN 6-7	1 PC.
069	266264-8	H.S.SET SCREW(FLAT POINT)M5X6	1 PC.
070	251919-8	CAP SQUARE NECK BOLT M6X20	1 PC.
071	231007-7	COMPRESSION SPRING 6	1 PC.
072	251896-4	SCREW M5X20	1 PC.
073	941151-9	FLAT WASHER 6	1 PC.
076	252133-9	HEX. NUT M6	1 PC.
077	961014-3	STOP RING E-8	1 PC.
078	272251-7	LEVER 30	1 PC.
079	266264-8	H.S.SET SCREW(FLAT POINT)M5X6	1 PC.
081	154831-0	BASE COMPLETE	1 PC.
082	266229-0	H.S.SET SCREW(CUP POINT)M5X8	1 PC.
085	253186-1	FLAT WASHER 7	1 PC.
A01	164095-8	GUIDE RULE	1 PC.
A05	783203-8	HEX. WRENCH 5	1 PC.
A08-1	A-96023	T.C.T SAW BLADE 165X15.88X16T	1 PC.
E01	620259-9	CONTROLLER	1



## Model DML815/B Parts List

A = Standard Equipment

O = Circuit Diagram

Item#	Part#	Description	Q'ty	Unit
001	GM00001299	BEZEL(C1720802002)	1	PC.
002	GM00001298	LENS(C1720802001)	1	PC.
003	GM00002074	REFLECTOR	1	
004	GM00002075	LED PCBA ASSY	1	
005	GM00001332	SCREW 3 X 8 PB B0130080702	2	PC.
006	GM00002076	HEAD HOUSING ASSY	1	(DML815)
	GM00002079	HEAD HOUSING ASSY BLACK	1	(DML815B)
007	GM00001333	SCREW 3 X 12PB B0130120702	3	PC.
008	GM00001295	LOCKING SHAFT(C4120802001)	2	PC.
009	GM00001294	COMPRESSION SPRING B1303802922	1	PC.
010	GM00001303	HOUSING L/R(G0180200400)	1	SET (DML815)
	GM00002072	HOUSING L/R SET BLACK	1	SET (DML815B)
011	GM00001292	RING (B3103184009)	1	PC.
012	GM00001290	HOOK PLATE(B2804802921)	1	PC.
013	GM00001333	SCREW 3 X 12PB B0130120702	6	PC.
014	GM00002078	MAIN PCBA ASSY	1	
	D10	INC. 15		
015	GM00001117	BATTERY HOLDER C2010239007	1	PC.
016	GM00002077	SPRING	1	
017	GM00001291	SWITCH COVER(G0180200200)	1	PC.
A01	GM00001289	HOOK BAND SET(G0180200100)	1	PC.