



AF FORDABLE INNOVATION

Cellular Cordless Shade

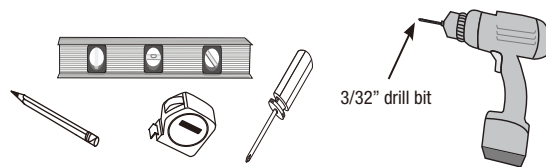
Achim's family of Home Furnishings thanks you for your most recent purchase. We are confident this product will bring you years of pleasure and enjoyment !

Instructions for Installation, Operation and Cleaning

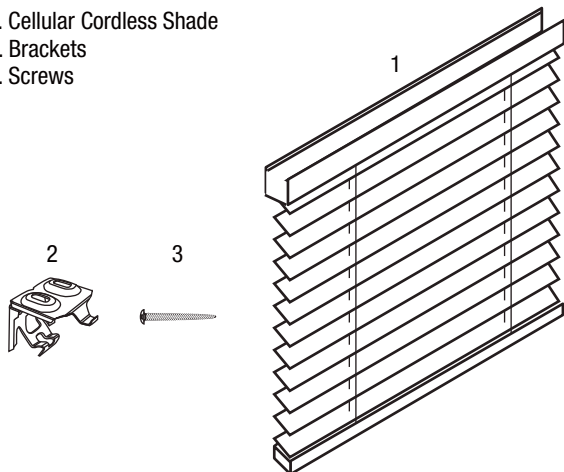
Congratulations on your Intercrown™ cellular cordless shade purchase! You can take pride and comfort in knowing that your new shade will be easy to install, will add to your home's beauty, and will perform to your expectations. Before beginning installation, please take a moment to review the following instructions and safety warnings.



Tools Needed



1. Cellular Cordless Shade
2. Brackets
3. Screws



IMPORTANT SAFETY INFORMATION:

Read all instructions , warning tags, and labels provided with your product to avoid injury. Keep this manual.

Please contact our Customer Service Center at the phone number, email or address below for additional support.

For additional safety tips visit the Home Safety Council at www.homesafety.org.

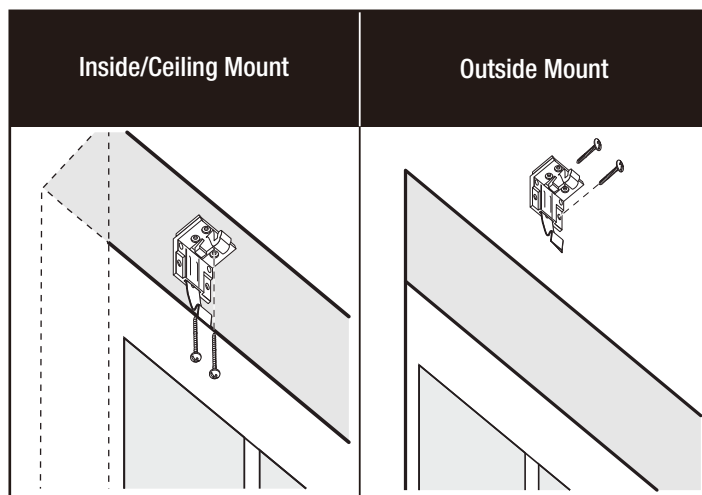


If you have any questions regarding installation please call Achim's Customer Service at 1800-54-ACHIM www.achimonline.com

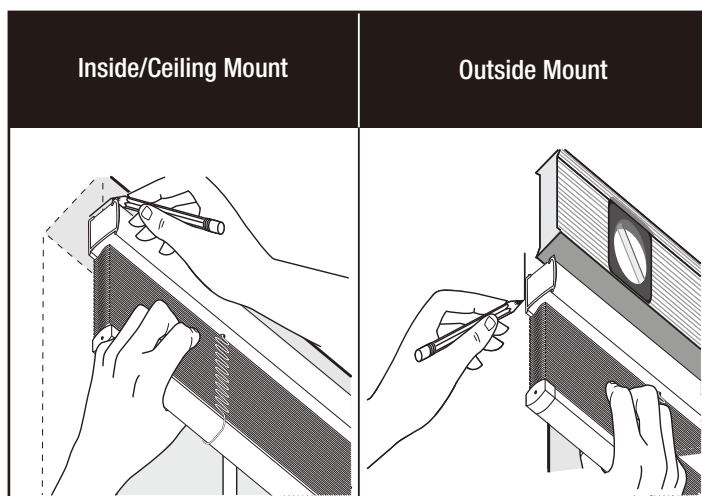
07142014

Installation Instructions

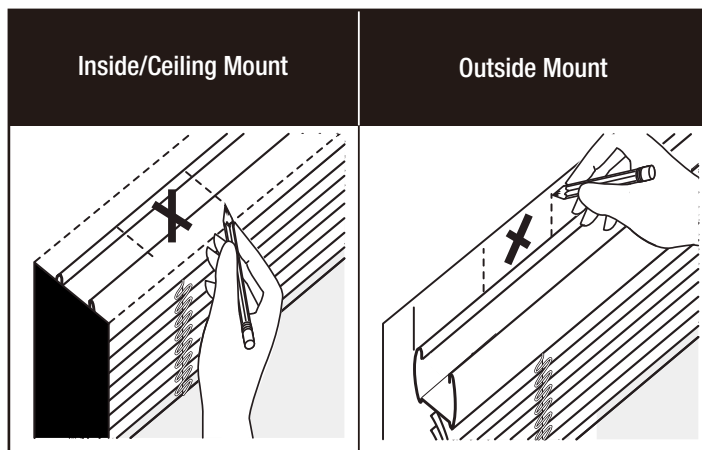
1. Determine inside/ceiling or outside mount



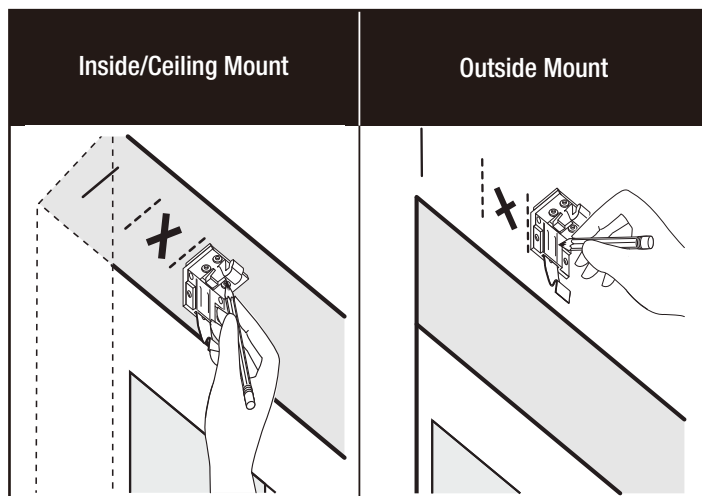
2. Place shade in desired location and mark corners.



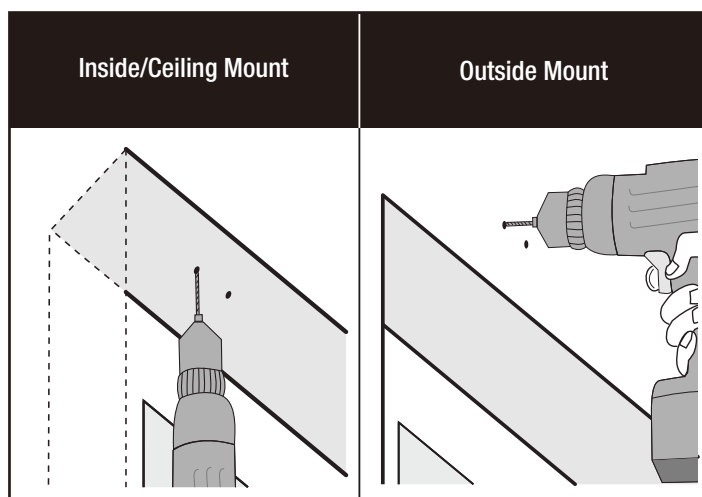
3. Tilt shade forward and mark location of internal components. For proper operation of the shade, brackets must be outside of this area.



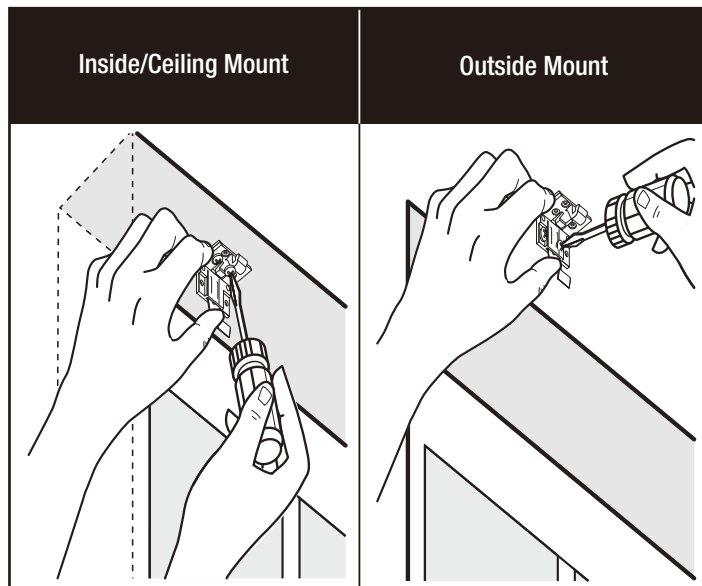
4. Mark screw locations. Align edge of bracket with inside or outside of marks made in step 3, ensuring to avoid the "X."



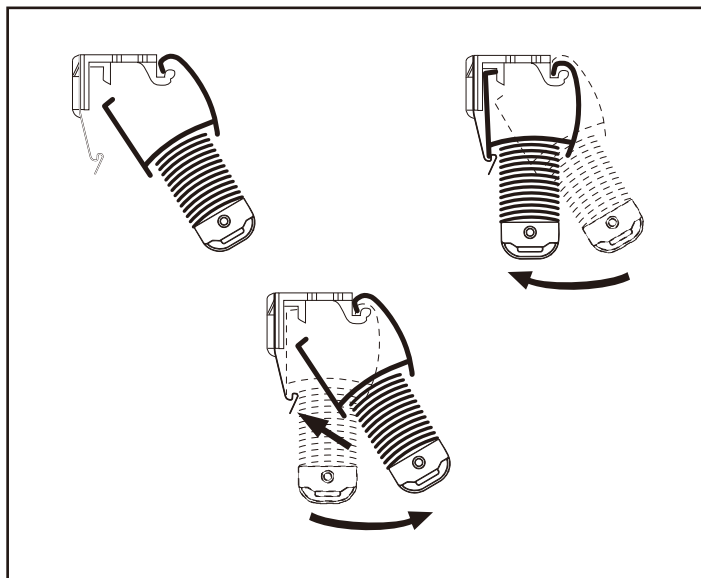
5. Drill holes.



6. Screw brackets into place.



7. Mount shade in brackets.



Operation Instructions

TO BRING SHADE DOWN TO WINDOW SILL:

Pull shade down to the window sill using the center of the bottom rail.

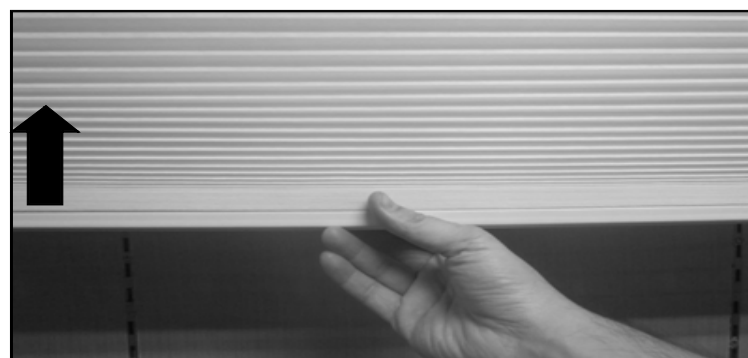
Tip: You may pull shade all the way down to the window sill or stop at any desired height.



TO FULLY OPEN SHADE:

Push shade up using the center of the bottom rail.

Tip: You may fully open shade to top of window or stop at any desired height.



TIP:

You can always move shade up and down at any time.

TO CLEAN SHADE

Dust gently with clean, damp non-abrasive cloth.

NOTE:

This shade cannot be shortened. Altering the length of this shade will compromise the function and shall void the warranty.



If you have any questions regarding installation please call Achim's Customer Service at 1800-54-ACHIM www.achimonline.com

07142014

ACHIM'S CONTACT

If you have any questions regarding installation please call Achim's Customer Service at 1800-54-ACHIM
www.achimonline.com

