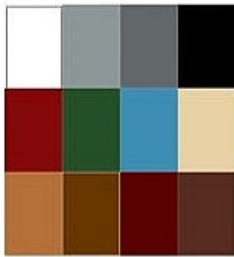


OIL BASE ENAMEL

For Interior



*Recommended Primer

DIAMOND BRITE®

What you will need: Preparation



Application choice of:



Your checklist:

- Spackle paste
- Scrapper
- Fine-grit sandpaper
- Cleaning cloth
- Trisodium Phosphate (TSP) Cleaner
- Sponge
- Painter's tape
- Tarp
- Paint stir stick
- choice of:
Paint sprayer/ roller brush/ sash
(angled) brush/ paint brush

OIL BASE ENAMEL

**DIAMOND
BRITE®**

How To:

Step 1 Prepare The Surface

Paint must be applied onto a clean, smooth, dry surface. Oil based paint can be used on wood, concrete, plaster, masonry, hardboard, and metal surfaces. It is common that oil based paints used in exterior settings will crack and start to peel, after many years of change of weather.

1. Using a scraper, remove loose sections of old paint that have peeled. Painting over peeled paint will not give the job a new fresh look. This is the most important step of oil paint preparation. On a concrete or metal surface a hand wire brush or a wire wheel on an electric drill can be used to remove old peeling paint. Then, sand smooth using fine-grit sandpaper.
2. Using clear fresh water and a rag or sponge to clean surface of any dust, dirt, grease, etc. Do not use house-hold cleaners. Instead, use TSP (Trisodium Phosphate) as a cleaning agent, and be certain to do an excellent job of removing TSP residual with clean cold water.
3. Do not use TSP on concrete or metal surfaces to clean.
4. On concrete only, the following procedure must be completed before painting or the painter is taking a risk that the new paint will not stick to the concrete. Clean the surface using a solution of muriatic acid. In a 5 gallon pail mix 4 gallons of clean water with one gallon muriatic acid. Using a new mop, mop the entire surface and then using a garden hose, completely hose off the muriatic acid solution, and let dry.
5. Shield surfaces you do not want to paint. Use painter's tape around doors, windows, trim, and a tarp to cover floor, furniture, etc. that you want to be paint free.
6. **Diamond Brite Industrial Oil Alkyd Primer (#31900)** or similar is required on new metal surfaces for rust protection. On other surfaces, a second coat of paint is preferred over an oil-primer. The purpose of a primer-sealer is to prepare the surface, seal the surface, and leave the surface ready to accept paint. Properly primed and sealed, the wall will be painted with less paint.

Step 2 Mix The Paint!

1. NEVER thin oil based paints. Use the paint **as is**, straight out of the can.
2. Use a stir stick to mix the paint until the bottom of the can feels smooth and loose. To the human eye, the paint color should appear to be mixed in.
3. Do not use an electric drill. In oil based paints, an electric drill creates air bubbles. Later the air bubbles will show up when the paint has dried. Thus, the surface will not be a smooth surface when dried. Again, **ONLY HAND STIR OIL PAINTS.**



OIL BASE ENAMEL



How To continued:

Step 3 Apply

1. The paint is blended to be applied using a brush, a paint roller, or a paint sprayer (without thinning). Tip: paint rollers are sold in 5 different thicknesses. The rule is:
 - smoother walls: use 1/4 in., 3/8 in., 1/2 in. (always safe with 1/2 in.)
 - rougher surfaces: use 3/4 in. or 1 1/4 in.
2. It is recommended that you paint the large areas with a paint roller or a 3 in. or 4 in. paintbrush and it is best to use a sash (angled) brush around trim, doors windows and corners.
3. Oil based paints usually require two coats, and sometimes two coats is necessary to cover a previously painted surface.
4. It is best to purchase premium grade applicators when applying oil-based paints (brushes, roller covers).
5. When using a paint sprayer, only use commercial grade spray equipment. Household sprayers do not have the power to properly spray oil based paints. A commercial sprayer can be rented at paint stores, big box stores, and some hardware stores.
6. When brushing or using a paint roller, be certain to load the brush or paint roller with a lot of paint. Do not apply too light of a coat. The paint will self level as it dries.
7. For oil based paint to dry, the temperature must be 60 degrees fahrenheit or greater.
8. The expected dry time per coat will be 8-12 hours depending upon temperature or humidity, per coat.