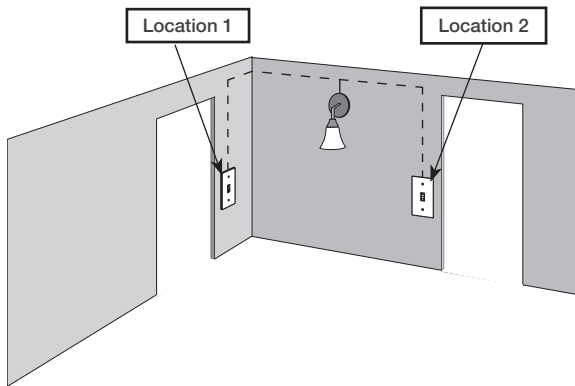


1 Identify existing wiring



Two switches control the lights (3-way installation)

Important note:

- If one switch controls the lights (single-pole installation) See quick-start guide that came with your in-wall dimmer
- If three or more switches control the lights (multi-location installation) See [page 36](#) for details

2 What you need for a 3-way installation



In-wall dimmer
PD-6WCL



Claro Wallplate
CW-1

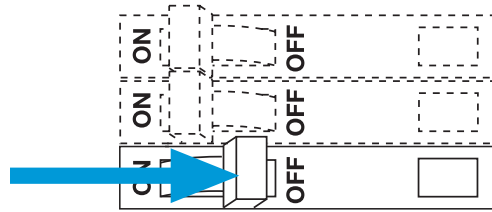


Pico remote control
with wall-mounting kit
PJ2-WALL

3 Choose a location for your Caséta Wireless in-wall dimmer

Choose which location you want the Caséta Wireless in-wall dimmer installed in. **This will be Location 1.**

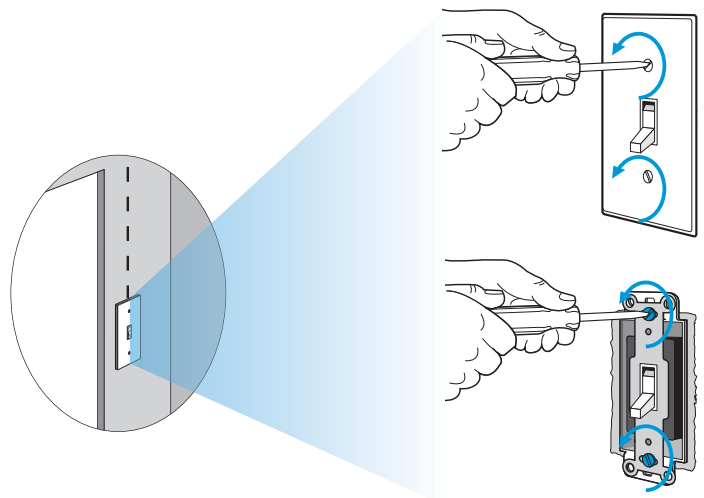
4 Turn power off at circuit breaker



WARNING! Shock Hazard. May result in serious injury or death. Turn off power at circuit breaker before installing the unit.

5 Remove existing switch from wall

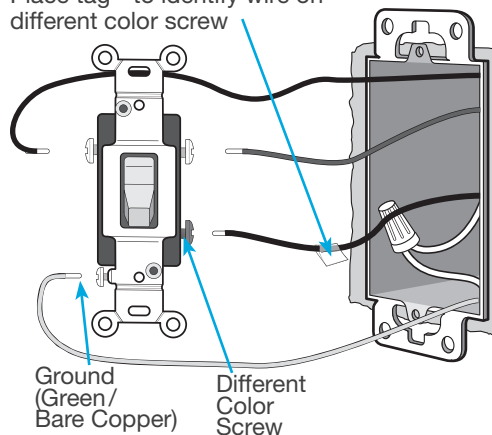
Location 1



6 Tag and disconnect wires from the existing switch

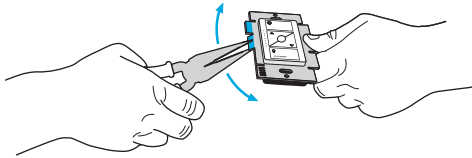
Location 1

Place tag - to identify wire on different color screw

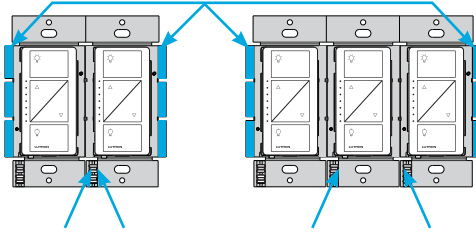


7 Remove side sections (if necessary)

When installing more than one Caséta Wireless in-wall dimmer in the same wallbox, it is necessary to remove inner side sections prior to wiring. See image and chart below for more information.



Do not remove outside side sections on dimmers at the end of gang.



Each in-wall dimmer has inside side sections removed.

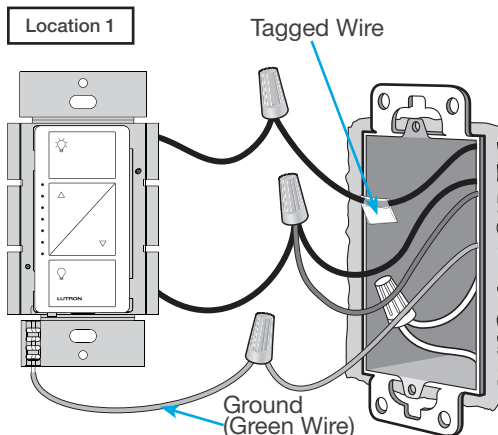
Dimmer in the middle has all side sections removed.

Important note:

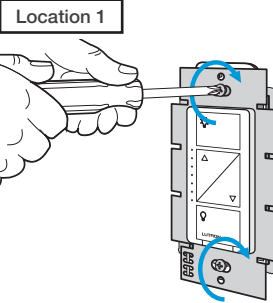
Removing side sections reduces the in-wall dimmer's maximum wattage rating. See the chart below for maximum wattage information.

Total Dimmable LED Wattage	Incandescent/Halogen Total Wattage		
	A	B	C
0 W	+ 600 W	500 W	400 W
1 W – 25 W	+ 500 W	400 W	300 W
26 W – 50 W	+ 400 W	300 W	200 W
51 W – 75 W	+ 300 W	200 W	100 W
76 W – 100 W	+ 200 W	100 W	50 W
101 W – 125 W	+ 100 W	50 W	0 W
126 W – 150 W	+ 0 W	0 W	0 W

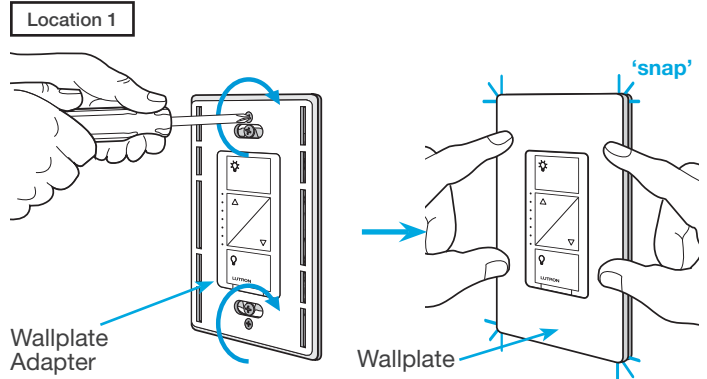
8 Connect the Caséta Wireless in-wall dimmer



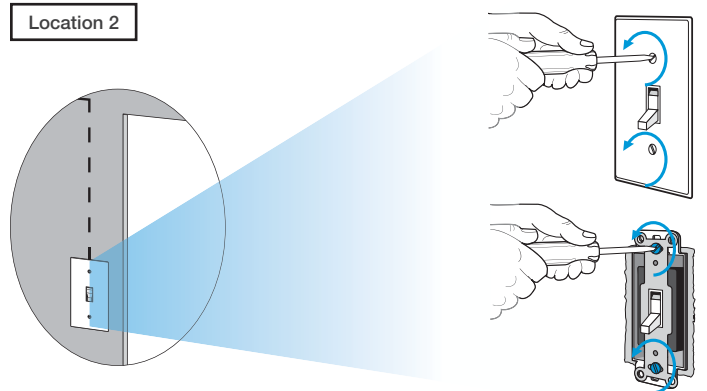
9 Mount the Caséta Wireless in-wall dimmer



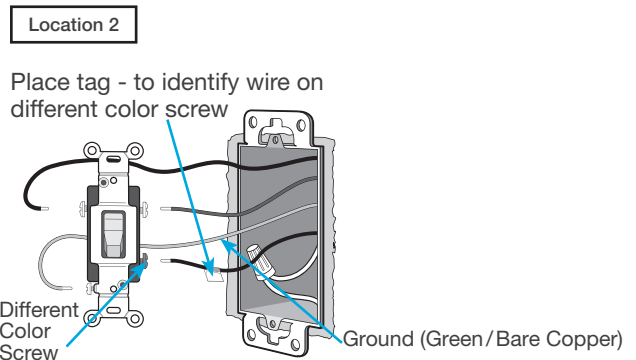
10 Attach the wallplate



11 Remove existing switch from wall at Location 2

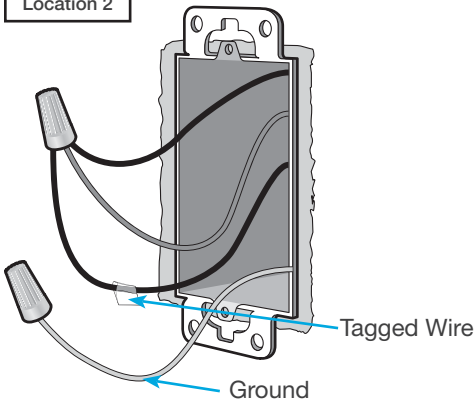


12 Tag and disconnect wires from the switch



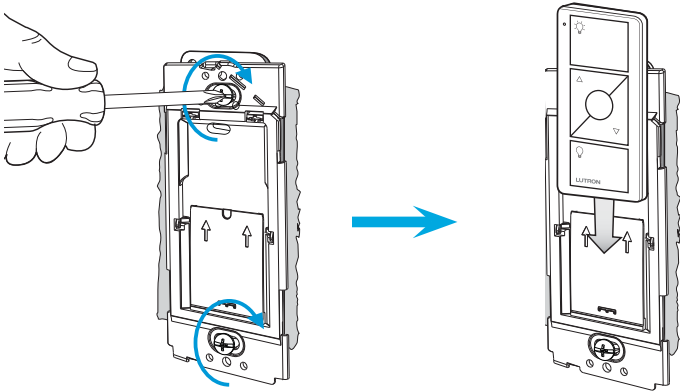
13 Connect the wires

Location 2



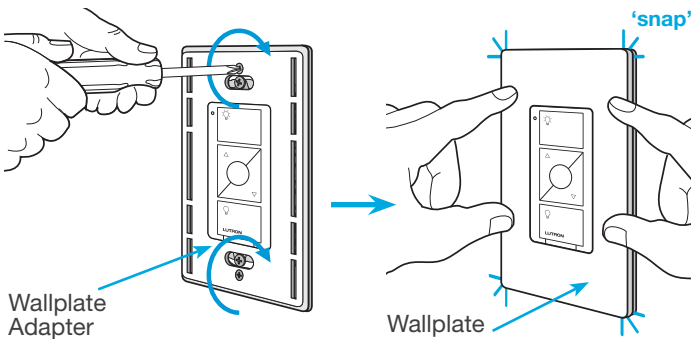
14 Attach the wallplate bracket and Pico remote control

Location 2

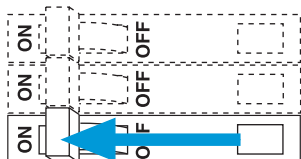


15 Attach the wallplate

Location 2



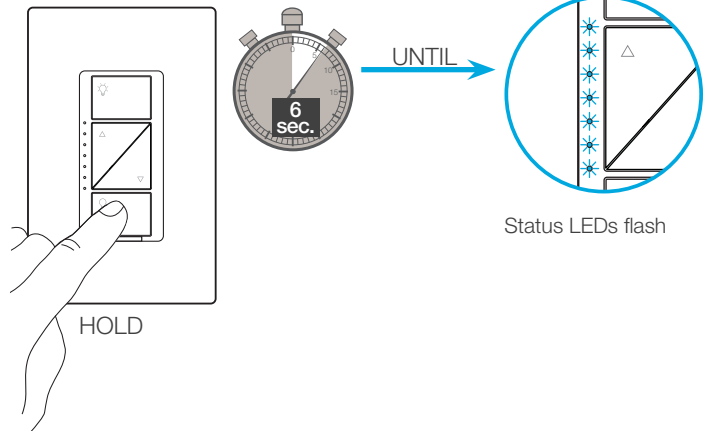
16 Turn power on at circuit breaker



Pairing the in-wall dimmer and Pico remote control

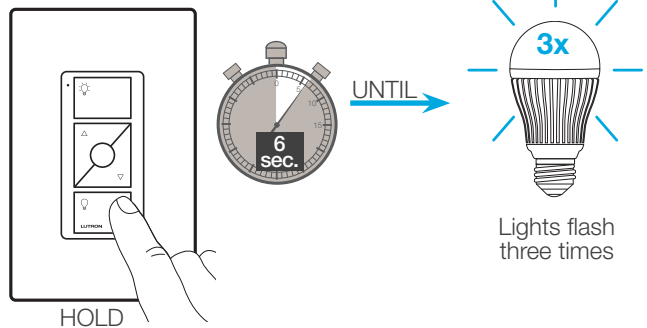
17 Press and hold "Off" button on in-wall dimmer

Location 1



18 Press and hold "Off" button on remote control

Location 2



19 Pair additional remote controls

Repeat steps 17 and 18 to pair additional remote controls.

Schematic Diagram

