



Please **read these instructions** carefully before beginning. You may want to **watch the instructional video** online at [gilafilms.com](http://gilafilms.com) for a thorough demonstration. We recommend practicing the steps with a small piece of film or on a smaller window. Application is easier with two people, especially on larger windows.

### Tools Needed

(Sold in GILA Tool Kit)

- GILA® Window Film Application Solution – Ready to use for cleaning and application. Do not dilute or mix with water.
- Squeegee and squeegee card – For smoothing the film
- Utility knife – For trimming the film
- GILA Edging Tool – To ensure a clean edge
- Low-lint cloth – For cleaning the film and the glass

(Household items)

- Single-edged razor blade – For cleaning the glass
- Ruler or tape measure
- Transparent tape
- Scissors

## 1. CLEAN WINDOW

Generously spray the window with the Application Solution, use a razor blade to remove stubborn dirt or paint. Use special care cleaning the corners. Re-wet the window, then squeegee downward. Wipe off accumulated dirt from the window gasket with a soft cloth. If possible, clean the outside of the window for the best clarity.

### Hint!

*Greasy or smoke-covered windows can be cleaned first with glass cleaner then rinsed thoroughly with the Application Solution. Apply film to cool shaded windows when glass temperature is between 45-90°F. For best results, do not apply in direct sunlight or freezing weather.*

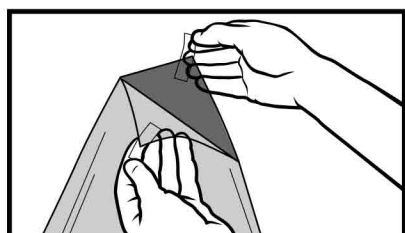
## 2. MEASURE AND CUT FILM

Unroll the film on a clean, flat surface. Carefully measure your window before cutting. Cut the film at least an inch larger than the glass on all four sides. The excess will be trimmed once film is applied.

### Hint!

*Try to use at least one of the factory edges. Work in a dust-free area. Turn off fans.*

## 3. IDENTIFY CLEAR LINER



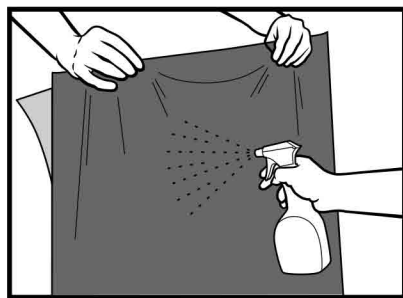
Leaving the film on a clean, flat surface, select one corner of the film and attach two small pieces of transparent

tape (3-4 inches) to each side – one on the film and one the liner. Leave some tape hanging over the corner of the film (about 1 inch). Press the two pieces of tape firmly together, then quickly pull them apart to begin separating the clear liner away from the film. You have identified the liner! Leave the tape in place and move to the next step.

### Hint!

*Usually the liner is on the outside surface of the film roll. You may want to fold the ends of the tape over themselves to keep the two pieces of tape from sticking together.*

## 4. WET WINDOW AND FILM

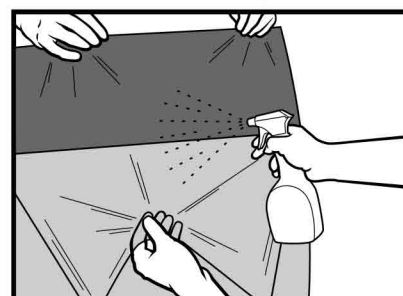


Lightly spray the Application Solution onto the inside surface of the window and both sides of the film. This helps reduce film curl and static electricity.

### Hint!

*Have a helper hold the film by the edges while you spray. Flip the film over and repeat on the other side.*

## 5. REMOVE CLEAR LINER



Peel the two strips of tape apart to release the liner from the corner. As you begin to pull away the liner, spray the smooth side of the film with the Application Solution until the clear liner is removed and the smooth side is completely saturated. Try to keep the film from touching itself.

### Hint!

*Have a helper hold the film while you peel the clear liner away and spray the smooth side of the film. Handle the film very carefully to prevent creasing.*

## 6. APPLY FILM TO GLASS

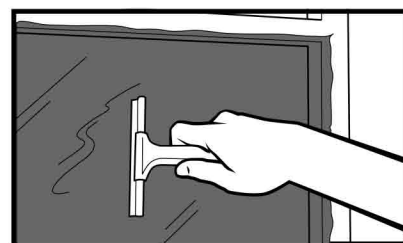


Hold the film so that the smooth side is facing the window and apply to the glass. Use your hands to smooth the film out and position it so that the excess 1" is overlapping the window on all four sides.

### Hint!

*If you're using a factory edge, line that up to the window edge. For larger pieces of film, leave some of the liner on the film while you apply it to the glass. Once the film is in place, remove the liner completely.*

## 7. SMOOTH FILM

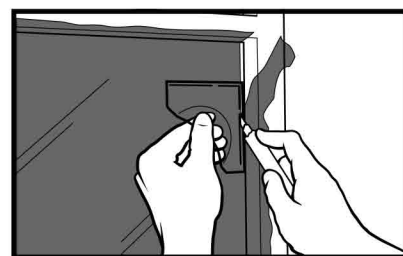


Spray the entire surface of the film facing you with the Application Solution. Wrap your squeegee with a low-lint cloth. Lightly squeegee the centerline of the film from top to bottom to set it in place. Begin smoothing the film, starting at the top of the window. Squeegee from the center to the right side and work downward, leaving a 2" perimeter around the edges unsqueegeed. Repeat this process for the left side

### Hint!

*If "fingers," or longer, larger bubbles, appear along any edge, wrap your squeegee with a low-lint cloth and carefully push the "fingers" toward the edge of the film. The cloth will absorb the excess water. The hard card squeegee works great for this.*

## 8. TRIM FILM



The GILA Edging Tool has a small slit along the edge. Place the utility knife in this slit and line knife and Edging Tool up to a top corner edge of the window. Slowly and firmly, pull the knife and Edging Tool down the window to trim the film. Re-position the knife and tools to get the corners. Gently pull the trimmed film away from the window. Repeat this process on all four edges of the film.

### Hint!

*The GILA Edging Tool leaves a 1/16" gap between the film and the edge of the window, this gap is essential for the proper thermal expansion of the glass. Use a new blade after every 10 feet of film you cut. Cutting film causes the blade to dull quickly, which can tear the film.*

## 9. SQUEEGEE DRY

Rewet the film and squeegee from the center to the right side, working from the top down.

Repeat this process for the left side. Press firmly to remove all the water so that the film can cure clearly. If air bubbles are present, squeegee them out. Any remaining small water bubbles should evaporate as the film cures.

### Hint!

#### CORRECTING MISTAKES:

*You may notice imperfections such as air bubbles or debris between the film and the glass. Simply peel the affected area of the film away from the glass. Use the tip of your utility knife or squeegee to remove any debris or bubble. Re-spray the film and the glass with the Solution and re-apply to the glass.*

## 10. ENJOY THE VIEW!

Great work. You have successfully applied your GILA Window Film. The film will fully "cure" over the next 7 to 10 days. Dry, sunny weather speeds curing. Any remaining small bubbles should disappear during this time.

### CAUTION:

Do not apply GILA residential films to motor vehicle windows. For information on products designed for these applications, visit [gilafilms.com](http://gilafilms.com). Do not apply any film to frosted, etched, leaded, cracked, holed, or deeply scratched glass, or any otherwise flawed or defective glass or glass that is more than 40 years old.

### CONSUMER SUPPORT:

For additional technical support or product inquiries, please write, call, or go online:

#### GILA Film Products

Attn: GILA Customer Service Manager  
575 Maryville Centre Drive  
Saint Louis, MO 63141  
Consumer Service Hotline: 1-800-528-4481  
web: [www.gilafilms.com](http://www.gilafilms.com) • [gilahelp@cpfilms.com](mailto:gilahelp@cpfilms.com)

### GILA® WINDOW FILM LIMITED WARRANTY:

GILA® window films are warranted against manufacturing defects for a period of two years from the date of original purchase. If any product fails to conform to the foregoing limited warranty, and the purchaser submits a valid warranty claim during the warranty period set forth above, the purchaser may be eligible for replacement product at no charge. Original proof of purchase and an explanation of the manufacturing defect will be required to substantiate any warranty claim. It is therefore recommended that the purchaser retain the sales receipt. In addition, we reserve the right to request samples of the defective window film to substantiate any warranty claim.

GILA window films are also warranted against failure of the glass due to seal failure for a period of two years from the date of original purchase provided the multi-paned insulated window is currently covered by the original window manufacturer warranty. Purchaser must provide proof of an existing window manufacturer's warranty. GILA window films are also warranted against glass breakage as a result of solar heat absorption for a period of two years from the date of original purchase of such films. The replacement cost is limited to a value of up to \$500 (USD) per glass window caused solely as a direct result of the application of GILA residential window film.

The limited warranty coverage herein is made solely to the original purchaser of GILA window films and may not be transferred.

CPFilms' obligations to the purchaser, whether such claim is based in contract, negligence, tort or otherwise, shall be solely as provided herein and damages and remedies shall be solely as provided hereunder. In no event shall CPFilms be liable for installation costs of replacement film or for removing the defective film.

This limited warranty is void if the film is subject to abuse or improper care. CPFilms assumes no liability for scratching or damaging of the film caused by or relating to improper installation, treatment or cleaning.

EXCEPT AS PROHIBITED BY APPLICABLE LAW, CPFILMS HEREBY DISCLAIMS LIABILITY FOR ANY INDIRECT, INCIDENTAL, SPECIAL, CONSEQUENTIAL OR PUNITIVE DAMAGES ARISING FROM ANY CAUSE WHATSOEVER. EXCEPT AS EXPRESSLY PROVIDED HEREIN, CPFILMS HEREBY EXCLUDES AND DISCLAIMS ANY AND ALL EXPRESS WARRANTIES AND, EXCEPT DURING THE WARRANTY PERIOD SET FORTH ABOVE, ALSO EXCLUDES AND DISCLAIMS ANY AND ALL IMPLIED WARRANTIES, INCLUDING THE IMPLIED WARRANTIES OF MERCHANTABILITY AND FITNESS FOR A PARTICULAR PURPOSE.

Some States/Provinces do not allow the exclusion or limitation of incidental or consequential damages or limitations on how long an implied warranty lasts, so the above limitations or exclusions may not apply to you. This warranty gives you specific legal rights and you may also have other rights which may vary from State/Province to State/Province.

### HOW TO RECEIVE WARRANTY SERVICE:

If you believe your GILA product is defective, please contact 1-800-528-4481 to request a warranty form. Send this form along with the UPC code from the original packaging and a legible copy of your original receipt that includes the retailer name and address, date of purchase, and mail postage paid, to

CPFilms Inc.  
Attn: GILA Warranty Service  
575 Maryville Centre Drive  
St. Louis, MO 63141

If your GILA product is covered by this limited warranty, CPFilms will mail you replacement film. If your GILA product is not covered by this limited warranty, CPFilms will notify you of its decision in writing.

Please refer to [gilafilms.com](http://gilafilms.com) for the most current updates on cleaning and care, removal, large windows and intended use.

50167618

GILA® is a registered trademark of Eastman Chemical Company or one of its wholly owned subsidiaries. 01/2015