

EASY ASSEMBLY AND OPERATION INSTRUCTIONS

21SV22741 King of the Underworld

USA/ États-Unis 000000000
Canada 000000000
YOW 000000000



Please follow the step by step guide and enjoy your King of the Underworld!

WARNING

This item is not a toy and should be used for decoration only. This item contains small parts that can be a choking hazard. Keep all plastic and wire parts away from children.

1. Please use the adapter supplied by manufacturer.
2. Please assemble item according to instructions. Connect all wires according to matching color.
3. Children should be supervised by adults. Item should not be grabbed, as it becomes a tipping hazard. Keep flammables away from the adapter, as it heats up during operation.

CARE AND STORAGE INSTRUCTIONS

For best performance operate your item indoors. When not in use, store this product in its original packing. Keep away from heat and moisture.

Please view all instructions carefully before assembling. Save this instruction sheet for future reference.

TROUBLESHOOTING:

- Ensure that the item's adapter is plugged in at the Function Control Box and in the wall.
- Ensure that the switch on the function control box is on the desired setting.
- If not functioning properly (ex: Mouth doesn't move, eyes don't light up), ensure that cables are connected to their corresponding cable as shown in the instruction sheet.
- Be sure nothing is blocking movement or caught in moving parts.
- Ensure that the floor or surface that the item sits on is flat and level.
- Be sure nothing is blocking the sensor.
- Ensure that the volume is not all the way down.
- If item still does not work, call 1-877-527-0313 for customer service.

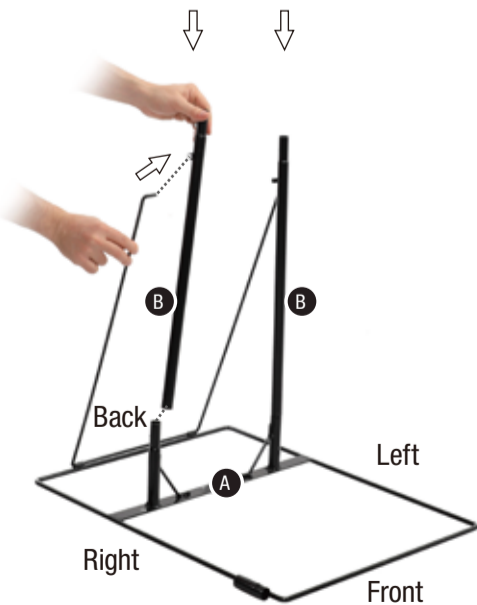
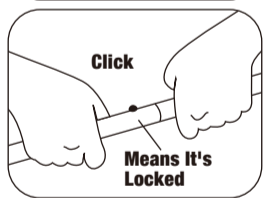
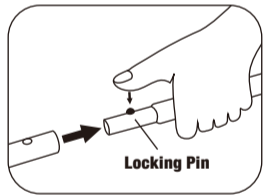
PARTS LIST

- A. Base x 1
 - B. Lower Support Pole x 2
 - C. Upper Support Pole x 2
 - D. Torso Frame x 1
 - E. Costume x 1
 - F. Left Arm x 1
 - G. Left Hand x 1
 - H. Lower Staff Pole x 1
 - I. Staff Pole x 1
 - J. Lower Staff x 1
 - K. Middle Staff x 1
 - L. Upper Staff x 1
 - M. Right Arm and Staff x 1
 - N. Head x 1
 - O. Cape x 1
 - P. Crown x 1
 - Q. Adapter * x 1
- * Power Adapter Spec
Input: 100 - 240VAC 50/60Hz
Output: 5.9V 1.5A

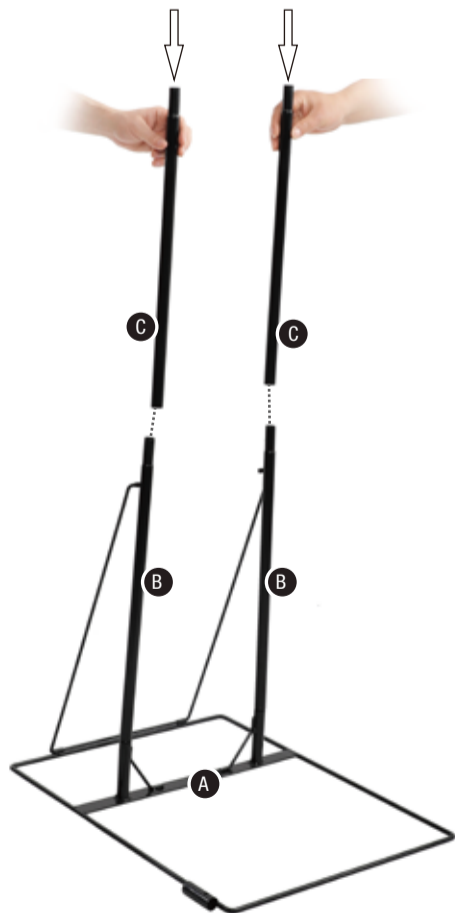


BEFORE ASSEMBLING, REMOVE ALL THE ABOVE PARTS FROM BOX. IF ANY PART IS MISSING OR BROKEN, DO NOT ATTEMPT TO ASSEMBLE THE PRODUCT AND CONTACT CUSTOMER SERVICE FROM 8:30AM TO 5:30PM PST AT 1-877-527-0313, 1-855-428-3921. EMAIL CUSTOMERSERVICE@SVIUS.COM.

Note: Throughout the instructions, Right and Left are relative to the character.



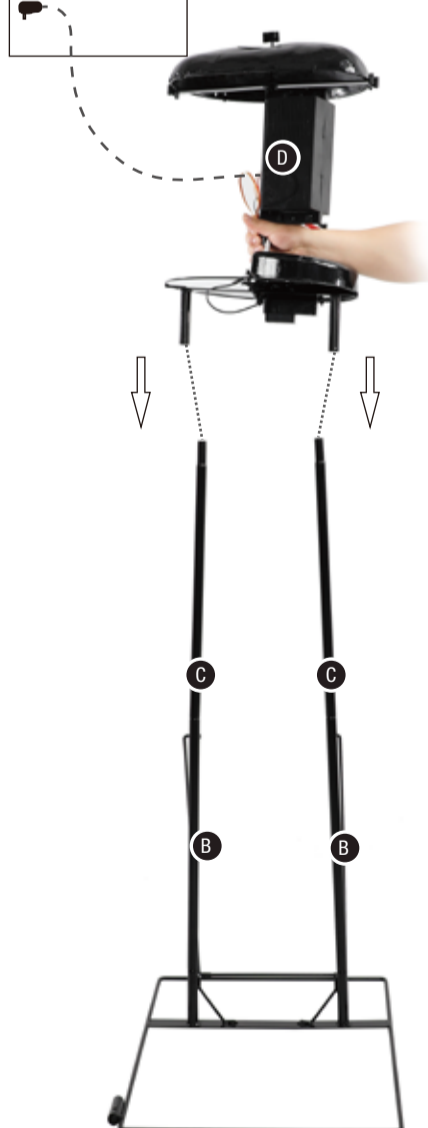
1.1



1.2

Plug the adapter into the Function Control Box.

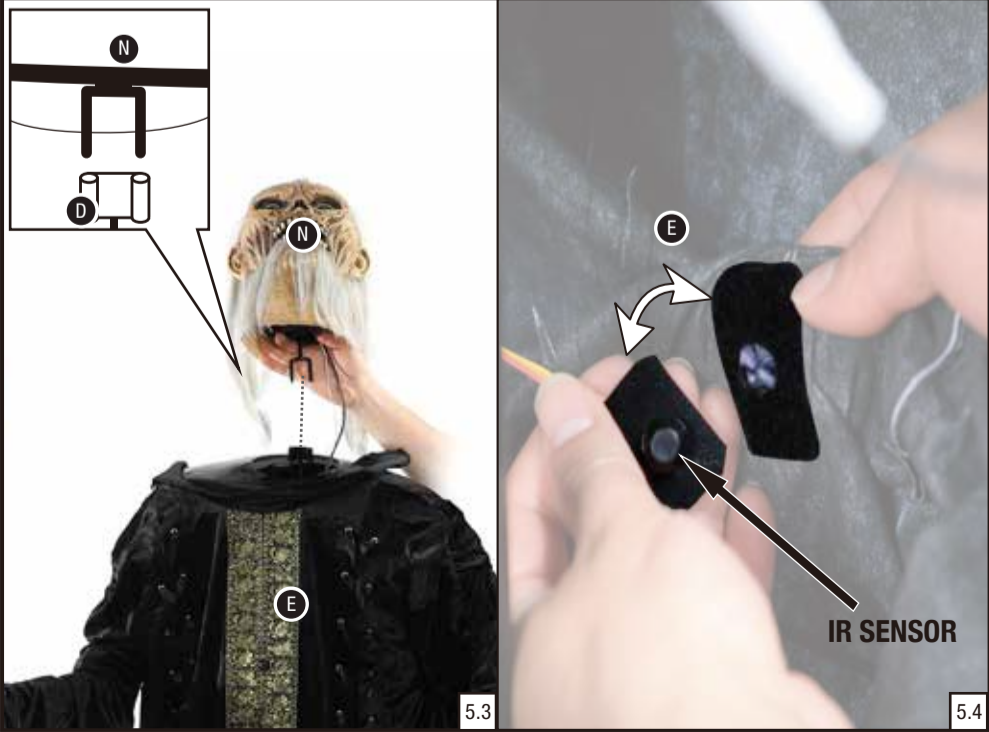
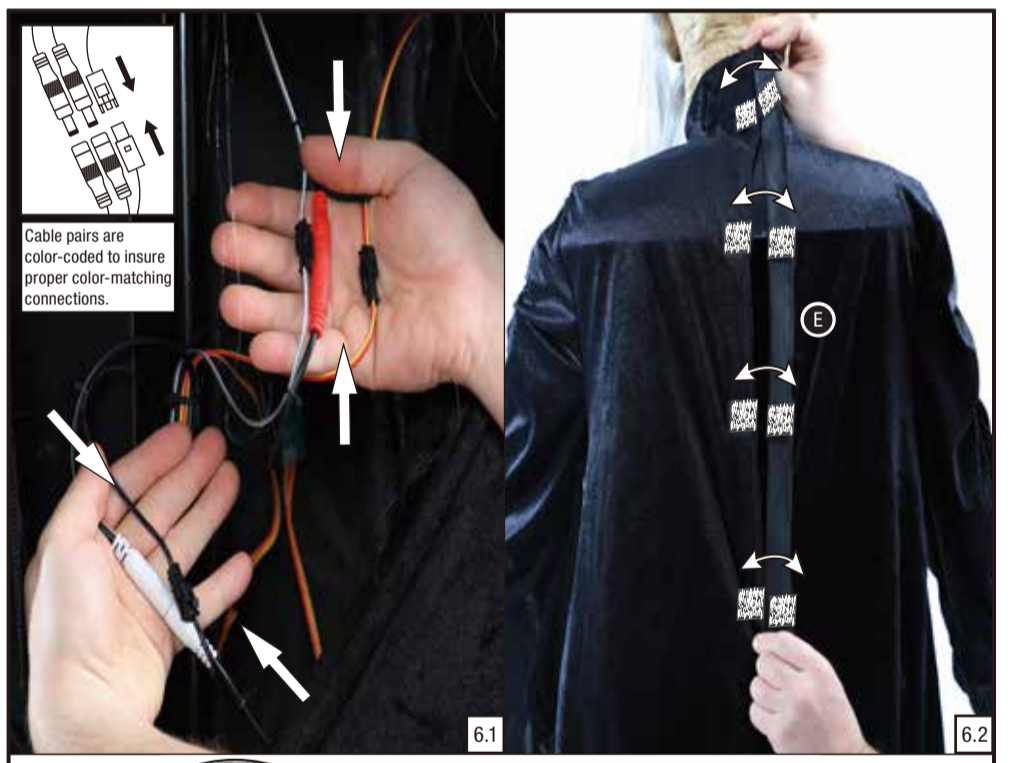
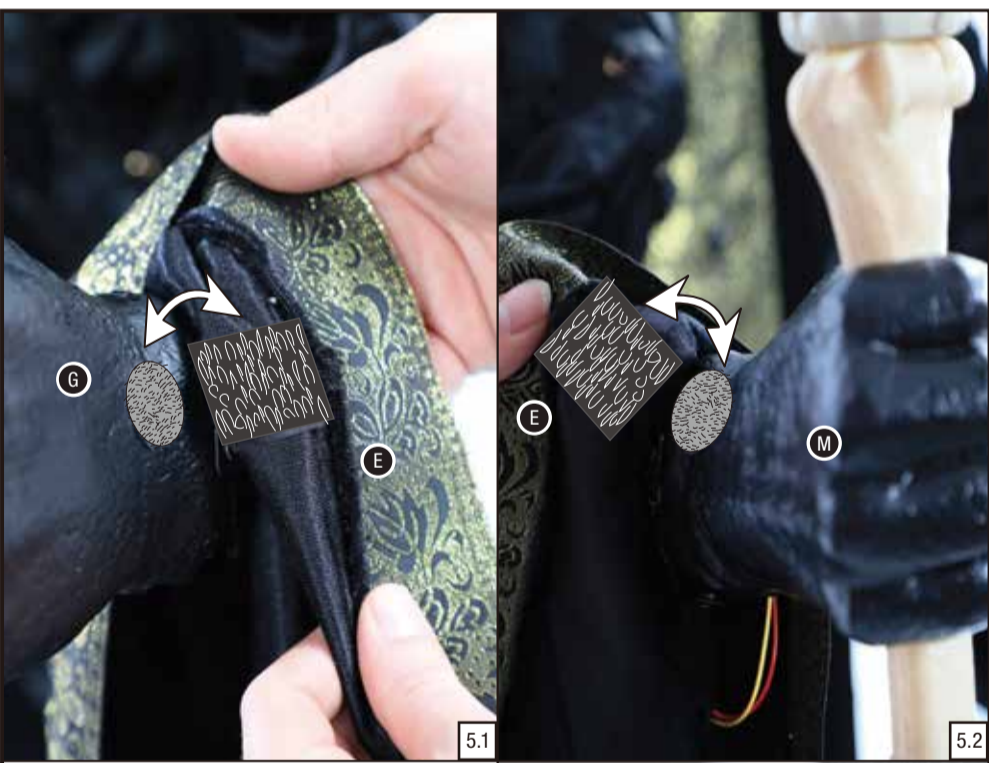
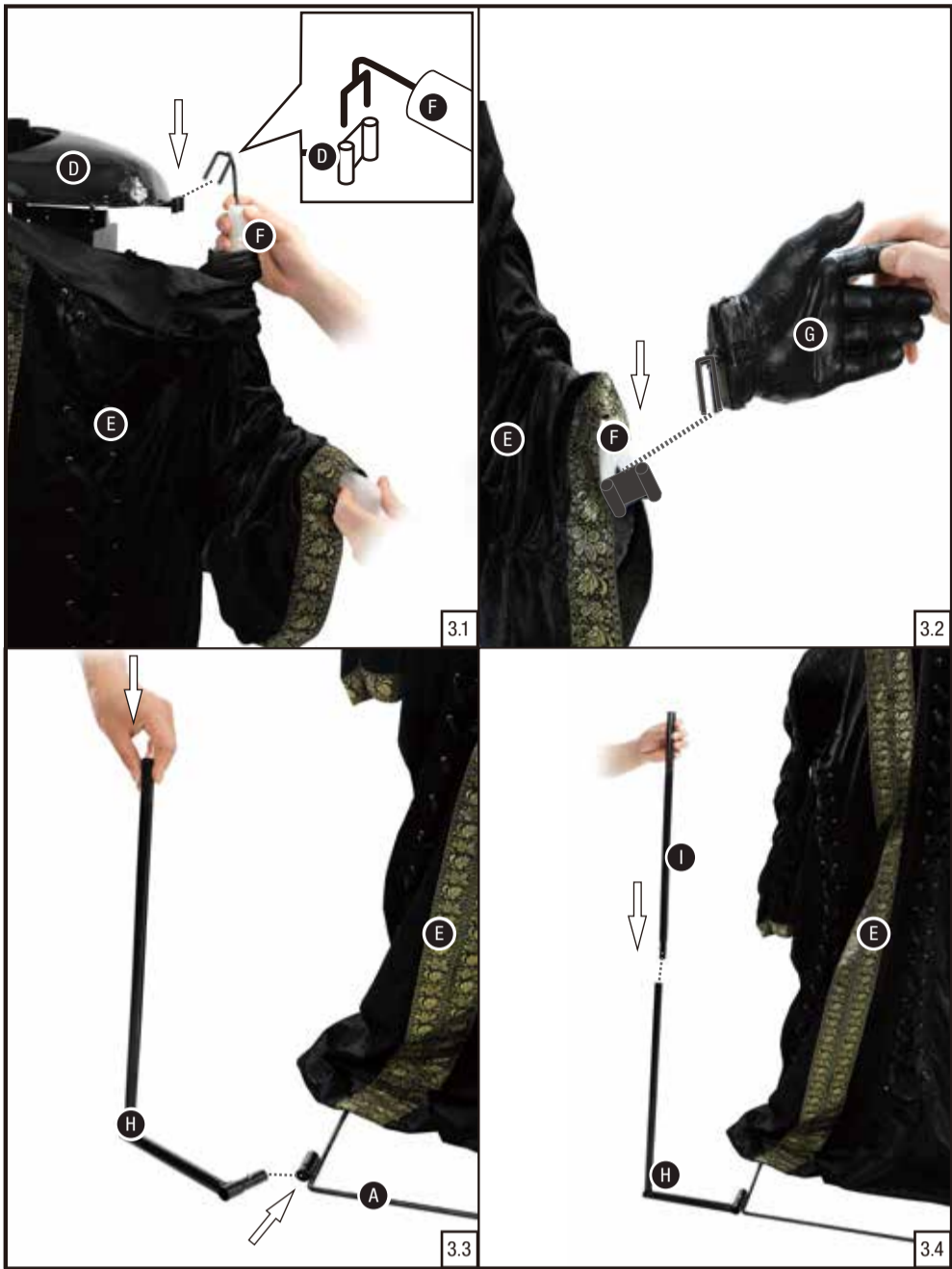
ADAPTER

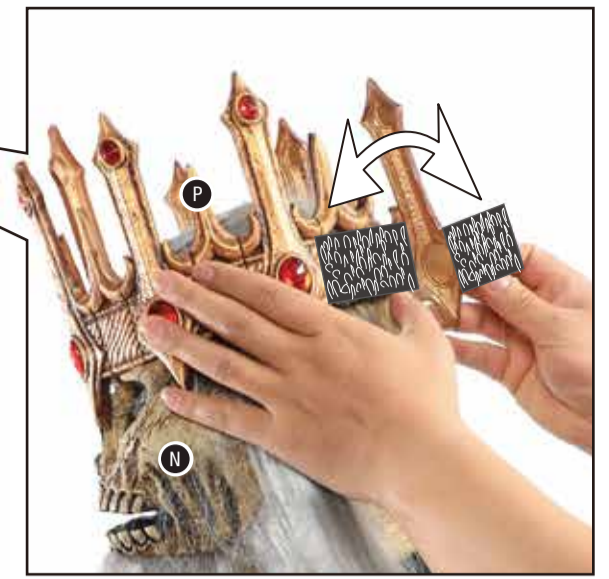


2.1



2.2





IR SENSOR
Be sure nothing is blocking the sensor.

Your King of the Underworld is now fully assembled. Plug in and turn on to let the fun begin!

7.1

OPERATION INSTRUCTIONS:

1. Plug the power adapter into a standard power outlet and adjust the settings on the Function Control Box, located on the Torso Frame, as desired.

2. Settings:

Sensor: This switch mode will activate lights, sound, and animation when the Infra-red (IR) sensor is activated and will operate for 1 audio-cycle with each activation. The Infra-red (IR) sensor has a range of up to 2 m/6.5 ft. and will activate when someone comes within an 80-degree angle from left-to-right, as well as from above and below.

○ / OFF / Try Me: This switch mode allows the item to be activated only if triggered by using a Step Here Try Me Activation Pad (Not Included). The item will operate for one audio cycle with each Try Me activation.

I / ON : This switch mode will continuously operate the lights, sound, and animation of the item.

⊖ / ⊕ : Raise or lower the volume using the volume control turn dial, turn all the way down to turn the volume off .

This device complies with Part 15 of the FCC Rules. Operation is subject to the following two conditions: (1) This device may not cause harmful interference, and (2) this device must accept any interference received, including interference that may cause undesired operation.

CAUTION: Changes or modifications not expressly approved by the party responsible for compliance could void the user's authority to operate the equipment.

NOTE: This equipment has been tested and found to comply with the limits for a Class B digital device, pursuant to Part 15 of the FCC Rules. These limits are designed to provide reasonable protection against harmful interference in a residential installation. This equipment generates, uses, and can radiate radio frequency energy and, if not installed and used in accordance with the instructions, may cause harmful interference to radio communications. However, there is no guarantee that interference will not occur in a particular installation. If this equipment does cause harmful interference to radio or television reception, which can be determined by turning the equipment off and on, the user is encouraged to try to correct the interference by one or more of the following measures: Reorient or relocate the receiving antenna, Increase the separation between the equipment and receiver, Connect the equipment into an outlet on a circuit different from that to which the receiver is connected. Consult the dealer or experienced radio/TV technician for help.

CAN ICES-3(B)/NMB-3(B)

Distributed by Home Depot
2455 Paces Ferry Road Atlanta, GA 30339
1-877-527-0313

