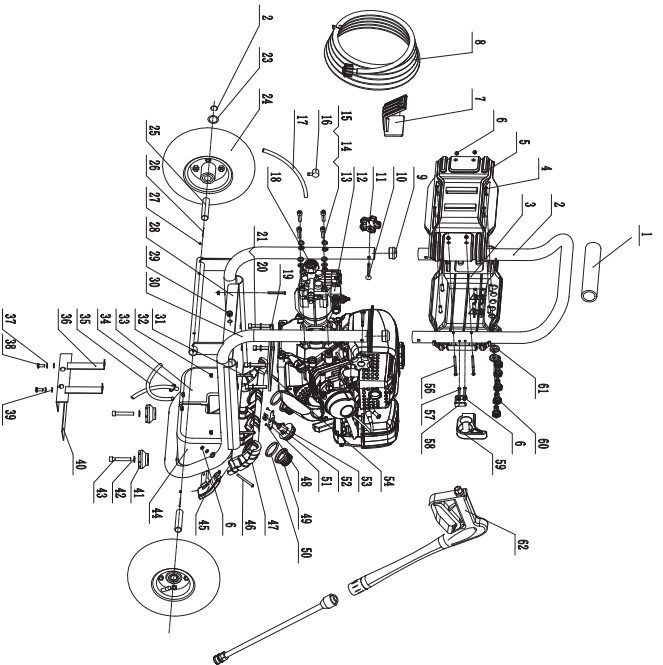


Owner's Manual

PARTS and PARTS LIST



18

Owner's Manual

NO	APA Parts NO	DESCRIPTION	QTY
1	APW/5119-YG-01	Handle foam	1
2	APW/5119-YG-02	Handle	1
3	APW/5119-YG-03	Front panel	1
4	APW/5119-YG-04	Cross Pan Head Tapping Screw ST4x25	4
5	APW/5119-YG-05	Back panel	1
6	APW/5119-YG-06	Locknut M6	8
7	APW/5119-YG-07	Hose hook	1
8	APW/5119-YG-08	Pressure hose	1
9	APW/5119-YG-09	plug	2
10	APW/5119-YG-10	square neck bolt	2
11	APW/5119-YG-11	Knob Assembly	2
12	APW/5119-YG-12	pump	1
13	APW/5119-YG-13	Inner Hexagon Bolt M8x25	4
14	APW/5119-YG-14	Spring Washer	4
15	APW/5119-YG-15	Gasket	14
16	APW/5119-YG-16	Thermal relief	1
17	APW/5119-YG-17	Drain pipe	1
18	APW/5119-YG-18	Inlet connector	1
19	APW/5119-YG-19	Engine pad	1
20	APW/5119-YG-20	Inner Hexagon Bolt M8x45	4
21	APW/5119-YG-21	Washer 8	6
22	APW/5119-YG-22	Circlip 16	2
23	APW/5119-YG-23	Plain washer 16	2
24	APW/5119-YG-24	10 Wheel	2
25	APW/5119-YG-25	Wheel shaft	2
26	APW/5119-YG-26	Spring wire	2
27	APW/5119-YG-27	Circlip	2
28	APW/5119-YG-28	Plate	1
29	APW/5119-YG-29	Wire sleeve	1
30	APW/5119-YG-30	Frame	1
31	APW/5119-YG-31	Cross Pan Head Screw M6x45	4
32	APW/5119-YG-32	Locknut M6	4
33	APW/5119-YG-33	Delegentank (A)	1
34	APW/5119-YG-34	Spring lock	5
35	APW/5119-YG-35	Injection hose	2
36	APW/5119-YG-36	Delegentank holder	1
37	APW/5119-YG-37	Spring gasket 5	2
38	APW/5119-YG-38	Cross Pan Head Screw M5x16	2
39	APW/5119-YG-39	Washer 5	2
40	APW/5119-YG-40	Rubber Pad	1

19

Owner's Manual

Limited Warranty

All-Power America warrants to the original purchaser who uses the product in a consumer application (personal, residential or household usage) that all products covered under this warranty are free from defects in material and workmanship for one year from the date of purchase. All products covered by this limited warranty which are used in commercial applications (i.e. income producing) are warranted to be free of defects in material and workmanship for 90 days from the date of original purchase. Products covered under this warranty include air compressors, air tools, service parts, pressure washers and generators.

All-Power America will repair or replace, at All-Power America's sole option, products or components which have failed within the warranty period. Service will be scheduled according to the normal work flow and business hours at the service center location, and the availability of replacement parts. All decisions of All-Power America with regard to this limited warranty shall be final.

This warranty gives you specific legal rights, and you may also have other rights which vary from state to state.

RESPONSIBILITY OF ORIGINAL PURCHASER (initial User):

To process a warranty claim on this product, DO NOT return item to the retailer. The product must be evaluated by an Authorized Warranty Service Center. For the location of the nearest Authorized Warranty Service Center contact the retailer or place of purchase.

Returnoriginalcashregisterreceiptsprroofofpurchasefor warrantywork.

Use reasonable care in the operation and maintenance of the product as described in the Owner's Manual(s).

Deliver or ship the product to the Authorized Warranty Service Center. Freight costs, if any must be paid by the purchaser.

If the purchaser does not receive satisfactory results from the Authorized Warranty Service Center, the purchaser should contact All-Power America.

Owner's Manual

Limited Warranty (cont'd)

THIS WARRANTY DOES NOT COVER:

- Merchandise sold as reconditioned, used as rental equipment, or floor or display models.
- Merchandise that has become damaged or inoperative because of ordinary wear, misuse, cold, heat, rain, excessive humidity, freeze damage, use of improper chemicals, negligence, accident, failure to operate the product in accordance with the instructions provided in the Owner's Manual(s) supplied with the product, improper maintenance, the use of accessories or attachments not recommended by All-Power America, or unauthorized repair or alterations.
- Repair and transportation costs of merchandise determine not to be defective.
- Costs associated with assembly, required oil, adjustments or other installation and start-up costs.
- Expendable parts or accessories supplied with the product which are expected to become inoperative or unusable after a reasonable period of use.
- Merchandise sold by All-Power America which has been manufactured by and identified as the product of another company, such as gasoline engines. The product manufacturer's warranty, if any, will apply.
- ANY INCIDENTAL, INDIRECT OR CONSEQUENTIAL LOSS, DAMAGE OR EXPENSE THAT MAY RESULT FROM ANY DEFECTS, FAILURE OR MALFUNCTION OF THE PRODUCT IS NOT COVERED BY THIS WARRANTY. Some states do not allow the exclusion, so it may not apply to you.
- IMPLIED WARRANTIES, INCLUDING THOSE OF MERCHANTABILITY OR FITNESS FOR A PARTICULAR PURPOSE, ARE LIMITED TO ONE YEAR FROM THE DATE OF ORIGINAL PURCHASE. Some states do not allow limitations on how long an implied warranty lasts, so the above limitations may not apply to you.

Distributed by:
JD North America, Corp
www.jdna.com

Owner's Manual

Trouble Shooting

- Engine will not start or stops while operating.
Low-oil shutdown:
Fill engine with oil
Engine switch not in "ON" position: Turn switch "ON"
Pressure built up in hose: Squeeze trigger while starting
- Engine is overloaded
Nozzle partially blocked Clean Nozzle
Excessive pressure Shorten the spring coil on the reflux valve
- Pressure increases when gun is locked
Bypass valve blocking Clean the bypass valve
- Engine is running but pump won't build maximum pressure or has irregular pressure
Faucet closed Open faucet
Unit has been stored in freezing temp. Thaw out unit completely
Inadequate water supply Provide a minimum of 4 GPM at 20 PSI
Water inlet screen clogged Clean screen
Kink in garden hose Straighten garden hose
Wand nozzle worn or damaged Replace nozzle
Air in pump Run with gun open & wand removed
until steady stream of water is released
Adjustable pressure knob not set Set to maximum position
to maximum position
Suction or discharge valves clogged Clean the suction or discharge valves
or worn out
Bypass valve not operating effectively Clean the bypass valve
- No intake of chemicals
Injection tube not securely inserted Push firmly into injector
into unit Replace tube
Tube cracked or split
Wrong nozzle Switch to low pressure nozzle
Injector turned off Turn collar counter
- Trigger will not move
Gun safety lock engaged Release safety lock

Owner's Manual

Trouble Shooting

- Water in crankcase
High humidity Change oil more frequently
Worn seals Change the oil seals
- Noisy operation
Worn bearings Change the bearings
Air mixed with water Check inlet lines for restrictions
and / or proper sizing
- Rough / pulsating, operating with pressure drop
Inlet restriction Check system for stoppages, air leaks,
unloader correctly sized inlet plumbing to pump
Air mix in water Check unloader for proper operation
proper sizing
Check inlet lines for restrictions and or
proper sizing
- High crankcase temperatures
Wrong grade of oil Use recommended oil
Improper amount of Adjust oil to proper amount
oil in crankcase

Owner's Manual

Maintenance

2. Clear the nozzle with a small rigid piece of wire such as a paper clip.
3. Flush the nozzle backwards with water.

4. Reconnect the wand to the gun.

Restart the pressure washer and depress the trigger on the spray gun. If the nozzle is still plugged or partially plugged, repeat above instructions 1-4.

If the previous procedure does not clear the nozzle, replace with a new nozzle.

ENGINE MAINTENANCE

During the winter months, rare atmospheric conditions may develop which will cause an icing condition in the carburetor. If this develops, the engine may run rough, lose power and may stall. This temporary condition can be overcome by deflecting some of the hot air from the engine over the carburetor area.

Storage

PUMP STORAGE

If you must store your pressure washer in a location where the temperature is below 32° F, you can minimize the chance of damage to your machine by utilizing the following procedure:

1. Shut off water supply and relieve pressure to the spray gun by depressing the trigger. Disconnect the garden hose from the pressure washer, but leave the high pressure hose connected.
2. Tip the unit on its side with the inlet connection pointing up.
3. Insert a small funnel (to prevent spilling) into the inlet and pour in approximately 1/4 cup of antifreeze.
4. Disconnect spark plug wire.
5. Without connecting garden hose pull the recoil several times to circulate the antifreeze in the pump system.
6. Disconnect spark plug wire.

⚠ CAUTION

Prior to starting, thaw out any possible ice from the pressure washer hoses, spray gun and wand.

Owner's Manual

Maintenance

Another method of reducing risks of freeze damage is to drain your pressure washer as follows:

1. Stop the pressure washer and detach supply hose and high pressure hose. Squeeze the trigger of the discharge gun to drain all water from the wand and hose.
2. Restart the pressure washer and let it run briefly about 5 seconds) until water no longer discharges from the high pressure outlet.

Engine Storage

When the pressure washer is not being used or is being stored for more than a month follow these instructions:

1. Replenish engine oil to upper level.
2. Drain gasoline from fuel tank, fuel line, fuel valve and carburetor.
3. Pour about one teaspoon of engine oil through the sparkplug hole, pull the recoil starter slowly until you feel increase pressure which indicates the piston is on its compression stroke and leave it in the position. This closes both the intake and exhaust valves to prevent the inside of the cylinder from rusting.
4. Cover the pressure washer and store in a clean, dry place that is well ventilated away from open flame or sparks.

NOTE: The use of a fuel additive, such as STA-BIL, or an equivalent, will minimize the formulation of fuel gun deposits during storage.

Technical Specification

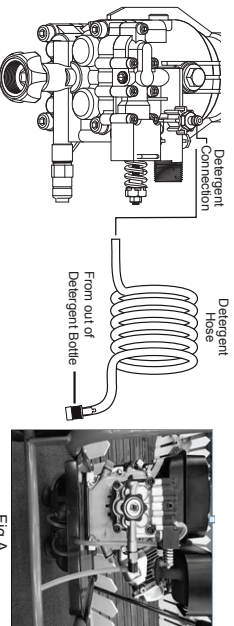
Maximum Inlet Pressure	Up To 90 PSI
Maximum Pressure	3200 PSI
Rated Flow	2.6 GPM
Engine Model	JF210
Displacement	208 cc
RPM	3600 RPM
Fuel Tank	0.95 gallon
Temperature Of Pumped Fluids	Up To 80 °F
Inlet Ports	(2) 1/2 inch BSP
Discharge Ports	(2) 1/2 inch BSP
Weight	81.6 lbs.
Engine Oil	10W-30
Fuel	Unleaded Gas

Owner's Manual

CAUTION

This pressure washer is intended for use only with liquid car wash detergents, developed specifically for pressure washers and with mild soaps. Only use chemicals compatible with the aluminum and brass parts. Powdered soaps may clog the injection system. Always use chemicals according to the manufacturer's directions. We assume no responsibility for any damages caused by chemicals injected through this pressure washer.

1. Attach injection tube assembly to the detergent connection on the pump. Assembly Instructor(BEL OW).
 2. Pour the two kinds of detergents into the detergent bottles. It is recommend to have one detergent bottle filled with allpurpose detergent, and the other filled with a more specific cleaning detergent.
 3. The indicator on the detergent dial shows the amount and the consumption of detergent Fig A.
 4. Remove the high pressure nozzle from the wand and install the black injection nozzle. The solution will automatically mix with the water and discharge through the nozzle.
- NOTE:** For certain models, if the engine throttle is not in the fast position, the injection of the solution may be decreased or stopped.



CLEANING TECHNIQUES

When cleaning with the pressure washer, many cleaning tasks can be solved with water alone, but for most tasks, it is advantageous to use a detergent. A detergent ensures a quick soaking of the dirt allowing the high pressure water to penetrate and remove the dirt more effectively.

APPLICATION OF SOAP OR DEGREASER

1. Apply the solution to the dry work surface. On a vertical surface, apply horizontally from side to side starting from bottom to avoid streaking.

NOTE: Wetting the surface first is not recommended, it dilutes the detergent and reduces its cleaning effects. Please disconnect the Detergent hose from the Pump when do not use the detergent, and let the pressure washer run until you no longer notice detergent coming out of the wand. This will prevent detergent from gumming up the wand and reducing pressure for next use.

Owner's Manual

Operation

Avoid working on hot surfaces or in direct sunlight to minimize the chances of the chemical damaging painted surfaces. Damage may occur to painted surfaces if the chemical is allowed to dry on the surface. Hold the nozzle far enough away from surface to prevent damage to the surface.

2. Allow chemical to remain on the surface for a short time before rinsing.
3. Rinse with clean water under high pressure. On a vertical surface, first rinse from the bottom up, then rinse from top down. Hold nozzle 6 to 8 inches from the work surface at a 45° angle using the flat spray as a peeling tool rather than a scrub brush.

APPLICATION OF WAX

1. Immediately after cleaning, apply wax. Place injection tube in container of wax.
 2. Apply the wax sparingly in an even layer. Apply to wet surfaces from bottom up for even distribution and to avoid streaking.
 3. Remove the suction tube from the wax bottle, rinse off the surplus wax.
- NOTE:** If surplus wax is not removed, a hazy finish may result.
4. Wipe dry to reduce water spotting.

END OF OPERATION

When you have completed use of chemical injection system, remove tube from container. Continue to run in low pressure position and inject clean water through the tube and injection system by plading end of tube in a container of clean water. Continue to run until it is thoroughly cleaned.

Maintenance

CONNECTIONS

Connection on pressure washer hoses, gun and spray wand should be cleaned regularly and lubricated with the manufacturer's recommended grease to prevent leakage and damage to the O-ring.

NOZZLE

Clogging of the nozzle causes the pump pressure to be too high, cleaning is immediately required.



WARNING
A nozzle cleaner must only be used when the spray wand is disconnected from the gun or personal injury may occur.

1. Separate the wand from the gun.