

ARTOGRAPH®

Products for the Creative Mind®

2021 CATALOG

A continuous flow of unique and innovative products of superior value to the creative markets around the world

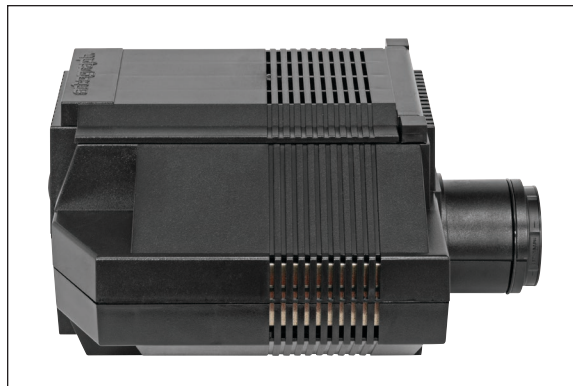


PRISM™ Projector

#25090 Black



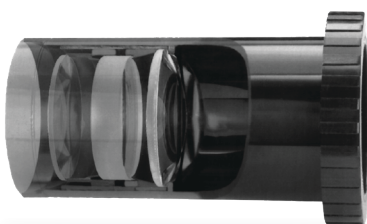
Add a Super Prism Lens for high definition enlargements.



The Prism™ is designed for projecting a wide variety of original sketches, line drawings and patterns. The reversible lens allows a projection range from 80% reduction to 20 times enlargement in full color. Great for fine art, illustrations, murals, airbrushing, craft projects, banners and more!

SUPER Prism Lens®

#25197 Black



Upgrade your Prism™ Projector to a Super Prism with this 3-element, 240mm, color-corrected lens for finer detail and increased image clarity and accuracy. This precision-ground lens offers enlargement from 3x to 20x the original size.



SUPER PRISM™ Projector



#25190 Black

Designed for projecting a wide variety of original sketches, line drawings and patterns. The reversible lens allows a projection range from 80% reduction to 20 times enlargement in full color. Great for fine art, illustrations, murals, airbrushing, craft projects, banners and more! The Super Prism Projector also includes a 3-element, 240mm, color-corrected lens for finer detail and increased image clarity and accuracy. This precision-ground lens offers enlargement from 3x to 20x the original size.



PRISM™ Bulb

#25043 Frosted White

If you ever need a new bulb, or if you simply would like a spare bulb so you always have a back-up and not lose your creative momentum, we offer a replacement bulb for the Prism™ and Super Prism™ Projectors. With 250 watts and 6,500 lux, we want your projects to shine as bright as possible. Sold as a 2-pack.

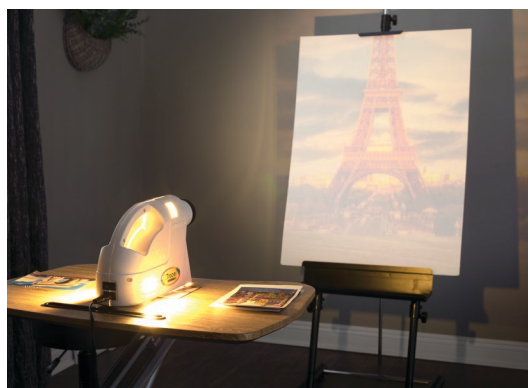


EZTracer®

#25550 White



The EZ Tracer® opaque art projector makes tracing, enlarging, and transferring images easy! It's compact and easy to use, and is a great tool for youth arts and crafts projects.



Tracer®

#25360 Black



The Tracer® opaque art projector makes tracing, enlarging, and transferring images easy! The perfect tool for decorators, crafters, artists, painters, and hobbyists.

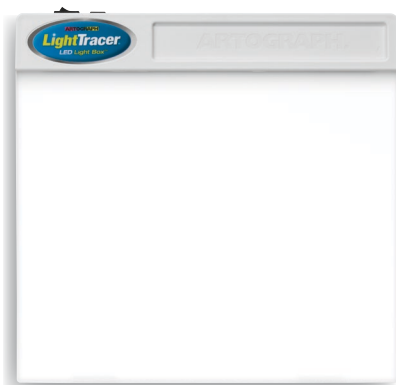


LIGHTTracer®

#25365 White



The LightTracer® has a slanted surface, making it more comfortable to use than standard flat light boxes. Rest the lightweight LightTracer® on your lap or table and you have a comfortable surface at a good angle for creative work. With brilliant LED light, the LightTracer® always stays cool, and with no bulbs to change, the LEDs will last through years of regular use. Easy to use, just plug in the LightTracer® and turn on the switch.



LIGHTTracer[®]2

#25375 White



The LighTracer[®]2 is the perfect tool for those larger, more complex tracing projects. With an 80% larger work surface and greater illumination than the regular LightTracer[®], the LighTracer[®]2 provides plenty of room and brightness for all your tracing and embossing needs. This light box is ideal for fabric decorating and transferring quilting patterns. Features a large, conveniently slanted 18" x 12" illuminated work surface and a handy recessed tray for holding tracing and embossing tools.

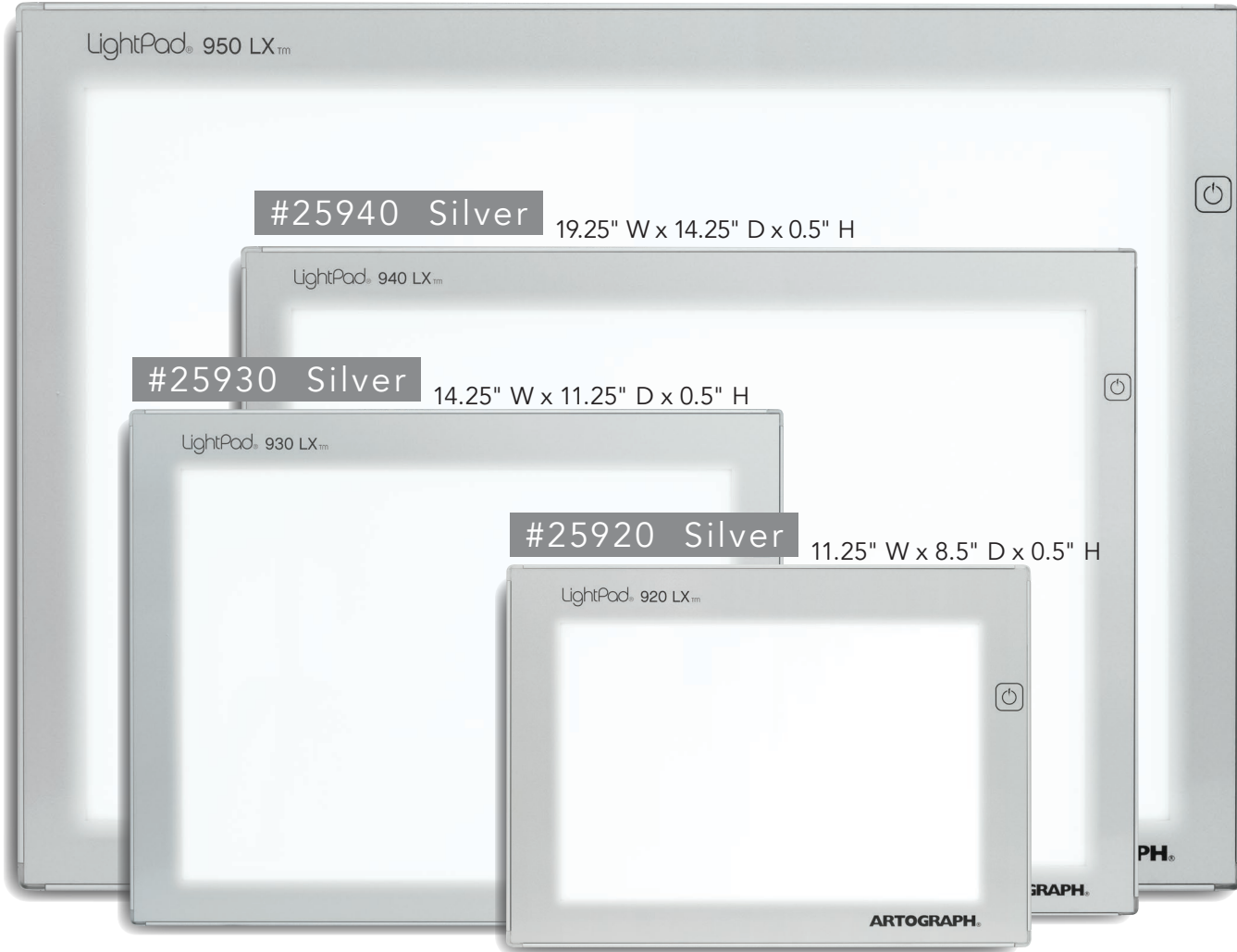


LightPad® 920, 930, 940, & 950 LX™

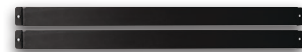
Great for Scrapbooking, Embossing, Visualizing & Viewing, Stained Glass, Stenciling, Tattoo Transferring, Calligraphy, Quilting, Sewing Projects, and more!

#25950 Silver

Overall Dimensions: 26.5" W x 19.25" D x 0.5" H



The Studio Designs **Light Pad Support Bars** attach to the back of your Futura, Vision, or Folding Craft Station, suspending a LightPad® underneath, securing placement, and preventing scratches. Available in Black and Silver.



#10074 Black



#10049 Silver



TURN YOUR
TABLE
INTO A
LIGHTBOX



#10050 Futura Craft Station

Featherweight LightPad®



#25830 Silver 14" W x 10.5" D x 0.25" H



#25832 Silver 18.5" W x 13.5" D x 0.25" H



Super lightweight and half as thin as our regular LightPad® series.

PADPUCKS®

#25946 Black

These uniquely designed and easy to use PadPucks® provide an adjustable and comfortable drawing angle to any of our LightPads® as well as to any tablet, laptop or drawing board. Simply insert the soft, non-marring vinyl PadPucks® under the LightPad™ or other surface to the desired angle. Featuring a round serrated design for a non-slip grip and easy stacking.

Sold as a Set of 4 PadPucks®



Shown with LightPad® 920 LX™



Other Creative Uses



Artograph® Futura Light Table

with Custom Integrated LightPad®

#10062 Charcoal/Clear Glass



The perfect, multi-functional, contemporary table, the Artograph Futura Light Table is great for drafting, drawing, or crafting. Its large, tempered, safety glass worksurface adjusts from flat to 35°. We've designed a custom fit LightPad® that sits neatly underneath the glass. Other features include a large pencil drawer, four removable side trays for supplies and three slide-out drawers that mount on either side of the table.



lux



lifespan hours



dimnable light

4000K

5000K

6000K

7000K

cool white color temperature

6-7K



Flare450

#25115 White



6" W x 3.5" D x 1.25" H

The latest LED technology went into the design of the Flare 450 Projector. This digital projector produces a high definition picture that's bright and vivid. The 420 lux display a maximum of 1920 x 1080 pixel image. The LED lights have a 30,000 hour lifespan and run on a rechargeable lithium ion battery for up to 2.5 hours in eco mode, or simply leave the projector plugged in for longer sessions. The Flare 450 is small and lightweight for maximum portability, but its powerful lens can project images up to 120".



Front



Side



Back



Nylon Bag



Power Supply



Touchpad



HDMI Cable



Remote



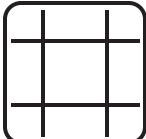
USB Drive



Video & Audio Playback



Photo Slideshow



12 Built-In Grids



Text Display



2.5 Hrs (Eco Mode)



Keystone Adjustment

Digital Projector Table Stand

#25009 Black/Red



Mini Tripod Tabletop Stand

#25005 Black



Legs Fold to 5.5"

Both stands feature 360° Swivel Ball attachments with standard 1/4" bolts, and include adjustable Phone Holders.

Use any Artograph® Projector with any of our adjustable height, mobile carts and desks.

Sierra Adjustable Height Desk

#51230 Silver/Black
#51231 White/Cherry



Laptop Cart

#51200 Chrome/Black Glass
#51201 Chrome/Clear Glass



Vision Mobile Cart

#403529 Silver/Frosted Glass



Ridge Mobile Desk

#51235 Silver/Maple



ARTOGRAPH
Products for the Creative Mind®

6027 Bandini Blvd.,
Commerce, CA 90040
www.artograph.com
www.studiodesigns.com