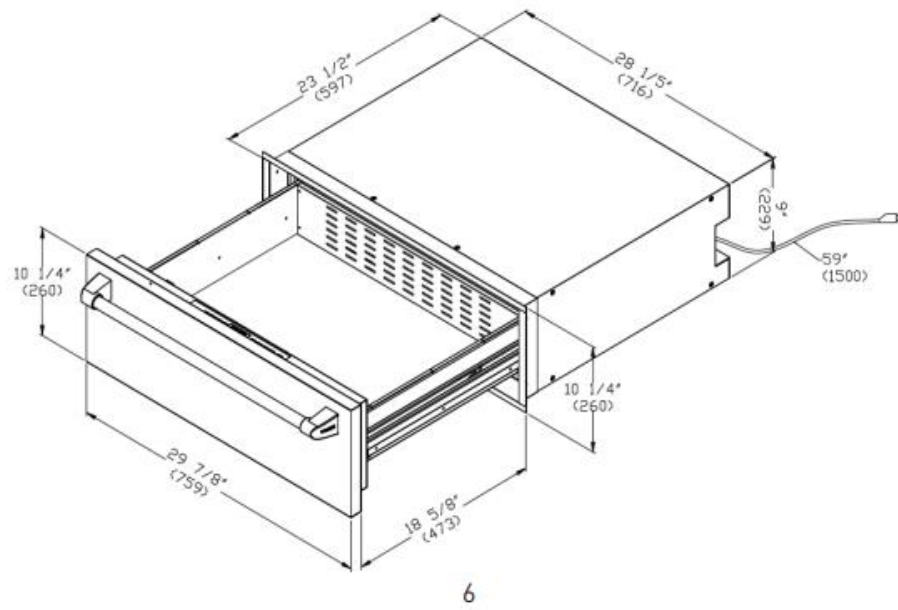
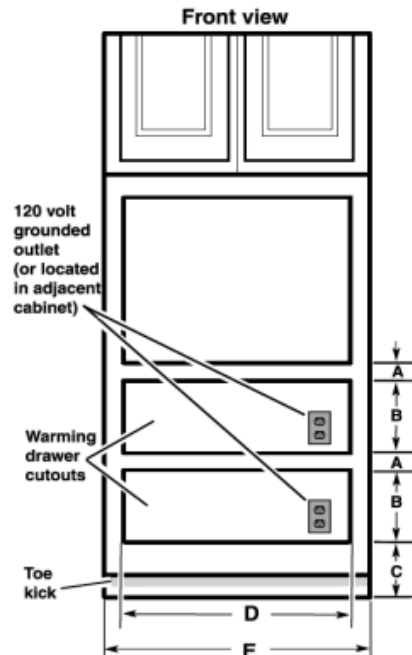


PRODUCT DIMENSIONS



INSTALLATION DIMENSION

CABINET FRONT VIEW



WARMING DRAWER SIZE	MINIMUM BETWEEN CUTOUTS (A)	CUTOUT HEIGHT (B)	MINIMUM/RECOMMENDED (C)	CUTOUT WIDTH (D)	MINIMUM CABINET WIDTH (E)
30"	2½"	9⅞"	1" (2.5 cm)/	28½"	30"
(76.2 cm)	(6.4 cm)	(23.2 cm)	4¼" (10.8 cm)	(72.2 cm)	(76.2 cm)

Warming drawer can be installed as an indoor single or double installation or installed under a single oven. Two warming drawers

under a single oven are shown.

NOTE: The warming drawer cannot be leveled after being installed.

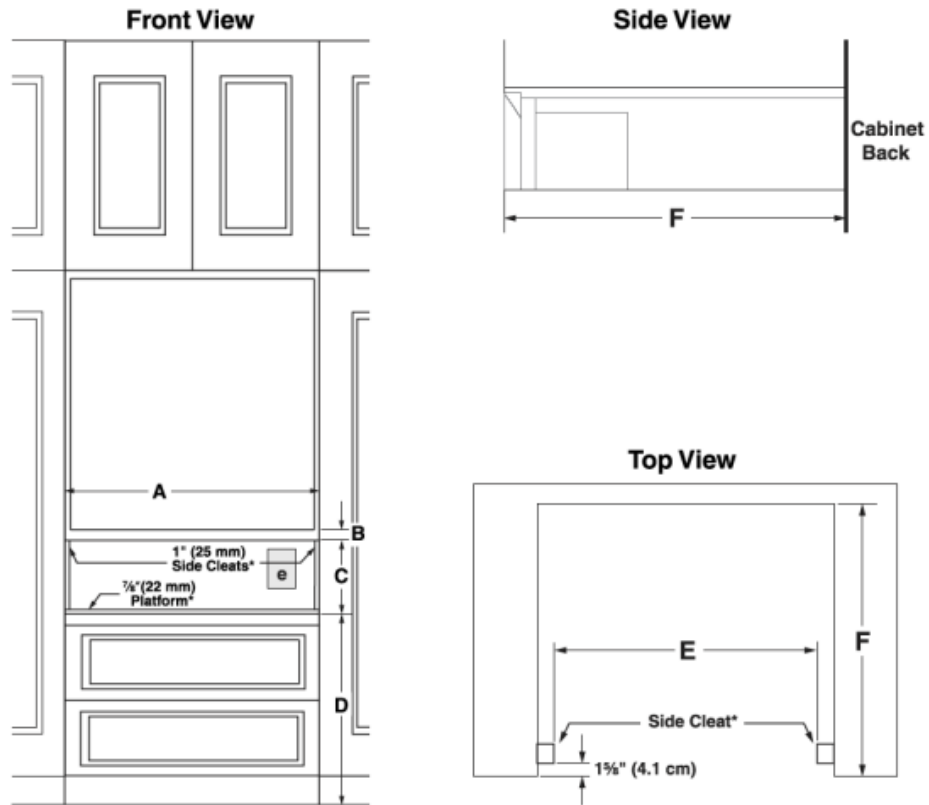
For outdoor installation follow the cutout dimensions above. Install the outdoor warming drawer in a permanent fixture.

Custom Wood Drawer Front

If you plan to install a custom wood panel to match your cabinets, we recommend consulting a qualified cabinetmaker or carpenter. The back of the wood panel must be sealed to avoid moisture damage.

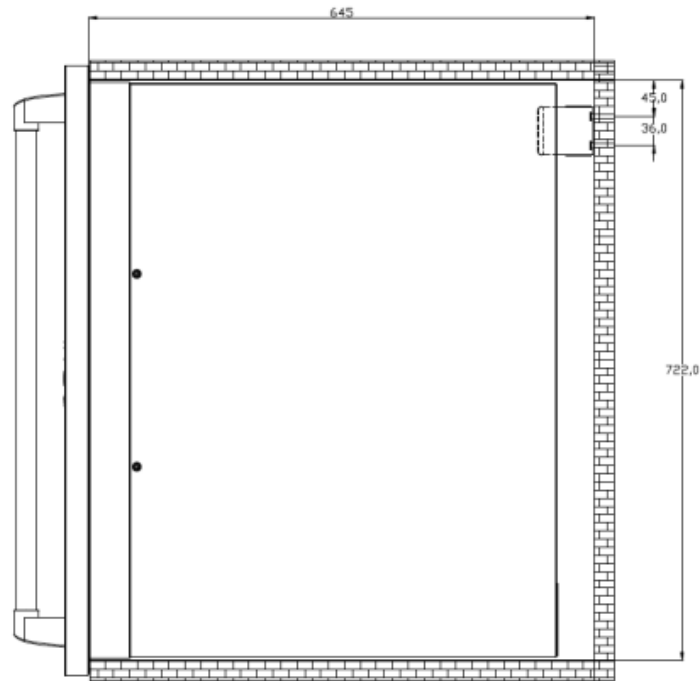
INSTALLATION DIMENSION

CLEARANCE DIMENSIONS – FLUSH INSTALLATION

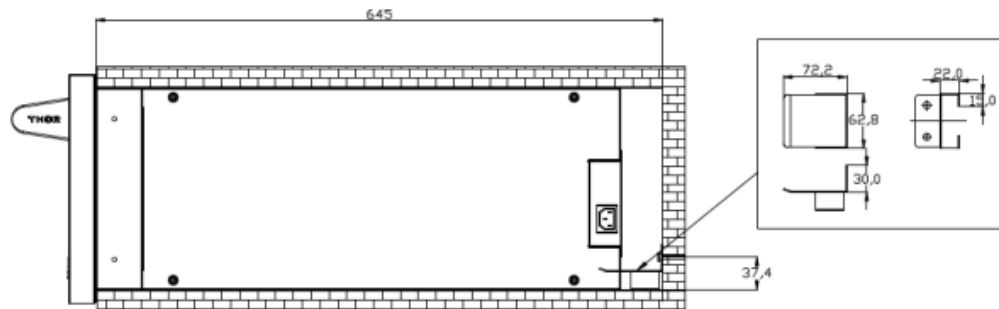


30" Models		
A	Width of flush inset cutout (minimum)	30 1/4" (76.8 cm)
B	Height between cutouts (minimum)	2 1/2" (6.4 cm)
C	Height of flush inset cutout (minimum)	10 3/4" (27.3 cm)
D	Bottom of cutout to floor (recommended)	8 1/4" (21.0 cm)
	Bottom of cutout to floor (minimum)	5" (12.7 cm)
E	Width of opening (minimum)	28 1/4" (71.8 cm)
F	Depth of cutout (minimum)	25 3/8" (64.5 cm)
e	Recommended outlet location	

INSTALLATION DIMENSION



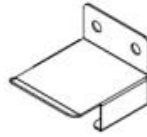
Fix the anti-tilt fixing plate on the back wall with screws according to the size shown in the figure. After the product is pushed in, Fix it with screws at the screw hole in the front of the product.



ACCESSORIES



Installation Wrench



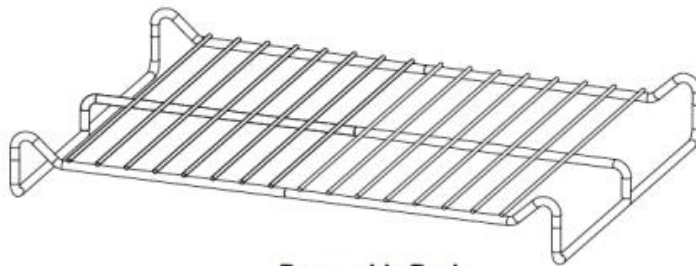
Anti-tip bracket



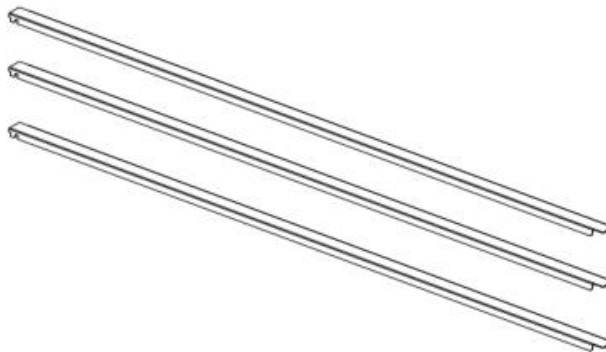
Screw*2



Power Cord



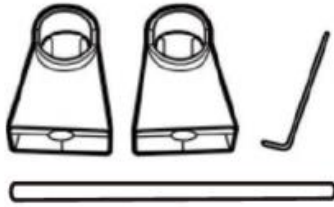
Removable Rack



Pan Support Rails*3

INSTALL HANDLE

1. How to install Handles For Thor KD Models.

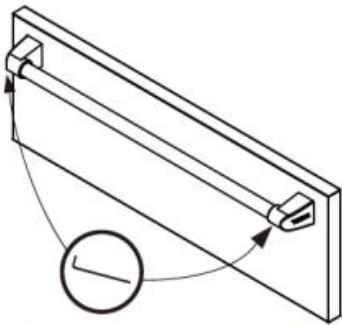


2*Handle Holders, 1*Installation Wrench, 1*Handle

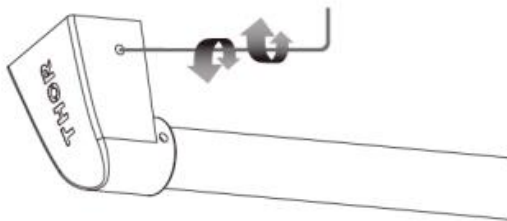
2. Connect the handle to the handle holders.



3. Lay the door handle against to the oven door and fit it on the connection part.



4. Use the wrench to get the door handle holder tight.



5. Check if the oven door is level and stable.