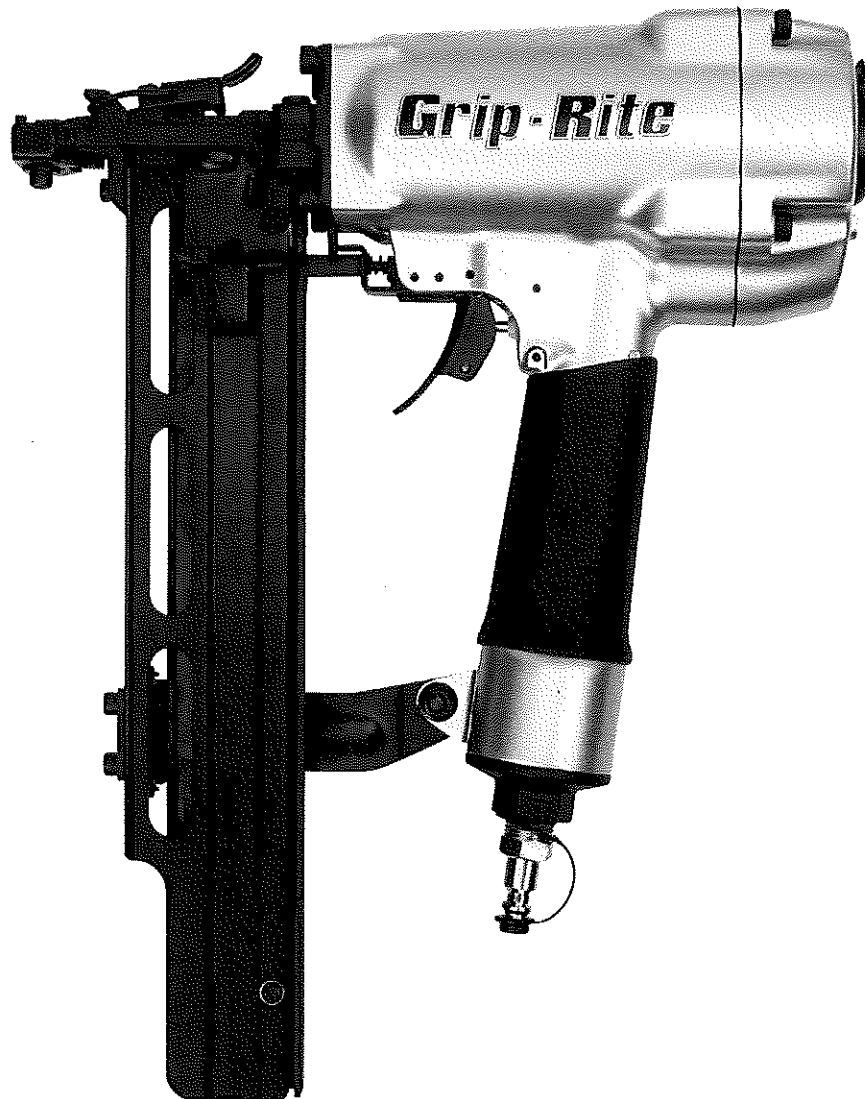




**OPERATOR'S  
MANUAL & PARTS**  
MODEL GRTSM2016C STAPLER



## TABLE OF CONTENTS

---

<b>TABLE OF CONTENTS</b> .....	2
<b>SPECIFICATIONS</b> .....	3
<i>Fastener Selection Chart</i> .....	3
<b>SAFETY</b> .....	4
<b>TOOL PARTS</b> .....	8
<b>PART DESCRIPTIONS</b> .....	9
<b>OPERATION</b> .....	10
<i>Loading Staples</i> .....	10
<i>Adjusting Fastener Drive</i> .....	11
<i>Clearing Staple Jams</i> .....	11
<i>Tool Operation</i> .....	12
<b>MAINTENANCE</b> .....	13
<i>Lubrication</i> .....	13
<i>Cleaning</i> .....	13
<i>Trigger Check</i> .....	13
<b>PARTS SCHEMATIC</b> .....	14
<b>PARTS LIST</b> .....	15
<b>TROUBLESHOOTING</b> .....	16
<b>TOOL CHECKS</b> .....	17
<b>WARRANTY</b> .....	18

### **IMPORTANT SAFETY INFORMATION**

You must read this entire manual and familiarize yourself with all safety, operating, and service instructions before loading, handling, or using your tool. When used correctly, pneumatic fastening tools provide a lightweight, powerful, and safe means of fastening. Used improperly, these tools can cause serious injury to you and those around you.

## SPECIFICATIONS

### SPECIFICATIONS

**MODEL** ..... GRTSM20106C  
**FASTENER RANGE** ..... 1" - 2" (25mm - 50mm)  
**FASTENER TYPE** ..... 16 Ga. Staples  
**CROWN SIZE** ..... 7/16" Crown  
**MAGAZINE CAPACITY** ..... 140 Staples  
**MAX. AIR PRESSURE** ..... 120 psi (8bar)  
**MIN. AIR PRESSURE** ..... 70 psi (4.8bar)  
**TOOL WEIGHT** ..... 4.2 lbs. (1.9kg)  
**TOOL LENGTH** ..... 12.6" (32cm)  
**TOOL HEIGHT** ..... 10.8" (27.4cm)  
**TOOL WIDTH** ..... 2.9" (7.3cm)  
**TRIGGER** ..... Bump Fire  
**AIR INLET** ..... 1/4 NPT  
**LUBRICATION** ..... 10W Air Tool Oil (Provided)

**NOISE CHARACTERISTIC VALUES  
IN ACCORDANCE WITH ISO 3774, ISO 11201:**

A-weighted single-event sound  
 pressure level at operator's position ..... LpA, 1s = 92 dBA  
 A-weighted single-event sound power level ..... LwA, 1s = 101 dBA  
 A-weighted single-event  
 surface sound pressure level ..... LpA, 1s = 88 dBA

**VIBRATION CHARACTERISTIC VALUES  
IN ACCORDANCE WITH ISO 8862-1**

Weighted root mean square acceleration ..... = 2.8 m/s<sup>2</sup>

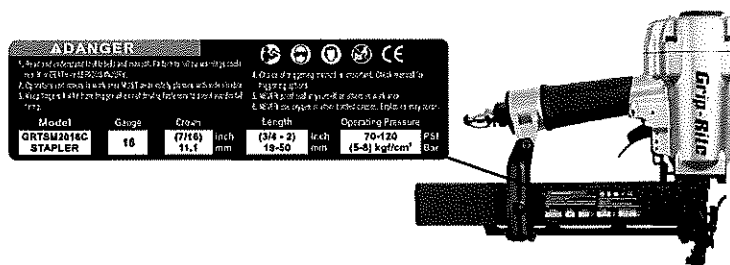
*For best results, use Grip-Rite® collated fasteners.*

FASTENER SELECTION CHART					
LEG LENGTH	BOX QTY.	CROWN SIZE	WIRE GA.	BRIGHT SKU	STAINLESS STEEL SKU
1" (25 mm)	10m	7/16	16	GRN13	N/A
1-1/4" (32 mm)	10m	7/16	16	GRN15	N/A
1-1/2" (38 mm)	10m	7/16	16	GRN17	GRN17SS
1-3/4" (38 mm)	10m	7/16	16	GRN19	GRN19SS
2" (51 mm)	10m	7/16	16	GRN21	GRN21SS

## SAFETY

### SAFETY LABELS

This pneumatic fastening tool includes a warning label to help remind you of important safety information when operating the tool. The safety label must be legible at all times, and must be replaced if it becomes worn or damaged.



### SAFETY SYMBOLS

These safety symbols provide a visual reminder of basic safety rules, and the personal injury hazard that may arise if all safety and operating instructions are not followed. Make sure you understand the meaning of each of these symbols, and protect yourself and others by obeying all safety and operating instructions.

SYMBOL	DESCRIPTION
	<b>READ THE MANUAL</b> — <i>The manual contains important safety and operating instructions that must be followed. All tool users must read the manual before using the tool.</i>
	<b>WEAR SAFETY GLASSES</b> — <i>Tool operator and bystanders must wear safety glasses with side shield that meet ANSI 287.1 requirements.</i>
	<b>RISK OF PERSONAL INJURY</b> — <i>Failure to follow all safety and operating instructions, or misuse of the tool, can result in serious injury to tool operator and bystanders.</i>

### SAFETY INSTRUCTIONS



#### **WEAR SAFETY GLASSES**

Always wear safety glasses with side shields that meet ANSI Z87 .1 requirements when operating the tool. Make sure all others in work area wear safety glasses.



#### **WEAR HEARING PROTECTION**

Wear hearing protection to protect your hearing from noise. Prolonged exposure to loud noise can result in hearing loss.



#### **NEVER OPERATE THE TOOL WITH OXYGEN OR OTHER BOTTLED GASES**

Oxygen and other reactive or high-pressure bottled gases can cause the tool to explode. Use clean, dry regulated compressed air from a properly operating air compressor.



#### **DO NOT EXCEED MAXIMUM RECOMMENDED OPERATING AIR PRESSURE OF 120 PSI/8 BAR.**

Exceeding the maximum recommended air pressure can cause the tool housing to burst, or cause premature failure of components.



#### **NEVER CONNECT THE TOOL TO AN AIR SUPPLY THAT HAS THE POTENTIAL TO EXCEED 180 PSI/12.4 BAR.**

Using a regulated air supply with a line or tank pressure greater than 180 psi can cause the tool to burst if the air line regulator falls suddenly.



#### **USE AN AIR HOSE RATED FOR 180 PSI/ 12.4 BAR OR GREATER**

Always use air hose rated to handle 180 psi or the maximum potential pressure of the air supply.



#### **ONLY USE A RELIEVING-TYPE AIR COUPLING IN THE TOOL AIRLET OPENING**

Use of a non-relieving air coupling on the tool can trap air inside the tool housing, and allow the tool to drive a fastener even after the air hose has been disconnected.

## SAFETY

---

### SAFETY INSTRUCTIONS



**DO NOT ATTEMPT TO OPERATE THE TOOL IF THE TOOL'S OPERATING CONTROLS HAVE BEEN MODIFIED OR ARE NOT WORKING PROPERLY**

Attempting to use a tool with modified or malfunctioning trigger or workpiece contact can result in a fastener being driven unintentionally.

**USE CORRECT FASTENERS**

Only use the correct fastener for the tool. Using fasteners with incorrect specifications can jam the tool or cause serious injuries.

**USE THE CORRECT FASTENERS FOR THE APPLICATION.**

Using the wrong fasteners can cause the workpiece to split and allow the fastener to fly free.



**KEEP TOOL POINTED IN A SAFE DIRECTION WHEN LOADING FASTENERS**

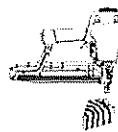
Never point the tool at yourself or anyone else when loading fasteners.

**DO NOT LOAD TOOL WITH TRIGGER OR WORKPIECE CONTACT DEPRESSED**

Depressing the trigger or workpiece contact during loading can result in an unintentional fastener drive if both devices are accidentally actuated at the same time.

**KEEP FINGER OFF TRIGGER UNTIL TOOL IS IN POSITION TO DRIVE A FASTENER**

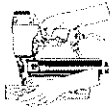
An unexpected bump or sudden contact with your body or that of a bystander can result in serious injuries.



**AVOID DRIVING FASTENERS INTO KNOTS, ON TOP OF OTHER FASTENERS, AT WORKPIECE EDGES, OR INTO BRITTLE MATERIALS**

Driving fasteners into extremely hard materials, or driving into workpiece edges, can cause fasteners to deflect away from the workpiece. Flying fasteners can cause serious injuries.

### SAFETY INSTRUCTIONS



#### **KEEP HANDS AND BODY PARTS AWAY FROM AREA BEING FASTENED**

Fasteners can deflect and turn as they are being driven into the workpiece, and penetrate fingers, hands, and other body parts that may be in the fastening area.



#### **DO NOT OVERREACH OR WORK WHILE ON UNSTABLE FOOTING**

If you lose your balance while fastening, you could drive a fastener into yourself or a bystander.



#### **DO NOT USE TOOL IF TOOL MALFUNCTIONS OR BEGINS LEAKING AIR**

Operating a malfunctioning tool can result in an unexpected fastener discharge and injury to yourself or others.



#### **DISCONNECT THE TOOL FROM THE AIR SUPPLY TO RELOAD, CLEAR JAMS, OR PERFORM MAINTENANCE**

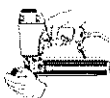
Never attempt to reload a tool, clear a jam, or perform maintenance without first disconnecting the air supply.

#### **NEVER LEAVE A LOADED, PRESSURIZED TOOL UNATTENDED**

A loaded, pressurized tool could be picked up or handled by someone who is unfamiliar with the tool or that has not read the tool manual.

#### **KEEP TOOLS OUT OF THE REACH OF CHILDREN**

Place the tool back in the tool box after use, and store the tool out of reach.



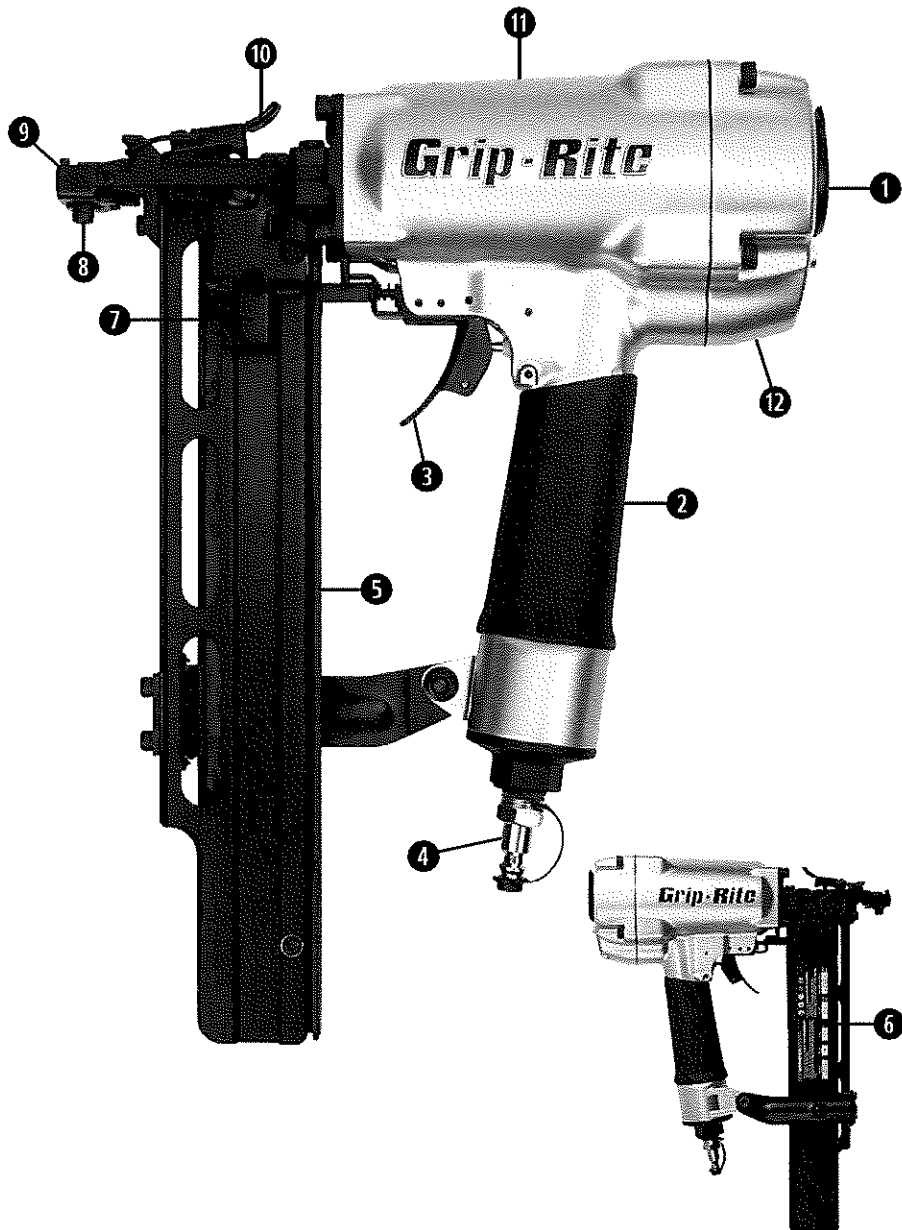
#### **DO NOT MODIFY TOOL**

Modifications can cause a tool to be unsafe and can cause the tool to operate improperly.

## DESCRIPTION

---

## TOOL PARTS





## DESCRIPTION

---

### PART DESCRIPTIONS

1. **360° Adjustable Air Deflector** — Deflector adjustment blows exhaust air away from operator.
2. **Cushioned Grip** — Cushioned handgrip reduces fatigue and provides comfortable operation.
3. **Bump Trigger** — Bump fire operation.
4. **Air Coupling** — Quick-disconnect male coupling allows quick connection to air hose.
5. **Top Load Staple Magazine** — Hold fasteners securely, and allows quick check of staple size and quantity.
6. **Safety Warning Label** — Provides important safety reminders that must be followed whenever handling, operating, or servicing the tool.
7. **Spring-loaded Pusher** — Provides positive fastener feeding in all tool positions. Latches in loading position for rapid, one-handed loading. Triangle indicators show when it's time to reload.
8. **Adjustable Depth of Drive** — Easy, one-tool depth of drive adjustment allows adjustments to be made at tool nose for consistent depth control.
9. **Workpiece Contact** — Spring-loaded contact mechanism prevents tool from driving a fastener unless tool is pressed down and held against a work surface.
10. **E-Z Clear Latch** — Clear jammed fasteners from nose without tools.
11. **Tool Housing** — Magnesium tool housing reduces tool weight.
12. **Cap** — Seals tool housing.  
**Metric Hex Wrenches** — Included with tool to allow tightening of metric screws and depth of drive adjustments. Keep tools in tool case for periodic tightening of screws.  
**Air Tool Oil** — Lightweight oil formulated for use in air tools provides proper lubrication to a-rings and internal parts.  
**Safety Goggles** — Provides required eye protection

## OPERATION

---

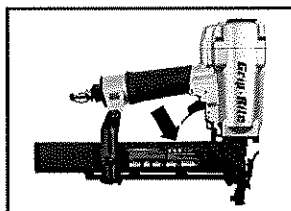
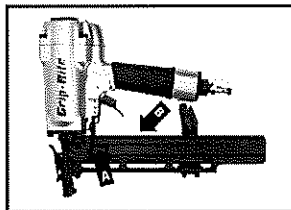
### LOADING FASTENERS

#### LOADING INSTRUCTIONS



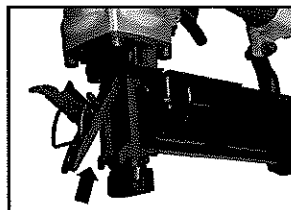
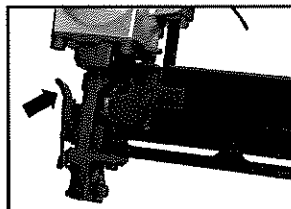
A fastener can be driven unintentionally if the trigger and safety bracket are activated at the same time. Always disconnect tool from air supply before loading fasteners, making adjustments, or performing any service on tool. Keep finger off trigger until ready to drive a fastener.

1. Pull pusher (A) back to latched position at rear of magazine.
2. Load staple strips (B) over magazine track. Slide strips down so that staple crowns ride on top rail, then slide forward toward tool nose.
3. Pull pusher (A) back and press release lever to release latch. Slide pusher forward against staple strips and release. **DO NOT** allow pusher to snap forward against staples.
4. Tool is now loaded and ready to be connected to an air supply for operation.
5. Reload when indicator triangles on magazine and pusher are aligned.



#### CLEARING STAPLE JAMS

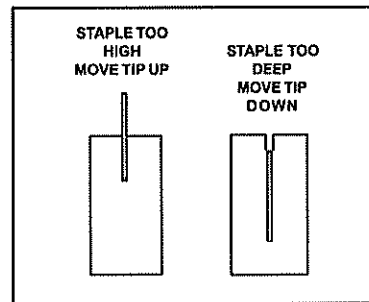
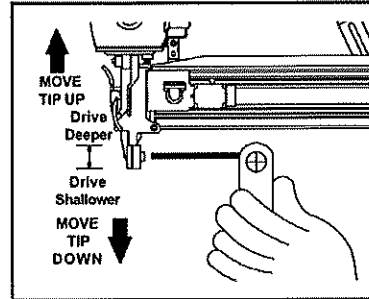
1. Disconnect tool from air supply using quick-connect coupling.
2. Pull pusher back to latched position at rear of magazine.
3. Open E-Z Clear latch and open door.
4. Remove jammed fastener.
5. Close door and secure with latch.
6. Release pusher and slide forward against staple strips.
7. Connect air supply and check tool for normal operation.



### LOADING FASTENERS

#### ADJUSTING STAPLE DRIVE

1. Disconnect tool from air supply using quick-connect coupling.
2. Loosen adjustment screw, and move tip of lower safety element up to increase fastener drive, or move down to decrease drive. Tighten screw securely.
3. Connect tool to air supply, and drive staples to check for correct depth of drive.
4. Make depth of drive adjustments as needed to maintain consistent staple driving.



## **OPERATION**

---

### **TOOL OPERATION**

#### **BUMP FIRE (CONTACT TRIP) OPERATION**

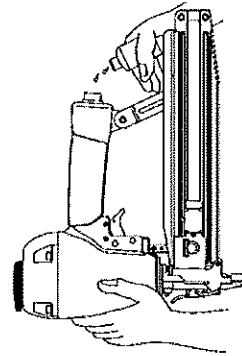
1. Position the nose of the tool over the work surface, near the area where the first fastener is to be driven.
2. Squeeze and hold the trigger in the depressed position.
3. Bump the workpiece contact (safety) against the work surface at each point where a fastener is to be driven.
4. Using a bouncing motion, continue moving the tool into position for each fastener drive.
5. When fastening is completed, release the trigger.

### MAINTENANCE

Your tool will last longer and perform better if periodic maintenance is performed. Please use the information below to keep your tool operating in top condition.

#### LUBRICATION

Disconnect tool from the air supply and remove all fasteners. Apply 2 - 3 drops of air tool oil (provided) in the air inlet two - three times a day. If the tool will be used outside in the winter, use a winter grade air tool oil to help keep frost from forming inside the tool. Do not use other types of lubricants on this tool, as other lubricants may contain chemicals harmful to o-rings and other tool components. Drain compressor tanks and hoses daily.



#### CLEANING

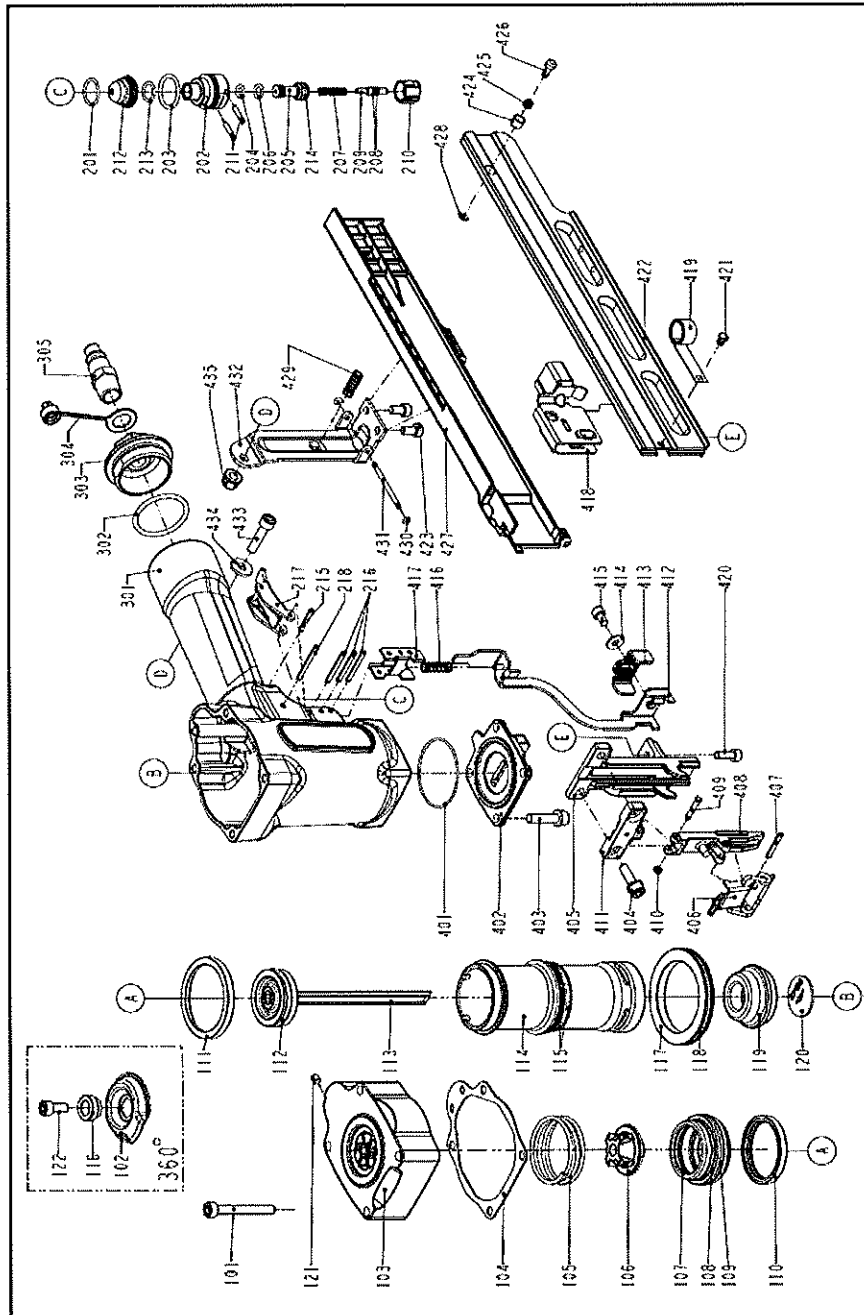
Disconnect tool from the air supply and remove all fasteners. Brush tool off using a parts cleaning brush or clean rag. Check area around trigger and workpiece contact, and clean as necessary. Pull pusher back to latched position, and brush out staple entry area of tool nose. Open E-Z Clear latch and brush out debris. Blow out confined areas around tool nose using low pressure compressed air.

#### TRIGGER CHECK

Check trigger operation daily:

1. Press the workpiece contact against a safe work surface without depressing the trigger. **THE TOOL MUST NOT CYCLE.**
2. Hold the tool above a safe work surface and pull the trigger without depressing the workpiece contact. **THE TOOL MUST NOT CYCLE.**
3. The trigger must return to the normal position each time finger pressure is released.

# PARTS SCHEMATIC



## PARTS LIST

ITEM	PART#	DESCRIPTION	QTY.	ITEM	PART#	DESCRIPTION	QTY.
101	GRBN841	HEX.SOC.HD.BOLT	4	301	GRBN860	GUN BODY UNIT	1
102	GRBN879	DEFLECTOR	1	302	GRBN320	O-RING	1
103	GRBN843	CAP	1	303	GRBN720	END CAP	1
104	GRBN844	CYLINDER CAP SEAL	1	304	GRBN605	AIR PLUG CAP	1
105	GRBN845	COMPRESSION SPRING	1	305	GRBN620	AIR PLUG	1
106	GRBN846	SEAL	1	401	GRBN861	O-RING	1
107	GRBN847	O-RING	1	402	GRBN862	BASE	1
108	GRBN848	HD.VALVE PISTON	1	403	GRBN753	HEX.SOC.HD.BOLT	4
109	GRBN849	O-RING	1	404	GRBN863	BOLT ASSEMBLY	2
110	GRBN850	COLLAR	1	405	GRBN864	BACK PLATE (DRIVER GUIDE)	1
111	GRBN851	PRESS RING	1	406	GRBN865	LOCK HANDLE UNIT	1
112	GRBN852	O-RING	1	407	GRBN690	SPIRAL PIN	1
113	GRBN853	DRIVER UNIT	1	408	GRBN866	DRIVER GUIDE COVER A	1
114	GRBN854	CYLINDER	1	409	GRBN867	FIXED PIN	1
115	GRBN275	O-RING	2	410	GRBN182	URETHANE RETAINER	1
116	GRBN880	WASHER	1	411	GRBN868	DRIVER GUIDE COVER B	1
117	GRBN855	CYLINDER SPACER	1	412	GRBN869	SAFETY B UNIT	1
118	GRBN277	O-RING	1	413	GRBN870	SAFETY A	1
119	GRBN856	BUMPER	1	414	GRBN431	FLAT WASHER	1
120	GRBN857	DRIVER GUIDE	1	415	GRBN289	HEX.SOC.HD.BOLT 6-7	1
121	GRBN305	HEX.SOC.HD.SCREW	1	416	GRBN665	SAFETY SPRING	1
122	GRBN881	HEX.SOC.HD.BOLT	1	417	GRBN871	SAFETY GUIDE	1
201	GRBN588	O-RING	1	418	GRBN872	PUSHER	1
202	GRBN556	PLUNGER CAP	1	419	GRBN873	SPRING	1
203	GRBN582	O-RING	1	420	GRBN685	BOLT ASSEMBLY	1
204	GRBN421	O-RING	1	421	GRBN874	FIXED PIN	1
205	GRBN527	VALVE PLUNGER	1	422	GRBN875	MAGAZINE A	1
206	GRBN580	O-RING	1	423	GRBN302	HEX.SOC.HD.BOLT	2
207	GRBN559	SPRING	1	424	GRBN876	DEEP IMPACT SOCKET 1	1
208	GRBN592	O-RING	2	425	GRBN657	LATCH SPRING	1
209	GRBN630	PLUNGER	1	426	GRBN656	DOOR LATCH	1
210	GRBN555	TRIGGER VALVE HEAD	1	427	GRBN668	MAGAZINE CAP	1
211	GRBN518	PIN	2	428	GRBN4	E-RING	1
212	GRBN560	COVER-PLUNGER	1	429	GRBN664	SPRING	1
213	GRBN589	O-RING	1	430	GRBN693	O-RING	2
214	GRBN423	O-RING	1	431	GRBN672	HINGE POINT	1
215	GRBN641	SPIRAL PIN	1	432	GRBN877	BRACKET UNIT	1
216	GRBN718	SPIRAL PIN	3	433	GRBN878	HEX.SOC.HD.BOLT	1
217	GRBN858	TRIGGER UNIT	1	434	GRBN574	FLAT WASHER	1
218	GRBN859	SPIRAL PIN	1	435	GRBN579	BOLT CAP	1

### GRISM2016C SPECIFICATIONS

Nose .....Solid  
 Fastener Range .....3/4" - 2"  
 Crown Width .....7/16"  
 Staple Gauge .....16 Gauge  
 Tool Weight .....4.3 lbs.  
 Max Air Pressure .....120 psi

## TROUBLESHOOTING

### TOOL TROUBLESHOOTING

Your pneumatic fastening tool has been designed for long life and trouble free operation. However, if operating problems arise, please use the troubleshooting information below to determine how to remedy the problem.

#### DANGER

Always disconnect tool from air supply before performing any service on tool. Correcting a problem while the tool is pressurized may result in injury from fastener discharge or tool operation.

#### FASTENER DRIVING PROBLEMS

PROBLEM	CORRECTIVE ACTION
<b>Fasteners do not drive completely.</b>	<i>AT TOOL: Adjust lower safety element tip up to increase nail drive depth. Add 2 - 3 drops of air tool oil to inlet.</i>
	<i>AT COMPRESSOR: Increase air pressure. Do not exceed 120 psi/8 bar</i>
<b>Fasteners do not drive completely after air pressure is increased.</b>	<i>Driver blade worn or broken. See dealer for replacement.</i>
<b>Fasteners do not drive completely when driving in quick succession</b>	<i>Inadequate air flow. Use larger diameter hose. Use compressor with larger storage tank. Keep hose lines short. Check air hose for kinks or other restrictions.</i>
<b>Fasteners drive too deeply</b>	<i>AT TOOL: Adjust lower safety element tip down to decrease nail drive depth.</i>
	<i>AT COMPRESSOR: Reduce air pressure. (Do not reduce below 70 psi/4.8 bar.)</i>



## TROUBLESHOOTING

<b>FASTENER DRIVING PROBLEMS</b>	
<b>Tool operates, but no fastener is driven.</b>	<i>Check nose for jammed fastener. Clear jam and reload magazine. Check staple strips for smooth feeding in magazine.</i>
<b>Tool won't operate staple jammed in tool nose, preventing tool from operating.</b>	<i>Remove jammed fastener. Check magazine for incorrect, bent, or loose fasteners, and discard. Reload using Grip-Rite® staples.</i>
<b>Tool leaks air.</b>	<i>Check for source of leak, and tighten fittings and screws as required. Discontinue using tool if air leaks at trigger area or from cap exhaust. Contact your dealer.</i>

### TOOL CHECKS

Keep your nailer in top working condition by checking it daily. See your Grip-Rite® dealer for service if part or operating problems are found. Never use a malfunctioning tool – it could result in serious injury.

#### **WORKPIECE CONTACT & TRIGGER**

Check workpiece contact for proper operation before each use. Workpiece contact must move freely and return to extended position when lifted from workpiece. Trigger must operate freely.

#### **DAILY INSPECTION**

- Check for broken, damaged, or excessively worn parts, and repair or replace as needed.
- Check for air leaks at trigger, cap, and nose. Disconnect tool from air supply immediately if leaks are present, and see dealer for service.
- Make sure all screws are tightened securely.

## WARRANTY



### LIMITED WARRANTY APPLICABLE TO PNEUMATIC TOOLS AND COMPRESSORS

GRIP-RITE® brand pneumatic tools bearing Serial Numbers 19070001 and above; or Serial Numbers 19400001 and above, are warranted to be free from defects in workmanship and materials for seven years from the date of purchase.

Rubber o-rings, bumpers, seals, driver blades, dipsticks, and air filters are excluded from this warranty. Pneumatic tools bearing Serial Numbers not reference above, including all legacy branded tools or "silver body" tools, are covered by a three-year warranty.

All compressors, regardless of body color, are warranted to be free from defects in materials and workmanship for one year from the date of original purchase.

If your compressor or GRIP-RITE™ pneumatic tool demonstrates a defect in workmanship or materials during the warranty period, it may be returned to PRIMESOURCE® for repair, and if it is not repairable, PRIMESOURCE® will replace it.

**These warranties will not apply if:**

- The original receipt (or copy), showing the original purchase date, is not provided with the tool or compressor sent in for warranty repair
- The tool or compressor has been misused, abused or improperly maintained
- Alterations have been made to the original tool or compressor
- Repairs have been attempted or made to the original tool or compressor by any entity other than a proprietary PRIMESOURCE® service/warranty center or authorized service/warranty center
- Non-GRIP-RITE TOOLS™/GRIP-RITE COMPRESSORS™ parts have been used
- The tool has suffered any physical damage due to the use of non-PRIMESOURCE® approved fasteners. The only approved fasteners include the following brands TIMCO, GRIP-RITE.
- Repairs are required due to normal wear and tear on the product. Normal wear and tear are not warrantable conditions
- The tool or compressor has been inadequately packaged leading to damage in transit to the service/warranty center

**THESE WARRANTIES ARE IN LIEU OF ALL OTHER WARRANTIES EXPRESS OR IMPLIED. PRIMESOURCE® EXPRESSLY DISCLAIMS ALL OTHER WARRANTIES, INCLUDING WARRANTIES OF MERCHANTABILITY AND FITNESS FOR A PARTICULAR PURPOSE (EXCEPT AS MAY OTHERWISE BE PROVIDED BY LAW).**

**PRIMESOURCE® DISCLAIMS LIABILITY FOR INDIRECT, INCIDENTAL, OR CONSEQUENTIAL DAMAGES RELATED TO THE SALE OR USE OF ITS PRODUCTS BOTH DURING AND AFTER THE WARRANTY TERM.**

These warranties give you specific legal rights, and you may also have other rights, which vary, from state to state.

#### PNEUMATIC TOOL/COMPRESSOR SERVICE INFORMATION

*Should any mechanical problems develop during the life of your equipment, the following options are available for service and parts:*

- Call (800) 676-7777 to be routed to the nearest GRIP-RITE™ distribution center and directed to the nearest authorized service/warranty center
- Log on to our website at [www.grip-rite.com](http://www.grip-rite.com) to find a list of our authorized service centers
- Contact the PRIMESOURCE® National Service Center directly at Phone: (800) 207-9259 or Fax: (800) 207-9614

#### STEPS TO TAKE WHEN SHIPPING TOOLS

- Adequately package the product to avoid damage in transit (in the case of pneumatic tools, the original blow mold plastic carrying case is considered adequate packaging)
- Provide the original or copy of the receipt showing the original purchase date
- Insure your shipment with the shipping company. PRIMESOURCE® will not be responsible for any tool or compressor that is lost or damaged by the shipper.



Distributed by  
**PRIMESOURCE**  
GLOBAL REACH. HOMETOWN SERVICE.™

USE GENUINE **GRIP-RITE**®  
FASTENERS FOR BEST  
PERFORMANCE



800-676-7777  
[www.grip-rite.com](http://www.grip-rite.com)  
[www.primesourcebp.com](http://www.primesourcebp.com)

**WE BUILD AMERICA**™

Grip-Rite is exclusively distributed by PrimeSource Building Products, Inc. Visit [www.Grip-Rite.com](http://www.Grip-Rite.com) for details, warranty information and limitations. © 2019 PrimeSource Building Products, Inc. All Rights Reserved.  
GRTSM2016C | 04/2019