

Date Code: 07/19



atomi™ Smart Plug User Manual



Watch Video
Open your smartphone camera
and point it at the QR Code

Thank you for purchasing the atomi Smart Plug.

The atomi Smart Plug is brilliantly designed to make your life easier and simple to manage. Any device you plug into the Smart Plug can be controlled through the atomi smart app.

Turn on and off lights, coffee makers, decorations and more—if you can plug it in, you can control it.

Includes:



Smart Plug



User Manual

Specifications:

Current Tap Rating: 125V~60Hz 15A 1875W (Resistive)
USB Input: 100~125V~50/60Hz 0.3A
USB Output: 5VDC/2.4A Each USB Port
Total USB Output: 2.4A max

Before you begin

1. Know your Wi-Fi network and password.
2. Make sure your mobile device is running iOS® 8 or higher or Android™ 4.1x or higher.
3. Make sure you're connected to a 2.4GHz Wi-Fi network (atomi smart app can't connect to 5GHz networks.)

Plug Overview



Light Indicator

Flashing blue rapidly:

Smart Plug is ready for setup.

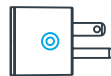
Solid blue: Smart Plug is powered on.

No light: Smart Plug is powered off.



Dual-USB Ports

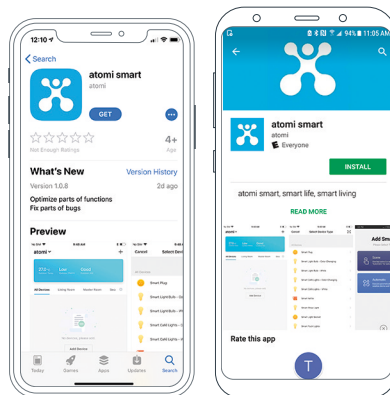
Charge two USB devices at the same time. USB ports are always powered on even when the Smart Plug is turned off.



Power Button

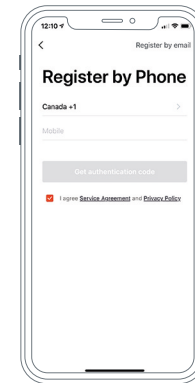
Press to manually turn Smart Plug ON/OFF.

Step 1: Download App

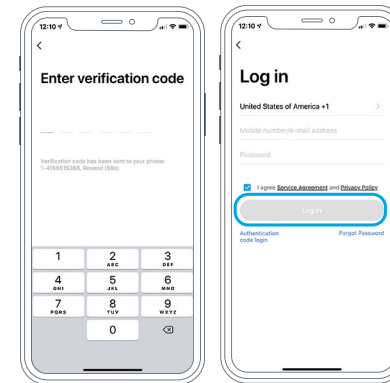


Download the atomi smart app
from the App Store or Google Play.

Step 2: Register



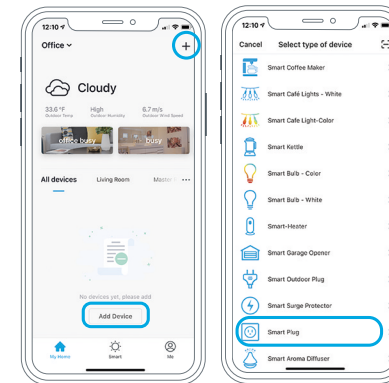
Enter your mobile phone
number or email address.



Enter the verification
code and create
a password.

Log into
the app.

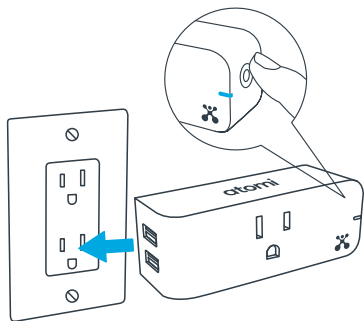
Step 3: Add Device



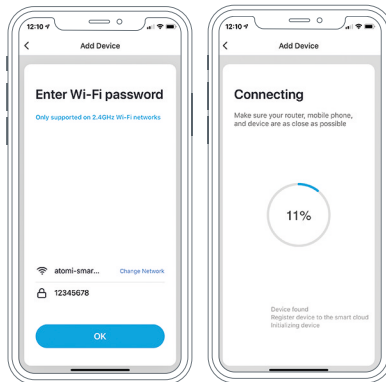
Select "Add Device"
or click (+) at the top
right corner of the
Devices screen.

Choose
"Smart Plug"
from the
Device list.

Step 4: Plug In



Plug your Smart Plug into any outlet.
Hold the power button for 10 seconds until the indicator light is flashing rapidly, then press "CONTINUE" in the atomi smart app.

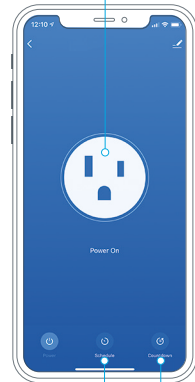


Enter your Wi-Fi network and password.

The atomi smart app will connect your device.

Controls

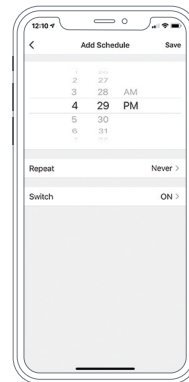
ON/OFF
Press to turn Smart Plug ON/OFF.



Schedule
Set up weekly schedules to fit your lifestyle.

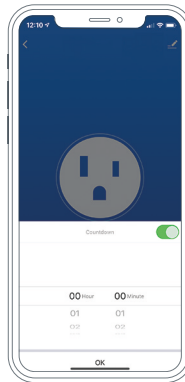
Countdown
Set a countdown to power off Smart Plug.

Scheduling



Set up weekly schedules to fit your lifestyle.

Countdown



Set a countdown to power off Smart Plug.

Troubleshooting

Cannot connect to your Wi-Fi network.

Make sure you entered the correct Wi-Fi password during the Wi-Fi setup. Check if there are problems with your internet connection. If the Wi-Fi signal is too weak, reset your Wi-Fi router and try again.

What devices can I control with the Smart Plug?

You can control lights, fans, humidifiers, portable heaters, and any small appliance in accordance with the Smart Plug's specifications.

What should I do when I can't turn devices on or off using atomi smart app?

1. Make sure the devices connected to the Smart Plug are turned ON.
2. Make sure your mobile device and Smart Plug are connected to the same network.

I'm still having trouble!

Wi-Fi networks come in a lot of shapes and sizes with many different quirks. It doesn't mean your Smart Plug is malfunctioning. If problems persist, please try these steps, in order:

1. Force quit and re-launch the atomi smart app. Check to see if this fixes the issue.
2. Unplug Smart Plug and plug it back in. Check to see if this fixes the issue.
3. Unplug your router and plug it back in. Check to see if this fixes the issue.
4. Delete and reinstall the atomi smart app. Check to see if this fixes the issue.
5. If all else fails, restore your Smart Plug to factory settings: Unplug your Smart Plug and plug it back in. Hold the power button for 10 seconds.

FCC Notice:

This device complies with Part 15 of the FCC Rules. Operation is subject to the two following conditions:

1. This device may not cause harmful interference.
2. This device must accept any interference received, including interference that may cause undesired operation.

NOTE: This equipment has been tested and found to comply with the limits for a Class B digital device, pursuant to Part 15 of the FCC Rules. These limits are designed to provide reasonable protection against harmful interference in a residential installation.

CAUTION: Suitable for indoor use only.

DO NOT IMMERSE IN WATER.

DO NOT EXCEED RATED CAPACITY.

Made in China



WARNING

This product can expose you to chemicals including Pb, which is known to the State of California to cause birth defects or other reproductive harm. For more information, go to www.P65Warnings.ca.gov.

For questions or concerns, email us at support@atomiusa.com. Manufactured and marketed by Atom, Inc., 10 West 33rd St. Suite 520, New York, NY 10001. atomi™ is a trademark of Atom, Inc. Designed by atomi in New York.

One-year limited warranty from date of purchase against defects in materials and workmanship. Google is a trademark of Google LLC. Amazon, Alexa and all related logos are trademarks of Amazon.com, Inc. or its affiliates.

Can't connect? Need help?



**DO NOT RETURN THIS
PRODUCT TO THE STORE**

Call 1-800-757-1440
Mon-Fri 9:00-5:00 EST (US)
or email support@atomiusa.com