



Home Dehumidifier

Please read the manual carefully
before using the product

PD221DE

USER MANUAL

FOR CUSTOMERS

Thank you for purchasing our dehumidifier.

Yaufey has been committed to developing powerful and easy-to-use products to bring more convenience to your life. We highly recommend you to keep this user manual for future reference in case of unexpected problems.

Please read this user manual carefully to ensure proper use of the dehumidifier. This dehumidifier is perfect for reducing humidity in family bedrooms, bathrooms, basements, offices, storage rooms and more.

Yaufey dehumidifiers reduce the room humidity efficiently, creating a more healthy and comfortable environment for you and your family.

REQUESTING CUSTOMER SERVICE

If there are any problems of the product, please contact Yaufey Customer Service at support@yaufey.com with your Purchase Order ID. We'll help you solve the problems as soon as possible.

BEFORE FIRST USE:

To protect the product from any internal damages, please keep the product in the upright position throughout its journey.

Please take out the product and leave it standing in the upright position for **24 HOURS** before plugging it in.

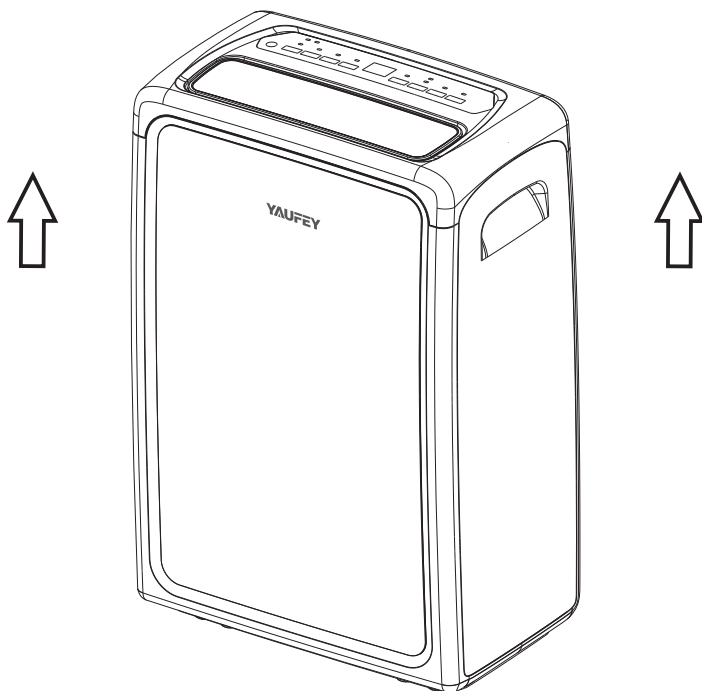


TABLE OF CONTENTS

Important Safety Instructions.....	1
Parts Description	2
Operations.....	3
Care & Cleaning.....	9
Troubleshooting.....	10
Specifications	13
Special Notes.....	14
Warranty & Contact Us	15

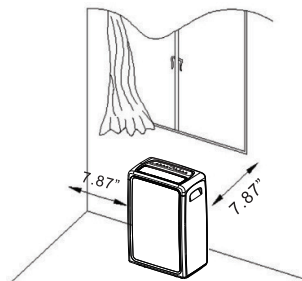
IMPORTANT SAFETY INSTRUCTIONS

IMPORTANT SAFETY INSTRUCTIONS

Safety Note:

For your safety, please read and keep the manual properly before or after using the unit. This product is only for home use. Please use the product in accordance with the instructions in this manual.

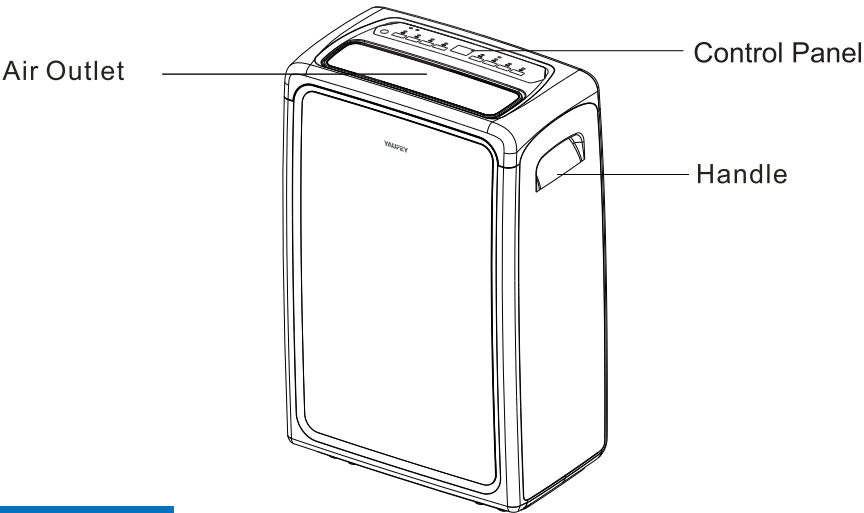
- Unplug the dehumidifier from the power source when cleaning.
- Do not splash water into the machine or put it near places where it can be splashed by water.
- Please do not place the machine near a heating device or inflammable dangerous goods.
- Do not insert your fingers or any hard materials into the air inlet or outlet.
- Drain the water according to your method (Manual or Continuous).
- Please make sure that the drain pipe is installed on a downward slope so that the water can be drained continuously.
- Please do not place the machine on uneven surfaces.
- Do not spray water on this machine.
- Do not spray pesticides or flammable liquid on this machine.
- Do not put or place heavy objects on the machine or let children and pets climb on the unit.
- Please do not place this machine in a closed narrow space.
- If the power cord is damaged, please get a technical staff of the company to replace it. The replacement must be approved.
- If you use the drying clothes function, please hang the clothe at least 15.7" above the air outlet to avoid the water drips from the clothes to damage the machine.
- The wiring of the machine must be in accordance with national wiring regulations. The power cord should be connected to a reliable external naught wire.
- The fixed wiring connected to the machine must be equipped with an all-pole disconnect device (air switch) with a contact distance of at least 3mm.
- The specification of the fuse: 3.15A.
- When using the dehumidifier, please keep other surrounding objects at least 7.87 inches away from the machine.
- Please take care of your children to make sure that they do not play with the machine.
- This machine should not be used by people without civil capacity, including those who are physically and mentally impaired, or lack relevant knowledge and experience, unless they are instructed by a professional.



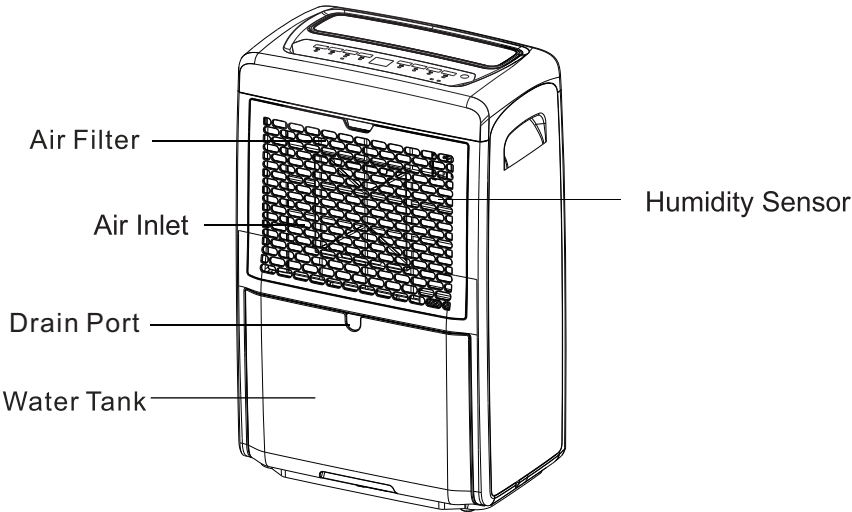
PARTS DESCRIPTION

PRODUCT STRUCTURE

FRONT



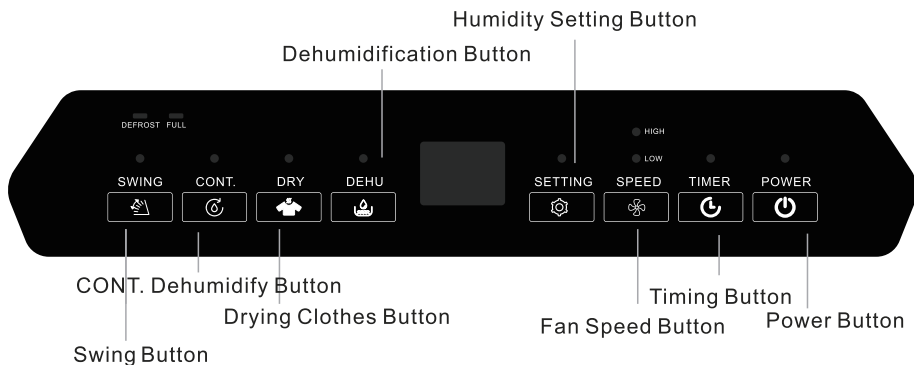
BACK



OPERATIONS

OPERATION INSTRUCTIONS

Control Panel



1. Power Button

Press this button to turn on or turn off the dehumidifier when plugged to the power outlet.

2. Timer Button

Press this button to set a timer ranging from 1 hour to 24 hours of this machine. Press the button to increase the timing by 1 hour. You can press and hold the button to select your desired timer faster.

3. Fan Speed Button

Press this button to switch the fan speed between the high and low speed.

4. Humidity Setting Button

Press this button to set the humidity level ranging from 30%RH - 80%RH. Press the button to increase 5%RH every time. You can press and hold the button to set the humidity faster.

5. Dehumidify

In the standby state, press this button once to enter the Dehumidify Mode.

6. Drying

In the standby state, press this button once to enter the Drying Clothes Mode.

OPERATIONS

7. **Continuously Dehumidify Button**

In the standby state, press this button once to enter the Continuously Dehumidify Mode.

8. **Swing Button**

Used to make swing mode start or stop.

Humidity Settings

In the standby state, you can press the "SETTING" button to set the humidity level. Pressing the button each time will increase the humidity by 5%RH. The humidity range is 30%RH-80%RH. You can press and hold the button to set the humidity faster. Leave it alone for a few seconds to exit the humidity setting.

Timer Setting

The timer setting is used to turn on or turn off the machine automatically.

Press this button to set a timer ranging from 1 hour to 24 hours of this machine. Press the button to increase the timing by 1 hour. You can press and hold the button to select your desired timer faster. If the timer is set to 00, this timing will be invalid.

When the timing function is enabled, the display will show the current humidity and the remaining time.

Speed Setting

Press this button to switch the fan speed between the high and low speed.

Swing the Fan

In the standby state, you can press "SWING" button to let the fan blades swing back and forth. Press the button again to stop the fan swinging. When the machine is turned off, the fan will also stop swinging.

Working Mode

Dehumidify Mode: In this mode, you can set a desired room humidity. When the actual room humidity is higher or lower than that you have set, the machine will start working automatically. Drying Clothes Mode: In this mode, the air comes out of the compressor and fan to dry your clothes. The fan speed cannot be adjusted. Continuously Dehumidify Mode: In this mode, the fan speed can be adjusted, while the humidity cannot.

OPERATIONS

Full Tank Protection

When the water tank is full, the bucket full indicator will light up and the machine will auto shut off. After emptying the tank, please put it back into the machine and the machine will turn on again.

Defrost Function

The machine will automatically defrost when it determines that there is a frost in the machine.

Action: The fan will ran at a high speed and the compressor will stop working.

Display: The defrost indicator will light up.

Action Description

Dehumidify Mode:Power-on state: The fan starts to work and the compressor will start to work a few seconds laterPower-off state or set humidity reached: The compressor will stop working immediately and the fan will stop working a few seconds later. If power outage occurs, the compressor may start to work within 3 minutes after the fan starts to work.

Drying Clothes Mode: The compressor and fan will work in the same way with the Dehumidify Mode.

Status Description

In the standby state, the power indicator will light up. When the compressor is delayed to start to work, the power indicator will flash blue.

When the ambient humidity reaches the set value, the compressor will stop dehumidifying and the digital tube and power indicator will flash blue. It is the same in Drying Clothes Mode. The high fan speed or low fan speed indicator will light up depending on the fan speed you choose.

The ‘Swing’ indicator will light up when the “Swing” function is enabled. The timer setting indicator light will flash when you have set a timer.The defrost indicator will light up when the machine is defrosting.

The full tank indicator will light up when the water tank is full or it is not placed properly.

When the machine malfunctions, the digital tube will display fault codes.

FAULT & PROTECTION CODES:

Problems	Analysis of Causes	Solutions
Humidity always shows "25% RH" but there is a big difference from the actual humidity.	Does the humidity sensor fail?	Set the humidity to 30% RH and check if the dehumidifier can work normally. If it does, the machine is in a good condition.
		Repair or replace the humidity sensor.
Humidity always shows "99% RH" but there is a big difference from the actual humidity.	Is there some water on the surface of the humidity sensor?	The dehumidifier can work normally. The moisture removal effect is not affected.
		Please keep the machine working for a while to remove the water on the humidity sensor surface. The machine will work normally when the water is removed.
		Repair or replace the humidity sensor.

If the malfunctions still exist, please don't hesitate to contact Yuafey Customer Service at support@yaufeiy.com for help.

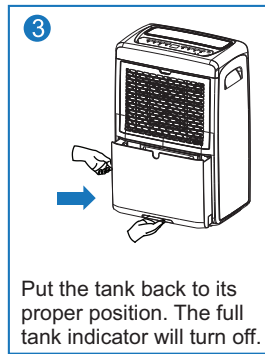
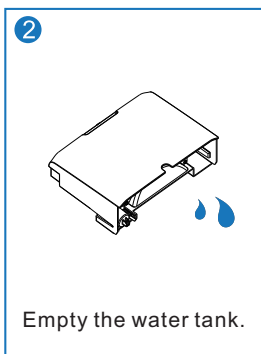
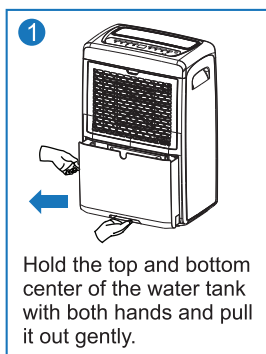
Notice:
Before turning on the machine, please be sure to have opened the air outlet. Otherwise, the machine will overheat. Do not unplug the power cord directly to turn off the machine.

OPERATIONS

Drainage

When the water bucket is full, the full bucket indicator will light up and the machine will stop working automatically. You should empty the tank and put it back to its proper position.

Emptying the Water Tank



NOTE:

Put the empty bucket back into the unit and once seated correctly, the unit will start up again.

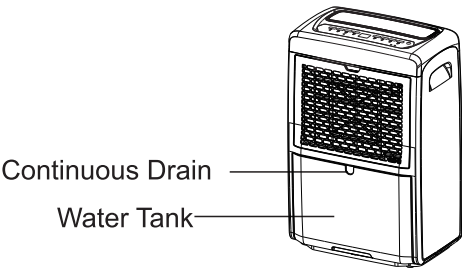
You should hear a click when the bucket is in the correct position. Do not remove the float in the bucket, otherwise the sensor will not be able to sense the water level properly, resulting in that the water will overflow from the bucket when the bucket is full.

Caution: Please place the water tank in the right position. Otherwise, it may cause full tank alert.

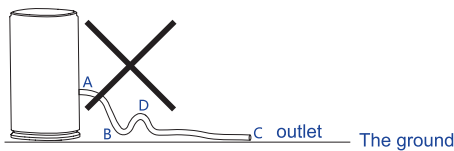
OPERATIONS

Continuous Drainage

You can connect a drain pipe to the continuous drain port to continuously drain the water from the water tank.

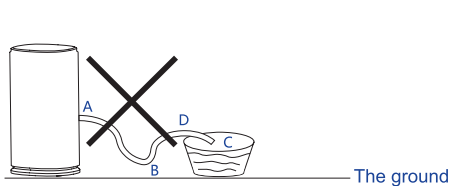


Picture 1: Example of improper installation.



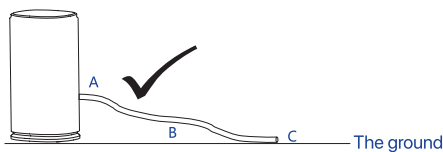
- The drain pipe arches upward at point D higher than point B. Air and water are prone to appear in the water pipe, which makes the water unable to be drained out smoothly through the pipe.

Picture 2: Example of improper installation.



- The contacting point D between the drain pipe and the container is lower than the continuous drain port A, but higher than the lowest point B of the pipe. Air and water are prone to appear in the water pipe, which makes the water unable to be drained out smoothly through the pipe.
- The water outlet C of the drain pipe should not be inserted into the water.

Picture 3: Example of proper installation.



The picture is for reference only.

- The water passes through the continuous drain outlet A all the way to point B and point C. You can use a container to collect the water or drain it into the sewer. (The outlet C should be lower than the continuous drain outlet A at least 3.97 inches, and it is not recommended to extend the original drain pipe).

CARE AND CLEANING

CARE AND CLEANING OF THE DEHUMIDIFIER

WARNING

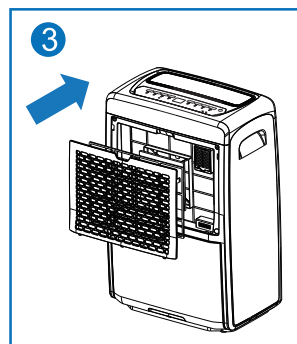
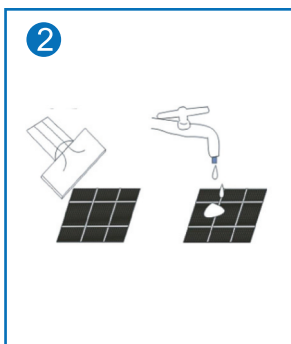
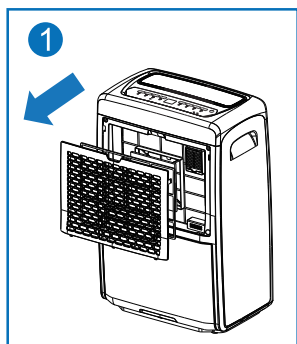
Turn off the dehumidifier and unplug it from the wall outlet before cleaning.

1. Clean the bucket

Clean the bucket with water every two (2) weeks.

2. Clean the air filter

Clean the filter with clean water at least once every 30 days.



3. Storing the dehumidifier

When not using the dehumidifier for long periods of time.

- After turning off the dehumidifier, wait one day before emptying the bucket.
- Clean the main dehumidifier, bucket and air filter.
- Wrap the cord and bundle it with the band.
- Cover the dehumidifier with a plastic bag.
- Store the dehumidifier upright in a dry, well-ventilated place.

CAUTION:

DO NOT operate the dehumidifier without a filter. Because dirt and lint will clog it and reduce performance.

TROUBLESHOOTING

Before requesting Yaufey customer service, please check the following list for troubleshooting first. These abnormal conditions are not the result of defective workmanship or materials in this dehumidifier.

Problems	Possible Causes	Troubleshooting
Dehumidifier does not work	The power cord is unplugged.	Make sure that the unit's plug is inserted properly into the power outlet.
	Is the full tank indicator flashing? (The tank is full or it is in a wrong position.)	Empty the water in the water tank and then reposition the tank.
	Is the room temperature above 95°F (35°C) or below 41°F (5°C).	The machine cannot work in an overheat or cold environment. It will automatically shutdown to protect itself.
	Is the room temperature between 41°F (5°C) and 68°F (20°C) ?	When running under lower ambient temperature, the machine will automatically defrost, it is a normal phenomenon. Wait until the defrost process finish, it will restart dehumidifying again.
	The dehumidifier is in the defrosting process.	It is normal the compressor ceases while defrosting process. Wait until the defrost process finish, it will restart dehumidifying again.
	Does the room humidity is lower than or reach the preset humidity level? (The room humidity has reached the preset humidity level, the dehumidifier enters into Standby Mode and the LCD and indicators will flash.)	Please set the humidity 5% lower than the room humidity or set the humidity to 30% RH.
	There is prevent frequent start function in the machine. Dose the machine stop working just now?	Please wait for more than 3 minutes.
	Room humidity is low.	The machine is designed to work in the humidity range of 30% RH to 80% RH. It will not work if the humidity is not within this range.

TROUBLESHOOTING

Dehumidifier does not dry the air as it should	The air filter is dirty.	Clean the air filter.
	Is the air inlet or air outlet obstructed?	Remove the obstruction from the air inlet or outlet.
	The dehumidifier size is too small for application.	Increase the quantity of dehumidifier. Or change a higher capacity dehumidifier.
	Poor air circulation.	Please leave about 7.9inch(20cm) around the product.
	Did not allow enough time to remove the moisture.	Allow enough time to remove the moisture. When first installed, allow at least 3-4 days to maintain the desired RH.
	The room has not been sealed properly.	Check that all doors, windows and other openings are securely closed.
	The room temperature is too low or the ambient temperature is below 41°F (5°C) (The machine will not work or it dehumidifies very slowly in low temperature).	Please wait the temperature rises above 5°C or higher.
The dehumidifier makes loud noise when operating	The dehumidifier is not positioned level.	Move the machine to a horizontal position.
	Is there blocking around the air inlet? The air filter is clogged.	Clean up the dirt on the air inlet and outlet.
	Is the filter installed correctly?	Please check to see if the filter package is removed and it is installed properly.
Dehumidifier operates continuously	Check if the dehumidifier is in CONTINUOUS MODE.	Don't set the humidity too low. Typically, 40-50% are good settings to use.
	Room humidity is too high.	Change humidity settings or replace the machine with a higher-capacity dehumidifier.
	Doors and windows are open.	Ensure that all doors, windows and other openings are closed.

TROUBLESHOOTING

Overflow of water on floor	The connection between the hose and port may be loose.	Connect the hose with the drain outlet tightly.
	The water tank is not installed properly.	Re-install the water bucket properly.
	The float of the water tank has sunk.	Move the float and make sure it can swing freely.
	The magnet on the float has come off.	Put the magnet in right position.

Please contact Yaufey Customer Service at support@yaufey.com if the dehumidifier still does not operate or operate abnormally when you have tried the above solutions.

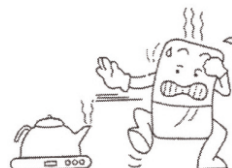
SPECIAL NOTES



- 1 When using the machine, please do not put it on a soft or uneven ground to prevent vibration and movement.



- 2 Do not insert any thin rods or hard items into the machine to prevent malfunctions and dangers.



- 3 When using the machine, please keep it away from any heating furnaces, electric kettles and other heating sources.



- 4 When using the machine, please close doors and windows for the optimal moisture removal effect.



- 5 Please do not put any objects around the machine. The dehumidification effect will be affected if the ventilation is bad.



- 6 Please unplug the machine from the power source if you do not use it for a long time.



- 7 When cleaning the machine, please use wet cloth to wipe gently. Do not spray water on it directly.



- 8 Please do not put any objects on the dehumidifier.



- 9 Please clean the filter every two weeks. Do not use hot water above 104°F, alcohol, gasoline or toluene.



- 10 When using the hose to drain continuously, please place the hose horizontally and make sure it is even and not wined.



- 11 After cleaning the filter, please do not dry it under direct sunlight to prevent it from deforming.




- 12 Before moving or carrying the machine around, please empty the water tank first.

SPECIFICATIONS

SPECIFICATIONS

Model No.	PD221DE
Power Source	120V~60 Hz
Rated Power(95°F, 90% RH)	320W
Rated Current(95°F, 90% RH)	2.8A
Moisture Removal(65°F, 60% RH)	14.7 Pints/Day(7L/Day)
Moisture Removal(80°F, 60% RH)	22.4 Pints/Day(10.6L/Day)
Moisture Removal(86°F, 80% RH)	42.7 Pints/Day(20.2L/Day)
Moisture Removal(95°F, 90% RH)	55 Pints/Day(26.2L/Day)
Input Power(65°F, 60% RH)	195W
Input Current(65°F, 60% RH)	1.8A
IEF(65°F, 60% RH)	1.45 liters/kWh
Motor FLA	0.35A
Motor Compressor	RLA:3.8A; LRA:10.6A
Refrigerant	R134a (5.29 ozs)(150g)
Maxlmum Allowable Pressure	363 PSIG(2.5MPa)
High Pressure	232 PSIG(1.6MPa)
Low Pressure	90 PSIG(0.62MPa)

If have any change for specification and design,please forgive will not specfy additionally.

 **WARNING:**
This product can expose you to chemicals including Styrene and its compounds, which is known to the State of California to cause cancer and birth defects or other reproductive harm. For more information go to: www.P65Warnings.ca.gov

WARRANTY AND CONTACT US

Warranty

Yaufey offers a 12-month warranty to all of our products together with the original proof of purchase when a defect occurred, including those newly purchased and unused, from Yaufey or through an authorized reseller, wholly or substantially, or as a result of faulty manufacturing parts, or workmanship during the Warranty Period.

The warranty does not apply if damage is caused by other factors, including but without limitation of:

- (a) Normal wear and tear;
- (b) Abuse, mishandling, accident or failure to follow operating instructions;
- (c) Exposure to liquid or infiltration of foreign particles;
- (d) Servicing or modification of the product other than by Yaufey.

There are our general terms for the warranty service, but we always encourage our customers to contact us if any issues, regardless of warranty terms. If you are experiencing an issue with Yaufey product, you can reach out to us at support@yaufey.com, we will dedicate our efforts to resolve it for you.)

Extend Your Warranty by 1 Year

Register your product at www.yaufey.com to extend your 1-year warranty by an additional year.

*Please fill out all required fields and include your Order ID, Date of Purchased if applicable.

Customer Support

If you have any questions or concerns about our product, please feel free to contact our expert support team. Yaufey customer service is ready to help.

Yaufey Office

13211, Spring Street Baldwin Park, CA, US

Email: support@yaufey.com

Live Chat: www.yaufey.com

Support Hours

24 Hours available

YAUFEY

For FAQs and more information please visit:

www.yaufey.com



@Yaufey



@Yaufey



@Yaufey



@Yaufey



(Scan the QR Code for Live Chat)

We are expecting to see our products fulfill your life and hear your voice.

Your satisfaction means a lot to us.

Please tag us if you share a snap on your social media.

www.yaufey.com