

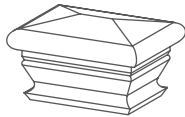


HIDE IT WITH STYLE

Box Contents

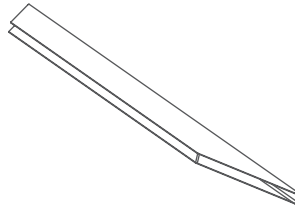
ZP19047

A



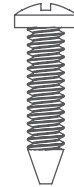
Post Cap (4)

B



Post Anchor (4)
 $\frac{3}{4}'' \times 1\frac{1}{4}'' \times 20''$

H



$\frac{3}{4}''$ Self-Tapping
Stainless Steel Screw (16)
>Bag A

C



Vertical Picket (20)
 $\frac{5}{8}'' \times \frac{5}{8}'' \times 52\frac{1}{2}''$

D



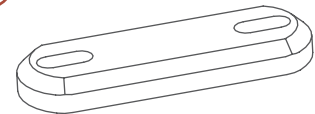
Post (4)
 $\frac{7}{8}'' \times 1\frac{1}{2}'' \times 56\frac{1}{2}''$

I



1" Self-Drilling
Stainless Steel Screw (4)
>Bag B

J



Joiner Clip (2)

E



Horizontal Picket (28)
 $\frac{1}{4}'' \times 1\frac{1}{4}'' \times 32\frac{1}{2}''$

K



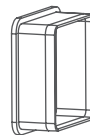
$\frac{1}{8}''$ Steel Drill Bit (1)

F



Horizontal Rail (4)
 $1\frac{1}{2}'' \times 1\frac{1}{2}'' \times 36''$

G



Rail End Cap (8)
(4 loose, 4 installed)