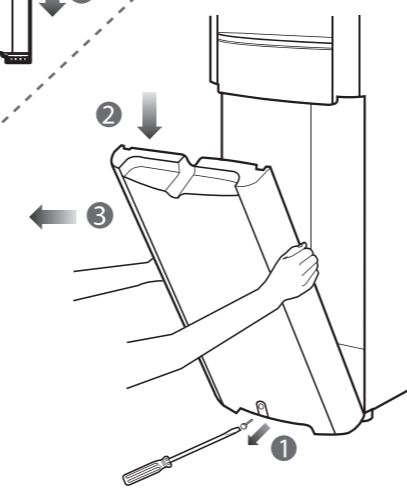
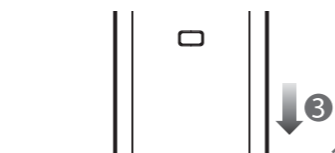


REV.NO	REVISION NOTE	SPEC.NO	DATE	SIGNATURE
①	업체 요청으로 인한 내용 수정 변경 EVERPURE FILTER 6,7 항목 내용 삭제	PD302-12092	20120821	Kwon Byeong woo
②				
③				
④				

Installation Guide [How to replace new filter]

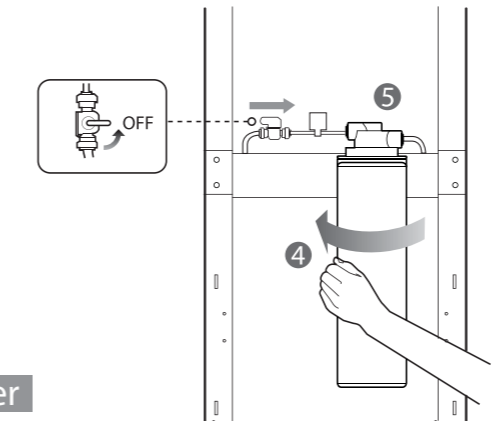
5PH

1. Unscrew at the bottom of cooler.
2. Bend upper front panel with your hands.
3. After tok sound, slightly lean the cooler backward and push lower front panel downward.



7PH

1. Loosen a screw.
2. Push the cabinet down.
3. Pull it out.

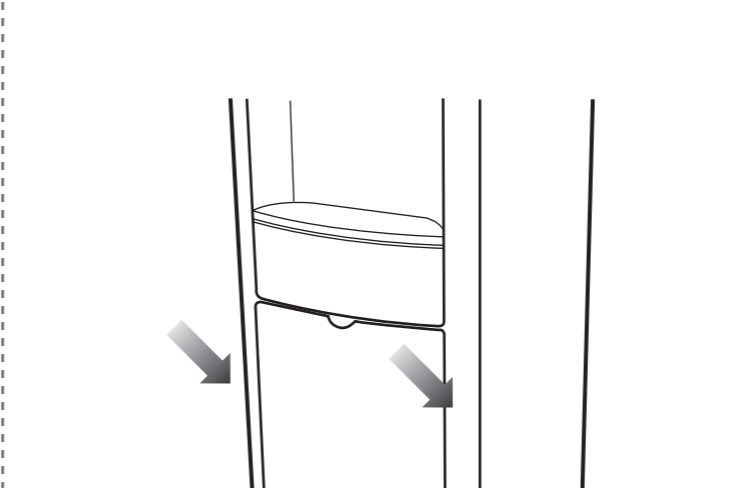


Everpure Filter

4. Turn the lever On/Off valve to stop water flow.
5. Twist the filter counter clockwise and pull downward to remove it.

Omnipure Filter

4. Twist the filter counter clockwise and pull downward to remove it.

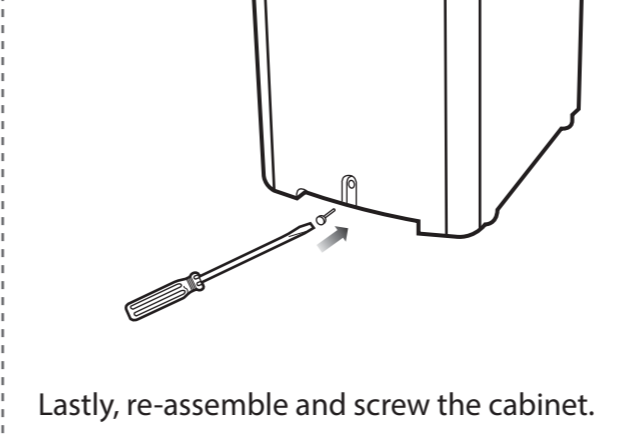


Everpure Filter

6. Push the bottom of 11-month-timer.

Omnipure Filter

5. Put the new filter and turn the filter clockwise.



Lastly, re-assemble and screw the cabinet.

6. Put the new filter and turn the filter clockwise.
7. Re-turn the lever of valve for allowing water to flow.

150

11-123-003



주기

01. 재질 : 아트지 100g
02. 색상 : 1도 (PANTONE BLACK C)
03. 인쇄방식 : Rotary letter_press (or Sealling)
04. 외곽선은 절단선 임 (Edge cut)
05. 1P 단면
06. 검사기준은 설계의 승인을 득한 한도조건본에 준함.

NO	11-123-003	MANUAL,E,AQUVERSE	아트지 100g			Q'TY	WEIGHT	REMARK
PROD	Q.A	UNITS	MM	SCALE	N / S	TITLE		
		DRWN	DEND	CHKD	APRD	FILTER MANUAL, E, AQUVERSE		
MOLD						D16A, D16B, D17A, D17B		
				DWG.DAY	DWG.NO	11-123-003		
				2011.12.19				