

SANIBEST® Pro Grinder

CONNECTIONS



TOILET



SINK



SHOWER



BATHTUB



LAUNDRY
SINK



WASHING
MACHINE

APPLICATIONS



RESIDENTIAL

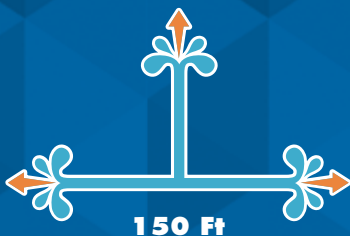


COMMERCIAL



PUMPING DISTANCE

25 Ft



150 Ft



INSTALLATION BEHIND THE TOILET



Example of installation. Follow local plumbing codes for actual install.

INSTALLATION BEHIND THE WALL



Example of installation. Follow local plumbing codes for actual install.

The Sanibest Pro is a 1 HP pump system used to install a complete bathroom up to 25 feet below the sewer line, or even up to 150 feet away from a soil stack. It incorporates a grinder system which is ideal for uncontrolled environments in both residential and commercial applications (ie. rental unit, offices, warehouses, etc). The Sanibest Pro is designed to handle sanitary products that may have been flushed down the toilet; such may consist of condoms, sanitary napkins, q-tips, dental floss, etc.

- Discharges the waste through a 3/4" or 1" rigid pipe. A non-return valve is included on the discharge elbow assembly provided with the system. This elbow can be rotated 360 degrees depending on the discharge installation.
- Has been designed with a 1-1/2" vent connection on the top of the lid. All plumbing codes require connection to a vent system. Please note that the vent system should be a two-way air vent as air needs to freely flow both ways. Note: The use of mechanical vents, air admittance valves or similar devices is not permitted.
- Must be connected to Saniflo's 1.28 GPF / 4.8 LPF rear discharge toilet. These toilets come in round and elongated (ADA compliant) models. More technical information on page 6.
- Will also discharge gray water from any sink, bath/shower, urinal and even a washing machine (indirect connection). The wastewater will drain into the system via two 2" inlets with built-in check valves on either side of the housing. Note that when adding a bathtub/shower, the base should be raised up by a minimum of 8" off the floor.
- An easy access service panel is located on top of the pump. This will give you easy access to the electrical components such as the capacitor, microswitch, electronic board and membrane. For a full list of parts, please refer to the next page.



Toilet Tank

(Part N° 005)

Insulated 1.28 GPF / 4.8 LPF toilet tank equipped with all internal valves. For more information, please turn to page 6.

Round/Elongated Bowl

(Part N° 083 or 087)

Rear discharge toilet with 16 3/4" seating height (Elongated bowl is ADA compliant). For more information, please turn to page 6.

Extension Pipe

(Part N° 030)

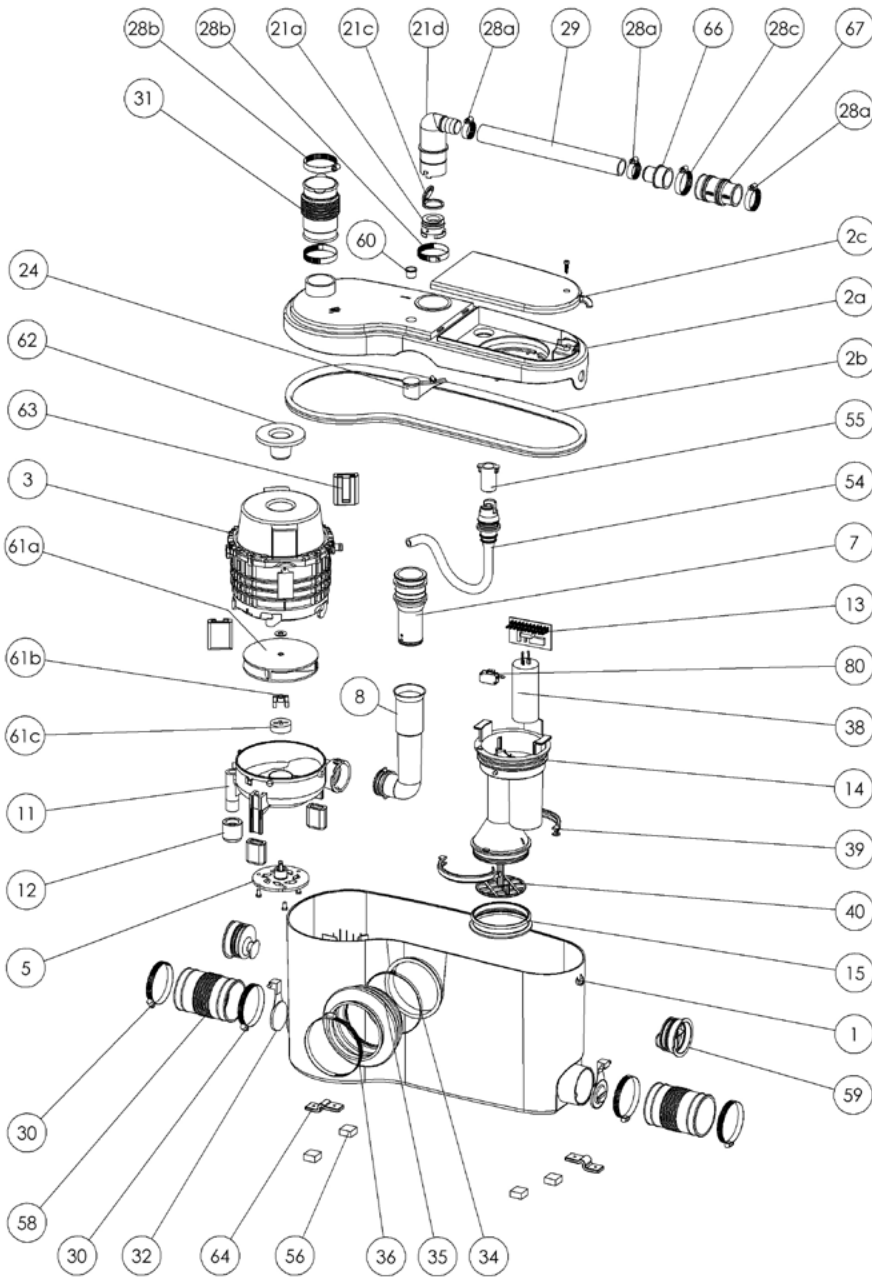
18" long PVC pipe with internal gasket used to hide the pump behind the wall. For more information, please turn to page 51.

Sanibest Pro

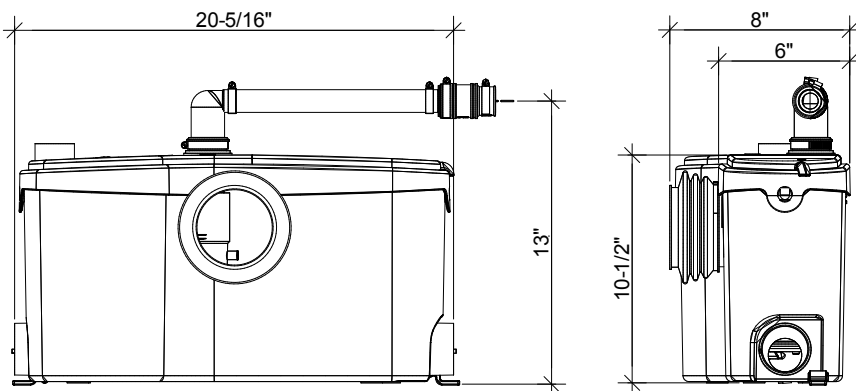
(Part N° 013)

1 HP grinder pump for commercial applications that is able to handle the accidental flushing of sanitary napkins from full bathroom applications.

**PLEASE CALL US TOLL-FREE AT
800-571-8191 (US) / 800-363-5874 (CDN)
TO PURCHASE PARTS REFERENCED BELOW**



DIMENSIONAL DRAWINGS



Choose any shower, bathtub or sink and enjoy your dream bathroom.

TECHNICAL SPECIFICATIONS

Pump type:

Grinder

Electrical:

120 V – 60 Hz / 9 Amps (Max)

Motor:

1 HP oil-filled thermally protected motor

Capacitor rating:

60 microfarad

Operating Temperature:

104°F (110°F Max.)

Power cord length:

49 inches

Noise level:

≤ 63 dBA (Lp) (measured at 3 ft.)

Discharge pipe diameter:

3/4" or 1"

Discharge rate at 25 ft:

19 GPM

Discharge rate at 3 ft:

38 GPM

Shut-off head:

38 ft.

Normal running time:

10-12 seconds

Capacity:

3.2 gallons / 12.1 liters

Inlets:

2" (side), 1-1/2" vent (top)

Method of activation:

Membrane/microswitch

Shower/bathtub base height:

8" min

Weight:

28 lbs / 12.7 kg

Certifying agencies:

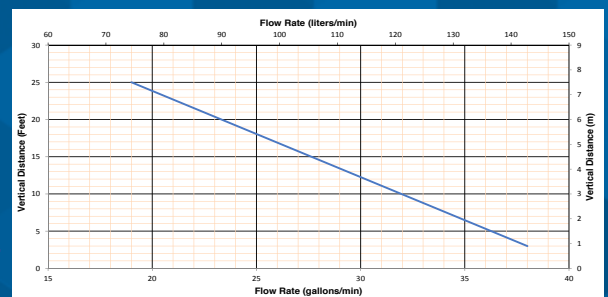
CSA (IPC, NSPC), IAPMO (UPC)

Recommended accessories:

Descaler, Sanialarm

Connections:

Rear outlet toilet, sink, shower/bathtub, washing machine (indirect connection via laundry sink)





SANIFLUSH TWO-PIECE ELONGATED TOILET SYSTEM

ADA Compliant Close-Couple Toilet – 1.28 GPF (4.8 Liter Flush)

SANIFLUSH 087 & 005

✓ **087 Elongated Bowl**

- Vitreous china
- Integral P-trap and a rear outlet spigot
- Seating height: 16-3/4" (ADA Compliant)
- Large 3" trapway
- Wash down style toilet
- Low flush toilet; it uses 1.28 gallons (4.8 L) per flush
- Toilet supplied with a set of lag screws, plastic anchors and china protectors
- Water spot measures 4 1/2" x 3 3/4"
- 1 Year limited warranty

✓ **005 Toilet Tank**

- Vitreous china
- Insulated tank to prevent condensation
- The zero re-fill fill valve is easily adjustable
- The flush valve has a silicone flapper seal
- Tank is not designed to be used with refill hose thus not provided.
- Water level mark applied to the overflow tube
- Toilet tank supplied with bowl screws, washers and wing nuts
- 1 year limited warranty
- Warranty for fill and flush valve as per manufacturer

Nominal Dimensions

31" x 17-3/4" x 28-3/4"
(787mm x 451mm x 730mm)

Fixture Dimensions and Hydraulic Performance - Meets or Exceeds the Following Specifications

- ANSI/ASME A112.19.2M and CAN/CSA B45 Requirements
- IAPMO/UPC Certificate of Listing
- EPA WaterSense labeled

Notes

- Available in white only
- Includes soft-close toilet seat along with mounting hardware kit (Part# US3ESEAT)
- Replacement fill valve recommended – Fluidmaster 400A or equal (not supplied)



Elongated Bowl with Tank (087 & 005)

Care & Cleaning

- When cleaning toilet, wash it with mild soapy water or liquid cleaners that are not chlorine or bleach based. Avoid using harsh detergents.
- We do not recommend the use of in-tank cleansers. Products containing chlorine can cause damage to components inside the tank and cause them to fail prematurely.



MEETS THE AMERICAN WITH DISABILITIES ACT GUIDELINES AND ANSI A117.1 REQUIREMENTS FOR ACCESSIBLE AND USABLE BUILDING FACILITIES. CHECK WITH LOCAL CODES.





SANIFLUSH TWO-PIECE ELONGATED TOILET SYSTEM

ADA Compliant Close-Couple Toilet – 1.28 GPF (4.8 Liter Flush)

SANIFLUSH 087 & 005

Drawings and Dimensions

