

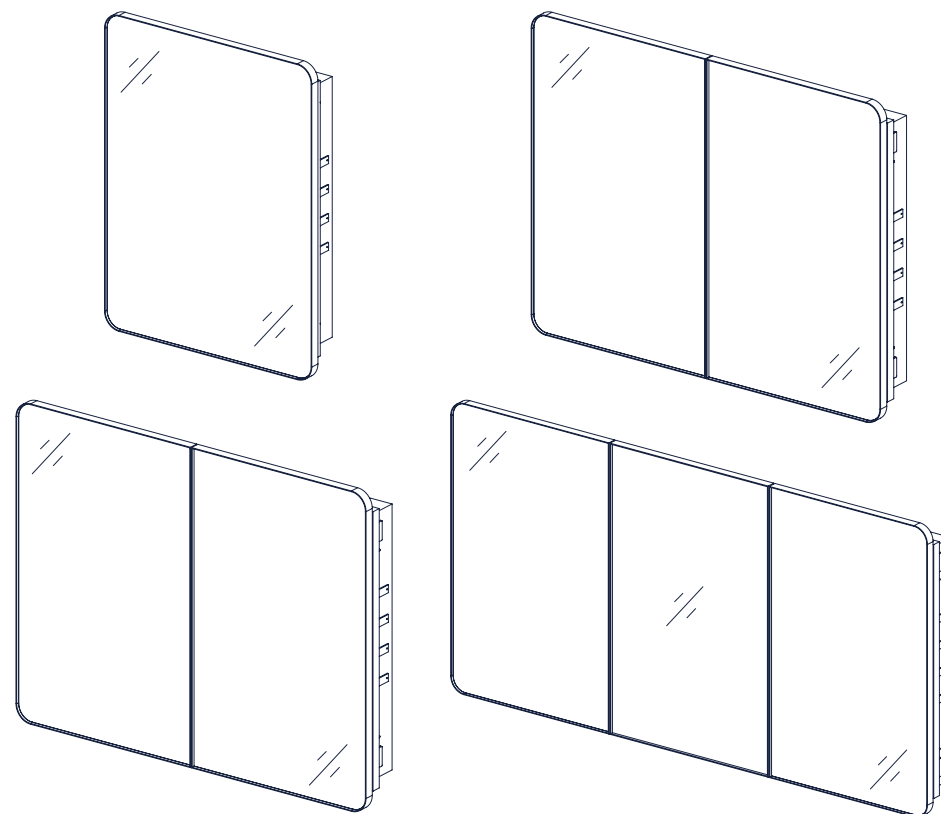
Specifications

Size	Dimension	Types of Medicine Cabinet
16" x 24"	40 x 61 x 13 cm	Single-door
20" x 26"	51 x 66 x 13 cm	Single-door
20" x 32"	51 x 81 x 13 cm	Single-door
24" x 32"	61 x 81 x 13 cm	Single-door
30" x 32"	76 x 81 x 13 cm	Single-door
40" x 32"	101 x 81 x 13 cm	Double-door
48" x 32"	121 x 81 x 13 cm	Triple-door
60" x 32"	152 x 81 x 13 cm	Triple-door

Warranty: 2 years from the date of purchase



INSTALLATION MANUAL



If you have any questions, please feel free to contact us on
sales@keonjinn.com

BATHROOM MEDICINE CABINET










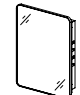
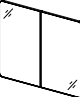
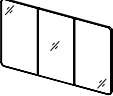
Contact Us

After opening the package, please inspect the product immediately and see if there is any damage or missing parts. If there is, please feel free to **contact us** by sales@keonjinn.com or **find us at Amazon** by following steps:

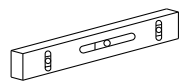



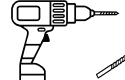


- Open "Orders" at Amazon, find the product you have purchased and open the product page;
- Click Sold by "Keonjinn", and click "Ask a question" on the redirected page;
- Click "An order I have placed" in the chat with Seller Messaging Assistant ;
- Click in sequence "Your product", "Other", "Troubleshooting" from available options, you will see a message box after that.

Please leave us a message, and we will reply within 24 hours.

Packing List

									
	4+1	4+1	4	4	4	4+1	4+1	8+1	1
	4+1	4+1	4	4	4	4+1	4+1	8+1	1
	6+1	6+1	6	6	6	6+1	6+1	8+1	1

Tools Required

			
Level Ruler	Marker	Hammer	Tape Measure
			
Electric Drill	Phillips Screwdriver	Safety Goggles	

Before Installation

Thank you for choosing Keonjinn products. To ensure the best experience, **please read carefully and follow the instructions provided below before assembling and installing the product.**

1. Important Safety Instructions:

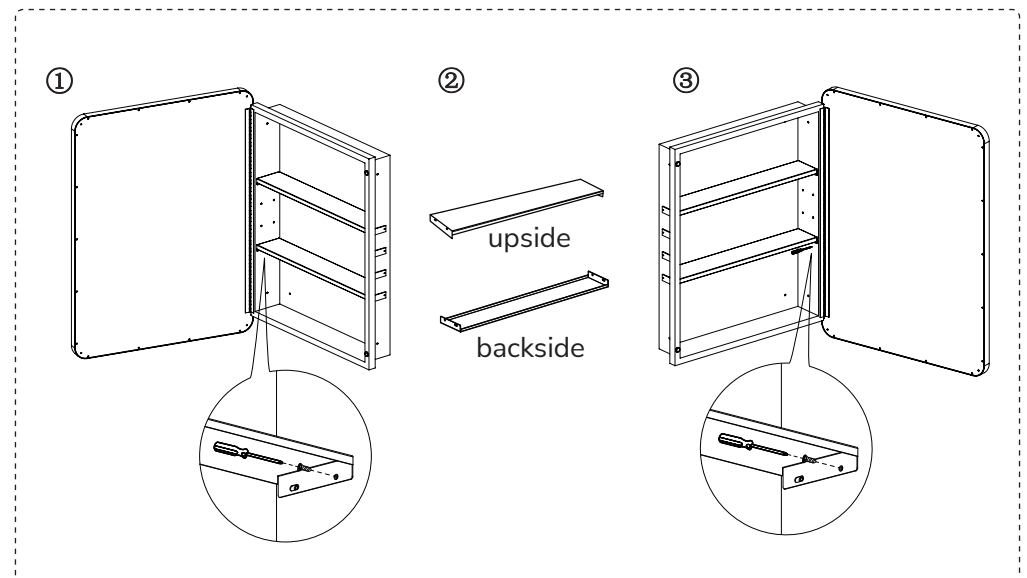
- Assembly by two or more adults is highly recommended, in order to ensure proper installation.
- Make sure that the fixing location can support the weight of the entire fixture (e.g. solid stone or brick walls).
- To prevent injury, the product must be installed according to the instructions provided.

2. Pre-assembly:

- Inspect the product immediately upon receipt for any transit damage or missing parts.

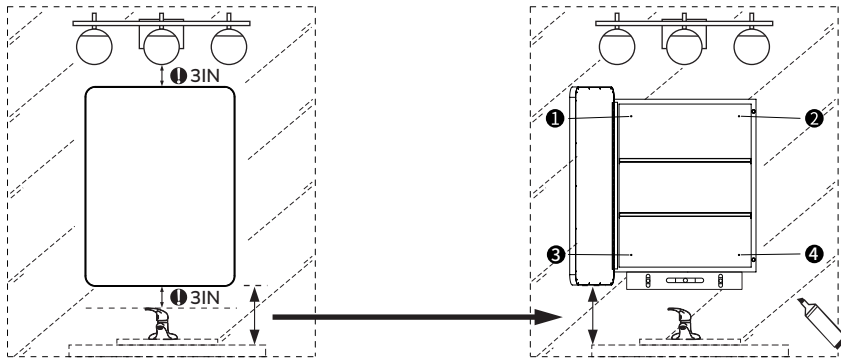
3. Before Installation:

- Please confirm whether your medicine cabinet would be mounted with the door open to the left or right. If you want it open to the right, then detach ① and flip the shelves ②, and turn the cabinet upside down ③ before installation. (Shelves are adjustable in cabinets of 32" or higher.)



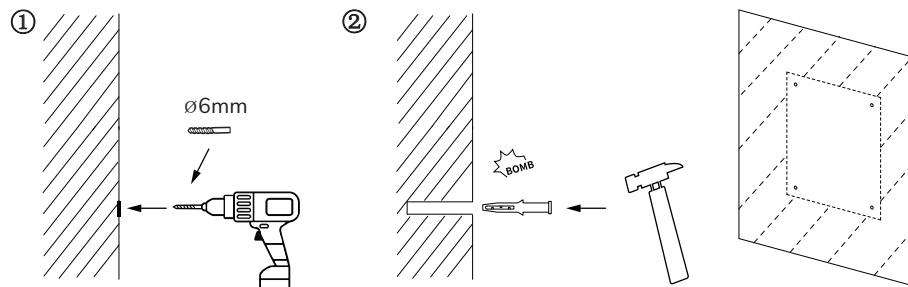
Single-Door Cabinet: Wall-Mounted

1. Confirm the locations for drilling holes with the positioning ruler and a level ruler, and use a marker to mark the spots ①②③④ on the wall.



NOTE: Please hang the cabinet at least 3 inches above the faucet.

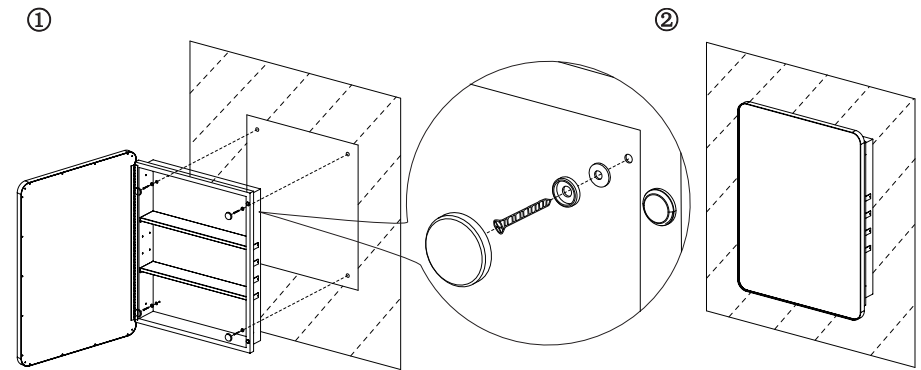
2. Use an electric drill to punch holes at the marked spots (①), then apply the 4 wall anchors with a hammer (②).



Thickness Of Wall :	Recommended Drill Bit :
>5/8" (16mm)	1/4" (6mm) drill bit, drilling depth in 1 31/32" (50mm)
5/16" (8)-5/8" (16mm)	25/64" (10mm) drill bit
<5/16" (8mm)	Unapplicable

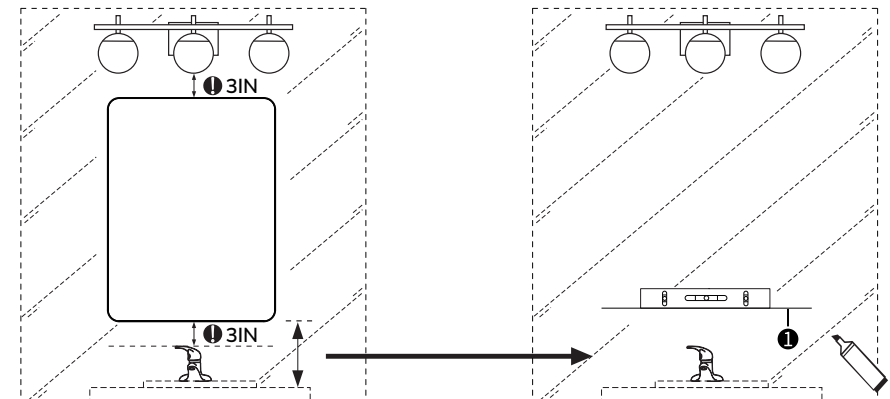
NOTE: Please wear goggles and pay attention to your safety while drilling.

3. One person lifts up the medicine cabinet and aligns it to the screw holes (①), while another person secure the medicine cabinet to the wall with the 4 screws (②).



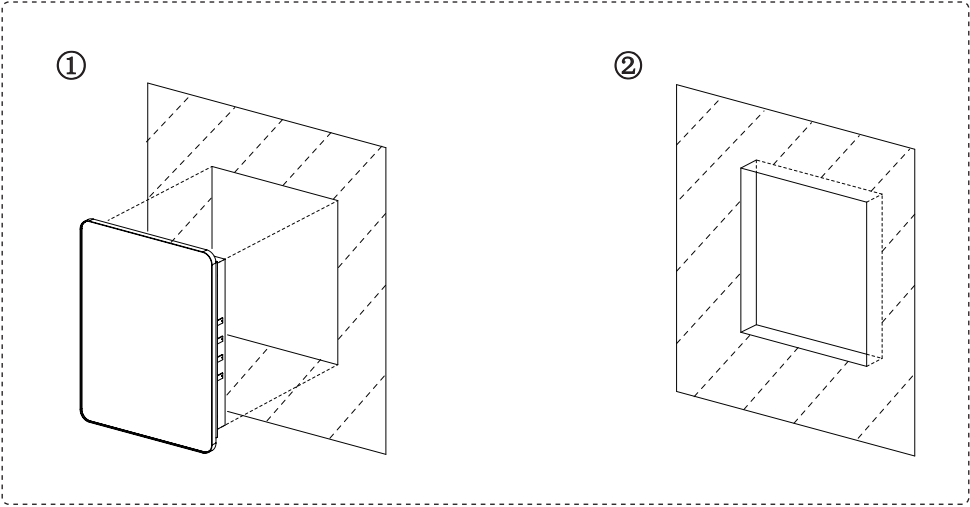
Single-Door Cabinet: Recessed

1. Confirm the location for installation, and draw a line on the wall with a level and marker to indicate where the cabinet bottom is.



NOTE: Please hang the cabinet at least 3 inches below the light and above the faucet.

2. Based on the drawn line in step 1, measure the length, width and depth of the cabinet back, and mark them on the wall (①). Cut the drywall as per the marks and remove the cutout (②).

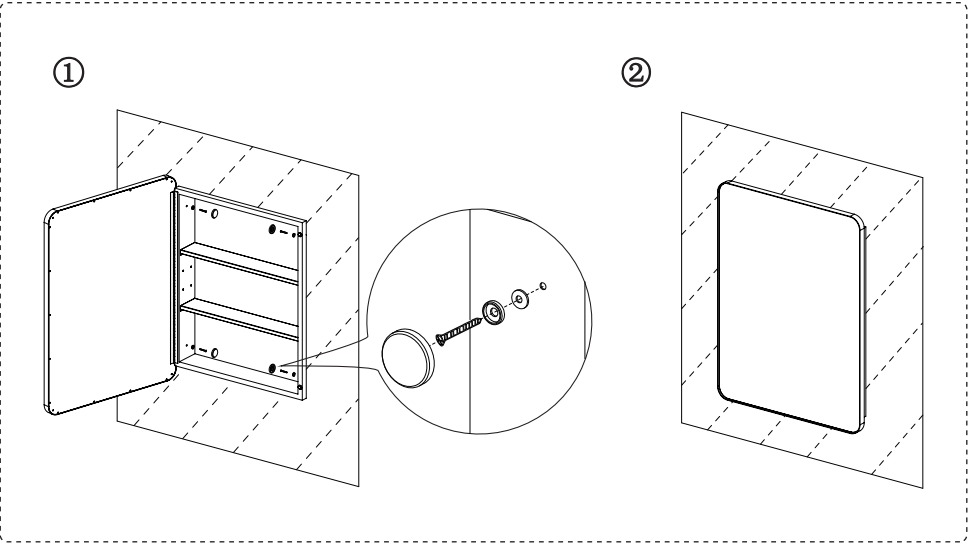


3. Mark spots for wall anchors, and use an electric drill to punch holes at the spots (①), then apply the 4 wall anchors with a hammer (②).

The diagram shows two steps, ① and ②. Step ① shows a drill being used to create a hole in a wall, with a label indicating a 6mm diameter. Step ② shows a hammer being used to install a wall anchor into the hole. A table below provides recommended drill bit sizes based on wall thickness.

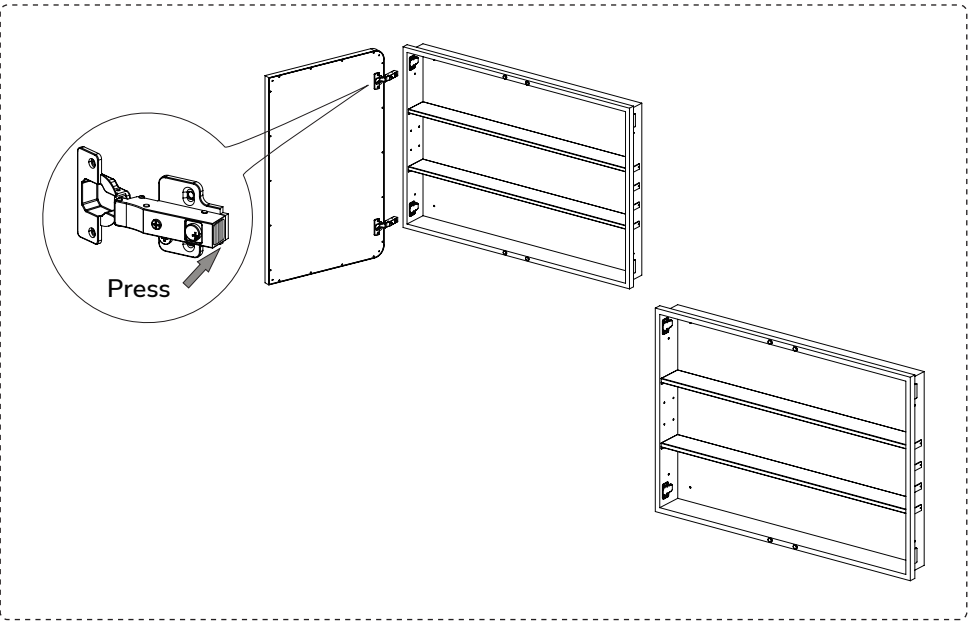
Thickness Of Wall :	Recommended Drill Bit :
> 5/8" (16mm)	1/4" (6mm) drill bit, drilling depth in 1 31/32" (50mm)
5/16" (8)-5/8" (16mm)	25/64" (10mm) drill bit
< 5/16" (8mm)	Unapplicable

4. Put the cabinet in the drywall together (①) and secure the cabinet with screws (②).

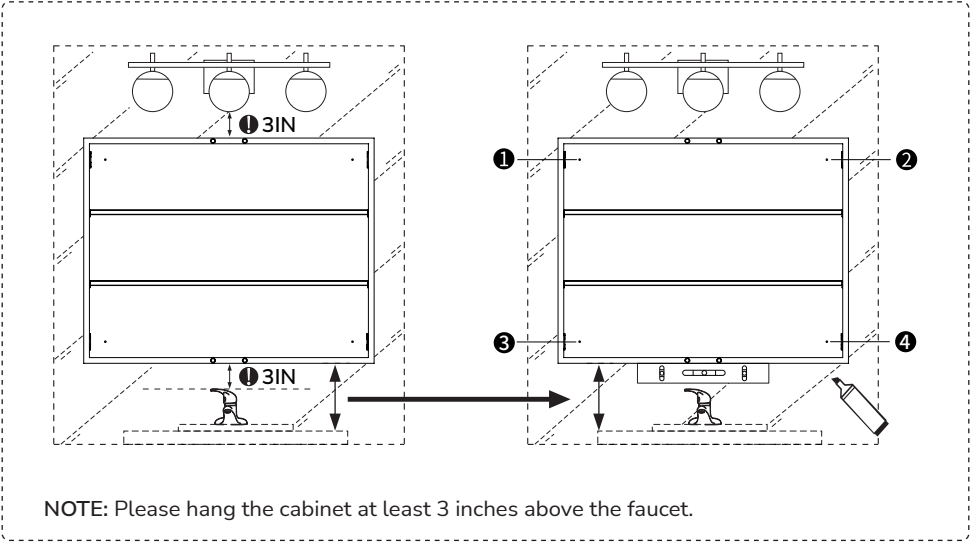


Double/Triple-Door Cabinet: Wall-Mounted

1. Before your installation, remove the cabinet door first by detaching the hydraulic hinges.



2. Confirm the locations for drilling holes with the positioning ruler and a level ruler, and use a marker to mark the spots ①②③④ on the wall.



3. Use an electric drill to punch holes at the marked spots (①), then apply the 4 wall anchors (6 anchors for a triple-door cabinet) with a hammer (②).

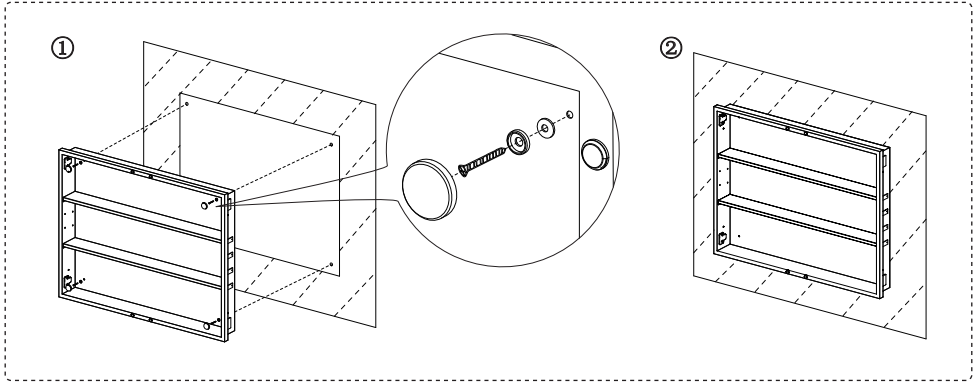
①

②

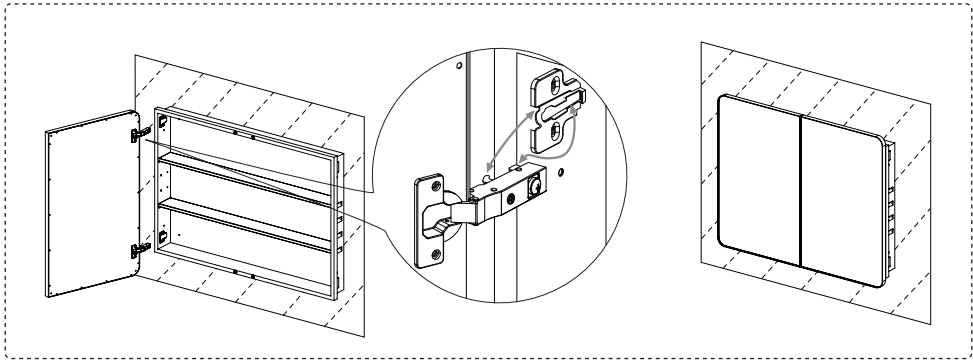
Thickness Of Wall :	Recommended Drill Bit :
>5/8" (16mm)	1/4" (6mm) drill bit, drilling depth in 1 31/32" (50mm)
5/16" (8)-5/8" (16mm)	25/64" (10mm) drill bit
<5/16" (8mm)	Unapplicable

NOTE: Please wear goggles and pay attention to your safety while drilling.

4. One person lifts up the medicine cabinet and aligns it to the screw holes (①), while another person secure the medicine cabinet to the wall with the 4 screws (②) (6 screws for a triple-door cabinet).

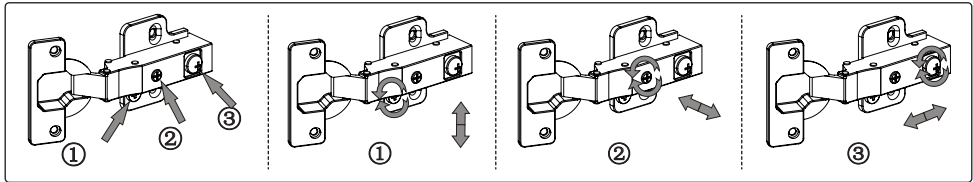


5. Reinstall the cabinet door by attaching hydraulic hinges.



How to Adjust Hydraulic Hinges

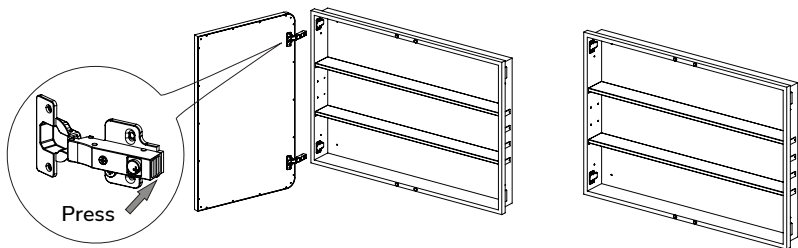
- Turn screw ① to release the mounting plate from the cabinet, allowing the door to be moved up and down;
- Turn front screw ② to adjust the depth of door overlay;
- Turn the eccentric screw ③ to adjust the gap between the door and cabinet.



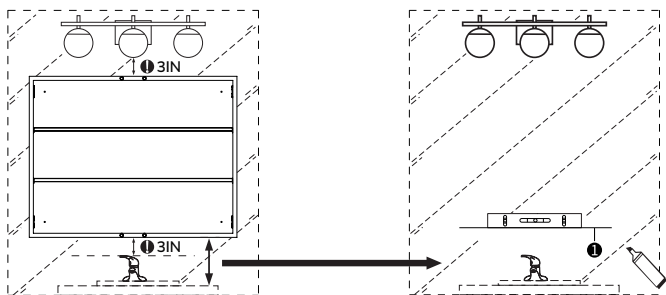
NOTE: No hydraulic hinges are applied in single-door medicine cabinets, which adopt piano hinges instead.

Double/Triple-Door Cabinet: Recessed

1. Before your installation, remove the cabinet door first by detaching the hydraulic hinges.

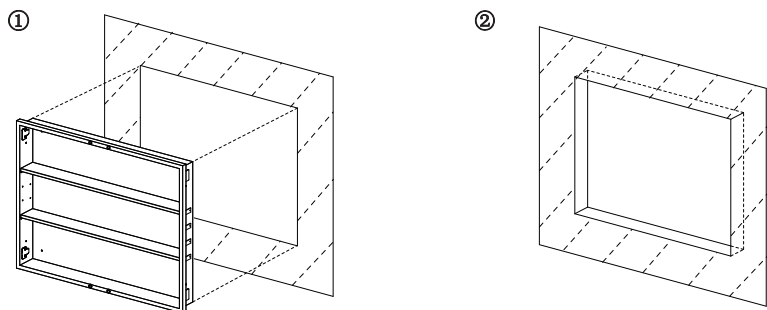


2. Confirm the location for installation, and draw a line on the wall with a level and marker to indicate where the cabinet bottom is.

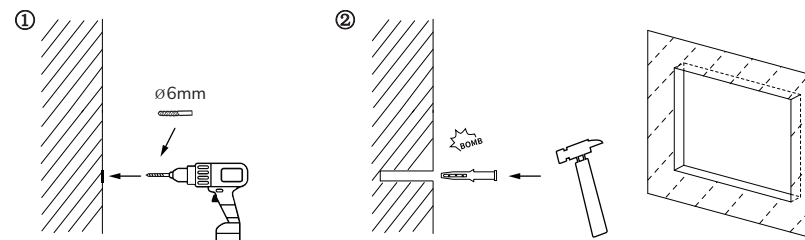


NOTE: Please hang the cabinet at least 3 inches below the light and above the faucet.

3. Based on the drawn line in step 2, measure the length, width and depth of the cabinet back, and mark them on the wall (①). Cut the drywall as per the marks and remove the cutout (②).

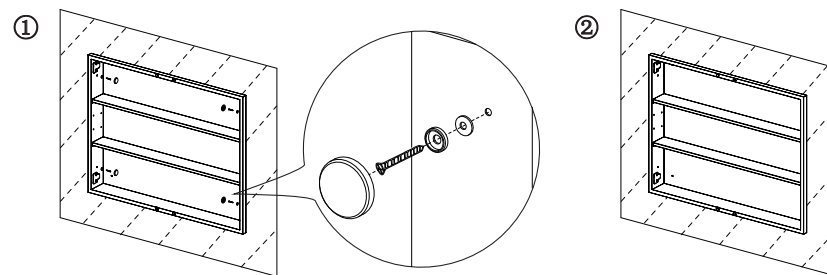


4. Mark spots for wall anchors, and use an electric drill to punch holes at the spots (①), then apply the 4 wall anchors with a hammer (②).



Thickness Of Wall :	Recommended Drill Bit :
> 5/8" (16mm)	1/4" (6mm) drill bit, drilling depth in 1 31/32" (50mm)
5/16" (8)-5/8" (16mm)	25/64" (10mm) drill bit
< 5/16" (8mm)	Unapplicable

5. Put the cabinet in the drywall together (①) and secure the cabinet with screws (②).



6. Reinstall the cabinet door by attaching hydraulic hinges.

