

BEFORE YOU BEGIN



Scan for easy 3D instructions
Download the BILT app before you begin



Download on the App Store | GET IT ON Google Play



EASY ASSEMBLY AND OPERATION INSTRUCTIONS
22SV23269 Hovering Witch

READ AND SAVE THESE INSTRUCTIONS FOR FUTURE REFERENCE

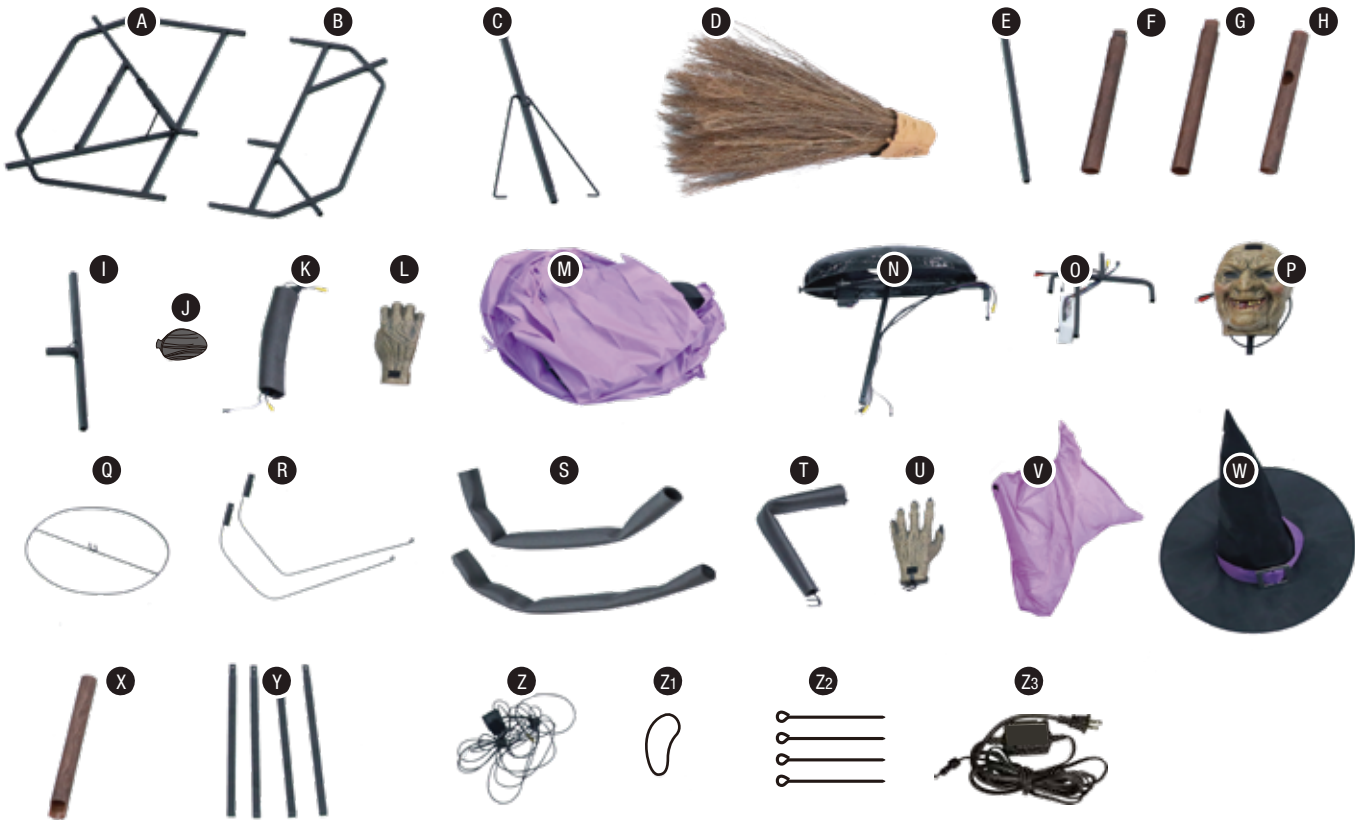
ASSEMBLY REQUIRES AT LEAST 2 ADULTS, 3 ADULTS ARE RECOMMENDED. PLEASE FOLLOW THE STEP BY STEP GUIDE AND ENJOY YOUR HOVERING WITCH!
IF ANY PART IS MISSING OR BROKEN, DO NOT ATTEMPT TO ASSEMBLE THE PRODUCT AND CONTACT SVI CUSTOMER SERVICE FROM 8:30AM TO 5:30PM PST AT 1-855-428-3921, EMAIL CUSTOMERSERVICE@SVIUS.COM, OR CALL HOME ACCENTS HOLIDAY CUSTOMER SERVICE FROM MON-FRI 8:00AM TO 7:00PM AND SAT 9:00 AM TO 6:00 PM EST AT 1-855-HDHOLIDAY (1-855-434-6543).

IMPORTANT TIPS:

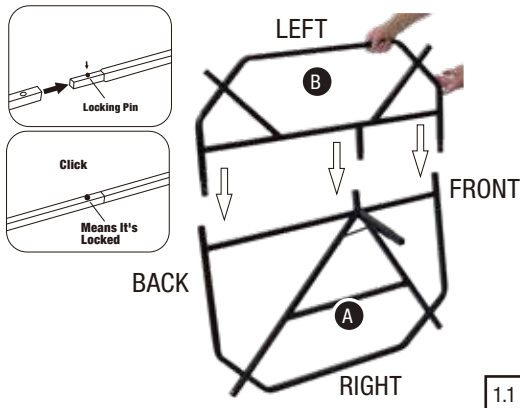
- Ensure that item's adapter is plugged in with the screw cap tightened at the Function Control Box and plugged in the wall.
- Ensure that the switch on the function control box is on the desired setting.
- If not functioning properly (ex: eyes & body don't light up), ensure that cables are connected to their corresponding cable as shown in the instruction sheet.
- Be sure nothing is blocking movement or caught in moving parts.
- Ensure that the floor or surface that the item sits on is flat and level.
- Ensure that the volume is not all the way down.
- Be sure nothing is blocking the sensor. Witch only speaks on SENSOR setting. See Operations Instructions page 5 for complete details.
- If the item still does not work, contact SVI Customer Service from 8:30am to 5:30pm PST at 1-855-428-3921, email customerservice@svius.com, or call Home Accents Holiday Customer Service from Mon-Fri 8:00am to 7:00pm and Sat 9:00 am To 6:00 pm EST at 1-855-HDHOLIDAY (1-855-434-6543).

PARTS LIST

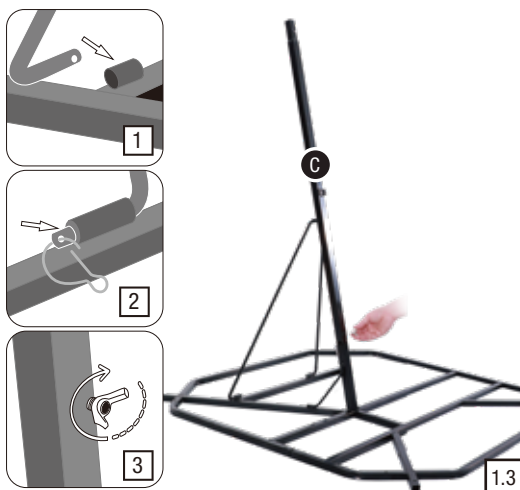
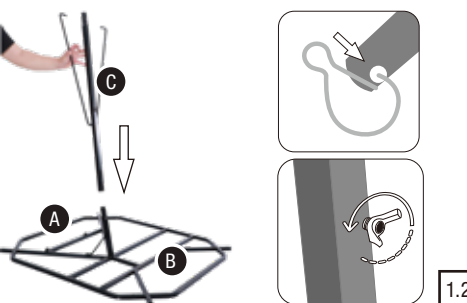
- A. Right Base Half x 1
 - B. Left Base Half x 1
 - C. Lower Support Pole x 1
 - D. Broom Bristles x 1
 - E. Support Pole x 1
 - F. Broom Stick Bottom x 1
 - G. Broom Stick Middle x 1
 - H. Broom Stick Upper x1
 - I. Upper Support Pole x 1
 - J. Broom Stick Cap x 1
 - K. Right Arm x 1
 - L. Right Hand x 1
 - M. Costume x 1
 - N. Upper Torso Frame x 1
 - O. Lower Torso Frame x 1
 - P. Head x 1
 - Q. Hip Hoop x 1
 - R. Leg Frames x 2
 - S. Foam Tubes x 2
 - T. Left Arm x 1
 - U. Left Hand x 1
 - V. Cape x 1
 - W. Hat x 1
 - X. Broomstick Top x 1
 - Y. Base Extensions x 4
 - Z. Adapter Receiver x 1
 - Z1. Elastic Band x 1
 - Z2. Stakes x 4
 - Z3. Adapter * x 1
- * Power Adapter Spec
Input: 120VAC 50/60Hz
Output: 5.9V 2.0A



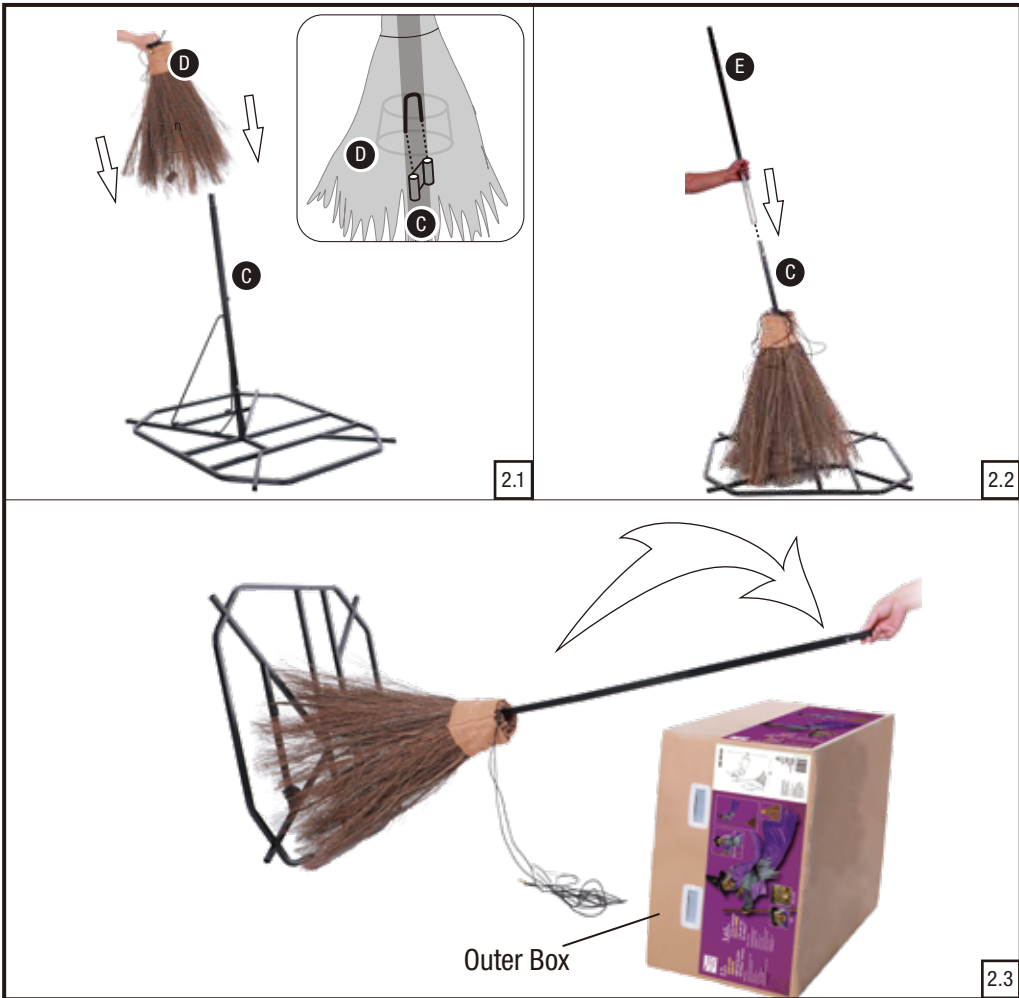
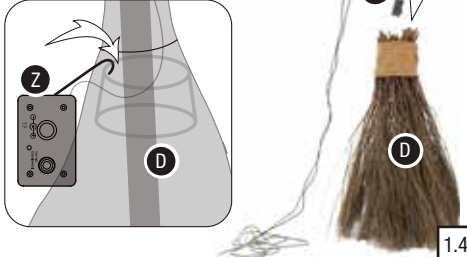
NOTE: Throughout the instructions, Right and Left are from the character's point of view.



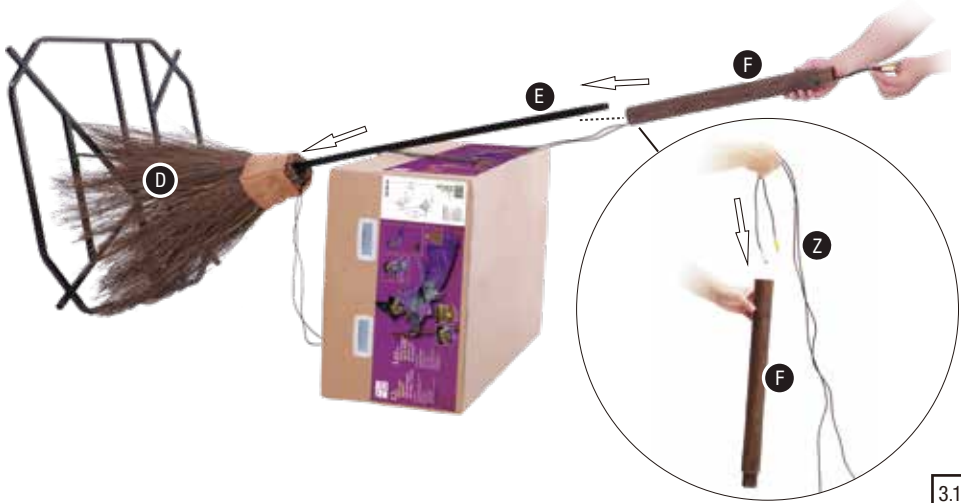
NOTE: Remove wing nut from the (A) Right Base Half before attaching the (C) Lower Support Pole. Remove clips from the struts of the (C) Lower Support Pole before attaching to the (A) Right Base Half.



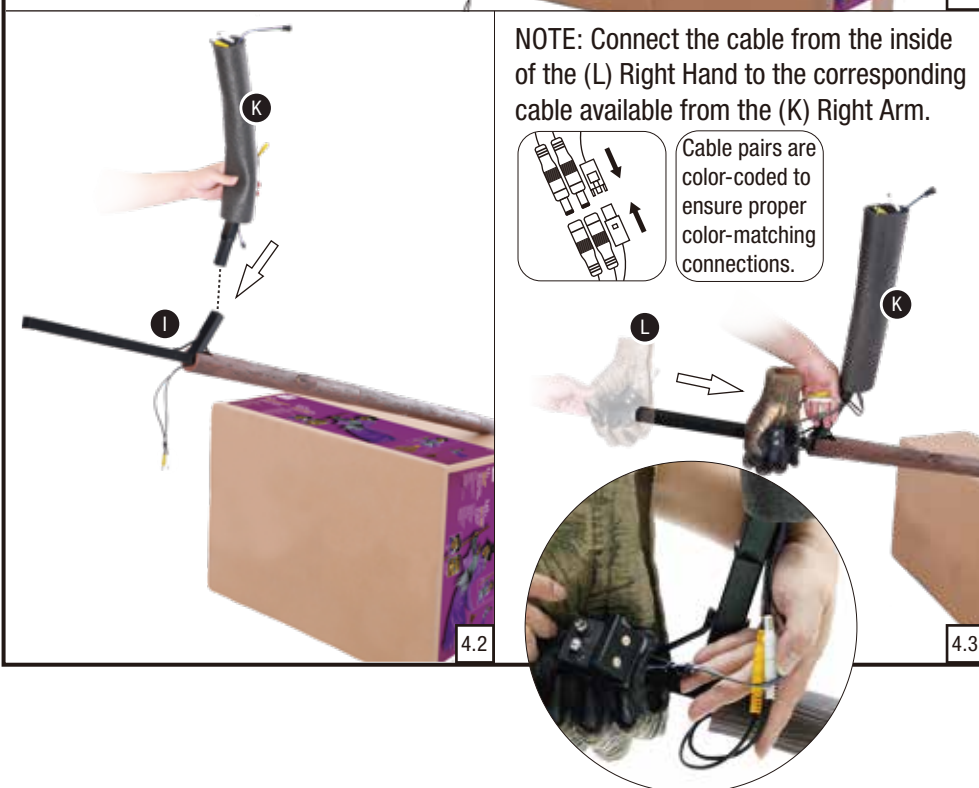
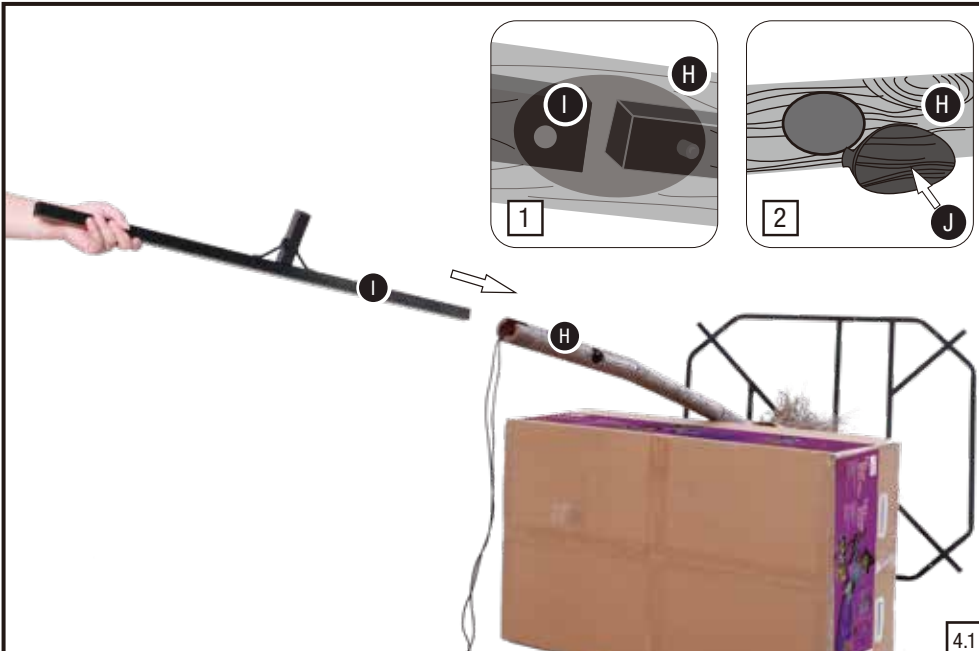
NOTE: Place the block of the (Z) Adapter Receiver in the (D) Broom Bristles with the remaining cable emerging from the top. Hang the (Z) Adapter Receiver inside of the (D) Broom Bristles on the frame.



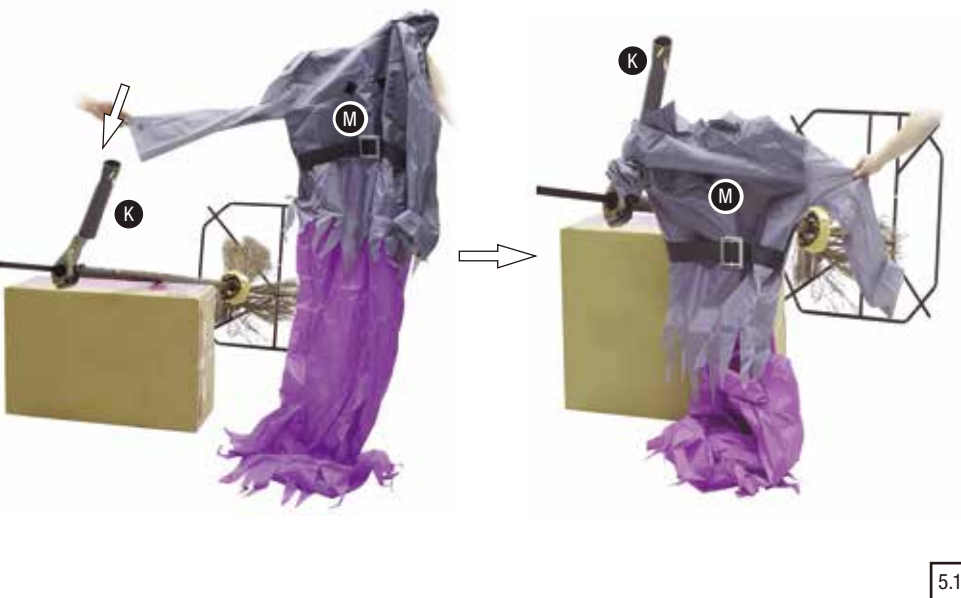
NOTE: Guide the (Z) Adapter Receiver cable through the (D) Broom Bristles and (F) Broom Stick 1 before sliding (F) Broom Stick 1 onto the (E) Support Pole.



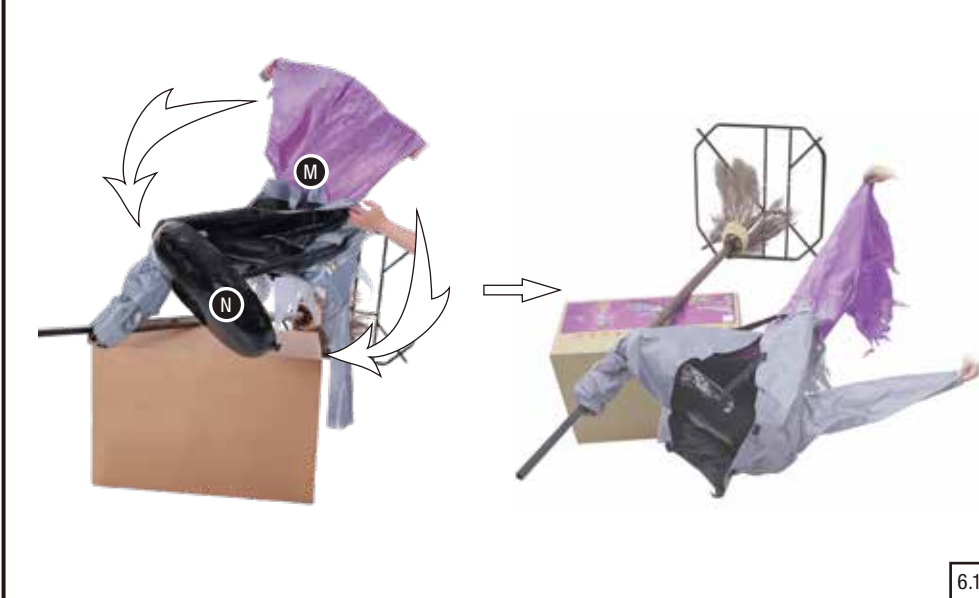
NOTE: Guide the (Z) Adapter Receiver cable through the (G, H) Broom Sticks before sliding them onto the (E) Support Pole.

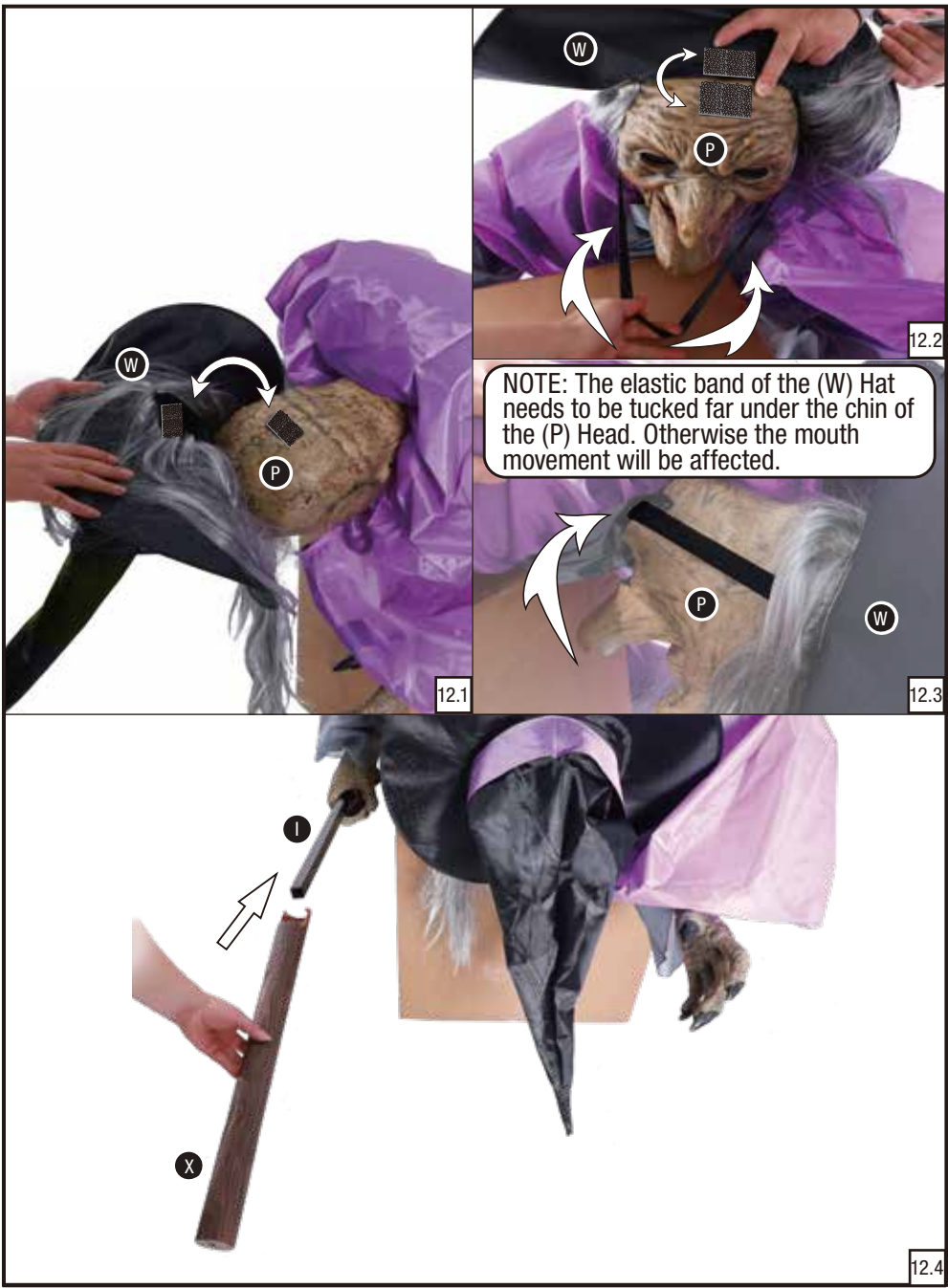


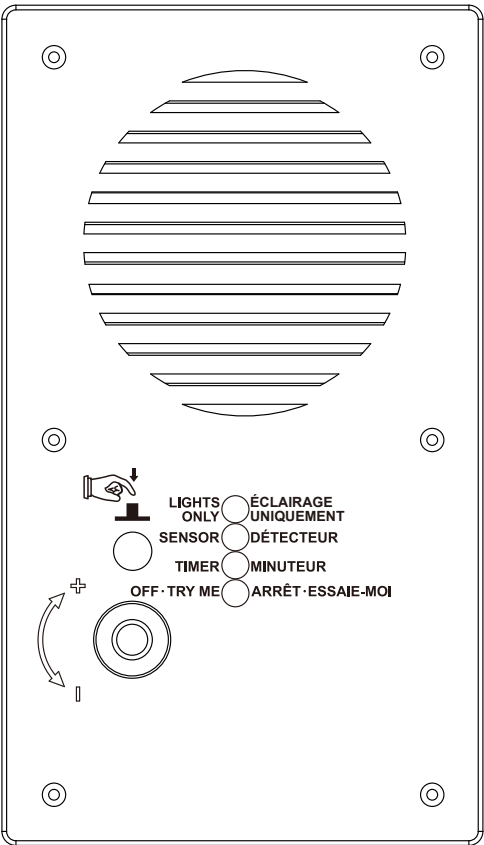
NOTE: Slide the right sleeve of the (M) Costume over the (K) Right Arm.



NOTE: Guide (M) Costume over the (N) Upper Torso Frame.







OPERATION INSTRUCTIONS:

The Hovering Witch is powered by an adapter. Plug in the power adapter into a standard power outlet. To turn on the Hovering Witch, press the button on the Function Control Box. Press the button again to switch to the Sensor setting. Press the button a third time time to switch to the Timer Setting. Press the button a fourth time to turn the item Off.

The item is activated by pressing the button on the Function Control Box and has the following settings:
NOTE: Witch speaks on SENSOR setting only.

LIGHTS ONLY /ÉCLAIRAGE UNIQUEMENT	This switch mode will activate the lights and the LCD eyes of the item. This switch mode does not have any animation.
SENSOR /DÉTECTEUR	This switch mode will activate lights, LCD eyes, sound, and animation when the Infra-red (IR) sensor is activated and will operate for 1 audio-cycle with each activation. The Infra-red (IR) sensor has a range of up to 2 m/6.5 ft. and will activate when someone comes within an 80-degree angle from left-to-right, as well as from above and below. The Witch speaks and moves only when the control box is set to "SENSOR" and the sensor is activated. Between activations, the Witch's hand and LCD eyes will light up.
TIMER /MINUTEUR	Timer begins daily cycles of LIGHTS ONLY for 6hrs, then ALL functions off for 18hrs. Witch does not speak or move on Timer setting.
OFF • TRY ME /ARRÊT • ESSAIE-MOI	This setting will deactivate the lights, LCD eyes, sound, and animation of the item. This mode also allows the item to be activated if triggered by using a Step Here Try Me Activation Pad (Not Included). The item will operate for one audio cycle with each Try Me activation.
	Raise or lower the volume using the volume control turn dial, turn all the way down to turn the volume off .

THE HOVERING WITCH IS COMPATIBLE WITH EXTERNAL TIMERS AND PRESERVES ITS SETTING WHEN THE POWER IS TURNED OFF/ON.

1

WE SUGGEST AT
LEAST TWO ADULTS
FOR ASSEMBLY

2

NO MOVING AFTER
FULLY ASSEMBLED

3

LEVEL AREA ONLY

4

DO NOT PUSH
OR TILT

5

DO NOT CLIMB
OR PULL ON

6

DO NOT ADD TO
OR MODIFY

7

USE WEIGHTS ON
THE BASE

8

CONTACT US
IF EYES,MOUTH,
LIGHTS DON'T WORK

9

DO NOT
DISPLAY DURING
STRONG WINDS

10

CAUTION
BROOM
BRISTLES
FLAMMABLE.
KEEP AWAY
FROM HEAT, SPARKS,
AND FLAMES.
KEEP OUT OF THE
REACH OF CHILDREN.

11

CONTACT US
1-855-434-6543

WARNING:

- Lay product down before a storm or strong winds.
- Don't climb or pull on product.
- Don't add to or modify product.
- Assemble and place the product on level surfaces only.
- Don't push or tilt product.

WARNING
This item is not a toy and should be used for decoration only. This item contains small parts that can be a choking hazard. Keep all plastic and wire parts away from children.
1. Please use the adapter supplied by manufacturer.
2. Please assemble item according to instructions. Connect all wires according to matching color.
3. Children should be supervised by adults. Item should not be grabbed, as it becomes a tipping hazard. Keep flammables away from the adapter, as it heats up during operation.
Please view all instructions carefully before assembling. Save this instruction sheet for future reference.

CARE AND STORAGE INSTRUCTIONS
When not in use, store this product in its original packing. Keep away from heat and moisture.

This device complies with Part 15 of the FCC Rules. Operation is subject to the following two conditions: (1) This device may not cause harmful interference, and (2) this device must accept any interference received, including interference that may cause undesired operation.
CAUTION: Changes or modifications not expressly approved by the party responsible for compliance could void the user's authority to operate the equipment.
NOTE: This equipment has been tested and found to comply with the limits for a Class B digital device, pursuant to Part 15 of the FCC Rules. These limits are designed to provide reasonable protection against harmful interference in a residential installation. This equipment generates, uses, and can radiate radio frequency energy and, if not installed and used in accordance with the instructions, may cause harmful interference to radio communications. However, there is no guarantee that interference will not occur in a particular installation. If this equipment does cause harmful interference to radio or television reception, which can be determined by turning the equipment off and on, the user is encouraged to try to correct the interference by one or more of the following measures: Reorient or relocate the receiving antenna, Increase the separation between the equipment and receiver. Connect the equipment into an outlet on a circuit different from that to which the receiver is connected. Consult the dealer or experienced radio/TV technician for help.
CAN ICES-003(B)/NMB-003(B)

© Seasonal Visions International
Berkeley, CA 94710
Tel: 1-855-428-3921
All Rights Reserved
MADE IN CHINA

© Seasonal Visions International
San Diego, CA 92101
Tel: 1-855-428-3921
All Rights Reserved
MADE IN CHINA

5/5