



## FINISHING INSTRUCTIONS

# OUTDECO USA Indoor/Outdoor Panels

FOLLOW THESE INSTRUCTIONS AND RECOMMENDATIONS FOR FINISHING PANELS.

## Finishing Options

### Initial Protection

Staining or painting is not required for OUTDECO USA panels to remain durable and long-lasting.

Untreated panels that age naturally will still be resistant to water damage and termites.

### Long-term Protection

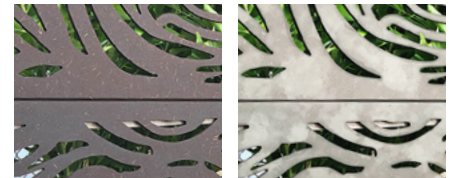
OUTDECO recommends treating panels with a solid-stain or sealer before installation for additional protection and to maintain original panel color.

### OPTION 1: Leave panels untreated to age naturally

OUTDECO™ USA panels are treated with Decoshield™ Semi-Transparent Stain, a factory-applied water-base timber sealant formulated to provide initial protection against UV and water damage.

As panels age and weather, the timber's natural tannins change the panel color to a silvery gray, similar to aged teak. Aged panels can be restored to a color similar to the original dark finish with solid-stain and sealer. (See page 2.)

See examples of treated and untreated panels in our Gallery at [outdecousa.com/design-gallery](http://outdecousa.com/design-gallery)



Original Panel Color

Aged Panel Color

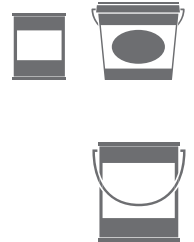


### OPTION 2: Treat panels with solid-stain, sealer, or paint for long-term protection

Since factory-applied Decoshield acts as a primer, panels are ready for applying paint, stain, or sealer directly. (See more on page 2.)

**Preserve your panels' rich, dark natural color:** Apply an exterior-grade, water-base, low-VOC solid-stain or fence sealer directly on panels. Re-apply at regular intervals, as you would for fences or decks.

**Enhance your decor:** Paint panels to suit your color palette. Use exterior-grade, water-base, low-VOC paint.



## Finishing Basics



### Treat panels before installing.

Always follow the product manufacturer's directions for number of coats, drying time, and other specifics. If in doubt, consult a hardware or painting professional.

### For better results and easier application, lay panels flat and treat before installing.

- OUTDECO panels are made of timber and have a machine-finished hardboard surface. The factory-applied Decoshield™ finish acts as a primer and is easily painted, stained or sealed with water-base products. Rates of absorption may vary.
- Use only exterior-grade, water-base, low-VOC solid stain or paint intended for timber. Any coating other than exterior-grade, water-base treatments or coatings not specifically intended for timber will void the warranty.
- If panels are treated on one side only, the difference in moisture absorption from front to back can cause minor warping. If applying a coating on the front, we recommend applying at least a light coat to the back.
- Follow the manufacturer's instructions regarding number of coats and drying time. Applying more coats than recommended will create a film that will likely peel.
- Patch test your coating product, paint color, or finishing technique on the back of a panel.
- Maintenance intervals for treated panels are similar to that of a hardwood timber fence.

# Coatings

OUTDECO is a timber product, so most exterior-grade, water-base, low-VOC coatings or finishes designed for timber are suitable.

Using coatings other than water-based treatments or products not specifically intended for timber will void the warranty.

## Stained Panel



## Painted Panels



Black painted panel with red LED backlighting

## STAIN

- Use an exterior-grade, water-base, low-VOC solid-stain with a pigment that will enrich the panels' natural color.
- Solid-stains help block UV rays to maintain the rich timber texture and reduce maintenance.



## SEALER

- Use an exterior-grade, water-base, low-VOC clear sealer.
- Re-treat panels as often as you would a hardwood timber fence.



## PAINT

- Use an exterior-grade, water-base, low-VOC paint.
- Follow paint manufacturer's directions for number of coats and drying time.
- Timber products' rates of absorption and finish may vary. Test a patch of your color or painting technique on the back or concealed panel edge.
- Repaint panels as often as you would other exterior painted wood surfaces.



## TO REFRESH A STAINED OR SEALED INSTALLATION

To maintain previously treated panels, re-coat with the previously used product or other exterior-grade, water-base seal or stain (timber fence product).

- Apply with a roller on the front surface and wipe excess drips in the pattern cut-outs and edge gaps.
- Re-treat panels as often as you would a hardwood timber fence.

## TO REVIVE THE COLOR OF A NATURALLY AGED (UNTREATED) INSTALLATION

If your panels have weathered slightly and you wish to bring back a darker, rich look, coat the surfaces with an exterior-grade, water-base solid stain and sealer.

- Use a solid-stain similar to the panels' original color and follow with a clear sealer.
- Apply with a roller on the front surface and wipe excess drips in the pattern cut-outs and edge gaps.
- Re-treat panels as often as you would a hardwood timber fence.

# Application Methods

Always follow product directions or consult a hardware or painting professional.

Wear protective clothing and eye protection.

**For better results and easier application, lay panels flat and treat before installing.**

## SPRAY-GUN

Spray panels with light coats, alternating at 45° angles and coat all edges evenly.



## ROLLER

Coat the roller in a roller-tray before applying. Roll the coating on the panels evenly for consistent coverage and to avoid build-up in the cavities. Clean up excess coating and drips with a paintbrush.



## PAINT BRUSH

Coat the brush well and apply evenly, wiping excess drips regularly.

