

# *Prolux*

*6000 / 7000 / 8000 / 9000  
Upright Vacuum*



**Instruction Manual**

## **Contents**

Safety Instructions -----	1-4
Included Parts -----	5-7
Operating Instructions -----	8-11
Assembly Instructions -----	12
Using the Tools -----	13-14
Maintenance -----	15-19
Warranty Information -----	20-21

### Congratulations on the purchase of your Prolux 6000 , 7000 , 8000 & 9000 Vacuum!

This manual covers the Prolux model 6000 , 7000 , 8000 & 9000. The Prolux 6000 , 7000, 8000 & 9000 models are high end vacuums that are attractive, powerful and designed to last for many years to come.

- High End Upright Vacuums - MSRP of \$599 & \$799
- 7 Year Warranty on 7000 & 9000 model and 5 Year Commercial Warranty on 6000 & 8000 model  
Sealed HEPA filtration– Model 6000 & 8000 (washable)  
Model 7000 & 9000 (TRUE HEPA)
- On board tools- [Duster, Upholstery, Crevice & Quick draw wand](#)
- [Bag Full Indicator on model 7000 & 9000](#)
- Noise Insulated for quiet easy vacuuming of all types of floor surfaces
- An amazing 107 cubic feet per minute of Air Flow
- Powerful 12 Amp Deep Cleaning Motor.

### Customer's Record

This model number and serial number of your vacuum cleaner is located on the underside of the unit. Please record these numbers in the spaces provided below and keep this booklet as a permanent record of your purchase.

Model Number: \_\_\_\_\_

Serial Number: \_\_\_\_\_

Date Purchased: \_\_\_\_\_

### IMPORTANT SAFETY INSTRUCTIONS

#### **Read all instructions before using this appliance**

When using your vacuum cleaner, basic precautions should always be followed,

including the following:

**WARNING-To reduce the risk of fire, electric shock, or injury:**

1. Before connecting the power cord of your new vacuum cleaner to an electrical outlet, check the voltage rating. Your power source should correspond with the voltage rating plate on the underside of the vacuum cleaner. Use only household **AC** outlets. Never use **DC** power sources. If you are unsure of the voltage supply in your area, consult a qualified electrician. Connecting the vacuum cleaner to a higher voltage than indicated in these instructions may result in damage to the vacuum cleaner and/or personal injury.
2. Do not leave the vacuum cleaner plugged in unattended. Unplug from the outlet when not in use or before servicing.
3. Always unplug before changing the **light bulbs**. Replace the bulbs with the same type rating.
4. **DO NOT USE OUTDOORS OR ON WET SURFACES.**
5. Do not allow the vacuum cleaner to be used as a toy. Pay close attention when using by or near children.
6. Use only as described in this manual. Use only manufacturer's recommended attachments.
7. Do not use the vacuum cleaner if the cord or plug is damaged.
8. If the vacuum cleaner is not working as it should, has been dropped, damaged, left outdoors or immersed in water, return it to an authorized vacuum cleaner dealer for repair.
9. Do not pull or carry by the cord, use the cord as a handle, run appliance over cord, close a door on the cord, or pull the cord around sharp edges or corners. Keep the cord away from heater surfaces.
10. Do not unplug by pulling on the cord. To unplug, grasp the plug, not the cord, and pull out of the outlet.
11. Do not handle the plug or the vacuum cleaner with wet hands.
12. Do not put objects into the openings. Do not use with any openings blocked. Keep free of dust, lint, hair, and anything that may reduce air flow.
13. Do not allow loose clothing, hair, fingers or other parts of the body to come

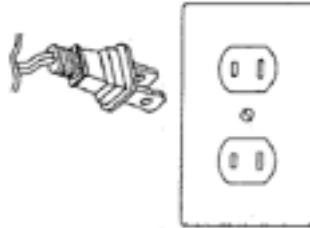
- I into contact with any openings or moving parts of the vacuum cleaner.
14. Do not vacuum anything that is burning or smoking, such as cigarettes, matches, or hot ashes.
  15. Do not use without the dust bag and/or filters in place.
  16. Always turn off all controls before unplugging the vacuum cleaner or before connecting or disconnecting either the hose or the agitating brush.
  17. Use extra care when cleaning on stairs.
  18. Do not use the vacuum cleaner to pick up flammable or combustible liquids, such as gasoline, or use in areas where they may be present. This could impair the electrical safety of the vacuum cleaner. This applies to freshly shampooed carpets, too. Wait until they are dry.
  19. Floor attachments and accessories must not be used at head level to avoid the risk of injury to eyes and ears.
  20. Do not touch the agitating brush when in use.
  21. Prolux vacuum cleaner dust bags are disposable and are intended to be used only once. Do not attempt to reuse them.
  22. DO NOT USE ON PEOPLE OR ANIMALS.
  23. This appliance is for use on a nominal 120-volt circuit and has a grounding attachment plug that looks like the plug illustrated in sketch A in Figure 20. Make sure that the appliance is connected to an outlet having the same configuration as the plug. No adapter should be used with this appliance.

## **WARNING**

Household Models 6000 , 7000 & 9000

NOTE: As a safety feature and to reduce risk of damage, injury or electric shock, this vacuum cleaner is equipped with a polarized alternating current line plug (one blade wider than the other). This plug will fit in a polarized outlet only one way. If the plug does not fit fully in the outlet, reverse the plug. If the plug still fails to fit, contact a qualified electrician to replace the outlet. Do not attempt to alter the plug thus defeating the safety purpose of the polarized plug.

SAVE THESE INSTRUCTIONS.



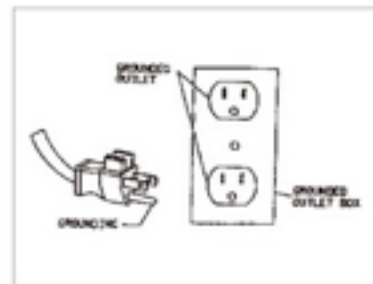
Models 6000 & 7000 & 9000 are intended for household and light office use only.

### COMMERCIAL MODEL 8000

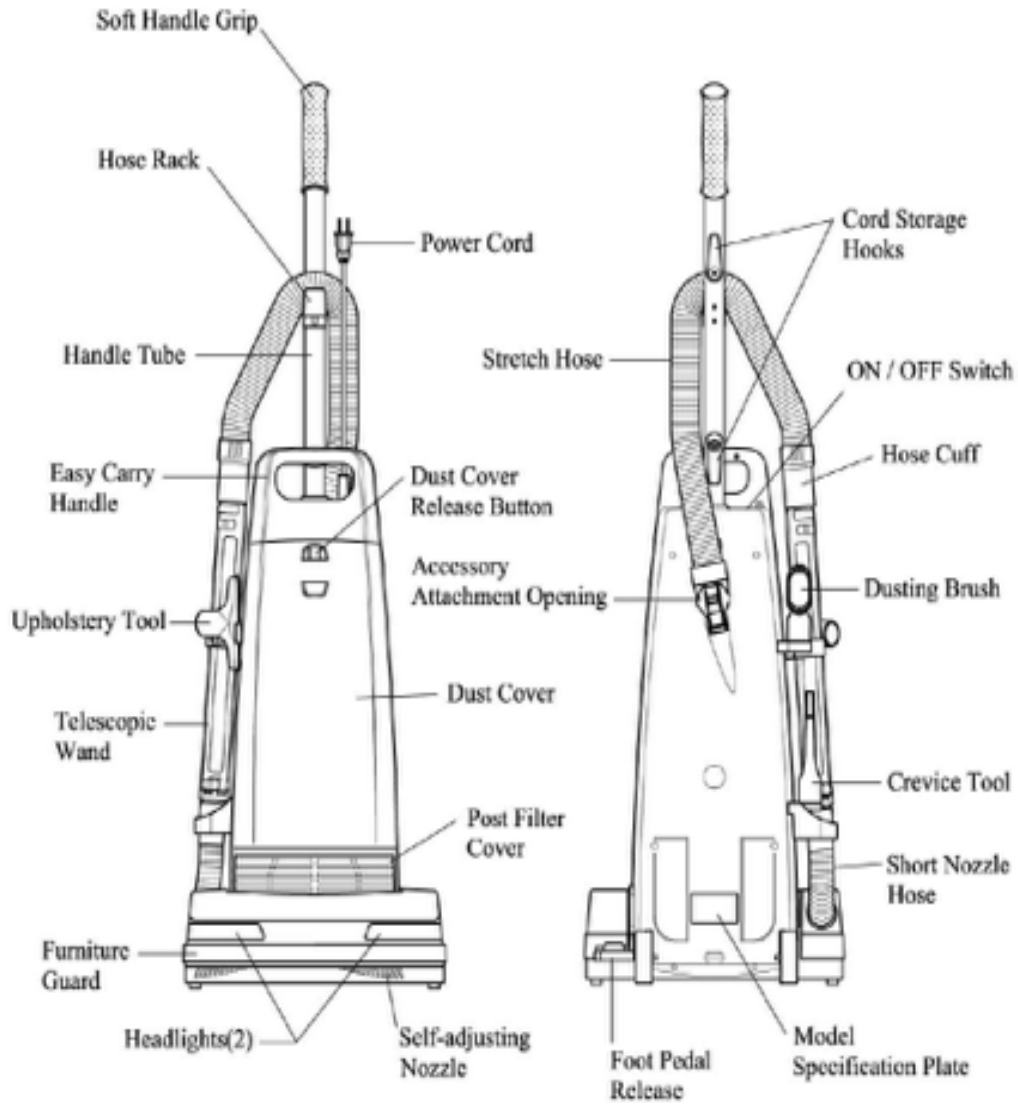
This appliance must be grounded. If it should malfunction or break down, grounding provides a path of least resistance for electric current to reduce the risk of electric shock. This appliance is equipped with a cord having an equipment-grounding conductor and grounding plug. The plug must be plugged into an appropriate outlet that is properly installed and grounded in accordance with all local codes and ordinances.

This appliance is for use on a nominal 120-volt circuit and has a ground plug that looks like the plug illustrated. Make sure that the appliance is connected to an outlet having the same configuration as the plug. No adaptor should be used with this appliance.

**WARNING** -Improper connection of the equipment-grounding conductor can result in a risk of electric shock. Check with a qualified electrician or service person if you are in doubt as to whether the outlet is properly grounded. Do not modify the plug provided with the appliance - if it can not fit the outlet, have a proper outlet installed by a qualified electrician.



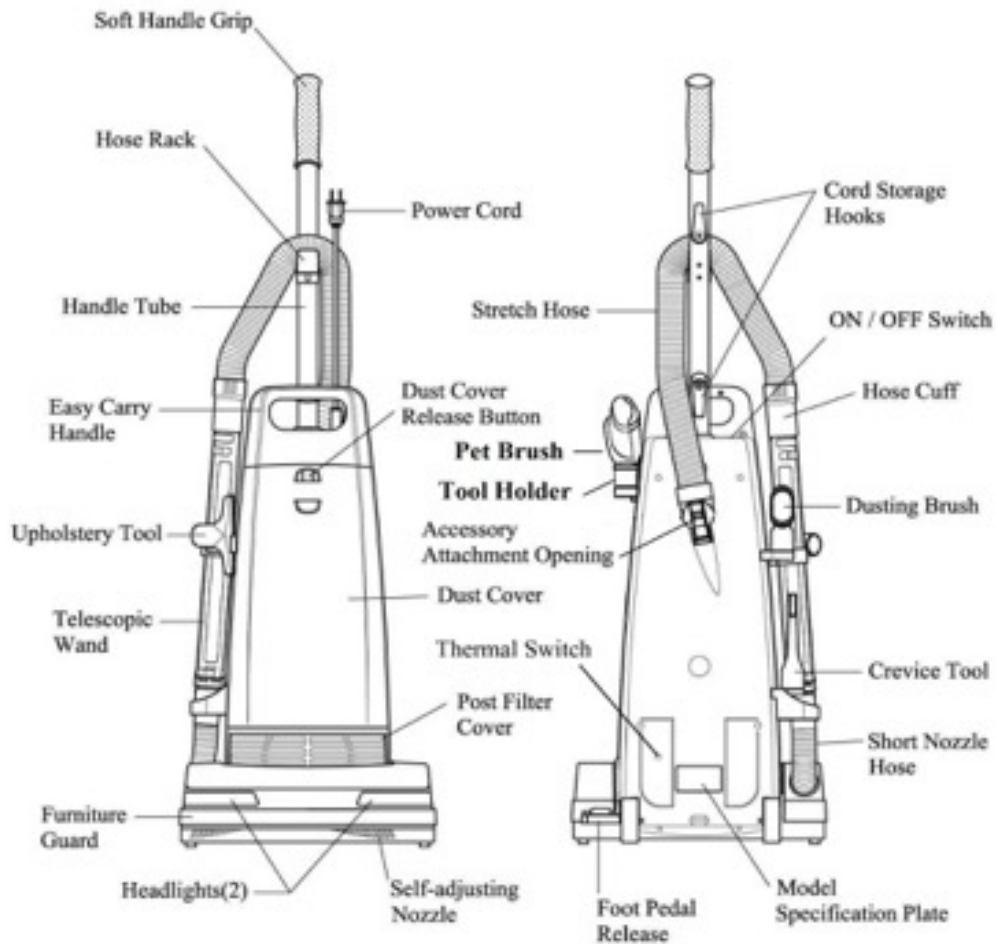
***PARTS IDENTIFICATION : Model 6000***



**FEATURE COMPARISON CHART**

Feature / Model	Input (amps)	Power Control	Full Bag Indicator	Head Light	Cord Length
6000	12.0	1-Speed	No	Yes	25 feet

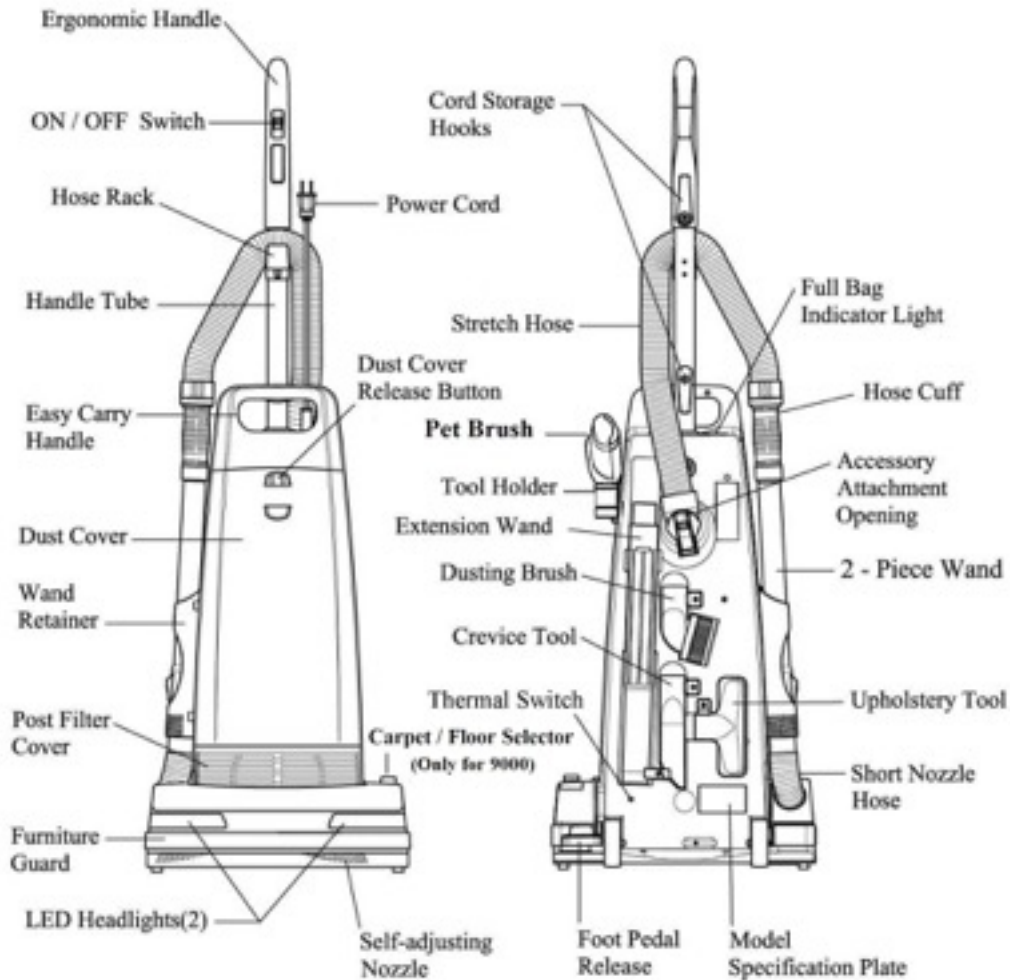
### ***PARTS IDENTIFICATION : Model 8000***



### **FEATURE COMPARISON CHART**

<b>Feature /Model</b>	<b>Input (amps)</b>	<b>Power Control</b>	<b>Full Bag Indicator</b>	<b>Head Light</b>	<b>Cord Length</b>	<b>Fuse</b>
<b>8000</b>	<b>12.0</b>	<b>1-Speed</b>	<b>No</b>	<b>Yes</b>	<b>40 feet</b>	<b>Yes</b>

## ***PARTS IDENTIFICATION : Model 7000 & 9000***



**FEATURE COMPARISON CHART**

Feature /Model	Input (amps)	Power Control	Full Bag Indicator	Head Light (LED)	Cord Length	Fuse
7000 & 9000	12.0	1-Speed	Yes	Yes	30 feet	Yes

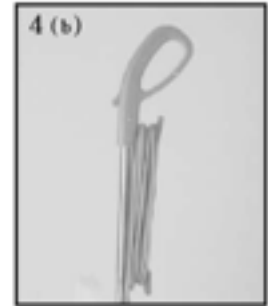
## **EASY ASSEMBLY INSTRUCTION**

### **Step One: Attaching the Handle**

1. Remove handle screw.
2. Insert handle into top of dust cover with handle switch facing forward (Model 7000 & 9000 only). **Make sure handle is firmly pushed down all the way.**



3. Align small hole on handle with screw hole in dust cover. Insert screw and tighten securely (All models).
4. Turn upper cord storage hook to upright position and wind cord between upper and lower hooks for storage.
5. To quick-release cord, simply rotate upper hook downward and cord will drop for immediate use.



### How To Release Power Cord:

1. The upper cord storage hook has a quick-release action. To release the cord, rotate the hook downward and the cord will drop off the handle for immediate use.
2. Return the hook to upright position before attempting to rewind the cord.

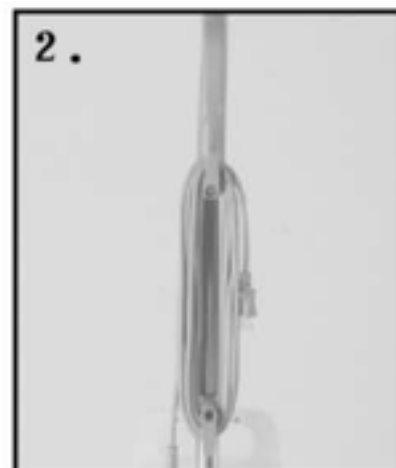
### Replacing the Dust Bag:

*\*Remember:* Always have a dust bag installed when operating your vacuum cleaner. Replace with a genuine dust bag when full.

1. Push down on knob at top of dust cover to open compartment.
2. Pull cardboard bag collar off holder. Remove and discard used dust bag.
3. Slide clean replacement bag collar onto holder. The bag lever must be positioned behind bag collar. Never pull up the lever, rather, push it down with dust bag.
4. Close dust cover by reinserting tab on end into groove on housing and snap shut.

### Checking the Secondary Filter:

*\*Important:* The secondary filter protects the



motor from dust and dirt. **Operating the vacuum without the secondary filter in place voids the warranty.**

1. Check for accumulated dust and dirt when replacing dust bag.  
Filter may be cleaned as needed.
2. If replacement is needed, release the right tab on underside of bag supporter. Lift and rotate bag supporter to remove.
3. Remove secondary filter from bottom of dust compartment.
4. Replace secondary filter with new filter.
5. Reinstall bag supporter.



#### Checking the Post Filter:

The auxiliary post filter captures fine dust particles and purifies air exiting your vacuum cleaner.

Change or clean the post filter with every third dust bag replacement, or as needed.

1. Depress handle release pedal to drop vacuum cleaner to low position.
2. Push knob at side of post filter to remove post filter cover.
3. Remove soiled filter and replace with new one. (Do not wash.)

## Special Features Make Your Vacuum a Peak Performer!

### ON/OFF Switch:

Model 6000 & 8000 Vacuum Cleaners have a simple toggle switch on the dust compartment. Push down --- to start. Push down ○ to stop.

Model 7000 & 9000 are equipped with a convenient handle slide switch to turn power ON and OFF.



### Automatic Self-Adjusting Carpet Nozzle:

Your vacuum can float evenly over varying carpet pile lengths. The carpet nozzle raises itself instantly and automatically.

Full Bag Indicator Light:  
Model A warning



7000 & 9000  
light located on the front

of the switch cover below the easy carry handle will activate when the dust bag is full, or if the vacuum cleaner is clogged. Replace bag if full.

To check for clogs, unplug vacuum cleaner and inspect agitator area (see “Removing the bottom plate” on page 17) hose and attachment inlet.

Special note: when cleaning with attachments, disregard the full bag indicator light. Normal airflow restrictions occur with attachment cleaning and may trigger a false signal.

When turning on the vacuum cleaner while the full bag indicator light is on and the vacuum cleaner will not start, check to see if the dust bag is installed correctly.

### Handle Adjustments:

The handle of this vacuum cleaner can be set to any of three positions: upright, middle, or low. To release the handle, step on the pedal at the left rear corner of the vacuum cleaner.

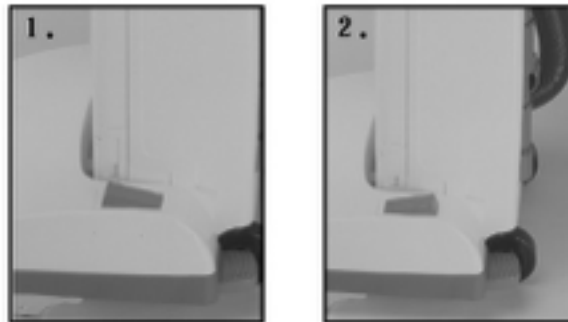
1. Upright position: handle locks in this position for vacuum cleaner storage. The handle should always be in the upright position when cleaning tools are used.
2. Middle position: this position is for normal cleaning. While in the middle position, the front of the nozzle can be raised by lowering the handle in order to cross room thresholds.
3. Low position: this position is used for cleaning under most furniture.



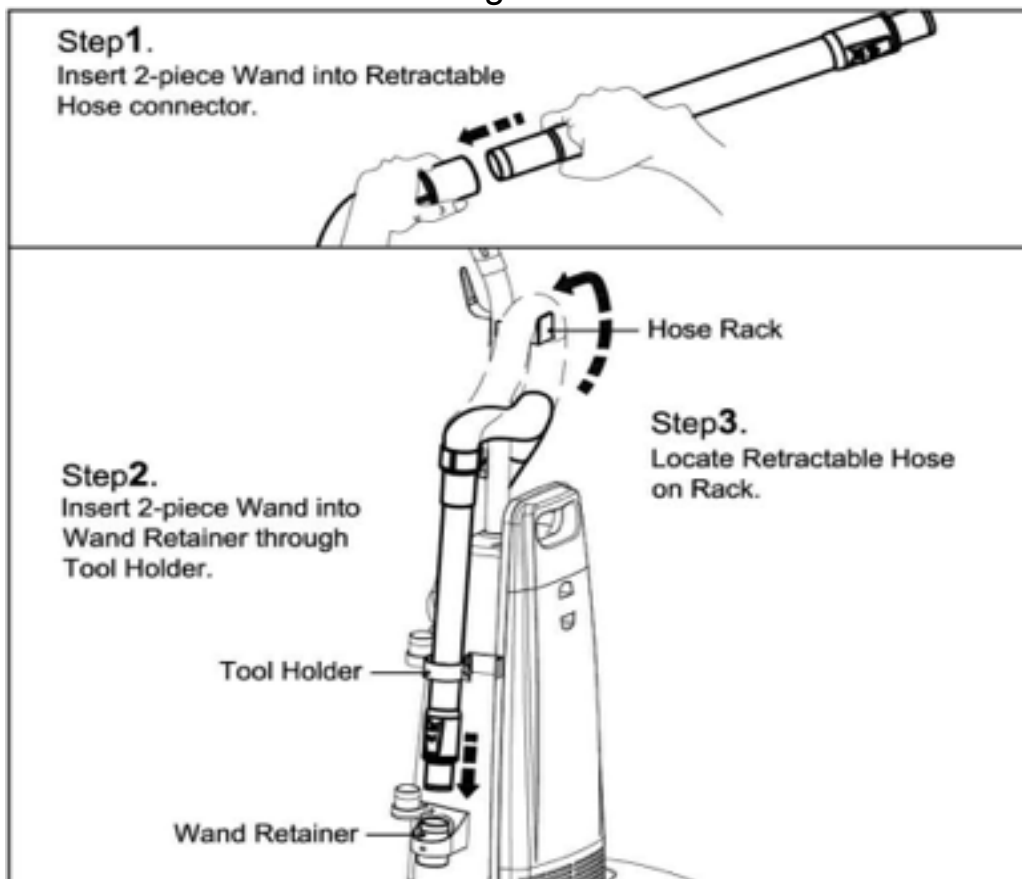
## **CARPET/FLOOR Selector : Model 9000**

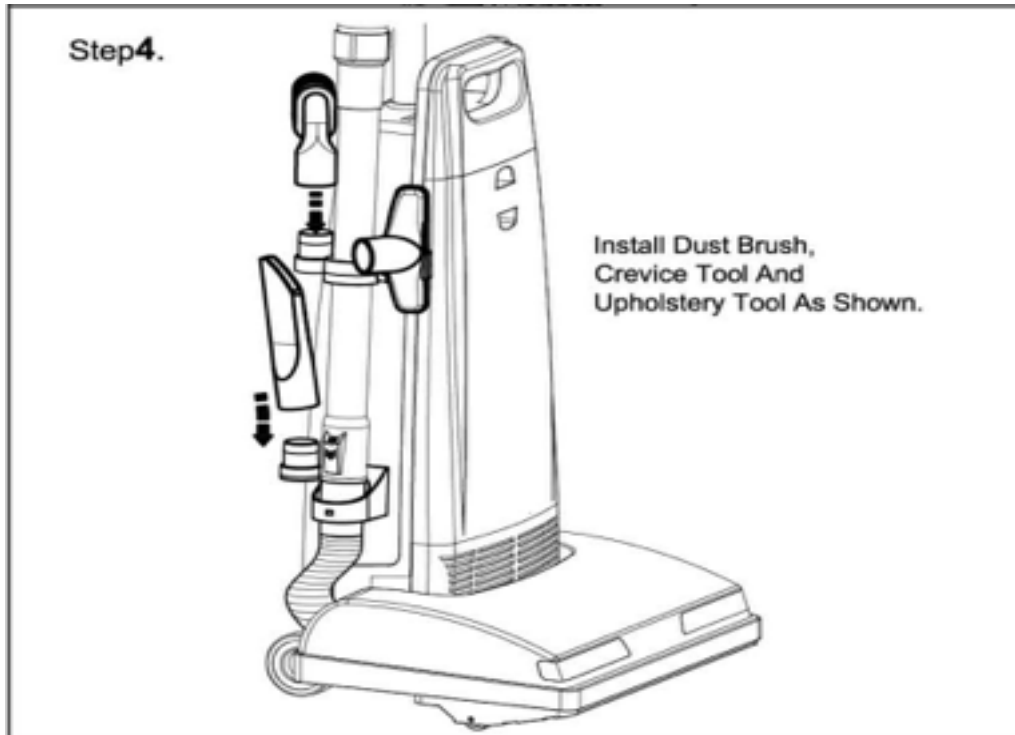
The CARPET/FLOOR selector provides you with the convenience of cleaning carpeted floors and bare floors.

1. When cleaning carpeted floors, push the switch located on the nozzle housing down to the CARPET position.
2. When cleaning bare floors, the vacuum cleaner handle needs to be in the upright position, then push the switch located on the nozzle housing down to the FLOOR position.



## How To Use Friction Fit Cleaning Tools: Model 6000 & 8000





The tools are

connected by friction fit. Meaning to attach simply shove together and twist firmly. To remove simply untwist.

On-board Cleaning Tools:

Model 7000 & 9000 are equipped with state-of-the-art on-board cleaning tools including:

- 2 piece telescoping wand
- Extension wand
- Crevice tool
- Dusting brush
- Upholstery tool

To use:

1. Remove 2 piece telescoping wand from wand retainer.
2. Connect 2 piece telescoping wand to cleaning tools. Unlock wand collar to extend wand to desired length.
3. Attach selected cleaning tool to wand. (Tools may also be attached directly to flexible hose cuff, omitting extension wand.)
4. Cleaning tools are stored conveniently on back of the vacuum cleaner body. Snap tools back into their appropriate places.

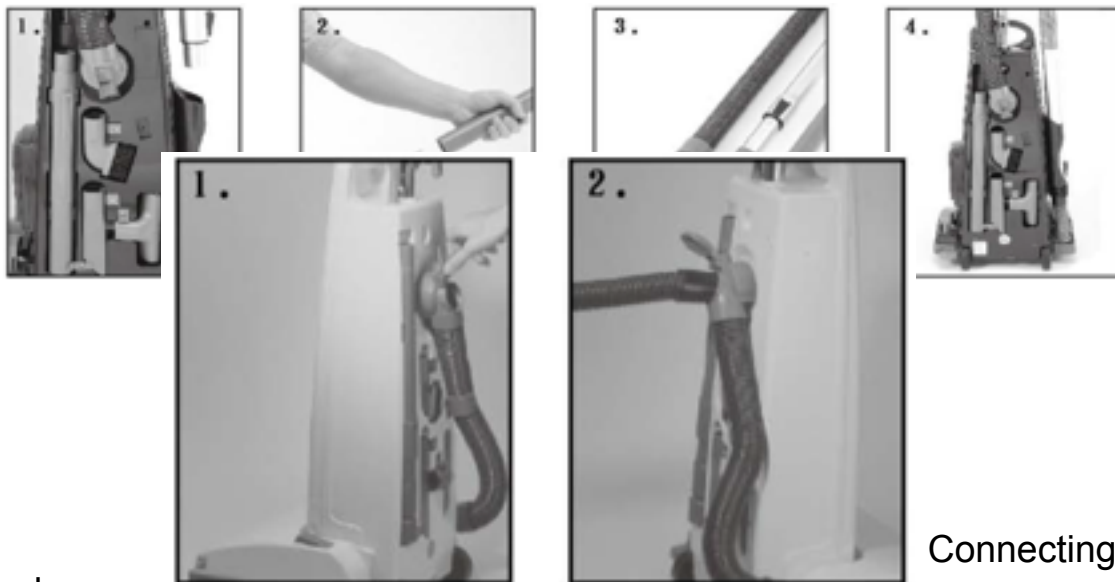
## Available Optional Cleaning Tools:

A deluxe attachment set is available for models without on-board tools. It contains:

1. Hose assembly
2. Curved wand
3. 3 piece telescoping wand
4. Dusting brush
5. Crevice tool
6. Upholstery brush

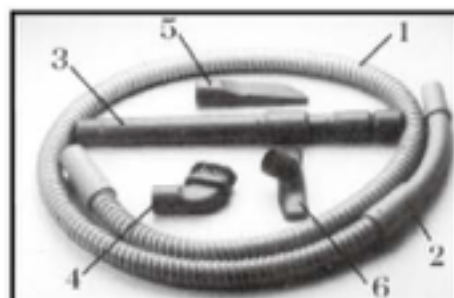
## Connecting the Optional Hose Assembly:

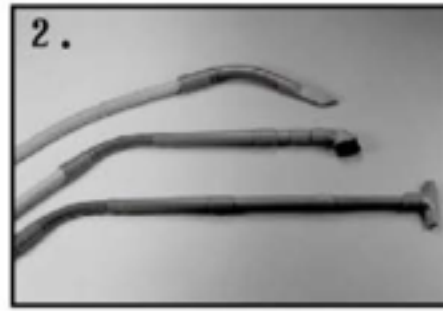
Simply lift the lid of the cleaning attachment opening located at the back of your vacuum cleaner and insert the hose end until it fits snugly.



## Tools:

Connect any of the cleaning tools to the extension wand or curved wand and twist for secure fit. Twist and pull apart to remove.





### Suction Control: Model 6000 , 7000 , 8000 & 9000

To reduce suction when cleaning draperies, small rugs, etc., move the suction control slide on the back of the vacuum cleaner by increasing the opening until desired suction power is achieved. Close for normal vacuum operation.

**Note:** Model 7000 full-bag indicator light will not operate while suction control is in open position.

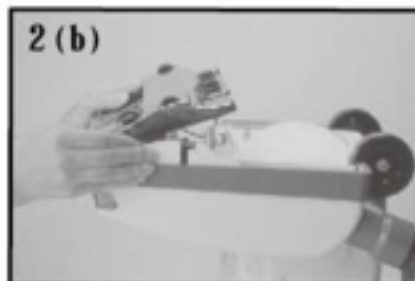


### Replacing Headlight Bulb:

Step One: Removing the bottom plate

*\*Caution:* First unplug the vacuum cleaner from the electrical outlet.

1. Use handle release pedal to place vacuum in Low position. Turn vacuum over to expose underside.
2. Slide the two latches inward to release bottom plate.



Step Two: Changing the Headlight Bulb

Model 6000 & 8000 (Models 7000 and 9000 use LED lights which don't need changed).

1. Use any standard bayonet base appliance bulb rated 120-130 V, 15 W.
2. Remove the two frame screws.
3. Carefully lift out the entire headlight assembly.

4. Remove bulb by pushing in lightly and turning counterclockwise.
5. Replace with new bulb, turn clockwise.
6. Reinsert the headlight assembly back into the nozzle housing being careful not to pinch or re-arrange any wires and insert the two frame screws.
7. Reinsert bottom plate making certain that the hinges are in place on the front of the housing before sliding the two latches outward to fasten.

### Resetting the Thermal Switch:



Model 6000, 7000 , 8000 & 9000

The Thermal Switch protects the motor from overheating. If the motor stops due to prolonged use, follow steps 1-5.

1. Unplug the power cord.
2. Set power switch on handle to OFF position.
3. Wait about 10 min. to let the motor cool down.
4. Push the reset button lightly to the stop position.
5. Restart your vacuum cleaner.



### Replacing the fuse:

Model 6000, 7000, 8000 & 9000

The fuse protects the motor from overload. If the motor stops due to prolonged use, check fuse follow steps 1-5

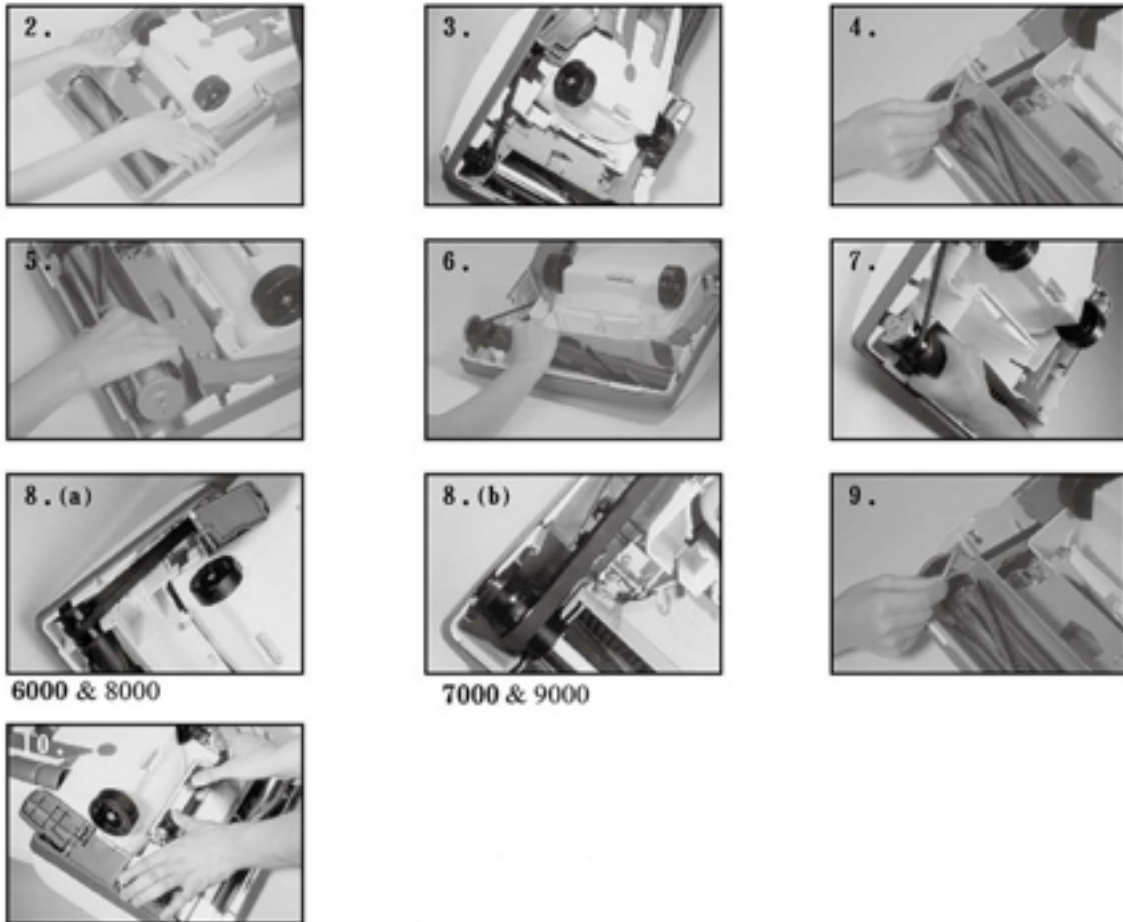
1. Unplug the power cord.
2. Open the motor cover.
3. Push and turn the fuse holder counterclockwise to open it. and remove the fuse.
4. Install the new fuse, push and turn the fuse holder clockwise to close it.
5. Reinstall the motor cover.





### Replacing the Drive Belt:

1. Unplug the power cord.
2. Turn the unit over and remove the bottom plate as previously described under "Replacing Headlight Bulb Step One" on previous page.
3. Lift the rear belt cover up and back.
4. Remove the vented support fitting, noting position.
5. Remove agitator unit and worn out belt.
6. Loop new belt around motor drive shaft and agitator pulley.
7. Reinsert agitator unit into housing, making sure the two ends are positioned in the support guide.
8. Turn agitator unit by hand to install new belt onto guide, making sure belt is not twisted and rotating parts move smoothly.
9. Reinsert the vented support fitting and lower rear belt cover.
10. Reinsert bottom plate making certain that the hinges are in place on the front of the housing before sliding the two latches outward to fasten.

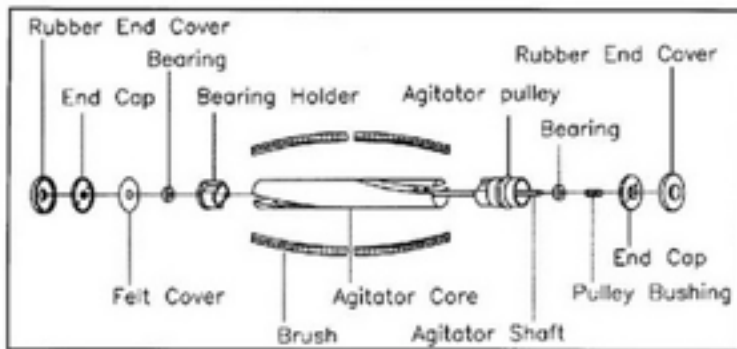


### Changing the Agitator Brushes:

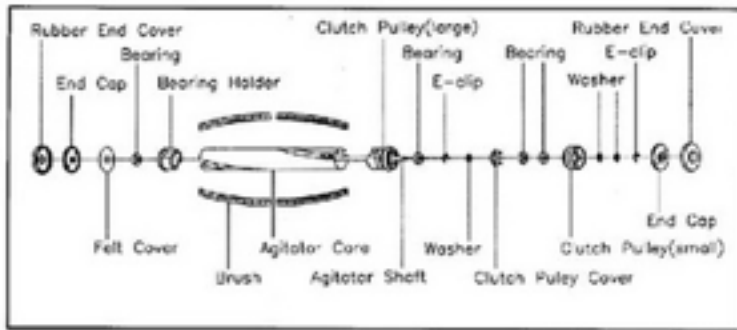
Replace agitator brushes when they are worn or when the bristles do not touch a card held across the base plate. Replace all four brushes at the same time to maintain maximum cleaning performance.

Remove agitator, start as described on previous page, Section 1 to 4.

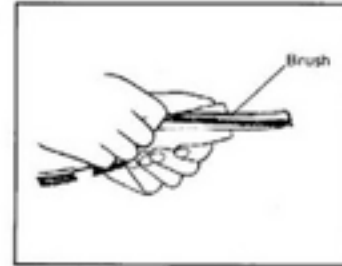
1. Turn on end cap and remove.
2. Remove the agitator shaft.
3. Remove and replace the brushes on the shaft.
4. Reinstall the pulley and agitator holder making sure they are inserted completely and firmly.
5. Reinstall remaining parts.
6. Reinstall agitator assembly as described previously in Step 6-10 on previous page.



(6000 & 8000)



(7000 & 9000)



### For Best Performance:

1. Keep machine and all accessories clean and in proper operating condition.
2. Change dust bags and filters as recommended to maintain optimum cleaning efficiency.
3. Always use genuine dust bags and filters. Use of other products may result in unsatisfactory cleaning or filtration performance. Filtration products are designed for maximum performance.
4. Use only vacuum cleaner authorized dealers for repairs parts or service.
5. Carefully store machine in a dry area.
6. For optimum cleaning performance and safety, follow your Owner's Manual. Keep this manual in a safe place for future reference.

### Cleaning the Nozzle:

The nozzle hose carries the dirt from the nozzle to the dust bag and also functions as the attachment cleaning hose.

### If it should become clogged:

Model 6000 , 7000 , 8000 & 9000

1. Unplug the power cord.
2. Open the lid of the cleaning attachment opening and remove clog or blockage.
3. If the hose is still blocked, remove hose cuff from nozzle inlet.
4. Turn the unit over, and [remove bottom plate](#).
5. Check nozzle inlet tube for obstructions.

6. When clear, reinstall bottom plate. See instruction on previous page, "Replacing the Drive Belt."



**Any other servicing should be performed by an authorized Prolux Vacuum Cleaner Dealer.**

### **ProLux Limited Warranty**

#### **What this limited warranty covers:**

Warranty period for Prolux vacuum models:

Prolux 6000 –

Residential Use - the entire vacuum shall be covered for a period of two years and five years for the motor.

Commercial Use – the entire vacuum & motor shall be covered for a period of 90 days.

Prolux 7000 & 9000

Residential Use - the entire vacuum shall be covered for a period of three years and seven years for the motor.

Commercial Use - the entire vacuum and motor shall be covered for a period of 1 year.

Prolux 8000-

Residential Use - the entire vacuum shall be covered for a period of **three** years and five years for the motor.

Commercial Use – **the entire vacuum shall be covered for a period of 1 Year and 3 years on the motor.**

Warranty coverage shall start from your date of purchase, will be free from all defects

in material and workmanship for normal use in accordance with the Owner's Manual. This limited warranty is granted only to the original purchaser. This limited warranty is subject to the following provisions:

**What this limited warrant does not cover:**

- Expenses related to pick up, delivery or house calls.
- Parts of the cleaner that require replacement under normal use, such as disposable dust bags, filters, drive belts, light bulbs, and brushroll bristles.
- Damages or malfunctions caused by accident, acts of God, negligence, abuse, or use not in accordance with the Owner's annual.
- Defects or damages caused by improper service or maintenance, the use of parts other than genuine Prolux parts or modifications made to the cleaner without our prior written approval.
- Damage that occurs during shipment.
- Vacuums used outside the United States or Canada without approved voltage convertors.

**What ProLux will do:**

ProLux will, at its option, repair or replace a defective vacuum or vacuum cleaner part that is covered by this limited warranty. As a matter of warranty policy, ProLux will not refund the consumer's purchase price. Prolux shall be responsible to pay for all parts and labor for authorized warranty service.

**Obtaining warranty service:**

To obtain warranty service you must contact the Prolux Authorized Dealer you bought the vacuum from. Most Authorized Dealers are also Authorized Warranty Centers which is why **you should contact your dealer first**. After you have contacted your authorized dealer and still have questions about warranty work you can contact ProLux at [service@proluxcleaners.com](mailto:service@proluxcleaners.com)

**Further Limitations and Exclusions:**

THE WARRANTY PROVIDED ABOVE IS EXCLUSIVE AND IN LIEU OF ALL OTHER EXPRESS OR IMPLIED WARRANTIES INCLUDING, BUT NOT LIMITED TO THE IMPLIED WARRANTIES OF PROLUX FOR A PARTICULAR PURPOSE. SOME LAWS DO NOT ALLOW THE EXCLUSION OF IMPLIED WARRANTIES. IF THESE LAWS APPLY, THEN ALL EXPRESS AND IMPLIED WARRANTIES ARE LIMITED TO THE WARRANTY PERIOD IDENTIFIED ABOVE. UNLESS STATED HEREIN, ANY STATEMENTS OR REPRESENTATIONS MADE BY OTHER PERSON OR FIRM ARE VOID. EXCEPT AS PROVIDED IN THIS WRITTEN WARRANTY, NEITHER PROLUX VACUUM, NOR ITS AFFILIATES SHALL BE LIABLE FOR ANY LOSS, INCONVENIENCE OR DAMAGE INCLUDING DIRECT, SPECIAL, INCIDENTAL, OR CONSEQUENTIAL DAMAGES RESULTING FROM THE USE OR INABILITY TO USE THE VACUUM PRODUCT, WHETHER RESULTING FROM BREACH OF WARRANTY OR ANY OTHER LEGAL THEORY. IN NO EVENT WILL PROLUX VACUUM EXCEED THE PURCHASE PRICE OF THE VACUUM CLEANER, LESS DEPRECIATION.

