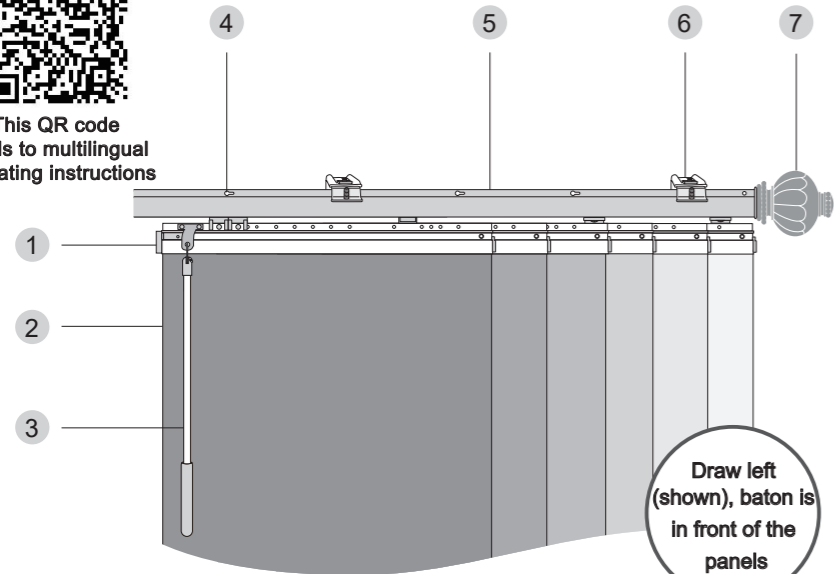


Panel Track Installation Instructions

International patent owned by US ABO Window Fashion.
Licensed to Taiwan SYN YAO Enterprise Co. Ltd.



This QR code leads to multilingual operating instructions



Example of Six Panel Track Installation

- 1 Sliders 2 Panel Curtains 3 Baton 4 Keyhole 5 Rod 6 Bracket 7 Finials (Sold Separately)

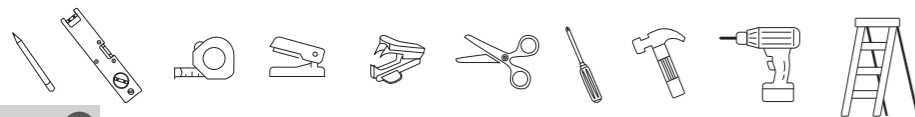
For installation drawing from left to right, / For installation drawing from right to left, baton sits in front of the panel.

*Refer to the chart for slider count and overall length of the installation.

Recommended Slider Count for Coverage Needed			
Slider Count	Slider Length 16"	Slider Length 23"	Inner and Outer Track Join Pattern
3 Count	16~43"	23~67"	Inner Track Outer Track
4 Count	16~57"	23~89"	Inner Outer
5 Count	16~71"	23~110"	Inner Outer
6 Count	16~85"	23~132"	Outer Inner Outer
8 Count Double Track	-----	23~175"	Inner Outer Inner Outer
10 Count Double Track	-----	23~218"	Inner Outer Inner Outer
12 Count Double Track	-----	23~262"	Inner Outer Inner Outer Inner Outer

- For ceiling installations, finials cannot be used.
- Your installation needs may differ from the example shown.

Tools



Note 1 Dry Wall Anchors

For Studs

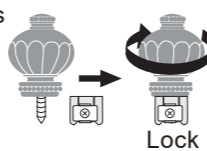
Drill a 1/8" pilot hole and mount the brackets onto the wall with the screws.

For Dry Wall

Drill a 3/16" pilot hole, hammer in the dry wall anchor, and mount the brackets on to the wall with screws.

Note 2 Finials (Sold Separately)

Remove the end caps and screw the finials onto the cap. (The end caps are labeled 'IN' and 'OUT'. Make sure to insert the end caps back to the correct ends.)



Note 3 Double Track Clip

The clips has 2 side: one side is for clipping inner tracks together, the other for outer tracks. Place the clip 1/2" from the end of the tracks.



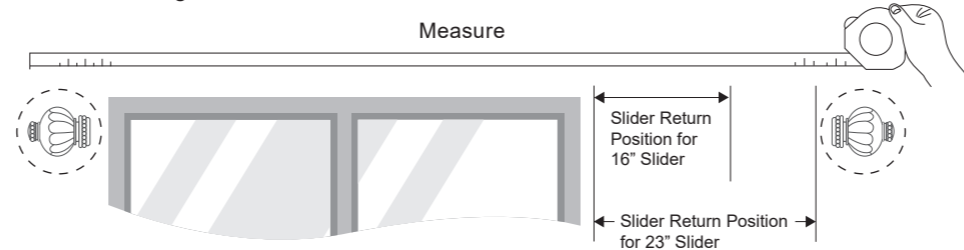
Note 4 Bracket Mounting Position

Required brackets placement for proper loading, spread the rest of the brackets out evenly

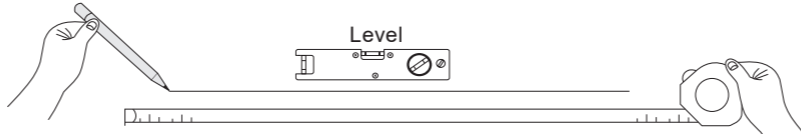
Count	16" Slider	23" Slider
3	First, 4th and last keyhole	First, 5th and last keyhole
4	First, 4th and last keyhole	First, 5th and last keyhole
5	First, 4th and last keyhole	First, 5th and last keyhole
6	First, 4th and last keyhole	First, 5th and last keyhole
8 (Double Track)	First, 4th and last keyhole	First, 5th and last keyhole
10 (Double Track)	First, 4th and last keyhole	First, 5th and last keyhole
12 (Double Track)	First, 4th and last keyhole	First, 5th and last keyhole

Step 1.a Wall Installation (for ceiling installation, see step 1.b)

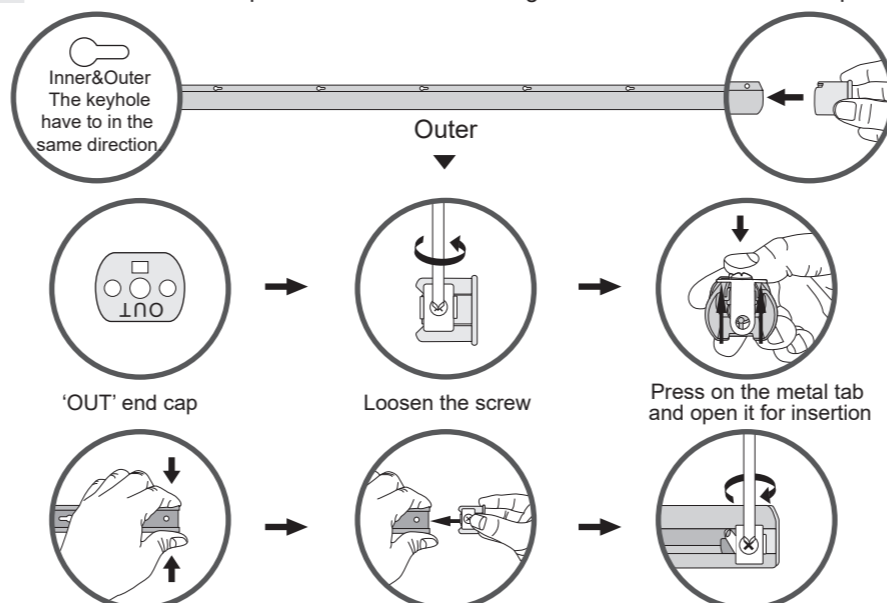
a-1 Measure the length of the coverage needed. Don't forget to include the finials if installing.



a-2 Draw a line where the brackets will be installed.



a-3 Insert 'OUT' end cap into an outer rod and tighten the screw to lock it in place.

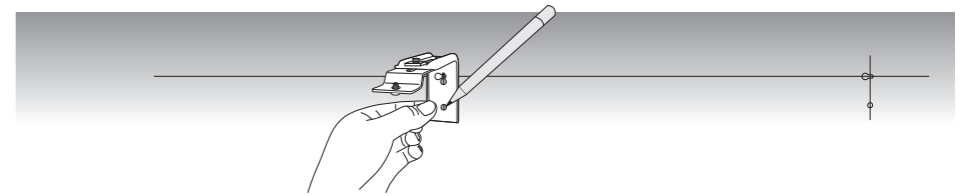


a-4 Install the outer track segment with the end cap. (See Note 4 for recommended bracket positions.)

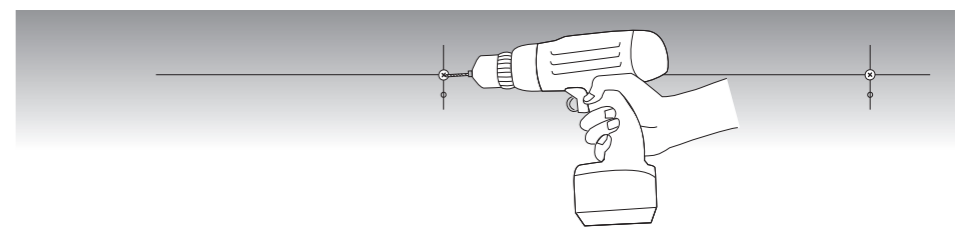
a-5 Mark the position of the mount by placing the track on the line.



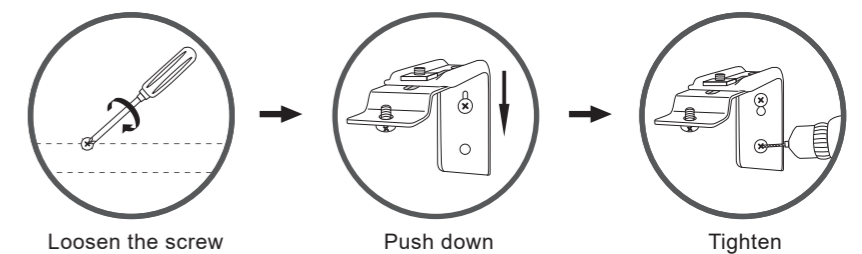
a-6 Use a bracket to mark the placement of the bracket on the line.



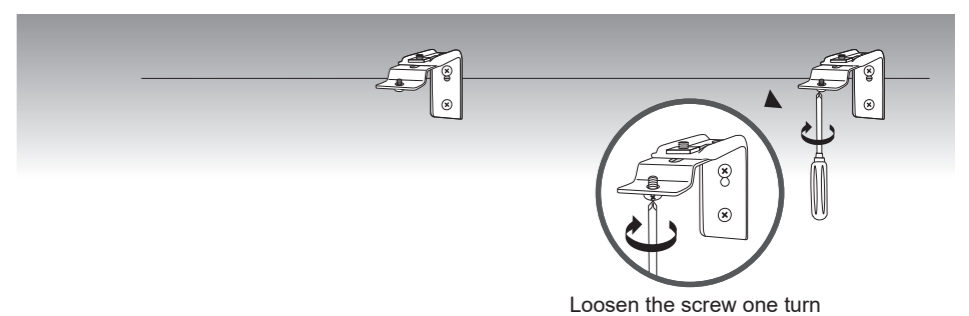
a-7 Drill pilot holes for the screws.



a-8 Loosen the screws and mount the brackets through their keyhole slots. Screw in the bottom screw to secure the brackets.



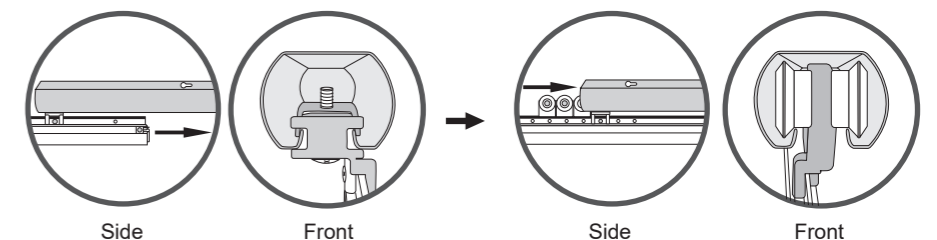
a-9 Loosen the furthest screw on the extended part of the bracket.



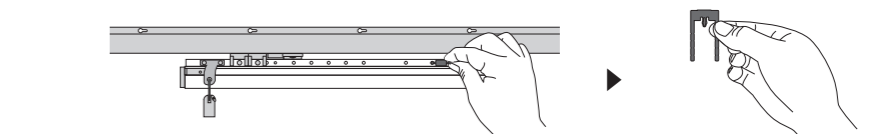
a-10 Mount the track onto the bracket through the keyhole, shift the track into place, and tighten the screw to lock the track in place.



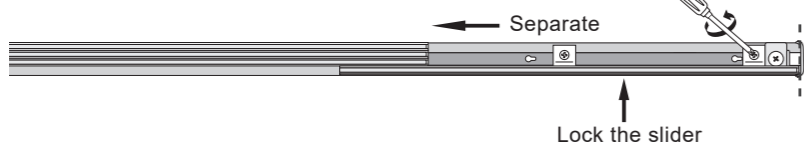
a-11 After mounting the outer track, insert the sliders.



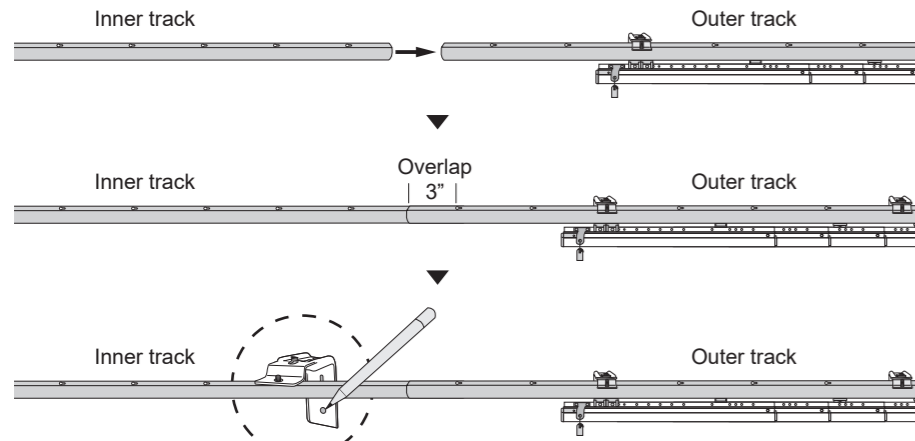
a-12 Remove the red pin that holds the slider together (can be reused to assist with the rest of the installation.)



a-13 Separate the sliders, align the last slider with the end of the curtain rod, and lock the last slider by tightening the both screws on the slider.

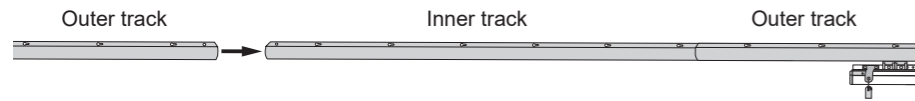


a-14 After mounting the first segment, insert an inner track. Make sure there is at least 3" overlap. Mark the placement of the next bracket and make sure rest of brackets are evenly spread out.

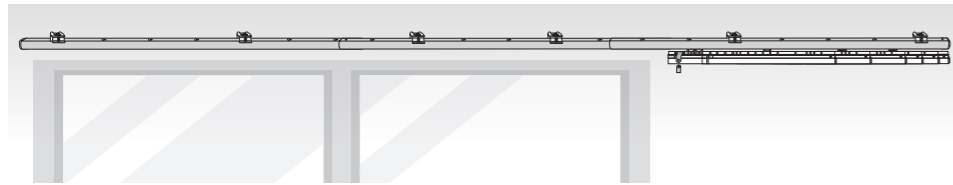


a-15 See a-7,a-8,a-9,a-10 on how to mount brackets.

a-16 Next insert an outer track, if this is the last segment also insert the end cap. (See a-3 and a-14.)



a-17 Mark the placement of the last brackets and any other brackets. Make sure there is a 3" overlap. See a-7,a-8,a-9,a-10 on how to mount the brackets.



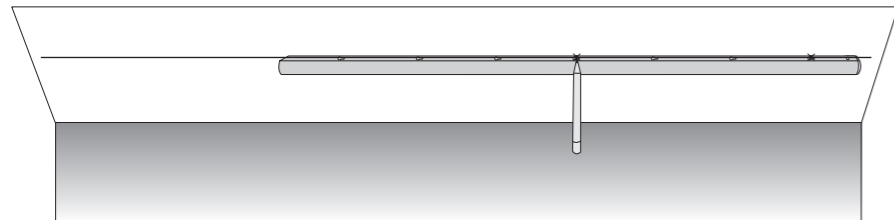
Step 1.b Ceiling Installation (for wall installation, see step 1.a)

For ceiling installations, finials cannot be used.

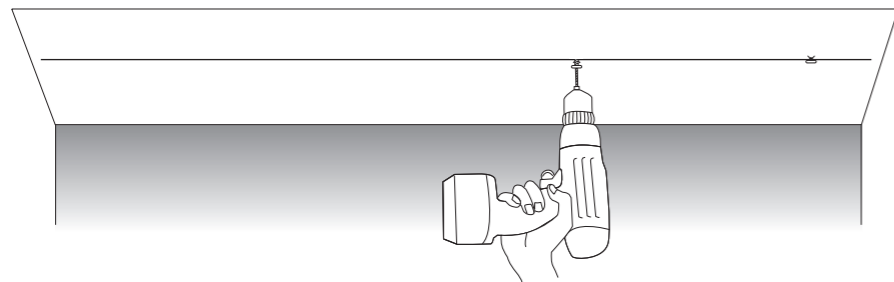
b-1 See a-1,a-2,a-3 but make the marks on the ceiling instead.

b-2 See Note 4 for required screw placements, spread out the placements of other screws evenly.

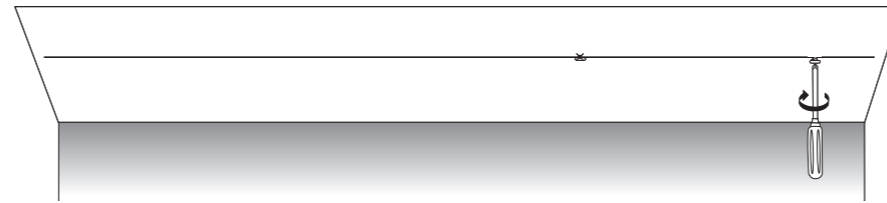
b-3 Mark the screw placements of your first outer track segment.



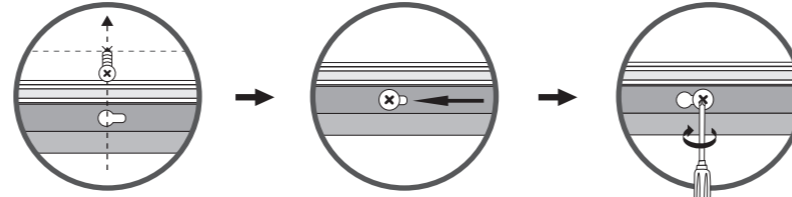
b-4 Drill the pilot hole and screw in the mounting screws.



b-5 Loosen the screws.



b-6 Mount the track through the keyholes, shift it into place, and lock it in place by tightening the screws.



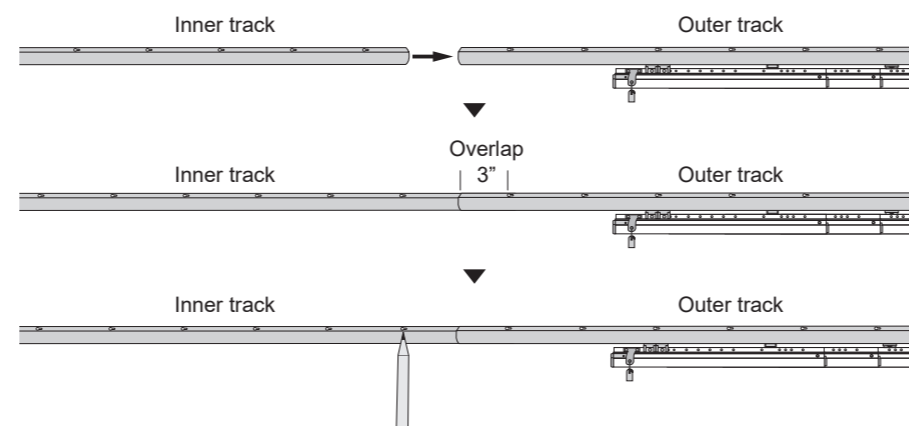
Mount the rod onto the screws

Shift the rod into place

Tighten the screws

b-7 After mounting the first segment of the track, insert the sliders. (See a-11,a-12,a-13)

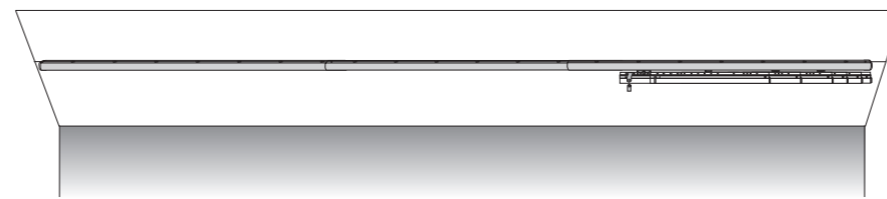
b-8 After inserting the sliders, insert an inner track. Make sure there is at least 3" overlap. Mark the placements of the next screw and make sure they are evenly spread out.



b-9 Mark the placement of the screws, drill the pilot holes and screw in the mounting screws see b-4,b-5,b-6.

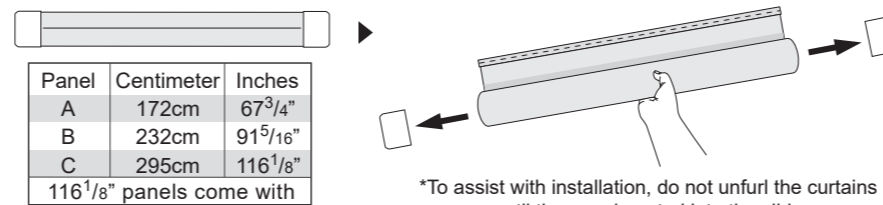
b-10 Next, Insert an outer track, if this is the last segment also insert the end cap. (See a-3 and b-8)

b-11 Mark the placement of the screws, see b-4,b-5,b-6, then mount the track.



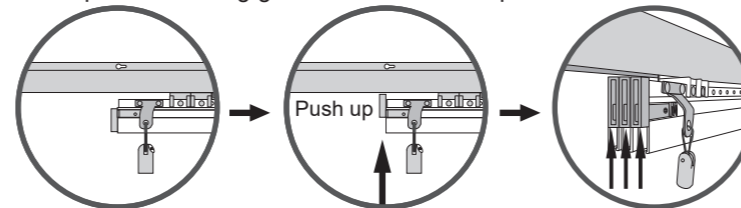
Step 2 Panel Curtain Installation (panel curtain sold separately)

2-1 Remove and discard the caps from the panel curtains.

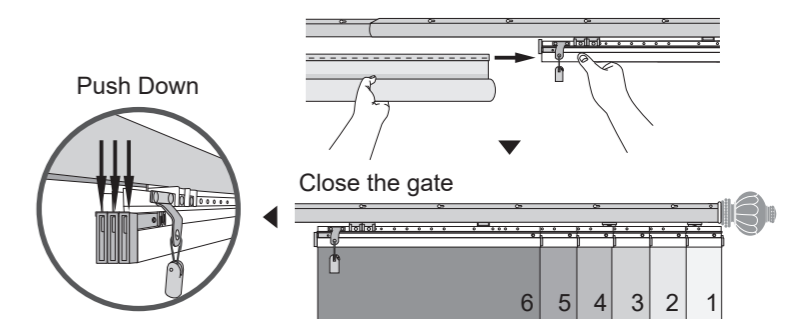


*To assist with installation, do not unfurl the curtains until they are inserted into the slider.

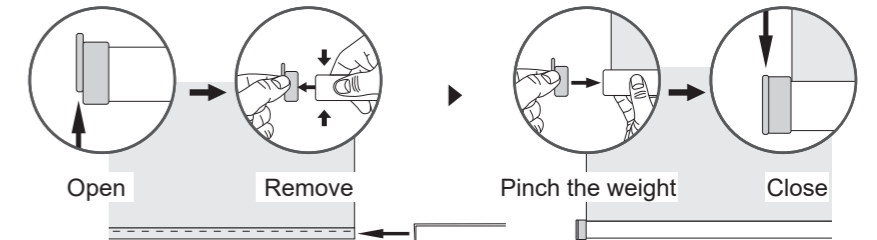
2-2 Push the panel retaining gates on the sliders up.



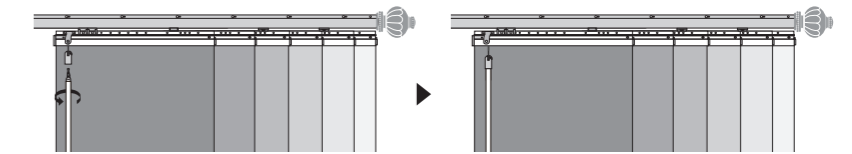
2-3 Insert the rubber liner part of panels curtain into the sliders in the order shown below, close the retaining gate, then furl the curtains.



2-4 Push the tab on the end cap up to unlock, remove the end cap, and insert the panel's rubber liner into the weight.

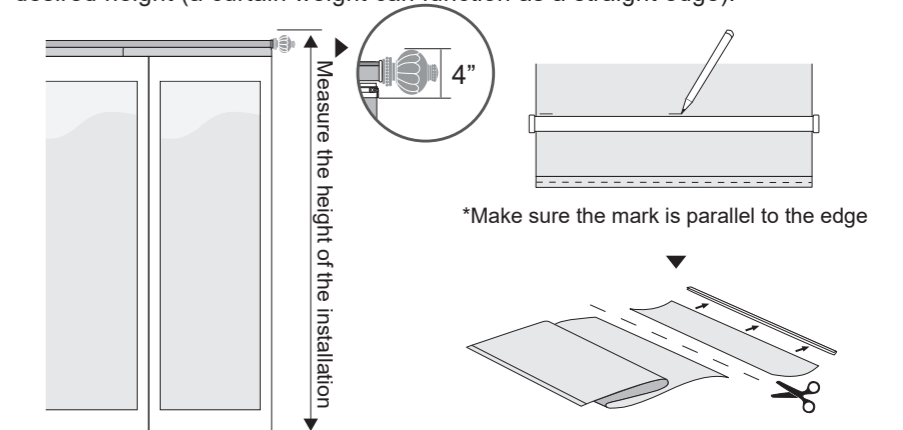


2-5 Extend the baton, insert the baton into baton cap and screw it into place.

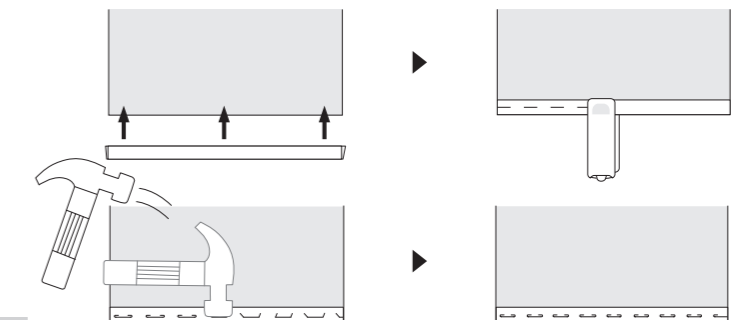


Step 3 Customizing the Panel Curtain

3-1 Measure the height of the installation. Measure and mark the panel curtain at the desired height (a curtain weight can function as a straight edge).



3-2 After cutting panel curtains to size with scissors or a utility knife, remove the rubber liners from the scraps. Staple the rubber liners onto panel curtains. Space the staple 2 inches apart and hammer the staples flat with a hammer.



Note Each rubber liner can be reused up to 3 times.

