



In the case of missing or damaged parts, do not return product to store . Please contact:

En cas de pièces manquantes ou endommagées, ne pas retourner le produit au magasin. Veuillez communiquer avec :

En caso de que falten piezas o alguna esté dañada, no devuelva el producto a la tienda. Por favor, contacte con:

USA

- * Technical Questions
- * Missing Parts
- * Assembly Questions

After Sales Service

Toll Free: (877) 627-8476

M-F 8-4:30 Central Time

E-mail: hobbyservice@poly-tex.com

For Sales And Other Questions

E-mail: customer.service@palram.com

Or Scan



www.palramapplications.com

CANADA

For All Customer Services Please Call:

Pour le service à la clientèle, veuillez composer le :
1-800-866-5749

Footprint Products Limited

Corporate Headquarters
1700 Courtneypark Dr. East, Unit 2
Mississauga, ON L5T 1W1
Canada

Phone / Téléphone : 905-564-6007

Fax / Télécopieur : 905-564-0059

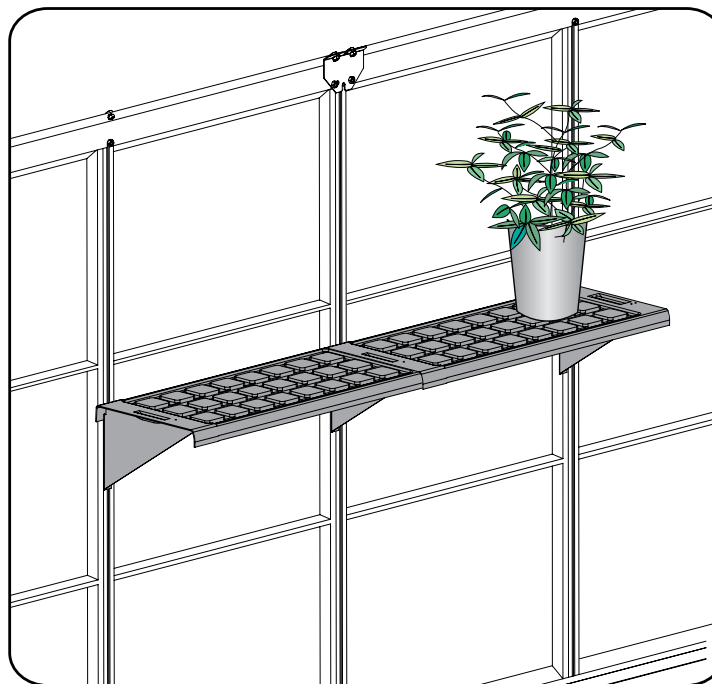
E-mail: Support@footprintproducts.com

Twin Shelf Kit™

Approx. Dim.

125L x 26W x 16.5H cm / 49.2"L x 10.2"W x 6.5"H

65L x 26W x 16.5H cm / 25.6"L x 10.2"W x 6.5"H



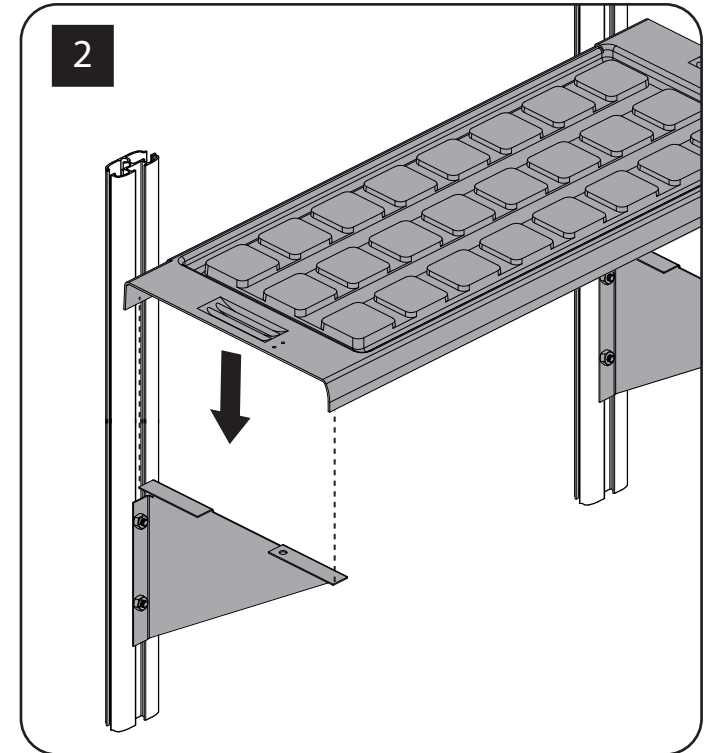
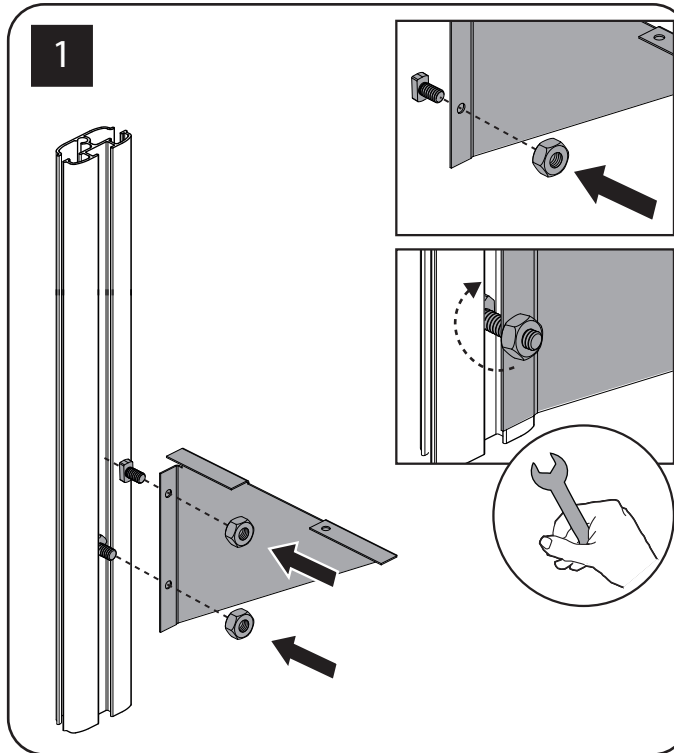


Twin Shelf Kit

Available to all Palram Greenhouses

After Sale Service
customer.service@palram.com

USA	877-627-8476
Canada	1 800-866-5749
England	01302-380775
Germany	0180-522-8778
France	0169-791-094
International	+972 4-848-6942



Contents

