

GENERAL®

DM8200/8205
DM8215/8230

USER'S MANUAL



DIGITAL MANOMETER

DM8200

DM8205

DM8215

DM8230

Thank you for purchasing this Digital Manometer. This instrument is a portable, battery operated pressure measuring device.

The Manometer is ideal for HVAC/R technicians measuring pressure level, medical equipment, computer peripherals and pneumatic controls.

INTRODUCTION

- ✓ The meter will display all LCD segments when it is first turned on for approx. 3 seconds. Though you might see DATALOGGER, Y/M/D, REL, AVG... these segments are not available for these meters.
- ✓ The LCD is divided into two distinct sections: One large (Primary) top screen and one smaller right - bottom bottom screens (Relative Clock). The 2 display areas keep you constantly updated with the pressure measurements.
- ✓ The Meter measures Gauge pressure - a measure of pressure in psi that is referenced to ambient pressure and Differential pressure - a measure of the difference two pressures.

- ✓ 11 pressure units are selectable for Imperial and Metric in different areas: bar, mmHg, ozin², kgcm², psi, inH₂O, kPa, ftH₂O, inHg, cmH₂O, mbar.

4 Manometer models for your choice:

Pressure range: 0~± 5 psi (DM8205)

" : 0~± 15 psi (DM8215)

" : 0~± 30 psi (DM8230)

" : 0~± 100 psi (DM8200)

- ✓ Please check the tubing is not leaking or damaged before using.

CONVERSION & RESOLUTION

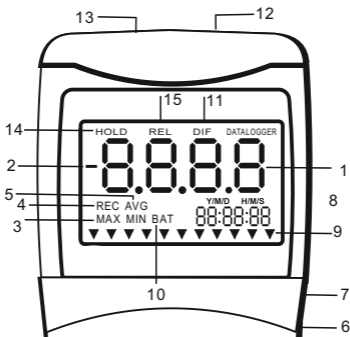
PSI	Resolution	Resolution			
		5	15	30	100
psi	1.000000	0.003	0.01	0.02	0.1
inch of H ₂ O	27.680517	0.1	0.3	0.5	2
bar	0.068948	0.001	0.001	0.002	0.004
mbar	68.948253	0.2	1	2	4
mm of Hg	51.712016	0.2	0.5	1	3
oz/inch ²	16.000844	0.05	0.2	0.3	1
kg/cm ²	0.070309	0.001	0.001	0.002	0.004
kPa	6.894859	0.02	0.1	0.2	0.4
ft of H ₂ O	2.306719	0.01	0.02	0.04	0.2
cm of H ₂ O	70.309000	0.2	1	2	4

Quick Conversion Sheet ±

model \ unit	psi	inH ₂ O	mbar	kg/cm ²
DM8205	5	138	345	0.35

DM8215	15	415	1034	1.05
DM8230	30	830	2068	2.10
DM8200	100	2768	6895	7.03

CONTROLS AND INDICATORS



1. Primary Data Screen displays pressure value.
2. "-" Minus pressure display.
3. **MAX MIN** pressure recorded.
4. **REC** starts recording mode and displays max./min. pressure recorded.
5. **AVG** Average records (N/A).
6. **DC** power in Jack.
7. **RS232** output port.
8. **H/M/S** 88:88:88 displays data for Hour / Minute / Second.
9. ▼ Pressure unit indication.
10. **BAT** Battery low indicator.
11. **DIF** Differential pressure mode.

12. "+" Positive pressure hose plug.
13. "-" Negative pressure hose plug.
14. **HOLD**. Freezes pressure reading.
15. **REL**. Establish a relative zero for the primary screen information. (N/A)



"-" Negative pressure

"+" Positive pressure

AUTO POWER OFF (SLEEP FUNCTION)

This instrument will automatically shut off in approx. 20 minutes for every power on.

For recording or operating over longer periods of time, you can disable the sleep mode by pressing **ⓘ** and **HOLD** simultaneously before power on.

An "n" will appear in the middle of the screen at which time you can release the **HOLD** button. (See Fig.A) The disable sleep mode will be invalid after powering off.

Fig. A →

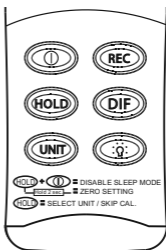


MODE OPTIONS

Delete and replace with programmable user selectable start-up mode.

The display will default to the mode last used.

For your convenience, the meter defaults to the setting used during the last operation. The following table lists the modes of operation that can be invoked by pressing the button indicated.



- ① Turns instrument on (Default setting) and off.
- REC Press momentarily and relative clock starts in the lower right screen.

REC is displayed in the middle left of (Fig. B) other button functions are locked out except **Power, Unit** and **Backlight**.

Press momentarily again and the unit cycles through **MAX** (Fig.C) and **MIN** (Fig.D) and back to current pressure ; the record mode is displayed on the LCD.

Press and hold REC for 3 seconds to turn off the record function and return to the normal mode.

Fig. B →

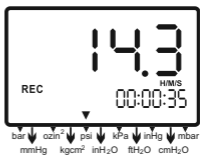


Fig. C →

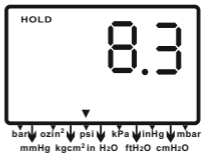


Fig. D →



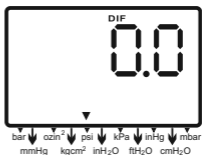
(HOLD) Press momentarily to freeze the pressure reading. (Fig.E)

Fig. E →



(DIF) Press momentarily, **DIF** appears on top of the LCD and the display indicates the relative zero (Relative zero causes the value of the display to show as "0.0") - only the amount of pressure change will be indicated. Press momentarily again and the unit returns to the normal mode of pressure differential (see Fig.F).

Fig. F →



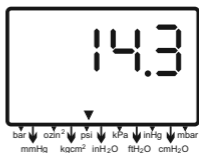
Differential Pressure : A measure of the difference between two pressures, i.e. use differential pressure sensor to measure gauge pressure by leaving one process connection open to atmosphere and connecting the second sensor port to your system.

UNIT Press momentarily and the unit will cycle through "bar" , "mmHg", "ozin²", "kgcm²" , "psi", "InH₂O", "kPa", "ftH₂O" , "inHg" , "cmH₂O" , "mbar" , which indicated on the bottom of the display (See Fig.G &H).

Fig. G →



Fig. H →



Lightbulb icon Press momentarily and the back-light illuminates for approx. 30 seconds then turns off automatically.

Or press momentarily to decrease the figure when calibration is being performed.

MAINTENANCE

- ✓ The meter is calibrated in-house before shipping.
- ✓ To maintain the meter in good condition, it is recommended to calibrate the meter after long time use.
- ✓ When properly maintained, the meter will maintain its accuracy specification. To ensure your meter is performing at its peak, send it to the factory or a qualified instrument calibration facility for annual calibration.
- ✓ It is recommended to always set to zero before taking a measurement. Refer to the zero setting procedure on page 12.

Cleaning:

Use a damp cloth and mild soap to clean the case of the Manometer, do not use harsh detergents or abrasives as these may mark the surface or damage the unit's case with an adverse chemical reaction.

CALIBRATION MODE

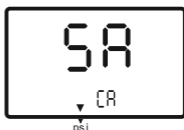
Calibration mode is only applicable for a standard Manometer calibrator or any qualified meter calibration facility for annual calibration.

1. First , please manually set the display to zero (no pressure applied to the connector), refer to the Manual zero procedure.
2. Turn the meter off.
3. Press **REC** & **①** simultaneously, "**CA**" appears on the display, (See Fig.I) the meter enters to the calibration mode, make sure the pressure unit to be pointed under the arrow mark "▼" is "**psi**" to start positive (+) pressure calibration



4. For the DM8200, the meter has an 80 psi calibration point by default. The adjustable pressure range is from 78.0 to 82.0. If calibration pressure source is not 80 psi, increase the figure by pressing **REL** key , or decrease the figure by pressing **⓪** key to set calibration point as required.
5. Save the calibration point by pressing **REC** key, "**SA**" and small "**CA**" appears on the display (See Fig.J) in 2 seconds , the meter auto-skip to the negative pressure (-) point for next calibration mode.

Fig. J →



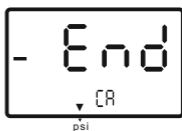
6. Follow the same procedure as step 4 for the negative pressure calibration point by pressing **UNIT** key, the LCD now displays "-80.0" and small "CA" (See Fig.K), do the necessary calibration figure refer to your pressure standard if needed.

Fig. K →



7. Again save the calibration point by pressing **REC** key, "SA" and "CA" appears in 2 seconds and then "End" and "CA" appears in another 2 seconds, the meter turns back to the normal mode (See Fig.L).

Fig. L →



If you can't save by pressing the **REC** key, i.e. no "SA" appeared, please check: (a) The calibration pressure source is between 75.0 and 85.0, or check (b) if you enter the correct positive pressure(+) or negative pressure (-).

If you want to skip positive (+) calibration when entered into the Calibration mode, press **UNIT** to skip to negative (-) calibration point.

Again, the above calibration is an example for model DM8200, i.e. the pressure range is from 0 to +100 psi (Positive pressure) or from 0 to -100 psi (Negative pressure).

Calibration point reference:

Model:	psi range	Calibration point(±)	Reommend (±)
DM8205	0~± 5	4.000	3.900~4.100
DM8215	0~± 15	12.00	11.70 ~12.30
DM8230	0~± 30	24.00	23.40~24.60
DM8200	0~±100	80.00	78.00~82.00

MANUAL ZERO SETTING

When you set the display to zero (no pressure applied to the connector), press **HOLD** button for 2 seconds, now the meter displays "0 .0.0.0" from right to left (See Fig.M), and then each "0" disappears from left back to right, the LCD display shows a normal mode (See Fig.N).

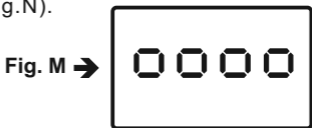
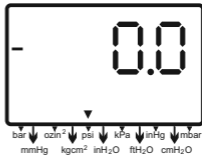


Fig. N →



TROUBLESHOOTING

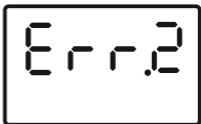
- **Power on but no display.** Check that the battery is in place and making good contact with correct polarity, replace with a new battery or attach optional AC adaptor if weak battery is identified as the cause.
- **BAT indication.** Replace with a new battery when LCD display **BAT** at the middle bottom.
- **No Display.** Make sure battery is not dead. If the display disappears, check if sleep mode is active. Refer to the Disable sleep mode function for a longer time than 20 minutes use. Or check that the tubing is connected to the meter tightly.
- **Err.1.** If the pressure value exceeds the maximum range, "Err.1" will appear on the display (See Fig.O), please change the sensor, otherwise the sensor will become damaged for making the overrange measurement.

Fig. O →



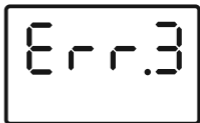
- **Err.2.** If the measurement pressure is less than minimum range "Err. 2" will appear (See Fig.P), it is recommended to change the sensor (meter).

Fig. P →



- **Err.3.** For operating the DIF function, the differential pressure value is larger than maximum display digit, **Err.3** appears on the display (See Fig.Q).

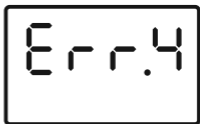
Fig. Q →



- **Err.4.** When you set zero, make sure that you have disconnected the tubing, no pressure applied to the connector. Then if you see **Err.4** appear on the display, it means the sensor or meter is damaged (See Fig.R). Return the unit to the store you purchased it from for repair.

P.S. Err.4 will be also appear while the tube or hose is connected during setting the zero mode.

Fig. R →



- **E1OL or E2UL**. When you see the errors while operating RS232 software, it means that the pressure source is less than or over the range of the instrument.

REPLACING THE BATTERY

Replace your “9V” battery when:

- ✓ The **BAT** icon appears on the right of the screen.
- ✓ The meter will not power on.
- ✓ Use of the backlight causes the **BAT** icon to appear.

Even if the battery was recently replaced, check it's voltage level if you get no response from your instrument.

To replace the battery:

1. Remove the tubing from the instrument.
2. Lay the instrument face-down on a clean, flat surface.
3. Remove the battery by screwdriver and observe indicated polarity. Close the cover after replacing with a new battery.



Remove battery from instruments that you do not plan to use for a month or more. Do not leave the battery in the instrument.

OPERATING CONDITIONS

- ✓ Compensated temperature range: 32° to 122°F (0° to 50°C)
- ✓ Operating temperature: 32° to 122°F (0° to 50°C)
- ✓ Storage temperature range: -4° to 140°F (-20° to 60°C)
- ✓ Operating Humidity: Max. 80%RH
- ✓ Power: One "9V" battery
- ✓ Exceeding Maximum pressure will cause permanent damage to sensor.

Model	Max. Pressure
DM8205	20 psi
DM8215	30 psi
DM8230	60 psi
DM8200	150 psi

SPECIFICATIONS

	Pressure
Range	0~±(5 or 15 or 30 or 100 psi)
Resolution	See Page 8 data sheet
Accuracy	± 0.3% of full scale at ±25°C
Dimensions	7.2" x 2.8" x 1.2" 182 x 72 x 30mm
Unit Weight	Approx. 7.8oz (220g) with battery)
Response time	0.5 seconds
Format	Baud Rate: 2400 bit/sec Data Bit: 8, Stop Bit: 1 P XXXXX, P - XXXXX (unit)

The meter Pressure measurement instruments are not suitable for absolute pressure measurement.

The meter instruments are fitted with two 4.8mm lugs. Before you connect the instruments to a pressure source, check security of all fittings carefully.

MATERIALS SUPPLIED

This package contains:

- ✓ The meter
- ✓ Battery ("9V")
- ✓ Operation manual
- ✓ Hard carrying case
- ✓ Connection hose: 0.16" (4mm (ID)) x 0.24" (6mm (OD)) x 39.37" (1000mm length) x 2 pcs

OPTIONAL ACCESSORIES

- ✓ RS232 software disk or CD with D-sub connector
- ✓ DC Adaptor

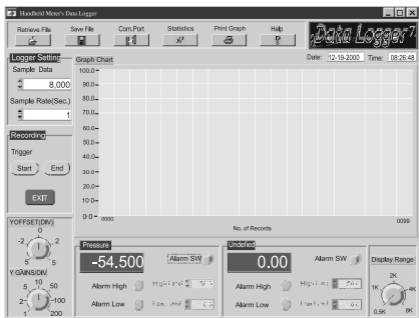
RS232 OUTPUT

The meter can link with a personal computer to capture on-line data. It can display pressure records with real-time output. You can retrieve files and save the data for operating data analysis, records statistics, multi-files display on the screen,... versatile functions of your choice.

Connection procedures:

1. Plug the optional accessory RS232 cable into the DC jack port (on the right side of the meter).

2. Insert the D-sub 9P type connector into computer's Com.1 or 2 port or...
3. Start to set up RS232 software by inserting the CD-ROM or Floppy diskette.
4. When installing the RS232 software, please follow the operation manual procedure in the software package.



WARRANTY

This meter is warranted to be free from defects in material and workmanship for a period of one year from the date of purchase. This warranty covers normal operation and does not cover battery, misuse, abuse, alteration, tampering, neglect, improper maintenance, or damage resulting from leaking batteries. Proof of purchase is required for warranty repairs. Warranty is void if the meter has been opened.

RETURN AUTHORIZATION

Authorization must be obtained from the supplier before returning items for any reason.

When requesting a Return Authorization (RA), please include data regarding the defective reason.

The meter is to be returned along with good packing to prevent any damage in shipment and insured against possible damage or loss.



Specialty Tools & Instruments™

GENERAL TOOLS & INSTRUMENTS™

80 White Street New York, NY 10013-3567

PHONE (212) 431-6100 • FAX (212) 431-6499 • TOLL FREE (800) 697-8665

e-mail: sales@generaltools.com • www.generaltools.com

DM8252/DM8252RS User's Manual
Specifications subject to change without notice
©2009 GENERAL TOOLS & INSTRUMENTS™

NOTICE - WE ARE NOT RESPONSIBLE
FOR TYPOGRAPHICAL ERRORS.
MAN#DM8252/DM8252RS 08/09