

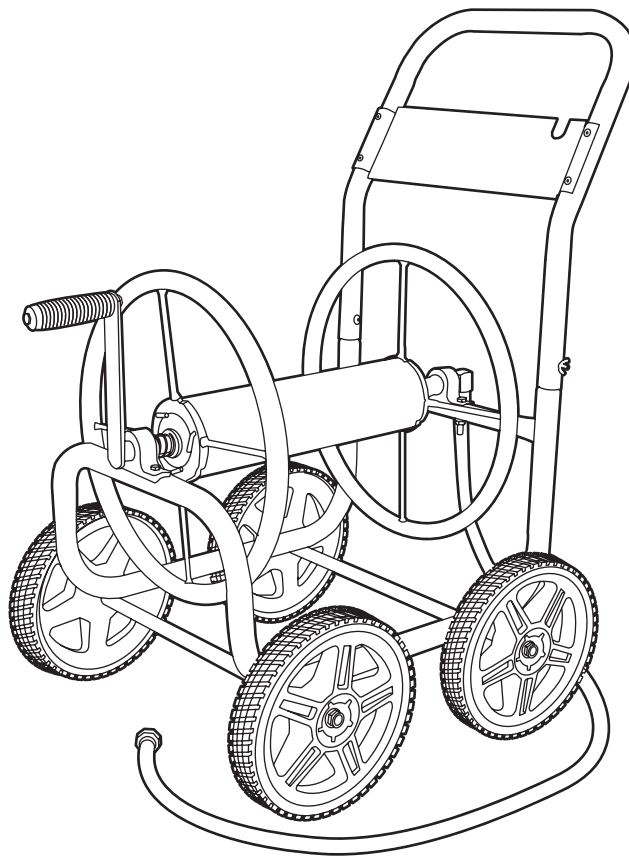


Item #541 632  
Model #840-H

## USE AND CARE GUIDE

---

### FOUR-WHEEL HOSE CART



Questions, problems, missing parts? Before returning to the store,  
call Hampton Bay Customer Service  
8 a.m. – 7 p.m., EST, Monday – Friday, 9 a.m. – 6 p.m., EST, Saturday

**1-855-HD-HAMPTON**

**HAMPTONBAY.COM**

---

#### **THANK YOU**

*We appreciate the trust and confidence you have placed in Hampton Bay through the purchase of this hose cart. We strive to continually create quality products designed to enhance your home. Visit us online to see our full line of products available for your home improvement needs.  
Thank you for choosing Hampton Bay!*

# Table of Contents


Safety Information ..... 2  
Limited Warranty ..... 2  
Pre-Assembly ..... 4  
    Planning Assembly ..... 4  
    Tools Required ..... 4  
    Hardware Included ..... 4  
    Package Contents ..... 5

Assembly ..... 6  
Maintenance ..... 8  
Care and Cleaning ..... 9  
Troubleshooting ..... 9


# Safety Information

Read and understand all instructions before you assemble.

- Do not expose the hose reel to freezing temperatures with water remaining in the hose reel plumbing system.

 **WARNING:** This product contains one or more chemicals known to the state of California to cause cancer and birth defects or other reproductive harm. Wash hands after handling.

 **CAUTION:** Do not consume water from the garden hose. It is not fit for human consumption.

 **CAUTION:** DO NOT leave water running though the reel while not in-use or unsupervised.

# Limited Warranty

## LIMITED WARRANTY ON PRODUCTS

Company warrants solely to the original Customer that (a) the Structural Frame will be free from defects in materials and workmanship under normal use for a period of three (3) YEAR(S) from the date of original retail purchase, and (b) the Non-Frame Parts (which consist of the crank handle, swivel and water connections, leader hose and tires), will be free from defects in materials and workmanship under normal use for a period of ONE (1) YEAR from the date of original retail purchase. Notwithstanding the foregoing, the colors and finishes of the Products may vary within a reasonable scope due to unavoidable color variations in different production batches, and such variations shall not constitute a material defect. This limited warranty is limited solely to the original Customer with proof of purchase and is not transferable.

## THE WARRANTY

During a covered Product’s limited warranty period, Company will, at Company’s sole option and discretion, (1) repair the defective component or product without charge or (2) replace the defective component or product without charge.

The foregoing limited warranty is subject to the Customer’s proper storage, transportation, handling and use of the Products as the same are defined within Company’s then-current published guides and instructions for use and care. The limited warranty does not include defects due to normal wear and tear, abuse or misuse, mishandling, neglect, accident, fire, lightning, sunlight or other natural hazard, delivery or transportation damage, failure to follow applicable directions or instructions, or improper or inadequate cleaning, maintenance, care, repairs, modifications, or use beyond a Product’s intended use. Please note that since the Structural Frame is made from steel, rust may occur over time. As such, this limited warranty does not include rust or defects due to the same.

## Limited Warranty (continued)

### LIMITED WARRANTY CLAIMS PROCEDURE

Company shall review each such claim and issue Customer a return merchandise authorization (“RMA”) in the event that the described defect or condition merits warranty review as determined by Company. Customers who have been issued a RMA shall, at Company’s election, return the covered item to the same physical address listed above for reporting initial claims. Company shall not accept any returned product without a RMA.

Upon receipt, Company will evaluate the returned product(s) to determine if there is a warranty claim and, if so, how Company wishes to remedy the same. During a covered product’s respective limited warranty period, Company will, at Company’s sole and absolute option and discretion:

- (1) repair the defective component or product without charge or
  - (2) replace the defective component or product without charge.
- Refunds are not available pursuant to this limited warranty.

Customer is solely responsible for transportation of the covered product(s) to the Company for evaluation (if applicable and requested by Company). In the event that Company determines that a claim under this limited warranty is justified, Company shall be responsible for transportation of the repaired, corrected, replaced or exchanged product back to Customer. Customer shall be solely responsible for the transportation of any product back to Customer if Company determines that a claim under this warranty is not justified.

Any repaired, corrected, replaced or exchanged Products shall be subject to the Limited Warranty set forth to the duration of the original limited warranty period as set forth in Section LIMITED WARRANTY ON PRODUCTS and not for any extended duration, following their repair, correction, replacement or exchange.

IF A COMPANY PRODUCT DOES NOT CONFORM TO THESE LIMITED WARRANTIES, THE PURCHASER’S SOLE AND EXCLUSIVE REMEDY IS, AT COMPANY’S SOLE AND EXCLUSIVE OPTION, THE (1) REPAIR OF ANY DEFECTIVE PRODUCT OR COMPONENT PART OR (2) REPLACEMENT OF ANY DEFECTIVE PRODUCT OR COMPONENT PART. THE LIMITED WARRANTY AND REMEDIES SET FORTH ABOVE ARE EXCLUSIVE AND MADE IN LIEU OF ALL OTHER WARRANTIES, REMEDIES, RIGHTS OR CONDITIONS, WHETHER ORAL OR WRITTEN, EXPRESS OR IMPLIED, EITHER IN FACT OR BY OPERATION OF LAW, STATUTORY OR OTHERWISE, INCLUDING THE IMPLIED WARRANTIES OF MERCHANTABILITY AND FITNESS FOR A PARTICULAR PURPOSE. COMPANY SPECIFICALLY DISCLAIMS, WITHOUT LIMITATION, ANY AND ALL OTHER WARRANTIES, EXPRESS OR IMPLIED, OF ANY KIND. IF COMPANY CANNOT LAWFULLY DISCLAIM IMPLIED WARRANTIES UNDER THIS LIMITED WARRANTY, ALL SUCH WARRANTIES, INCLUDING THE IMPLIED WARRANTIES OF MERCHANTABILITY AND FITNESS FOR A PARTICULAR PURPOSE, ARE LIMITED IN DURATION TO THE DURATION OF THIS LIMITED WARRANTY. The Company does not assume or authorize any person to assume for them any other liability in connection with the Products.

### EXCLUSION AND LIMITATION OF LIABILITY

IN NO EVENT, WHETHER BASED ON CONTRACT OR TORT OR OTHER LEGAL THEORY, SHALL COMPANY BE LIABLE FOR ANY INDIRECT, INCIDENTAL, PUNITIVE, SPECIAL OR CONSEQUENTIAL DAMAGES, INCLUDING BUT NOT LIMITED TO, DAMAGES TO OTHER PROPERTY, INCONVENIENCE, DAMAGES FOR LOSS OF PROFITS, REVENUE, GOODWILL OR USE, INCURRED BY CUSTOMER OR ANY THIRD PARTY, WHETHER IN AN ACTION IN CONTRACT, TORT, STRICT LIABILITY, OR IMPOSED BY STATUTE, OR OTHERWISE, EVEN IF ADVISED OF THE POSSIBILITY OF SUCH DAMAGES. Some states do not allow the exclusion or limitation of incidental or consequential damages or exclusions or limitations on the duration of implied warranties or conditions, so the above limitations or exclusions may not apply to Customer. In jurisdictions that limit the scope of or preclude limitations or exclusion of remedies or damages, or of liability, such as liability for gross negligence or willful misconduct or do not allow implied warranties to be excluded, the limitation or exclusion of warranties, remedies, damages or liability set forth above are intended to apply to the maximum extent permitted by applicable law. This limited warranty gives the Customer specific legal rights, and the Customer may also have other rights that vary by state, country or other jurisdiction.

### SEVERABILITY

If any provision of this limited warranty is held to be illegal, invalid or otherwise unenforceable, such provision will be enforced to the extent possible consistent with its stated intention, or, if incapable of such enforcement, will be deemed to be severed and deleted from this limited warranty, while the remainder of the terms of this limited warranty will continue in full force and effect.

### DISPUTE RESOLUTION

This Limited Warranty shall be governed by and construed in accordance with the laws of the State of North Carolina, without regard to its principles of conflicts of law. The parties acknowledge the exclusive jurisdiction of the federal and state courts of the State of North Carolina. Any claims or disputes under this Limited Warranty shall be heard exclusively in any state or federal courts sitting in Guilford County, North Carolina, and both parties expressly consent to the personal jurisdiction and venue of the North Carolina state and federal courts for such actions.

# Pre-Assembly

## PLANNING ASSEMBLY

Lay out all parts and compare to the Hardware Included and Package Contents lists. If any part appears missing or damaged, do not assemble this product and contact customer service.

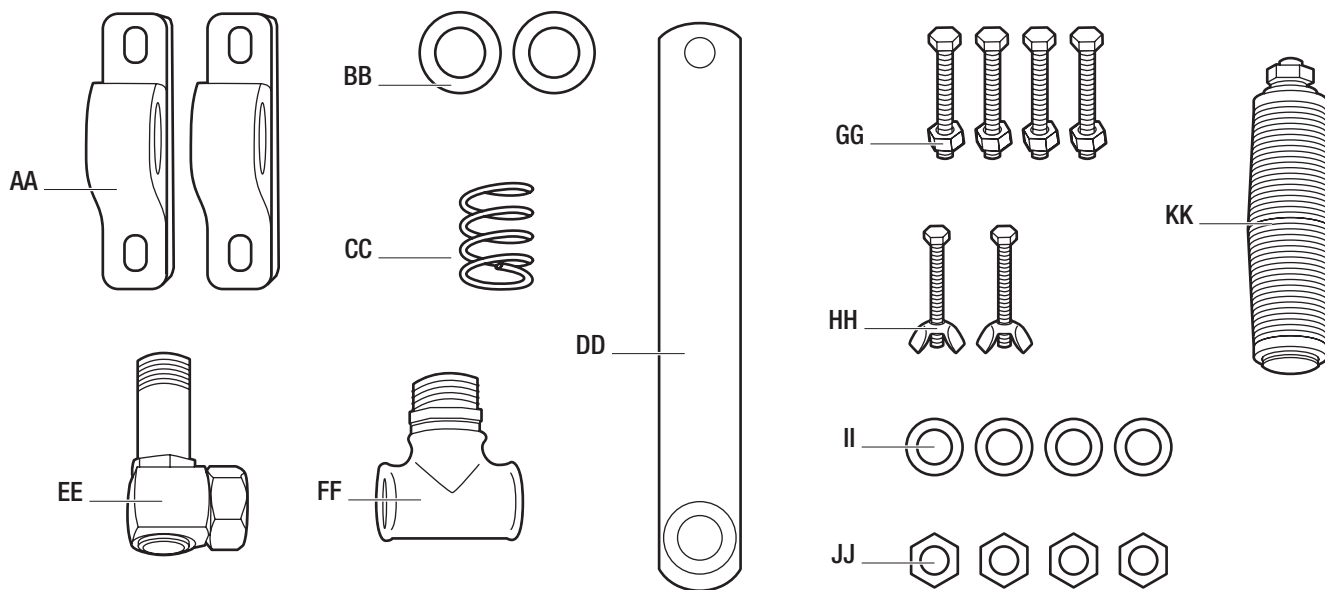
## TOOLS REQUIRED



Adjustable wrench x 2

## HARDWARE INCLUDED

 **NOTE:** Some hardware comes pre-assembled.

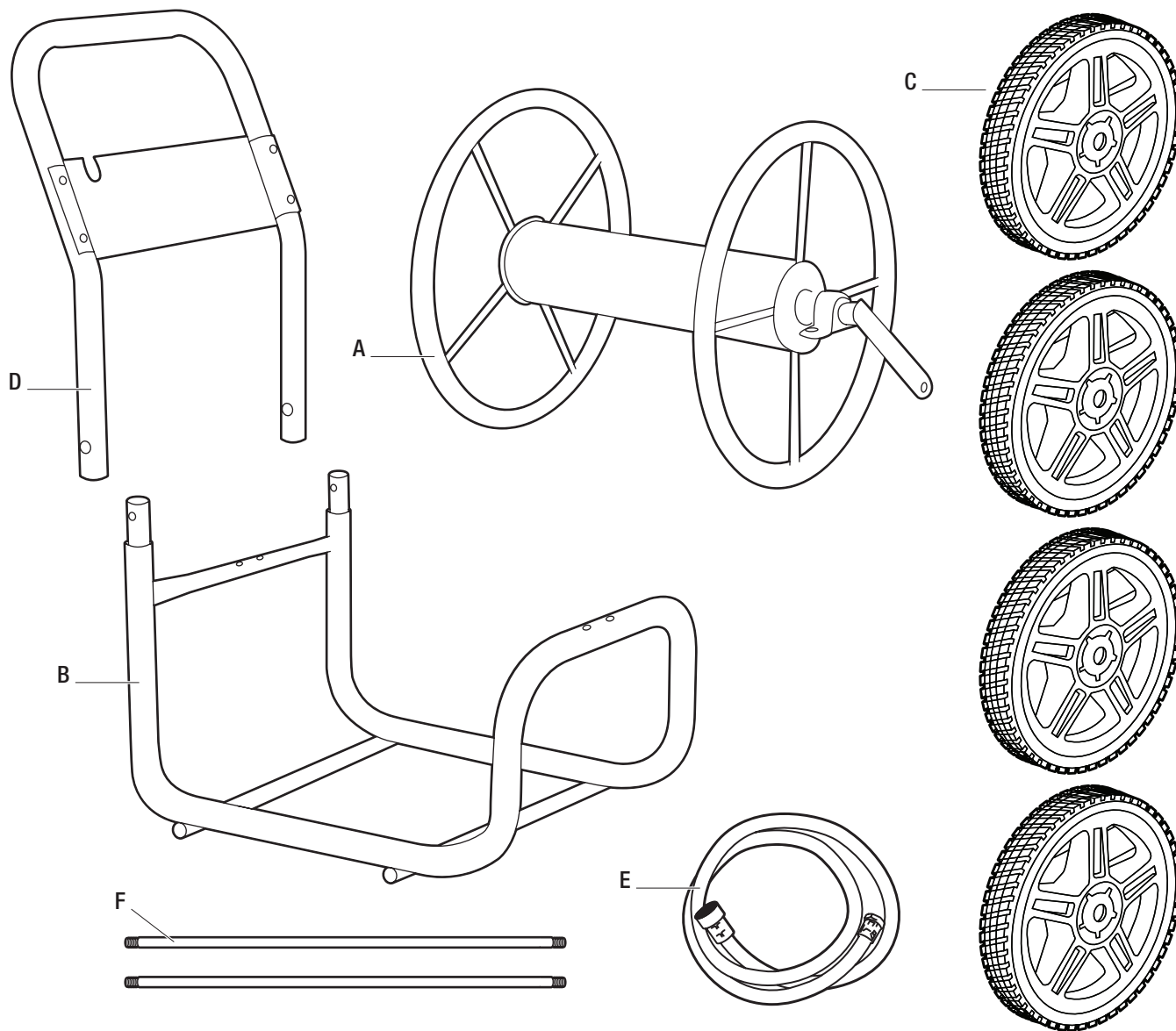


Part	Description	Quantity
AA	Sleeve	2
BB	Space washer	2
CC	Spring	1
DD	Crank handle	1
EE	Brass swivel	1
FF	Galvanized tee	1

Part	Description	Quantity
GG	1.75 bolts with lock nuts	4
HH	1.57 bolts with wing nuts	2
II	Axle washer	4
JJ	Axle nut	4
KK	Rubber handle with bolt	1

# Pre-Assembly (continued)

## PACKAGE CONTENTS

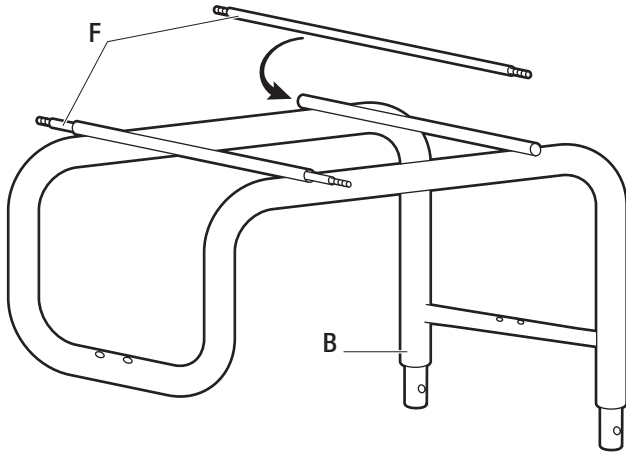


Part	Description	Quantity
A	Spool	1
B	Frame	1
C	Tire	4
D	U-handle	1
E	Leader hose	1
F	Axle rod	2

# Assembly

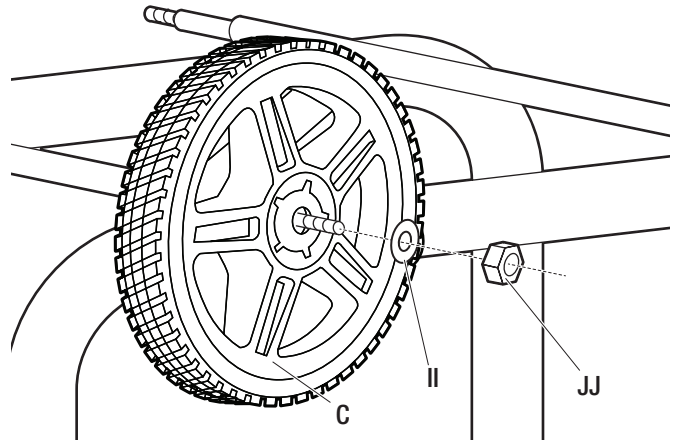
## 1 Assembling the frame

- Turn the frame (B) on its back. Insert an axle rod (F) through the axle bushing on the frame (B). Repeat for the second axle rod (F).



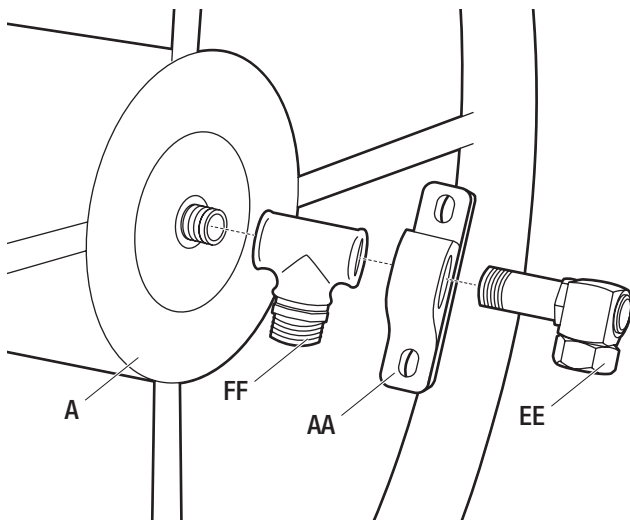
## 2 Attaching the tires

- Place a tire (C) over the axle. Place the axle washer (II) over the thread, screw on the axle nut (JJ) and tighten securely. Repeat for each remaining tire.
- Set the assembly upright on the tires.



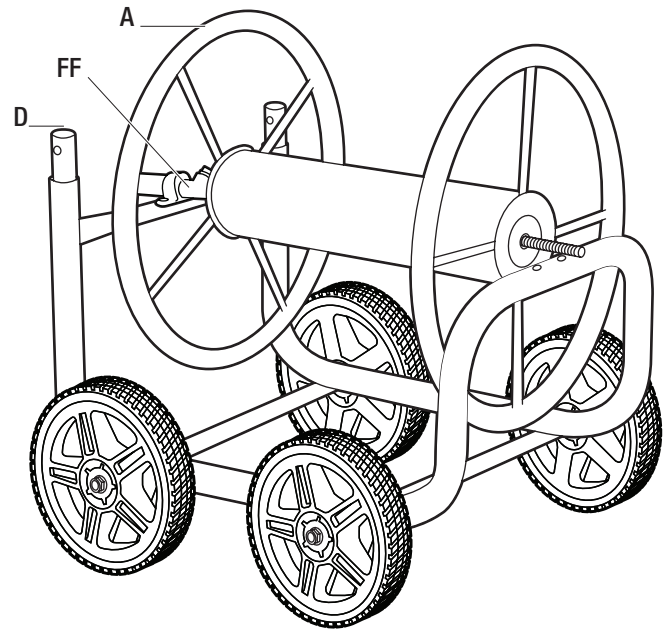
## 3 Assembling the galvanized tee

- Insert the brass swivel (EE) through the sleeve (AA) and screw the end of the swivel into the galvanized tee (FF). Using a wrench, tighten the swivel (EE) into the galvanized tee (FF). Tighten securely but do not overtighten. Over tightening the swivel could cause leakage.
- Screw the galvanized tee (FF) assembly onto the spool end (A) and tighten with a wrench.



## 4 Positioning the spool on the frame

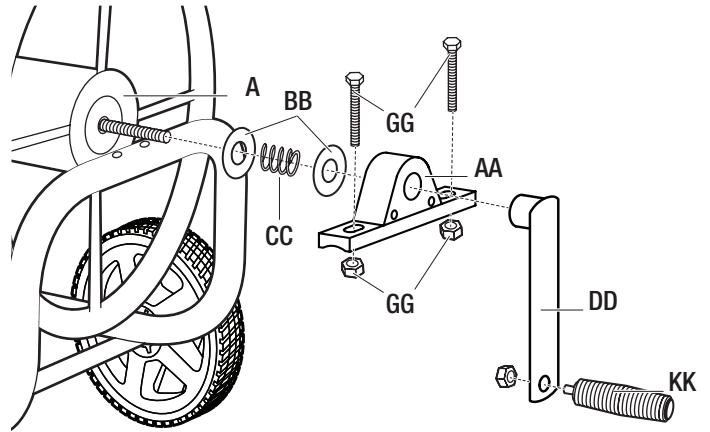
- Position the spool (A) on the frame so that the galvanized tee assembly (FF) is on the side of the assembly intended for the U-handle (D).



## Assembly (continued)

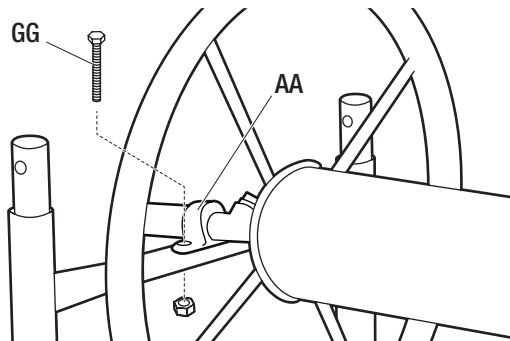
### 5 Attaching the spool and handle

- On the side of the spool opposite from the tee assembly, slide a plastic spacer washer (BB), spring (CC), and another plastic spacer washer (BB) over the end of the spool (A).
- Attach the spool (A) to the cart assembly using a sleeve (AA) and two 1.75 bolts with nuts (GG).
- Thread the crank handle (DD) onto the end of the spool pipe.
- Attach the rubber handle (KK) to the crank handle (DD) using the handle nut attached to the handle (KK). Tighten securely.



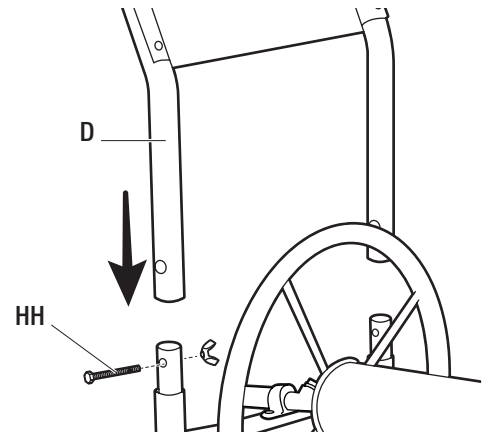
### 6 Attaching the spool to the water supply side

- Turn the spool around. Attach the second sleeve (AA) on the water supply side using the 1.75 in. bolts and lock nuts (GG). Make sure the sleeves are oriented over the holes on the frame. You may have to compress the spring to get the spool oriented properly.



### 7 Attaching the U-handle

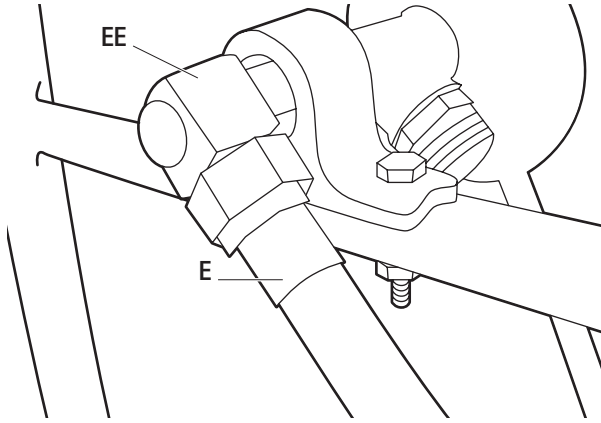
- Slide the U-handle (D) over the frame extensions and align the holes. Insert 1.57 in. bolts (HH) through the handle holes and attach with wing nuts.



## Assembly (continued)

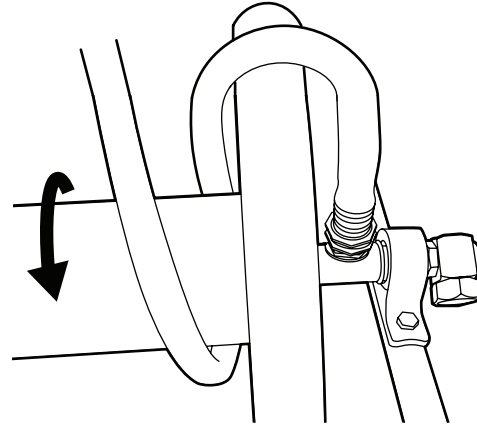
### 8 Attaching the leader hose

- Attach the leader hose (E) to the end of the swivel (EE). **DO NOT OVERTIGHTEN.**



### 9 Attaching your garden hose

- This cart is designed to hold up to 250 ft. of 5/8 in. garden hose. Attach your hose to the brass adapter (on the galvanized tee). Loop the hose over the spool end (as shown) to avoid kinking.



## Maintenance

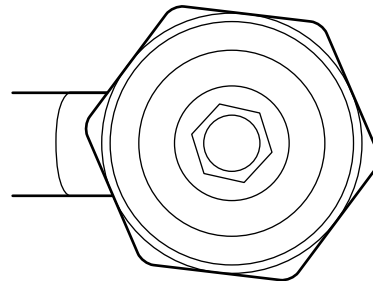
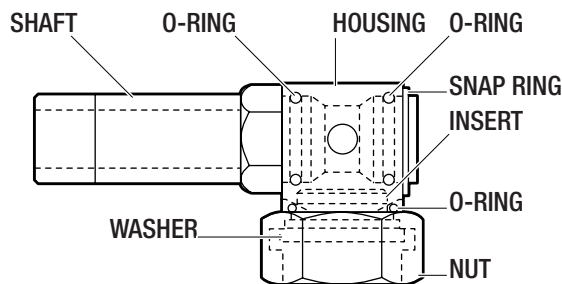
### ROUTINE MAINTENANCE

- To help delay rust, check for any scratches on your hose cart. Apply clear acrylic/weatherproof paint to avoid rusting.
- Drain water before storing.
- **DO NOT** leave water running through the reel while not in use or unsupervised.
- Turn off water after each use.

### FIXING A LEAKING SWIVEL

It is normal for the swivel to leak slightly until the O-rings are wet and have seated. If the leaking continues, you do not need to take the cart back to the store. This is a simple problem and is easily fixed by a simple procedure:

1. If the leader hose is attached to the swivel, unscrew the hose and look inside the swivel.
2. Using either a hex key or a large screw driver, insert the tool into the hex opening and gently tighten the threaded insert to stop the leaking. **DO NOT OVER TIGHTEN!**
3. If the unit still leaks, check that the hose washer is inside the nut. You may contact customer service for a new hose washer or obtain one at any hardware store.
4. If your swivel is old, the O-rings may be worn. Contact customer service for a new set of O-rings.
5. If these steps do not solve your leaking problem, then contact customer service at 1-855-HD-HAMPTON.





## Care and Cleaning

### RUST

Your hose reel will give you many seasons of reliable and functional hose storage. As with any steel product, there is always the chance for rust developing over time. Your hose reel's finish is designed for industrial applications, but even the toughest of coatings can be compromised by scratches. Such minor surface damage can occur in shipping despite our best efforts. We have found that most scratches occur during assembly and/or installation. If the base metal is exposed to the elements long enough, rust will develop. We recommend that you periodically inspect your reel for any surface damage.

Scratches can easily be repaired by using standard automotive touch-up body paint. At the end of each season, clean and then paint the unit with a clear acrylic paint.

Two other sources of rust acceleration is exposing the reel to yard fertilizers or leaving your hose reel standing in grass. Rinse off your hose reel after it comes in contact with freshly fertilized grass. Also, try to park your hose reel on solid ground. Leaving it standing on top of vegetation promotes condensation on the undercarriage of the unit.

### LEAKS

Your hose reel is manufactured with the finest quality components available. All components are manufactured to rigorous quality standards not common in other consumer grade hose reels available today. When you install your hose reel, be sure the hose washers are in place and all fittings are secure. **DO NOT OVER TIGHTEN** as you might damage the components. If you live in more temperate climates, drain the unit of any residual water before storing. **DO NOT EXPOSE THE UNIT TO FREEZING TEMPERATURES** while water remains in the plumbing system.

## Troubleshooting

Problem	Solution
The swivel head is not rotating, causing the leader hose to kink.	Remove the leader hose and turn the square head of the swivel several times. Apply lubricant.
Fixtures such as the galvanized tee, brass coupling, and swivel are leaking.	Apply Teflon/Plumber's tape and/or make sure the fixtures are tightened.



Questions, problems, missing parts? Before returning to the store,  
call Hampton Bay Customer Service  
8 a.m. – 7 p.m., EST, Monday – Friday, 9 a.m. – 6 p.m., EST, Saturday

**1-855-HD-HAMPTON**

**HAMPTONBAY.COM**

Retain this manual for future use.